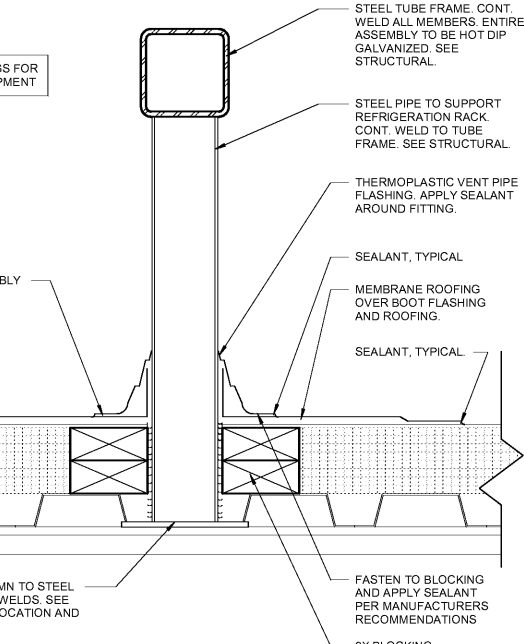
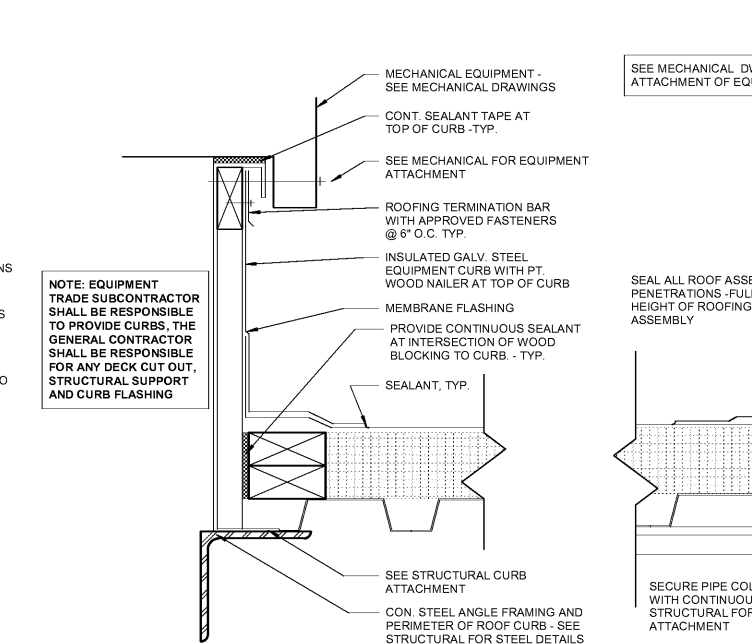
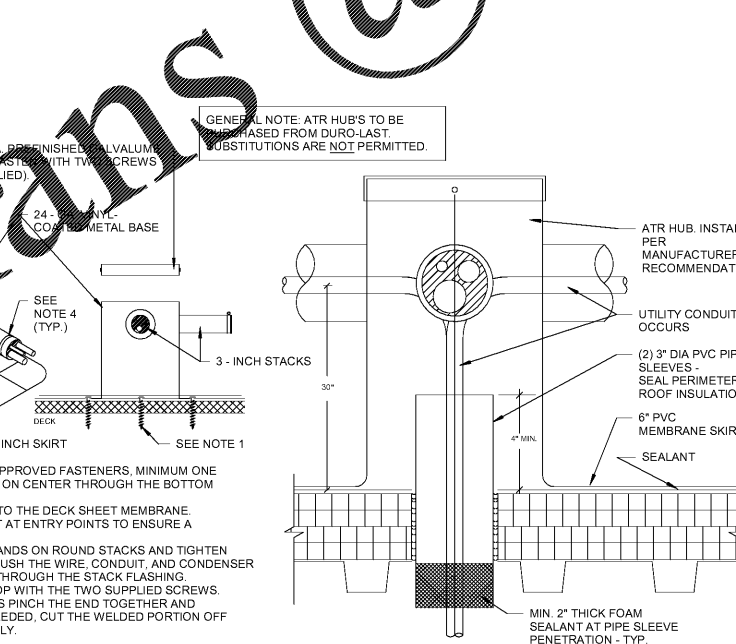
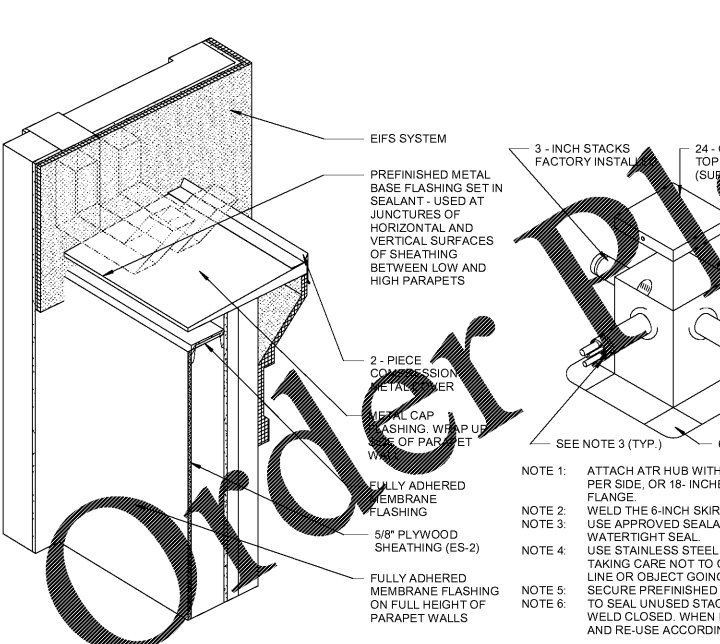
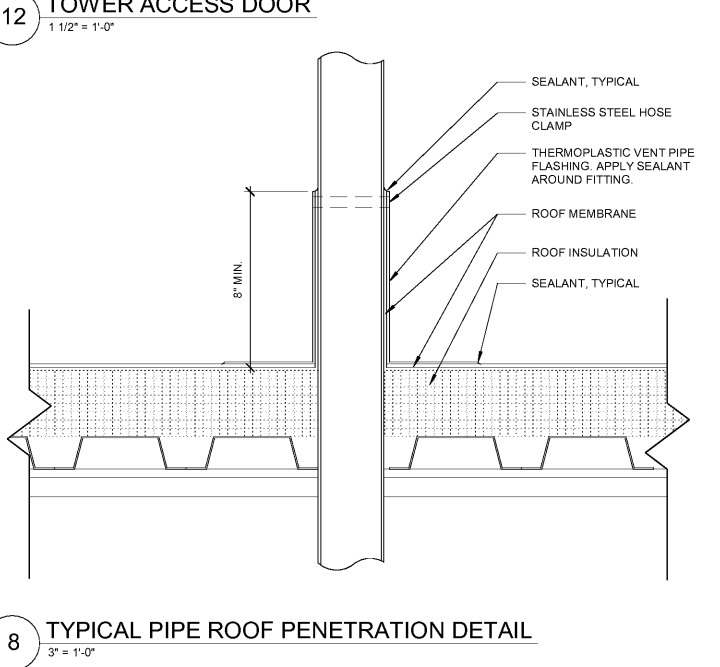
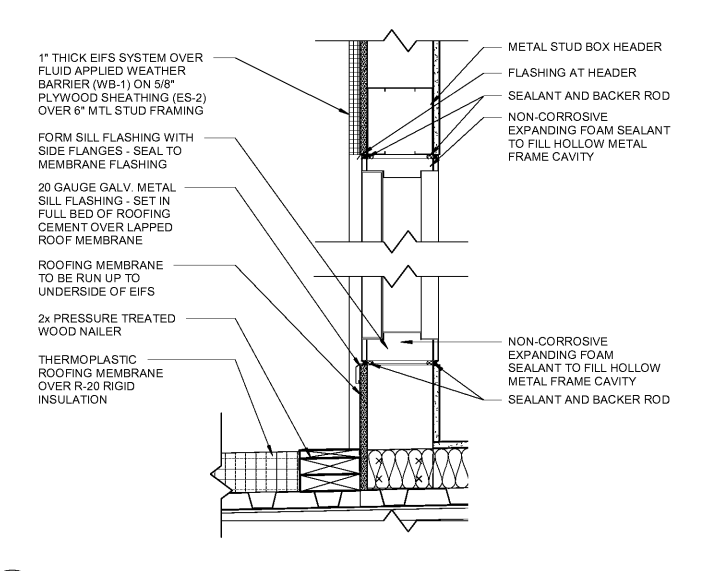
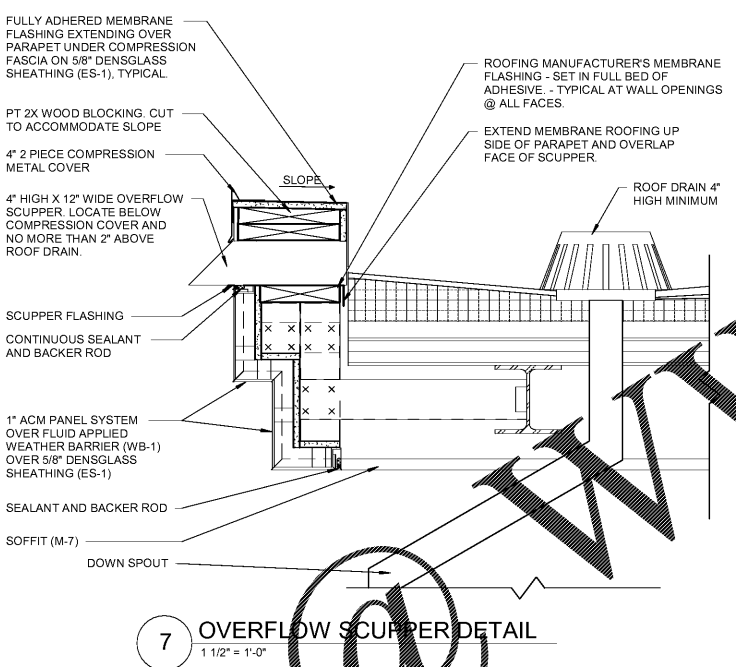
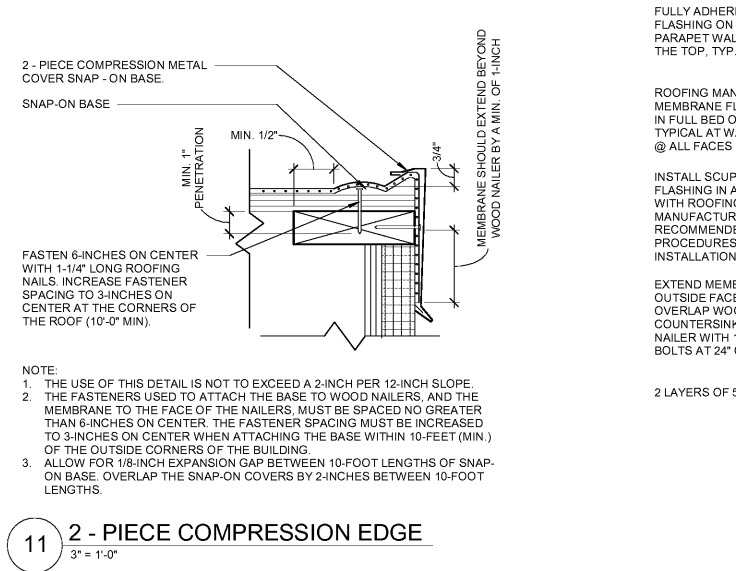
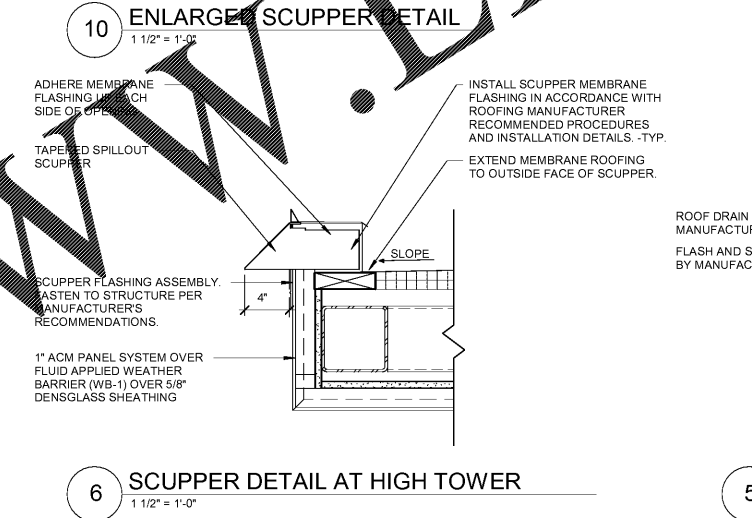
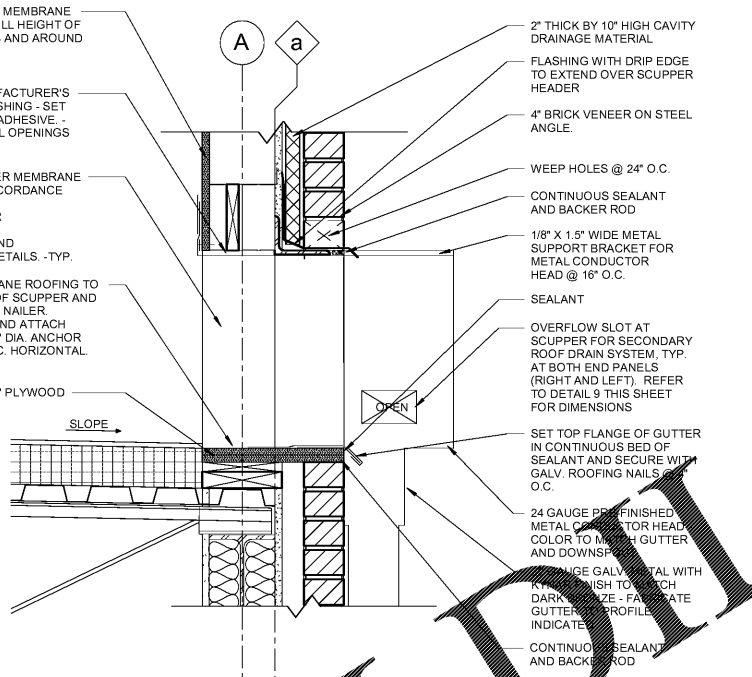
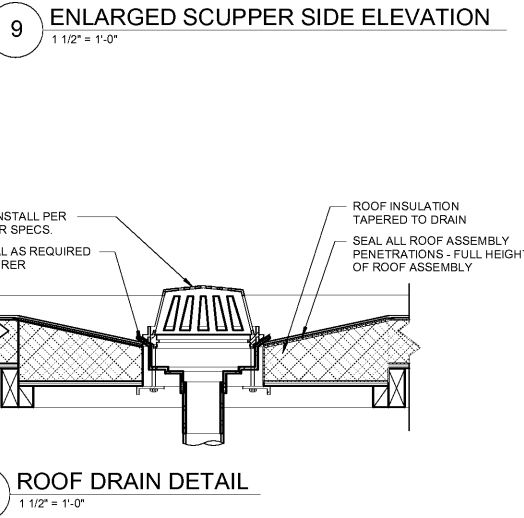
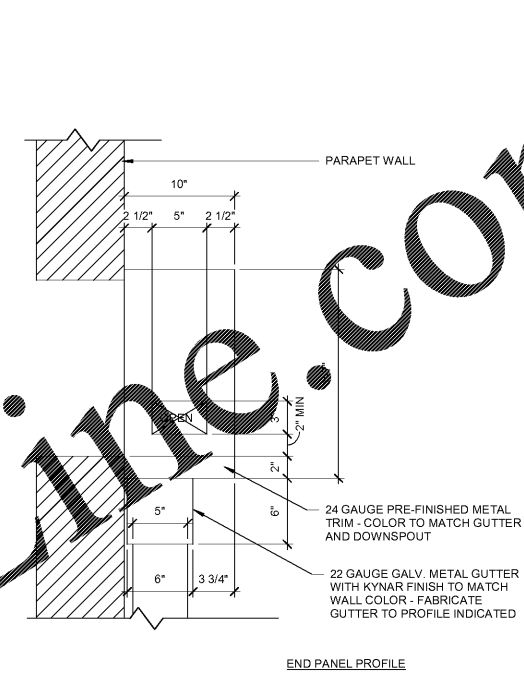


ISSUE/REVISION RECORD

DATE	DESCRIPTION
2016.08.22	PERMIT ISSUE



GENERAL NOTE: ATR HUB'S TO BE PURCHASED FROM DURO-LAST. SUBSTITUTIONS ARE NOT PERMITTED.

NOTE: EQUIPMENT TRADE SUBCONTRACTOR SHALL BE RESPONSIBLE TO PROVIDE CURBS. THE GENERAL CONTRACTOR SHALL BE RESPONSIBLE FOR ANY DECK CUT OUT, STRUCTURAL SUPPORT AND CURB FLASHING.

NOTE 1: ATTACH ATR HUB WITH APPROVED FASTENERS, MINIMUM ONE PER SIDE, OR 18-INCHES ON CENTER THROUGH THE BOTTOM FLANGE.
NOTE 2: WELD THE 6-INCH SKIRT TO THE DECK SHEET MEMBRANE.
NOTE 3: USE APPROVED SEALANT AT ENTRY POINTS TO ENSURE A WATERTIGHT SEAL.
NOTE 4: USE STAINLESS STEEL BANDS ON WIRE STACKS AND TIGHTEN TAKING CARE NOT TO CRUSH THE WIRE, CONDUIT, AND CONDENSER LINE OR OBJECT GOING THROUGH THE STACK FLASHING.
NOTE 5: SECURE PREFINISHED TOP WITH THE TWO SUPPLIED SCREWS.
NOTE 6: TO SEAL UNUSED STACKS PINCH THE END TOGETHER AND WELD CLOSED. WHEN NEEDED, CUT THE WELDED PORTION OFF AND RE-USE ACCORDINGLY.