



HILL FOLEY ROSS & ASSOCIATES
 ARCHITECTURE
 ENGINEERING
 3688 Pleasant Hill Road
 Suite 200
 Duluth, Georgia 30096
 p 770.622.9858
 f 770.622.9535
 www.hillfoleyross.com

© Copyright (as dated) herein
 This drawing and all reproduction thereof are the property of
 Hill Foley Ross & Associates, LLC (HFR). It is intended for the
 sole use of the project named herein. Reproduction without the
 written consent of HFR is prohibited. All rights are to be
 retained by HFR, its parent company and affiliates.

ISSUE/REVISION RECORD

DATE	DESCRIPTION
2018.08.22	PERMIT ISSUE

Racetrac

RACETRAC PETROLEUM, INC.
 200 GALLERIA PKWY SE
 SUITE 900
 ATLANTA, GEORGIA 30339
 (770) 431-7600

PROJECT NAME

GRIFFIN

GRIFFIN
 GEORGIA
 1638 US HWY 41
 GRIFFIN, GA 30223

RACETRAC PROJECT NUMBER

#1242

PROTOTYPE SERIES 5.5K 2.0

PLAN MODIFICATION NOTICE

SPB NO.	DATE

STANDARD PLAN BULLETINS (SPB) MODIFY THE
 PROTOTYPE SERIES SET NOTED ABOVE. THE
 LISTED SPB REPRESENTS THE LATEST
 MODIFICATION INCORPORATED TO THIS
 PROTOTYPE SERIES SET AT ORIGINAL RELEASE.
 THE ISSUE/REVISION RECORD COLUMN ABOVE
 LISTS ANY REVISIONS OR SPB INCORPORATED
 IN THIS SET AFTER THE ORIGINAL RELEASE.
 CONTACT RACETRAC ENGINEERING AND
 CONSTRUCTION FOR ANY SUBSEQUENT
 BULLETINS NOT INCORPORATED HEREIN.

PROFESSIONAL SEAL



PROJECT NUMBER
 17.721.00

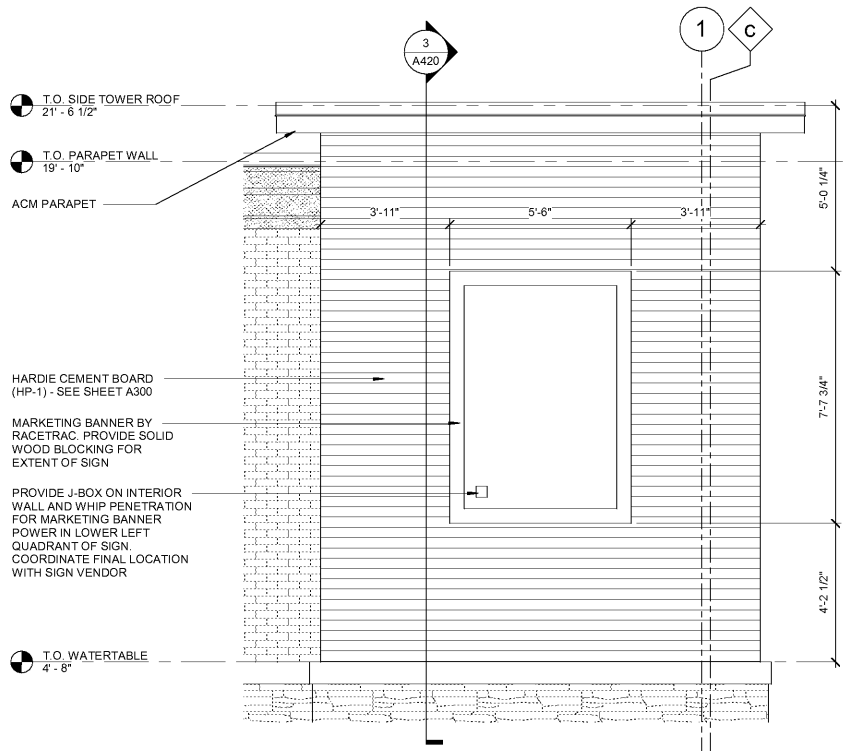
SHEET TITLE

**CORNER TOWER
 PLAN AND DETAILS**

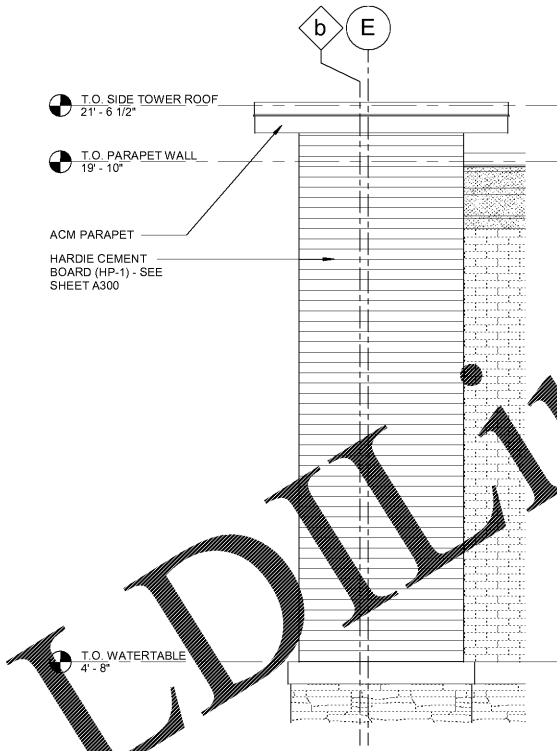
SHEET NUMBER

A126

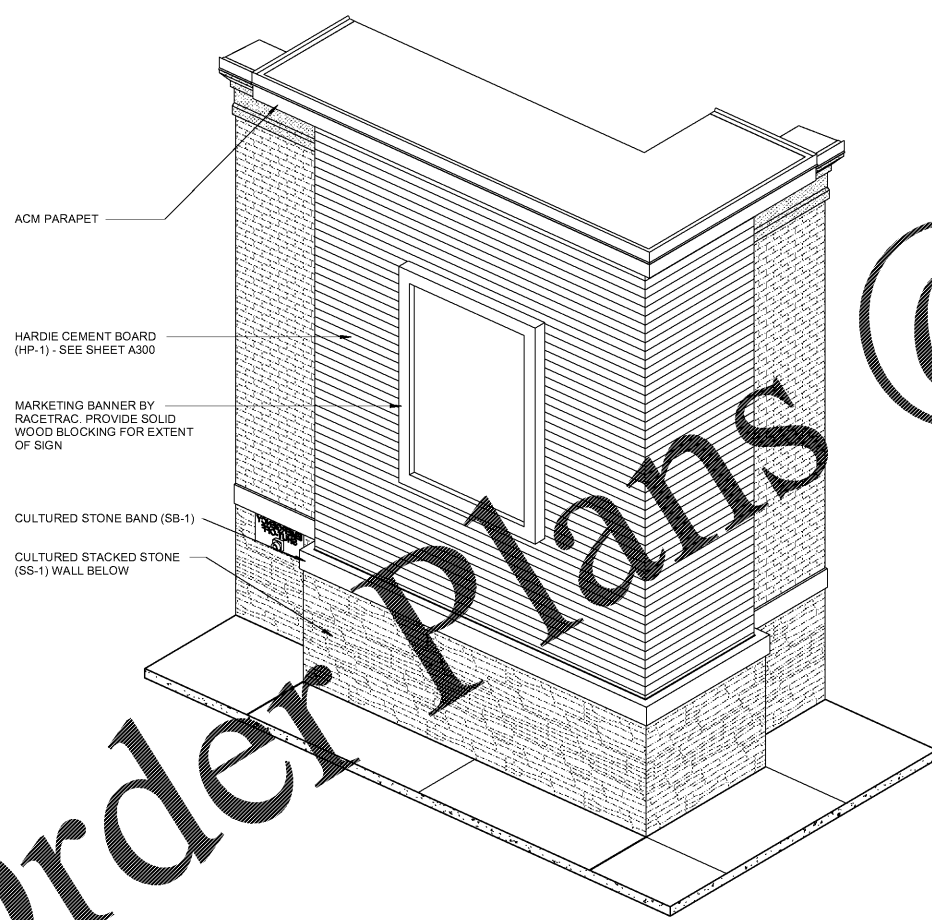
ISSUED FOR PERMIT



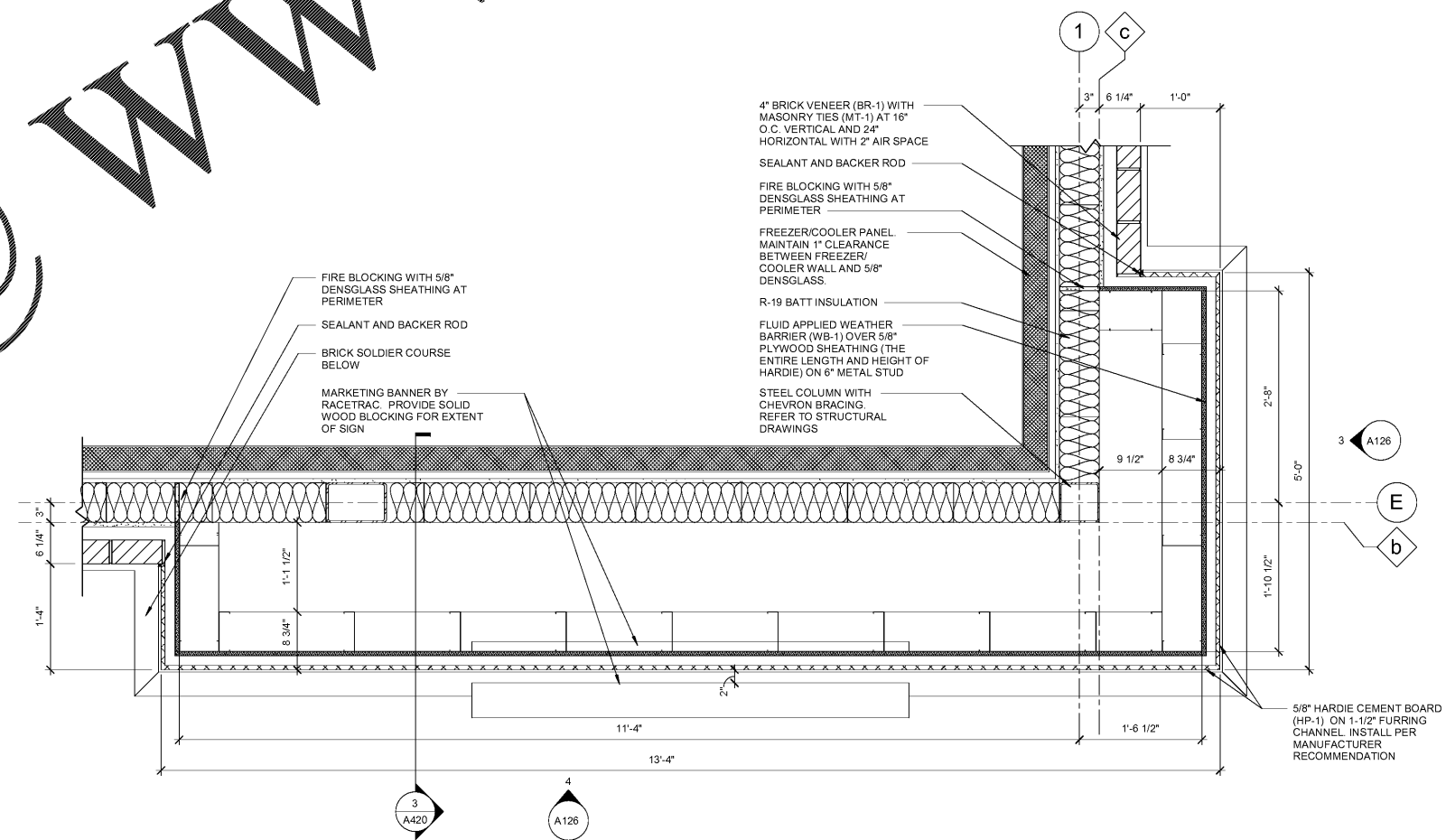
4 CORNER TOWER FRONT ELEVATION
 3/8" = 1'-0"



3 CORNER TOWER SIDE ELEVATION
 3/8" = 1'-0"



2 CORNER TOWER AXONOMETRIC
 1" = 1'-0"



1 CORNER TOWER ENLARGED PLAN
 1" = 1'-0"

Order Plans

WWW.LDIDLINE.COM