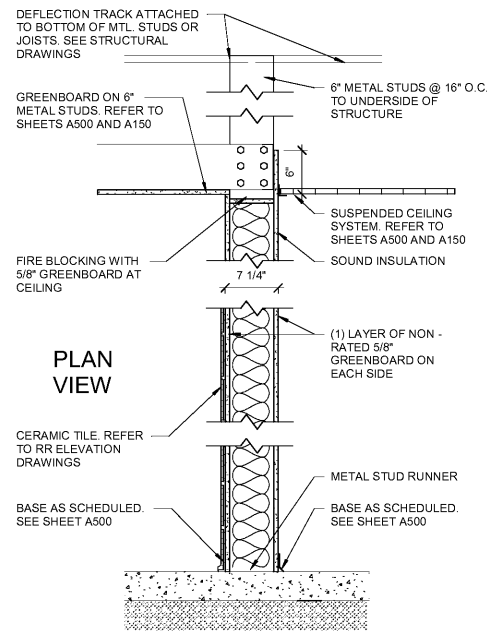
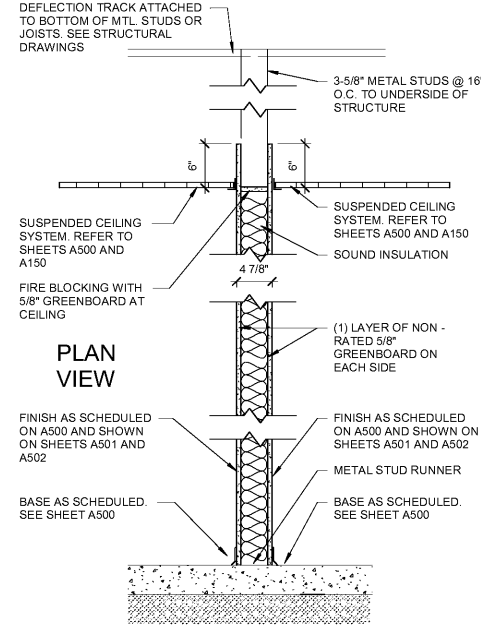


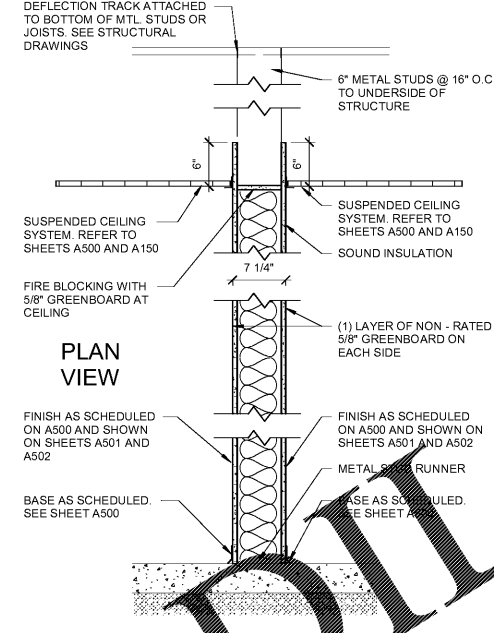
10 PARTITION TYPE P1
1" = 1'-0"



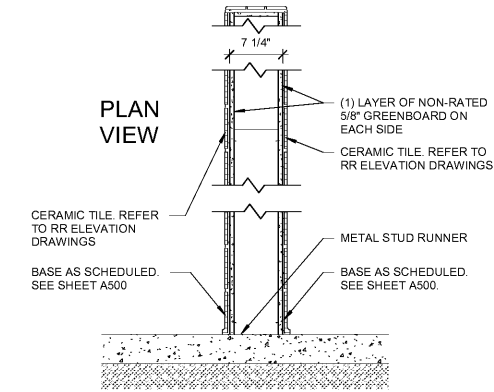
9 PARTITION TYPE P2
1" = 1'-0"



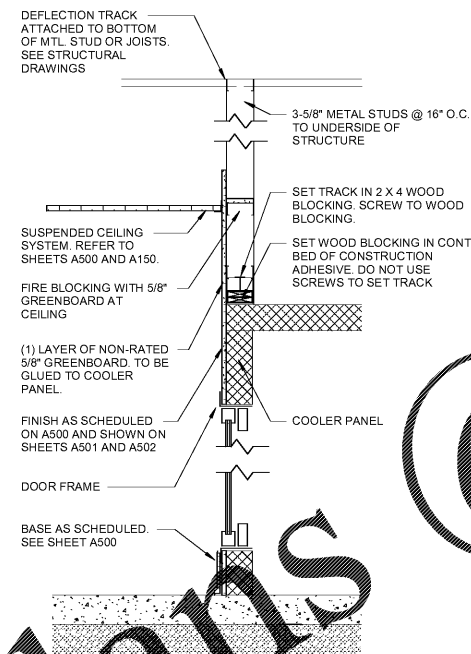
8 PARTITION TYPE P3
1" = 1'-0"



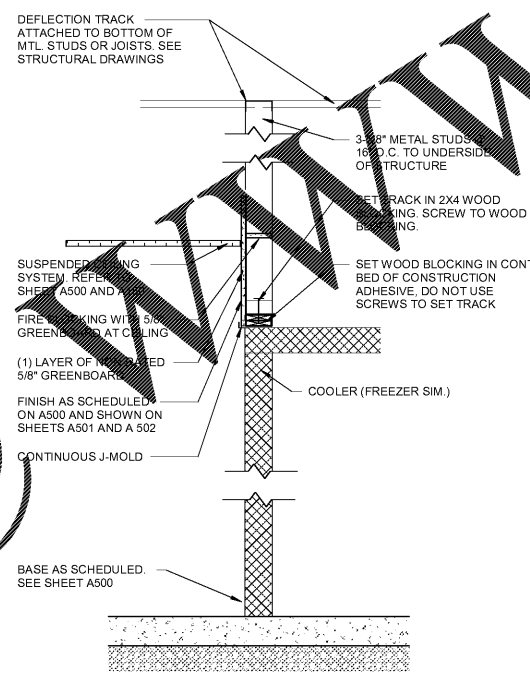
7 PARTITION TYPE P4
1" = 1'-0"



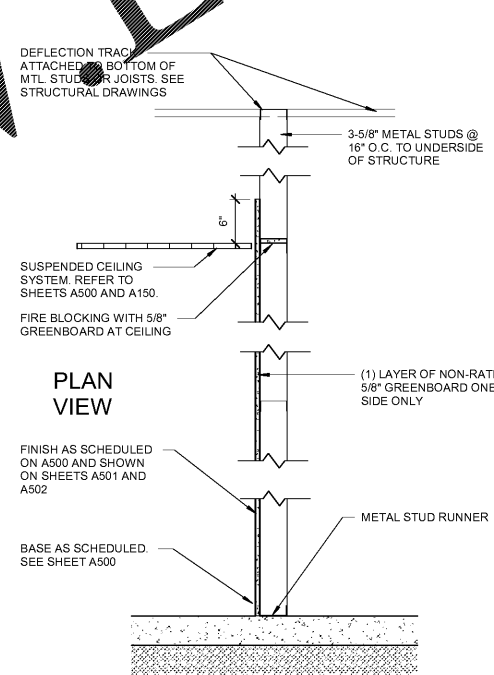
6 PARTITION TYPE P5
1" = 1'-0"



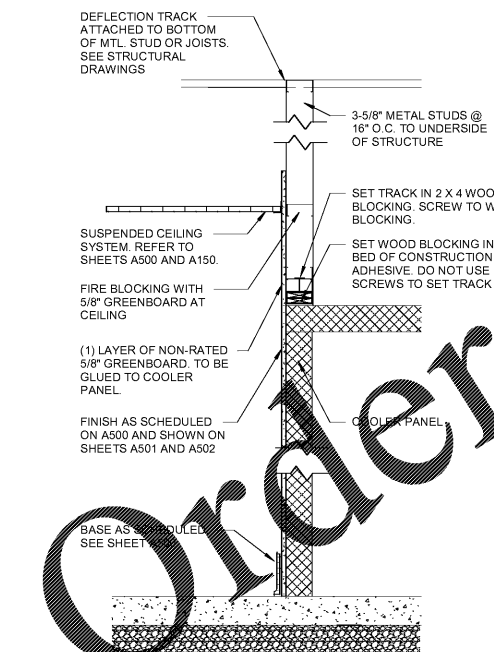
5 PARTITION TYPE P6
1" = 1'-0"



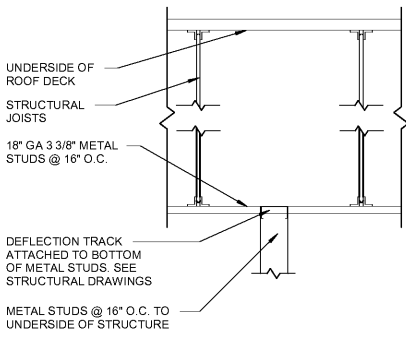
4 PARTITION TYPE P7
1" = 1'-0"



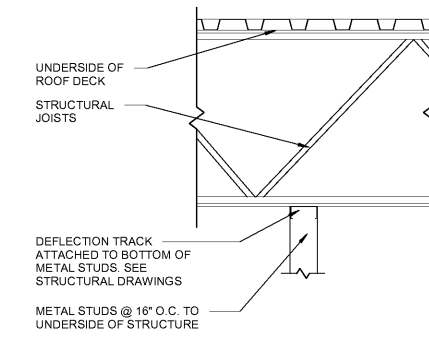
3 PARTITION TYPE P8
1" = 1'-0"



2 PARTITION TYPE P9
1" = 1'-0"



1 TYPICAL ATTACHMENT DETAILS
1" = 1'-0"



1 TYPICAL ATTACHMENT DETAILS
1" = 1'-0"

GENERAL NOTES

1. DO NOT SCALE PLANS.
2. ALL PARTITIONS ARE TO BE ATTACHED TO DEFLECTION TRACK AT THE BOTTOM CHORD OF THE ROOF JOIST OR TO A UNISTRUT. NO PARTITIONS SHALL BE ANCHORED TO THE METAL ROOF DECK.
3. SEE SHEETS A500, A501 AND A502 FOR FINISHES.
4. SEE SHEET A150 FOR CEILING HEIGHTS AND MATERIAL.
5. USE 5/8" PLYWOOD IN LIEU OF GREENBOARD AS REQUIRED FOR SHELVING ATTACHMENT.
6. SEE A501 AND A502 FOR LOCATIONS OF PLYWOOD TO BE PROVIDED BEHIND WALL HUNG EQUIPMENT.
7. PROVIDE ADDITIONAL LAYER OF 1/4" GYPSUM BOARD OVER PLYWOOD WHEN WALL COVERING IS REQUIRED.
8. SEE EXTERIOR ELEVATIONS FOR EXTERIOR WALL TYPES.
9. SEE STRUCTURAL DRAWINGS FOR LIGHT GAUGE FRAMING REQUIREMENTS.

NOTE:

FIRE BLOCKING FOR 'TYPE V' CONSTRUCTION: FIRE BLOCKING SHOULD BE INSTALLED IN AREAS WHICH MAY INCLUDE, BUT ARE NOT LIMITED TO, CONCEALED SPACES OF THE STUD WALLS AND PARTITIONS, INCLUDING FINED SPACES AND PARALLEL ROWS OF STUDS OR STAGGERED STUDS, AS FOLLOWS:
 A. VERTICALLY AT THE CEILING
 B. HORIZONTALLY AT INTERVALS NOT EXCEEDING 10'-0", PROVIDE 5/8" GREENBOARD.

RaceTrac
COPYRIGHT NOTICE

THESE PLANS ARE SUBJECT TO FEDERAL COPYRIGHT LAWS; ANY USE OF SAME WITHOUT THE EXPRESSED WRITTEN PERMISSION OF RACETRAC PETROLEUM, INC. IS PROHIBITED. 2018 RACETRAC PETROLEUM, INC.

DESIGN PROFESSIONALS
HR
 HILFOLLEYROSS & ASSOCIATES

ARCHITECTURE ENGINEERING
 3688 Pleasant Hill Road
 Suite 200
 Duluth, Georgia 30096
 p 770.622.9858
 f 770.622.9535
 www.hilffolleyross.com

ISSUE/REVISION RECORD

DATE	DESCRIPTION
2018.08.22	PERMIT ISSUE

RaceTrac

RACETRAC PETROLEUM, INC.
 200 GALLERIA PKWY SE
 SUITE 900
 ATLANTA, GEORGIA 30339
 (770) 431-7600

PROJECT NAME
GRIFFIN

GRIFFIN GEORGIA
 1638 US HWY 41
 GRIFFIN, GA 30223

RACETRAC PROJECT NUMBER
#1242

PROTOTYPE SERIES 5.5K 2.0
2018 LH MO

PLAN MODIFICATION NOTICE

SPB NO. **DATE**
 STANDARD PLAN BULLETINS (SPB) MODIFY THE PROTOTYPE SERIES SET NOTED ABOVE. THE LISTED SPB REPRESENTS THE LATEST MODIFICATION INCORPORATED TO THIS PROTOTYPE SERIES SET AT ORIGINAL RELEASE. THE ISSUE/REVISION RECORD COLUMN ABOVE LISTS ANY REVISIONS OR SPB INCORPORATED IN THIS SET AFTER THE ORIGINAL RELEASE. CONTACT RACETRAC ENGINEERING AND CONSTRUCTION FOR ANY SUBSEQUENT BULLETINS NOT INCORPORATED HEREIN.

PROFESSIONAL SEAL



PROJECT NUMBER
 17.721.00

SHEET TITLE
PARTITION TYPES

SHEET NUMBER
A111
 ISSUED FOR PERMIT