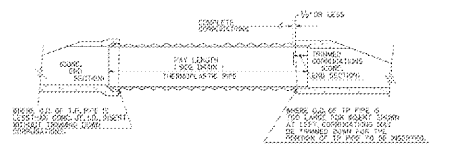
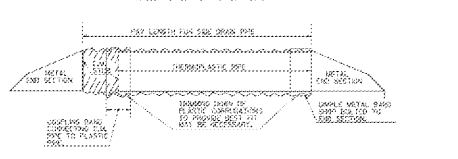


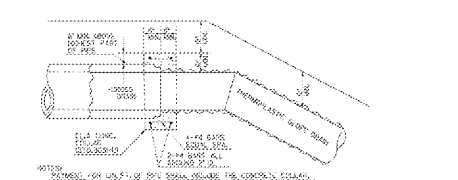
CONCRETE TO THERMOPLASTIC SIDE DRAIN OR CROSS DRAIN CONNECTION ALTERNATES



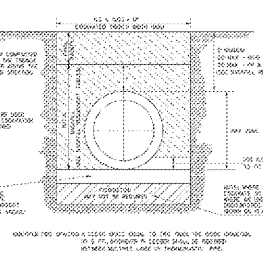
METAL TO THERMOPLASTIC SIDE DRAIN CONNECTION ALTERNATES (SEE GENERAL NOTE NO. 3)



CROSS DRAIN TO THERMOPLASTIC SLOPE DRAIN CONNECTION



THERMOPLASTIC PIPE TRENCH INSTALLATIONS



ALLOWABLE PIPE SIZES

PIPE TYPE	PIPE SIZE (IN)	MINIMUM COVER (IN)	MINIMUM BACKFILL (IN)
STANDARD	12	18	12
	15	24	18
	18	30	24
	24	36	30
STRUCTURAL	12	18	12
	15	24	18
	18	30	24
	24	36	30

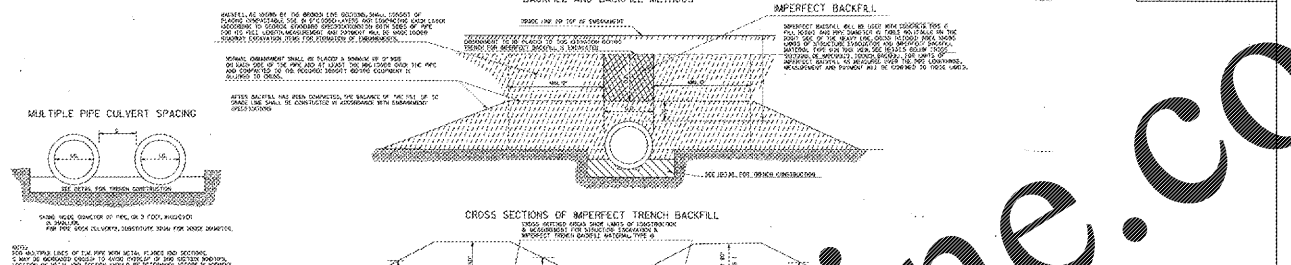
BACKFILL REQUIREMENT TABLES

PIPE TYPE	PIPE SIZE (IN)	MINIMUM COVER (IN)	MINIMUM BACKFILL (IN)
STANDARD	12	18	12
	15	24	18
	18	30	24
	24	36	30
STRUCTURAL	12	18	12
	15	24	18
	18	30	24
	24	36	30

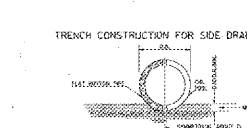
GENERAL NOTES:
 1. UNLESS OTHERWISE SPECIFIED, ALL MATERIALS SHALL BE AS SPECIFIED IN THE STANDARD SPECIFICATIONS FOR HIGHWAY CONSTRUCTION, LATEST EDITION.
 2. THE MINIMUM COVER SHALL BE AS SPECIFIED IN THE STANDARD SPECIFICATIONS FOR HIGHWAY CONSTRUCTION, LATEST EDITION.
 3. THE MINIMUM BACKFILL SHALL BE AS SPECIFIED IN THE STANDARD SPECIFICATIONS FOR HIGHWAY CONSTRUCTION, LATEST EDITION.
 4. MINIMUM PIPE STIFFNESS SHALL BE IN ACCORDANCE WITH AASHTO M 290, TYPE OF THE PIPE AND AS SPECIFIED IN THE STANDARD SPECIFICATIONS FOR HIGHWAY CONSTRUCTION, LATEST EDITION.
 5. METAL LINED SIDE DRAIN PIPE SHALL BE USED FOR ALL APPLICATIONS UNLESS OTHERWISE SPECIFIED IN THE STANDARD SPECIFICATIONS FOR HIGHWAY CONSTRUCTION, LATEST EDITION.
 6. GENERAL BACKFILL MATERIAL SPECIFICATIONS SHALL BE AS SPECIFIED IN THE STANDARD SPECIFICATIONS FOR HIGHWAY CONSTRUCTION, LATEST EDITION.
 7. SPECIAL BACKFILL MATERIAL SPECIFICATIONS SHALL BE AS SPECIFIED IN THE STANDARD SPECIFICATIONS FOR HIGHWAY CONSTRUCTION, LATEST EDITION.
 8. MINIMUM COVER VALUES SHALL BE INCREASED BY 10 PERCENT, EXAMPLE: 18 INCHES SHALL BE INCREASED TO 20 INCHES.
 9. ALL MINIMUM COVER VALUES SHALL BE INCREASED BY 10 PERCENT, EXAMPLE: 18 INCHES SHALL BE INCREASED TO 20 INCHES.
 10. ALL MINIMUM COVER VALUES SHALL BE INCREASED BY 10 PERCENT, EXAMPLE: 18 INCHES SHALL BE INCREASED TO 20 INCHES.

DEPARTMENT OF TRANSPORTATION
 STATE OF GEORGIA
 STANDARD
 THERMOPLASTIC PIPE
 SHEET NO. 1030P
 DATE: SEPTEMBER, 2006

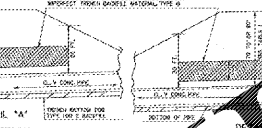
NORMAL BACKFILL, LONGITUDINAL SECTION OF IMPERFECT TRENCH BACKFILL AND BACKFILL METHODS, IMPERFECT BACKFILL



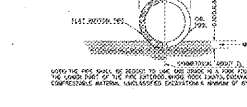
MULTIPLE PIPE CULVERT SPACING



CROSS SECTIONS OF IMPERFECT TRENCH BACKFILL



TRENCH CONSTRUCTION FOR SIDE DRAIN



DETAIL 'A'



DETAIL SHOWING MINIMUM COVER FOR PIPE CULVERTS



TRENCH CONSTRUCTION FOR STORM DRAIN



DEPARTMENT OF TRANSPORTATION
 STATE OF GEORGIA
 STANDARD
 CONCRETE & METAL PIPE CULVERTS
 SHEET NO. 10300
 DATE: SEPTEMBER, 2006

TABLE NO. 1: MINIMUM COVER - CONCRETE TO CORROSION RESISTANT STEEL - CORRUGATED ALUMINUM

PIPE COVER (INCHES)	1-10	10-15	15-20	20-25	25-30	30-35	35-40	40-45	45-50	50-55	55-60	60-65	65-70	70-75	75-80	80-85	85-90	90-95	95-100
12	18	24	30	36	42	48	54	60	66	72	78	84	90	96	102	108	114	120	126
15	24	30	36	42	48	54	60	66	72	78	84	90	96	102	108	114	120	126	132
18	30	36	42	48	54	60	66	72	78	84	90	96	102	108	114	120	126	132	138
24	36	42	48	54	60	66	72	78	84	90	96	102	108	114	120	126	132	138	144

DEPARTMENT OF TRANSPORTATION
 STATE OF GEORGIA
 STANDARD
 CONCRETE & METAL PIPE CULVERTS
 SHEET NO. 10300
 DATE: SEPTEMBER, 2006

TABLE NO. 2: MINIMUM COVER - ALUMINUM SPIRAL RIB PIPE - CONCRETE TO CORROSION RESISTANT STEEL - CORRUGATED ALUMINUM

PIPE COVER (INCHES)	12	15	18	24	30	36	42	48	54	60	66	72	78	84	90	96	102	108	114	120
12	18	24	30	36	42	48	54	60	66	72	78	84	90	96	102	108	114	120	126	132
15	24	30	36	42	48	54	60	66	72	78	84	90	96	102	108	114	120	126	132	138
18	30	36	42	48	54	60	66	72	78	84	90	96	102	108	114	120	126	132	138	144
24	36	42	48	54	60	66	72	78	84	90	96	102	108	114	120	126	132	138	144	150

DEPARTMENT OF TRANSPORTATION
 STATE OF GEORGIA
 STANDARD
 CONCRETE & METAL PIPE CULVERTS
 SHEET NO. 10300
 DATE: SEPTEMBER, 2006

Order Plans @ WWW.LDLINE.COM

10/24/2018
 09/16/2018
 07/06/2018
 07/06/2018
 12/01/2017
 12/01/2017
 09/15/2017

REVISED PER SPALDING COUNTY COMMENTS
 REVISED PER SPALDING COUNTY COMMENTS
 REVISED PER SPALDING COUNTY COMMENTS
 REVISED PER SPALDING COUNTY COMMENTS
 REVISED PER SPALDING COUNTY COMMENTS
 REVISED PER SPALDING COUNTY COMMENTS

REGISTERED PROFESSIONAL ENGINEER
 No. 2218
 A. R. KARIM, P.E.
 A&R Engineering, Inc.
 2100 Kingston Court, Suite O
 Marietta, GA 30067
 (770) 949-0255
 www.arinc.com

DEPARTMENT OF TRANSPORTATION
 STATE OF GEORGIA
 STANDARD
 CONCRETE & METAL PIPE CULVERTS
 SHEET NO. 10300
 DATE: SEPTEMBER, 2006

THESE PLANS ARE SUBJECT TO FEDERAL COPYRIGHT LAWS. ANY USE OF SAME WITHOUT THE EXPRESSED WRITTEN PERMISSION OF RACETRAC PETROLEUM, INC. IS PROHIBITED.

RACETRAC PETROLEUM, INC.
 200 GALLERIA PKWY, S.E.
 SUITE 900 ATLANTA, GA 30339
 (770) 431-7600

Staking & Striping Details
 RACETRAC MARKET
 RaceTrac Griffin
 1638 US Hwy 41
 Spalding County

DATE: 7-24-17
 DRAWN BY: JDE
 CHECK BY: AKA
 DRAWING NUMBER: 16-136
 SHEET NO.: SD6
 REVISION: REV 9