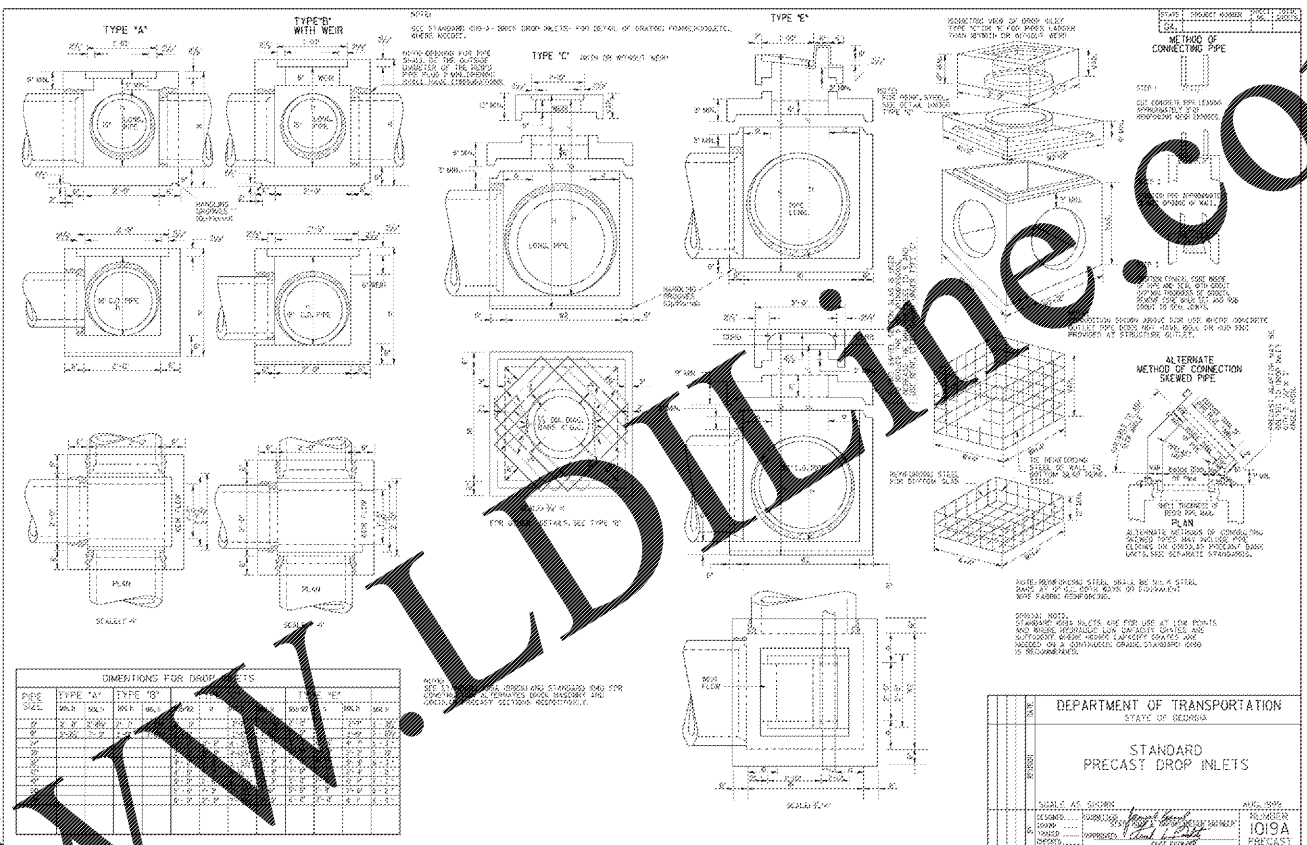
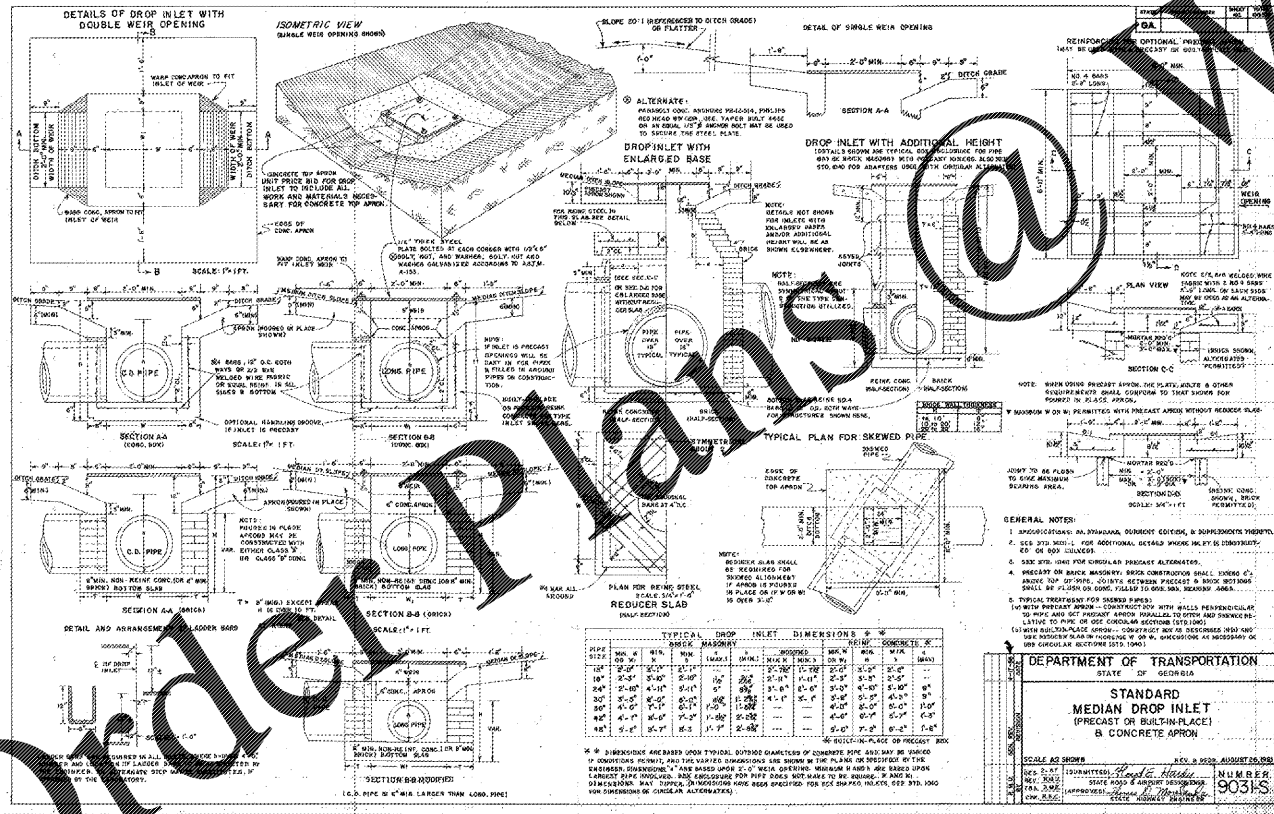


STRUCTURAL PLATE			
DIAMETER	DEPTH	LENGTH	QUANTITY
18"	18"	10'	1.0
24"	24"	10'	1.0
30"	30"	10'	1.0
36"	36"	10'	1.0
42"	42"	10'	1.0
48"	48"	10'	1.0
54"	54"	10'	1.0
60"	60"	10'	1.0
66"	66"	10'	1.0
72"	72"	10'	1.0
78"	78"	10'	1.0
84"	84"	10'	1.0
90"	90"	10'	1.0
96"	96"	10'	1.0
102"	102"	10'	1.0
108"	108"	10'	1.0
114"	114"	10'	1.0
120"	120"	10'	1.0
126"	126"	10'	1.0
132"	132"	10'	1.0
138"	138"	10'	1.0
144"	144"	10'	1.0
150"	150"	10'	1.0
156"	156"	10'	1.0
162"	162"	10'	1.0
168"	168"	10'	1.0
174"	174"	10'	1.0
180"	180"	10'	1.0

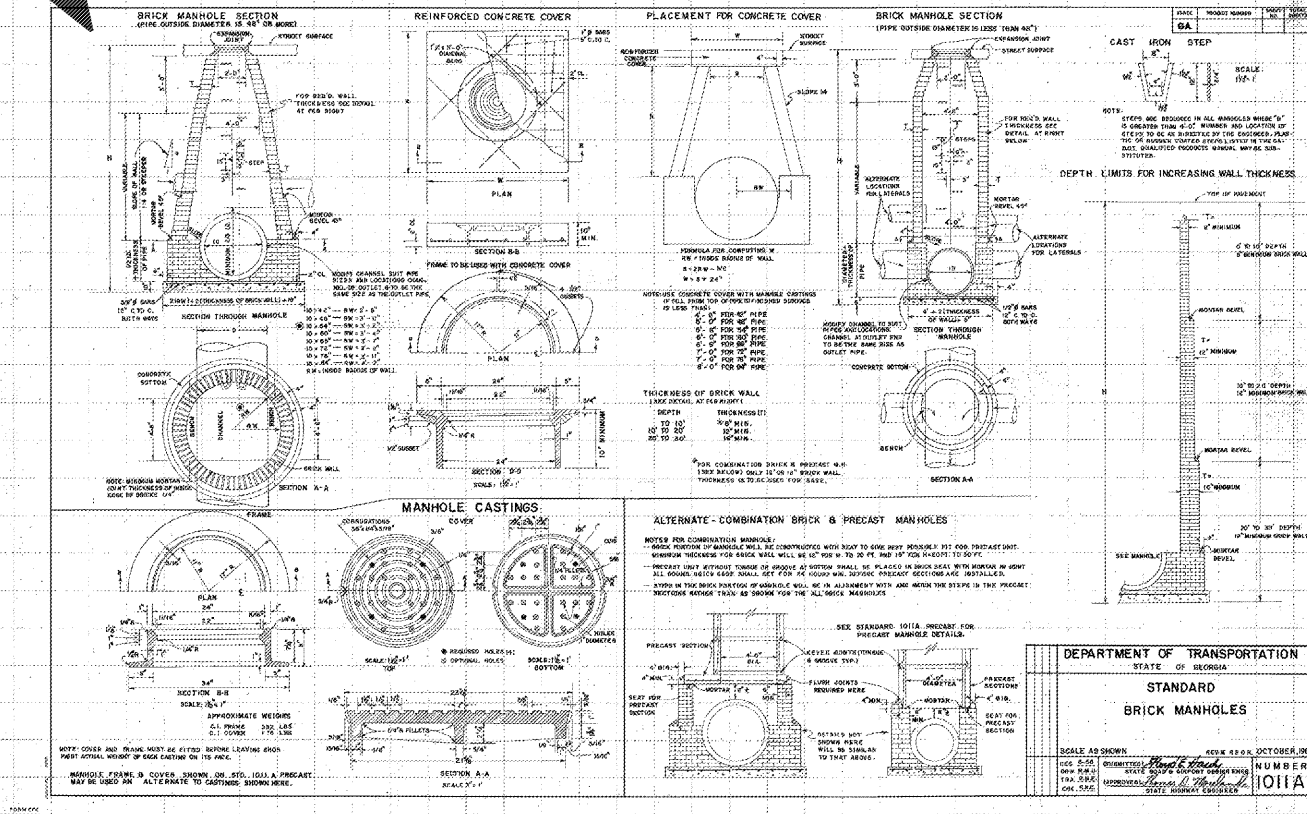
STATE HIGHWAY DEPARTMENT OF GEORGIA
 ENGINEERING DEPARTMENT
 STANDARD
 PIPE-ARCH FOR STRUCTURAL PLATE
 PIPE & PIPE-ARCH CULVERTS
 NO SCALE
 1029 A



DEPARTMENT OF TRANSPORTATION
 STATE OF GEORGIA
 STANDARD
 PRECAST DROP INLETS
 SCALE AS SHOWN
 1019A



DEPARTMENT OF TRANSPORTATION
 STATE OF GEORGIA
 STANDARD
 MEDIAN DROP INLET
 (PRECAST OR BLOCK PLACEMENT)
 & CONCRETE APRON
 SCALE AS SHOWN
 9031S



DEPARTMENT OF TRANSPORTATION
 STATE OF GEORGIA
 STANDARD
 BRICK MANHOLES
 SCALE AS SHOWN
 1011A

10/24/2018
 09/16/2018
 07/06/2018
 07/06/2018
 12/17/2017
 12/17/2017
 09/15/2017

9. REVISED PER SPALDING CO COMMENTS
 8. REVISED PER SPALDING CO COMMENTS
 7. REVISED PER SPALDING CO COMMENTS
 6. REVISED PER SPALDING CO COMMENTS
 5. REVISED SET PER SPALDING COUNTY PLAN REVIEW
 4. REVISED SET PER SPALDING COUNTY PLAN REVIEW
 3. REVISED SET PER RT INTERNAL REVIEW / SPALDING COUNTY PLAN REVIEW
 2. REVISED SET PER RT INTERNAL REVIEW / SPALDING COUNTY PLAN REVIEW
 1. REVISED SET PER RT INTERNAL REVIEW / SPALDING COUNTY PLAN REVIEW

NO REVISIONS

REGISTERED PROFESSIONAL ENGINEER
 No. 22518
 A.R. Griffin
 2100 Kingston Court, Suite 10
 Marietta, GA 30067
 (770) 940-0255
 www.argriffin.com

A&R Engineering, Inc.
 THESE PLANS ARE SUBJECT TO FEDERAL COPYRIGHT LAWS. ANY USE OF SAME WITHOUT THE EXPRESS WRITTEN PERMISSION OF RACETRAC PETROLEUM, INC. IS PROHIBITED.

RACETRAC PETROLEUM, INC.
 200 GALLERIA PKWY, SE
 SUITE 900 ATLANTA, GA 30339
 (770) 431-7600

Staking & Striping Details
 RACETRAC MARKET
 RaceTrac Griffin
 1638 US Hwy 41
 Spalding County

DATE: 7-24-17
 DRAWN BY: JDE
 CHECK BY: AKA
 DRAWING NAME: 16-136
 SD5 REV 9
 SHEET NO. REVISION