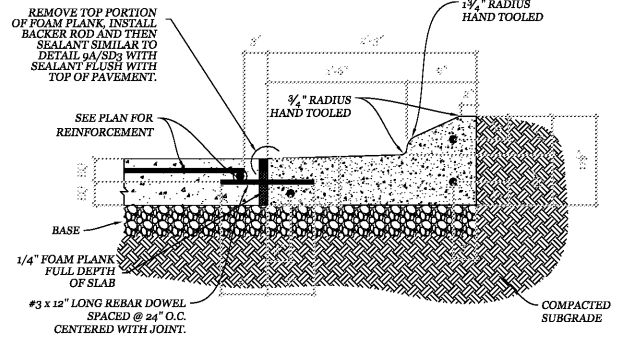


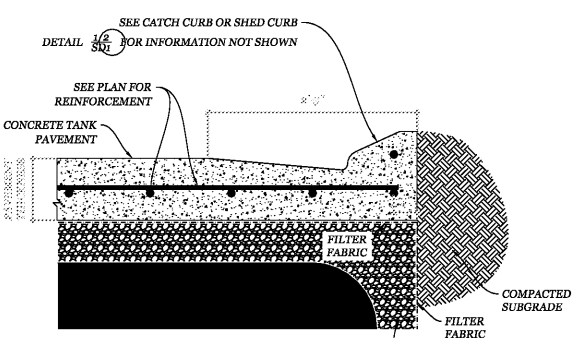
CATCH CURB DETAIL @ CONCRETE SLAB N.T.S.

1. CURB CONSTRUCTION AND CONTRACTION JOINTS LOCATIONS NOT TO EXCEED 10 FEET. SAWCUT CONTRACTION JOINTS 1/8" WIDE BY 1-1/2" DEEP AS SHOWN AS CONCRETE HAS HARDENED SUFFICIENTLY TO PREVENT RAVELING OR DISLODGING OF AGGREGATES. SAWCUT CONTRACTION JOINTS 1/8" WIDE BY 1" DEEP. FILL JOINTS WITH PAVEMENT SEALANT PER DETAIL 9A/SD1. VERIFY JOINT LOCATIONS WITH THE OWNER'S REPRESENTATIVE.



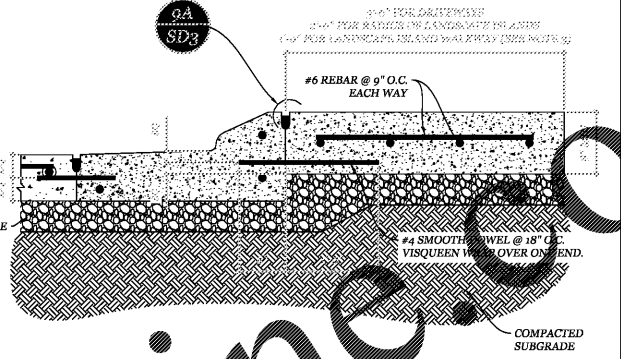
SHED CURB DETAIL @ CONCRETE SLAB N.T.S.

1. SEE NOTE ONE ON DETAIL 1/SD1 FOR CONSTRUCTION AND CONTRACTION JOINTS INFORMATION.
2. USE DETAIL WHEN ADJACENT PAVEMENT SLOPES AWAY FROM CURBING.



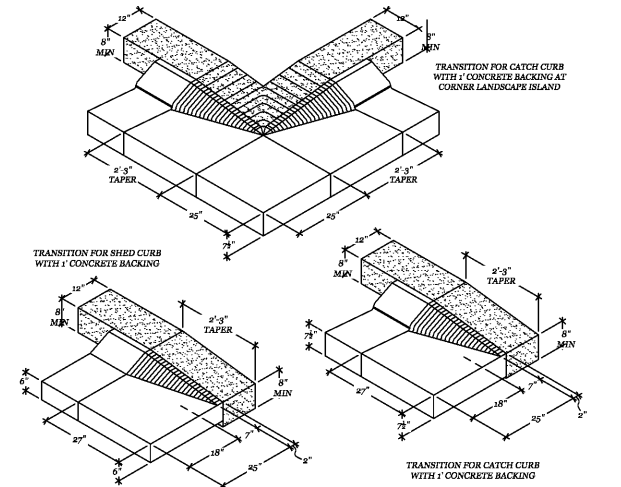
TANK AREA CURB DETAIL N.T.S.

1. SEE NOTE ONE ON DETAIL 1/SD1 FOR CONSTRUCTION AND CONTRACTION JOINTS INFORMATION.
2. THIS CURB TYPE IS TO BE USED ALONG THE CURB LINE ADJACENT TO THE TANK PAVEMENT. SEE PLAN FOR LOCATION.



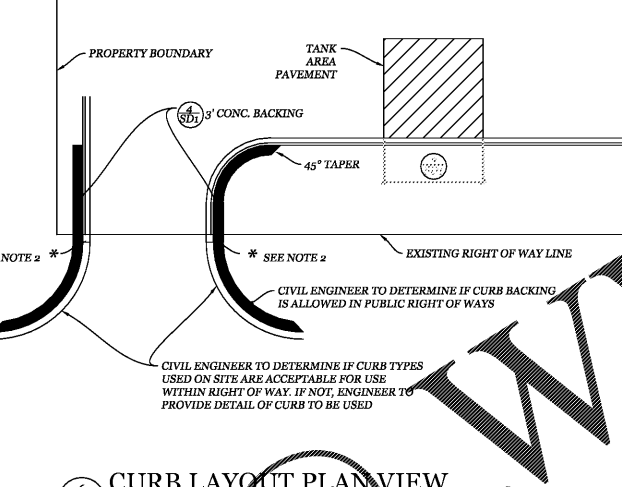
CONCRETE BACKING FOR ON-SITE CURB N.T.S.

1. SEE NOTE ONE ON DETAIL 1/SD1 FOR CONSTRUCTION AND CONTRACTION JOINTS INFORMATION.
2. THREE (3) FOOT BACKING IS TO BE USED ALONG THE RADIUS OF DRIVEWAYS. TWO (2) FOOT BACKING IS TO BE USED ALONG THE RADIUS OF LANDSCAPE ISLANDS WITHIN HIGH TRAFFIC AREAS. ONE FOOT BACKING IS TO BE USED AS A PEDESTRIAN WALKWAY WITHIN LANDSCAPE ISLANDS.
3. LANDSCAPE ISLANDS HAVE TO BE INCREASED, DUE TO THE ONE (1) FOOT BACKING TO MEET SQUARE FOOTAGE REQUIREMENTS AND PARKING SPACES ARE LOST, ONE (1) FOOT BACKING WILL NOT BE USED IN THOSE AREAS.
4. SEE PLAN FOR LOCATIONS FOR CURB BACKING.



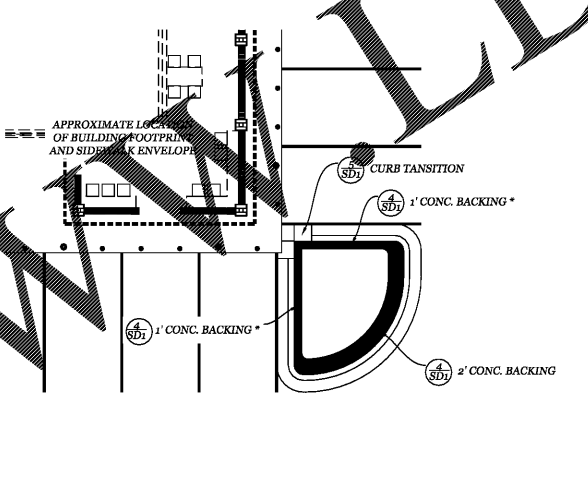
CURB TRANSITION DETAILS N.T.S.

1. SEE SITE PLAN FOR EXACT LOCATIONS



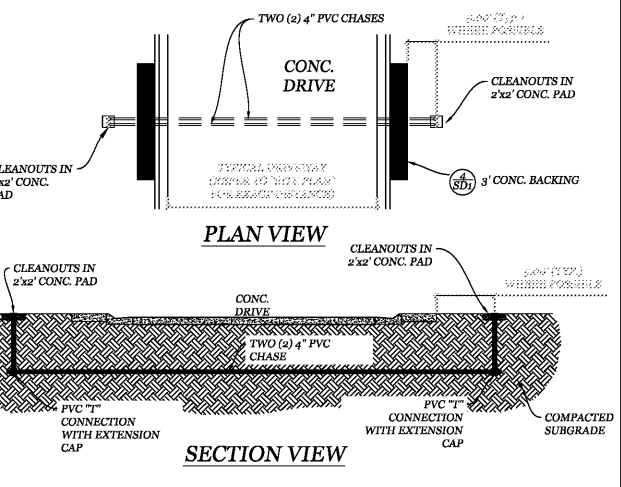
CURB LAYOUT PLAN VIEW N.T.S.

1. REFER TO 'SITE PLAN' FOR EXACT LOCATIONS OF THE DIFFERING CURB TYPES.
2. * = RACETRAC CONSTRUCTION PROJECT MANAGER TO COORDINATE WITH CONCRETE SUBCONTRACTOR TO DETERMINE BEST TRANSITION METHOD BETWEEN DIFFERING CURB TYPES.



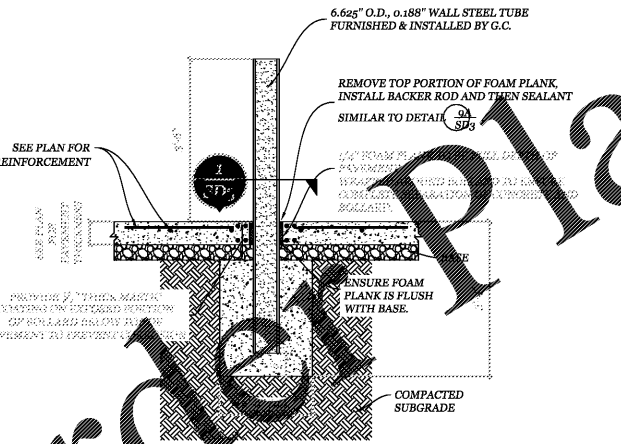
CONCRETE BACKING PLAN VIEW N.T.S.

1. REFER TO 'SITE PLAN' FOR EXACT LOCATIONS OF THE DIFFERING CURB TYPES.
2. * IF LANDSCAPE ISLANDS HAVE TO BE INCREASED, DUE TO THE ONE (1) FOOT BACKING, TO MEET SQUARE FOOTAGE REQUIREMENTS AND PARKING SPACES ARE LOST, ONE (1) FOOT BACKING WILL NOT BE USED IN THOSE AREAS. REFER TO SITE PLAN FOR EXACT LOCATIONS.



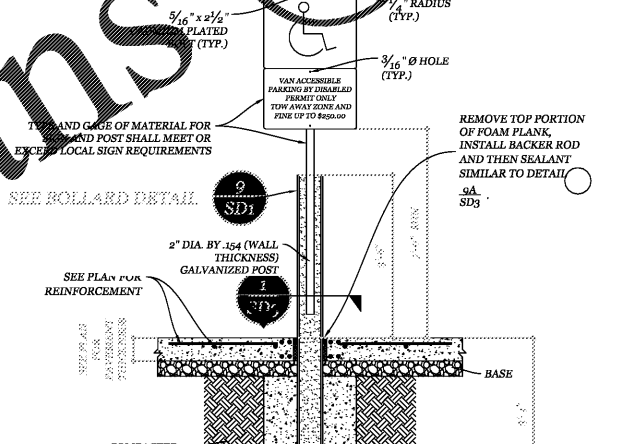
PVC CHASE DETAIL N.T.S.

1. PVC CHASE TO BE PLACED UNDER ALL DRIVEWAYS. (REFER TO 'SITE PLAN' FOR EXACT LOCATIONS)
2. CHASES ARE NOT TO BE USED FOR IRRIGATION INSTALLED WITH THIS DEVELOPMENT. IRRIGATION SLEEVES WILL BE SEPARATE. REFER TO UTILITY PLAN AND SHEET '1-2.1' FOR IRRIGATION SLEEVES LOCATIONS.



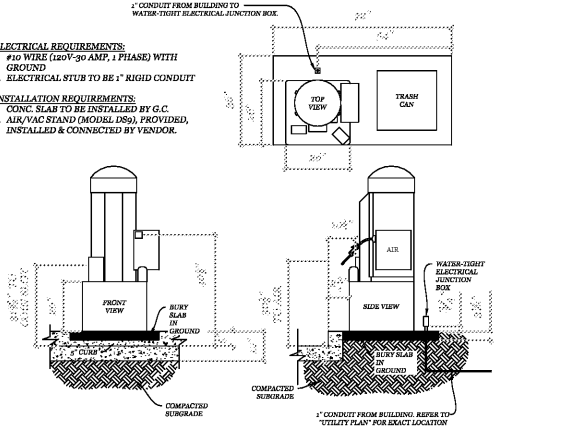
TYP. ROLLARD DETAIL N.T.S.

1. BUMPER POSTS TO BE PLUMB AND ALIGNED IN A STRAIGHT LINE AND FILLED WITH CONCRETE.
2. TOPS TO BE GROUND SMOOTH W/ SQUARE EDGE, THE PRIMED WITH 'END RUST' BY DURO AND PAINTED WITH INDUSTRIAL OIL BASED ENAMEL. COLOR TO MATCH DECORATIVE LIGHT POLES.
3. REFER TO PAVING PLAN FOR EXACT CONCRETE THICKNESS.
4. REFER TO PAVING PLAN FOR CONCRETE COMPRESSIVE STRENGTH & SUBGRADE COMPACTION REQUIREMENTS.



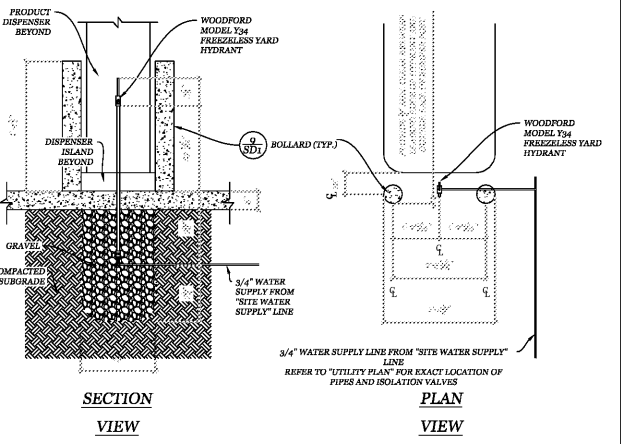
TYP. HANDICAP SIGNAGE DETAIL N.T.S.

1. REFER TO LOCAL JURISDICTION REQUIREMENTS FOR SPECIFIC DETAILS.
2. CONTRACTOR SHALL VERIFY ALL THE REQUIRED INFORMATION NECESSARY AT EACH SIGN WITH LOCAL AUTHORITIES PRIOR TO PURCHASING.



AIR/VAC SERVICE DETAIL N.T.S.

1. SECURE VAULT TO PAD W/ TWO (2) 29-00450 ANGLE BRACKETS AND FOUR (4) 1/4" x 4" SIMPSON TITAN HD SCREW TYPE ANCHORS (TYP.)
2. REFER TO PAVING PLAN FOR EXACT CONCRETE THICKNESS.
3. REFER TO PAVING PLAN FOR CONCRETE COMPRESSIVE STRENGTH & SUBGRADE COMPACTION REQUIREMENTS.



YARD HYDRANT DETAIL N.T.S.

1. SEE 'SITE PLAN' FOR EXACT LOCATIONS.
2. REFER TO PAVING PLAN FOR EXACT CONCRETE THICKNESS.
3. REFER TO PAVING PLAN FOR CONCRETE COMPRESSIVE STRENGTH & SUBGRADE COMPACTION REQUIREMENTS.

Order Plans @ www.dline.com

10/24/2018	REVISED PER SPALDING CO COMMENTS	DATE	
09/16/2018	REVISED PER CITY OF GRIFFIN / RT INTERNAL COMMENTS	DATE	
07/06/2018	REVISED PER EED DROP OF 4"	DATE	
07/06/2018	REVISED SET DRAINAGE IN RM PER GOOD COMMENTS	DATE	
12/12/2017	REVISED SET PER SPALDING COUNTY PLAN REVIEW	DATE	
12/12/2017	REVISED SET PER RT INTERNAL REVIEW / SPALDING COUNTY PLAN REVIEW	DATE	
12/12/2017	REVISED SET PER RT INTERNAL REVIEW / SPALDING COUNTY PLAN REVIEW	DATE	
09/15/2017	REVISED SET PER RT INTERNAL REVIEW / SPALDING COUNTY PLAN REVIEW	DATE	
		NO	

A&R Engineering, Inc.
 No. 22518 PROFESSIONAL ENGINEER
 A&R ENGINEERING, INC.
 2160 Kingston Court, Suite O
 Marietta, GA 30067
 (770) 980-0255
 www.aaring.com

RT Standard Details
 RACETRAC MARKET
 RaceTrac Griffin
 1638 US Hwy 41
 Spalding County

THESE PLANS ARE SUBJECT TO FEDERAL COPYRIGHT LAWS. ANY USE OF SAME WITHOUT THE EXPRESSED WRITTEN PERMISSION OF RACETRAC PETROLEUM, INC. IS PROHIBITED.

DATE: 7-24-17
 DRAWN BY: JDE
 CHECK BY: AKA
 DRAWING NAME: 16-136
 SD1 REV 9
 SHEET NO. REVISION