



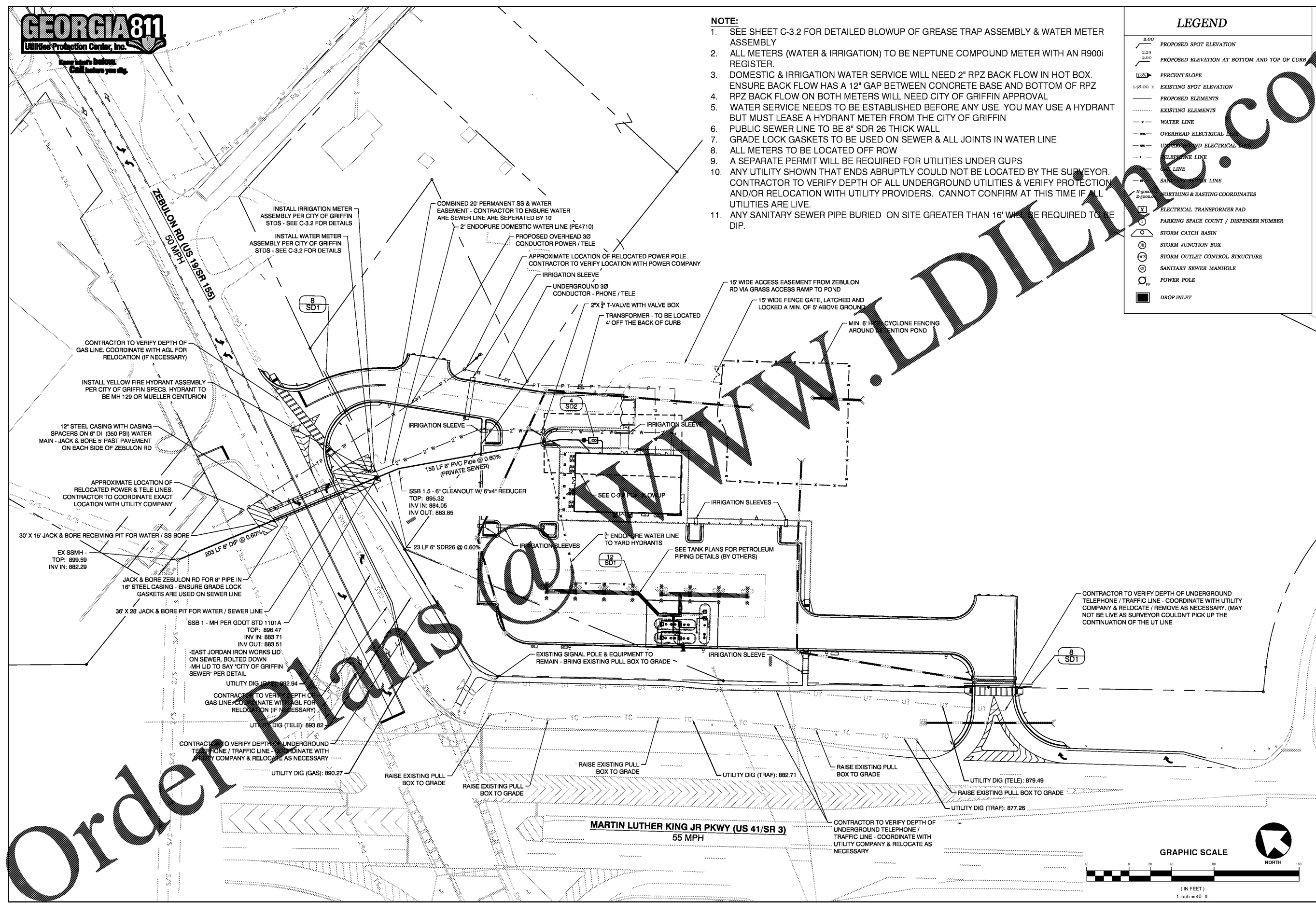
Know what's below. Call before you dig.

- NOTE:**
1. SEE SHEET C-3.2 FOR DETAILED BLOWUP OF GREASE TRAP ASSEMBLY & WATER METER ASSEMBLY
 2. ALL METERS (WATER & IRRIGATION) TO BE NEPTUNE COMPOUND METER WITH AN R9001 REGISTER.
 3. DOMESTIC & IRRIGATION WATER SERVICE WILL NEED 2" RPZ BACK FLOW IN HOT BOX. ENSURE BACK FLOW HAS A 12" GAP BETWEEN CONCRETE BASE AND BOTTOM OF RPZ
 4. RPZ BACK FLOW ON BOTH METERS WILL NEED CITY OF GRIFFIN APPROVAL
 5. WATER SERVICE NEEDS TO BE ESTABLISHED BEFORE ANY USE. YOU MAY USE A HYDRANT BUT MUST LEASE A HYDRANT METER FROM THE CITY OF GRIFFIN
 6. PUBLIC SEWER LINE TO BE 8" SDR 26 THICK WALL
 7. GRADE LOCK GASKETS TO BE USED ON SEWER & ALL JOINTS IN WATER LINE
 8. ALL METERS TO BE LOCATED OFF ROW
 9. A SEPARATE PERMIT WILL BE REQUIRED FOR UTILITIES UNDER GUPS
 10. ANY UTILITY SHOWN THAT ENDS ABRUPTLY COULD NOT BE LOCATED BY THE SURVEYOR. CONTRACTOR TO VERIFY DEPTH OF ALL UNDERGROUND UTILITIES & VERIFY PROTECTION AND/OR RELOCATION WITH UTILITY PROVIDERS. CANNOT CONFIRM AT THIS TIME IF ALL UTILITIES ARE LIVE.
 11. ANY SANITARY SEWER PIPE BURIED ON SITE GREATER THAN 16' WILL BE REQUIRED TO BE DIP.

LEGEND

2.00	PROPOSED SPOT ELEVATION
2.29	PROPOSED ELEVATION AT BOTTOM AND TOP OF CURB
2.00	PERCENT SLOPE
148.00 x	EXISTING SPOT ELEVATION
---	PROPOSED ELEMENTS
---	EXISTING ELEMENTS
---	WATER LINE
---	OVERHEAD ELECTRICAL
---	UNDERGROUND ELECTRICAL
---	TELEPHONE LINE
---	TRAFFIC LINE
---	SANITARY SEWER LINE
N 500.00 E 5000.00	NORTHING & EASTING COORDINATES
X	ELECTRICAL TRANSFORMER PAD
P	PARKING SPACE COUNT / DISPENSER NUMBER
O	STORM CATCH BASIN
⊕	STORM JUNCTION BOX
⊖	STORM OUTLET CONTROL STRUCTURE
⊙	SANITARY SEWER MANHOLE
⊙	POWER POLE
■	DROP INLET

NO	REVISIONS	DATE
9	REVISED PER SPALDING CO COMMENTS	10/24/2018
8	REVISED PER SPALDING CO COMMENTS	09/16/2018
7	REVISED PER SPALDING CO COMMENTS	07/06/2018
6	REVISED SET DRAINAGE IN ROW PER GOOD COMMENTS	07/06/2018
5	REVISED SET PER SPALDING COUNTY PLAN REVIEW	12/12/2017
4	REVISED SET PER SPALDING COUNTY PLAN REVIEW	12/12/2017
3	REVISED SET PER RT INTERNAL REVIEW / SPALDING COUNTY PLAN REVIEW	12/12/2017
2	REVISED SET PER RT INTERNAL REVIEW / SPALDING COUNTY PLAN REVIEW	12/12/2017
1	REVISED SET PER RT INTERNAL REVIEW / SPALDING COUNTY PLAN REVIEW	09/15/2017



Order Plans

www.LDILLINE.com



A&R Engineering, Inc.
 2160 Kingston Court, Suite O
 Marietta, GA 30067
 (770) 980-9255
 www.aaring.com

THESE PLANS ARE SUBJECT TO FEDERAL COPYRIGHT LAWS. ANY USE OF SAME WITHOUT THE EXPRESSED WRITTEN PERMISSION OF RACETRAC PETROLEUM, INC. IS PROHIBITED.



RACETRAC PETROLEUM, INC.
 200 GALLERIA PKWY, S.E.
 SUITE 900 ATLANTA, GA 30339
 (770) 431-7600

Utility Plan
RACETRAC MARKET
RaceTrac Griffin
 1638 US Hwy 41
 Spalding County

DATE	7-24-17
DRAWN BY	JDE
CHECK BY	AKA
DRAWING NAME	16-136
C-3.1	REV 9
SHEET NO.	REVISION

