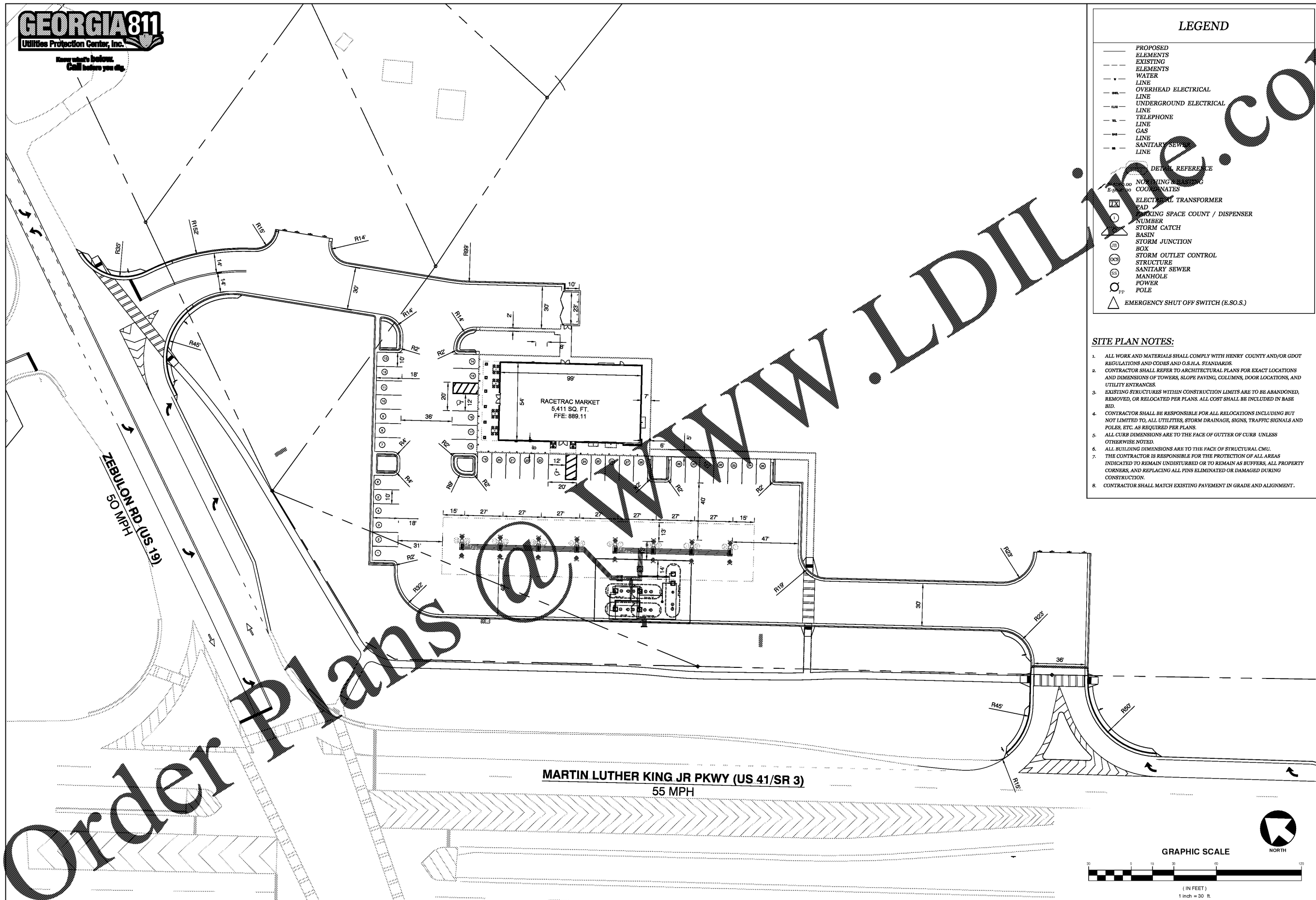




Know what's below.  
Call before you dig.



### LEGEND

- PROPOSED ELEMENTS
- - - EXISTING ELEMENTS
- WATER LINE
- OVERHEAD ELECTRICAL LINE
- UNDERGROUND ELECTRICAL LINE
- TELEPHONE LINE
- GAS LINE
- SANITARY SEWER LINE
- DETAIL REFERENCE
- NO. OF SET DRAINAGE IN ROW PER GDOT COMMENTS
- ELECTRICAL TRANSFORMER PAD
- PARKING SPACE COUNT / DISPENSER NUMBER
- STORM CATCH BASIN
- STORM JUNCTION BOX
- STORM OUTLET CONTROL STRUCTURE
- SANITARY SEWER MANHOLE
- POWER POLE
- EMERGENCY SHUT OFF SWITCH (E.S.O.S.)

### SITE PLAN NOTES:

1. ALL WORK AND MATERIALS SHALL COMPLY WITH HENRY COUNTY AND/OR GDOT REGULATIONS AND CODES AND O.S.H.A. STANDARDS.
2. CONTRACTOR SHALL REFER TO ARCHITECTURAL PLANS FOR EXACT LOCATIONS AND DIMENSIONS OF TOWERS, SLOPE PAVING, COLUMNS, DOOR LOCATIONS, AND UTILITY ENTRANCES.
3. EXISTING STRUCTURES WITHIN CONSTRUCTION LIMITS ARE TO BE ABANDONED, REMOVED, OR RELOCATED PER PLANS. ALL COST SHALL BE INCLUDED IN BASE BID.
4. CONTRACTOR SHALL BE RESPONSIBLE FOR ALL RELOCATIONS INCLUDING BUT NOT LIMITED TO, ALL UTILITIES, STORM DRAINAGE, SIGNS, TRAFFIC SIGNALS AND POLES, ETC. AS REQUIRED PER PLANS.
5. ALL CURB DIMENSIONS ARE TO THE FACE OF GUTTER OF CURB UNLESS OTHERWISE NOTED.
6. ALL BUILDING DIMENSIONS ARE TO THE FACE OF STRUCTURAL CMU.
7. THE CONTRACTOR IS RESPONSIBLE FOR THE PROTECTION OF ALL AREAS INDICATED TO REMAIN UNDISTURBED OR TO REMAIN AS BUFFERS, ALL PROPERTY CORNERS, AND REPLACING ALL PINS ELIMINATED OR DAMAGED DURING CONSTRUCTION.
8. CONTRACTOR SHALL MATCH EXISTING PAVEMENT IN GRADE AND ALIGNMENT.

NO	REVISIONS	DATE
9	REVISED PER SPALDING CO COMMENTS	10/24/2018
8	REVISED PER SPALDING CO (CITY OF GRIFFIN / RT INTER)	09/16/2018
7	REVISED PER EEE DROP OF 4"	07/06/2018
6	REVISED SET PER GDOT COMMENTS	07/07/2018
5	REVISED SET PER SPALDING COUNTY PLAN REVIEW	12/12/2017
4	REVISED SET PER SPALDING COUNTY PLAN REVIEW	12/12/2017
3	REVISED SET PER RT INTERNAL REVIEW / SPALDING COUNTY PLAN REVIEW	12/12/2017
2	REVISED SET PER RT INTERNAL REVIEW / SPALDING COUNTY PLAN REVIEW	12/12/2017
1	REVISED SET PER RT INTERNAL REVIEW / SPALDING COUNTY PLAN REVIEW	09/15/2017

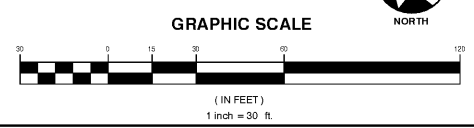


**A&R Engineering, Inc.**  
 2160 Kingston Court, Suite O  
 Marietta, GA 30067  
 (770) 980-9255  
 www.aaring.com

THESE PLANS ARE SUBJECT TO FEDERAL COPYRIGHT LAWS. ANY USE OF SAME WITHOUT THE EXPRESSED WRITTEN PERMISSION OF RACETRAC PETROLEUM, INC. IS PROHIBITED.

**Racetrac**  
 RACETRAC PETROLEUM, INC.  
 200 GALLERIA PKWY, S.E.  
 SUITE 900 ATLANTA, GA 30339  
 (770) 431-7600

<b>Horizontal Control Plan</b>	
RACETRAC MARKET	
RaceTrac Griffin 1638 US Hwy 41 Spalding County	
DATE	7-24-17
DRAWN-BY	JDE
CHECK-BY	AKA
DRAWING NAME	16-136
<b>C-1.5</b>	REV 9
SHEET NO.	REVISION



# Order Plans