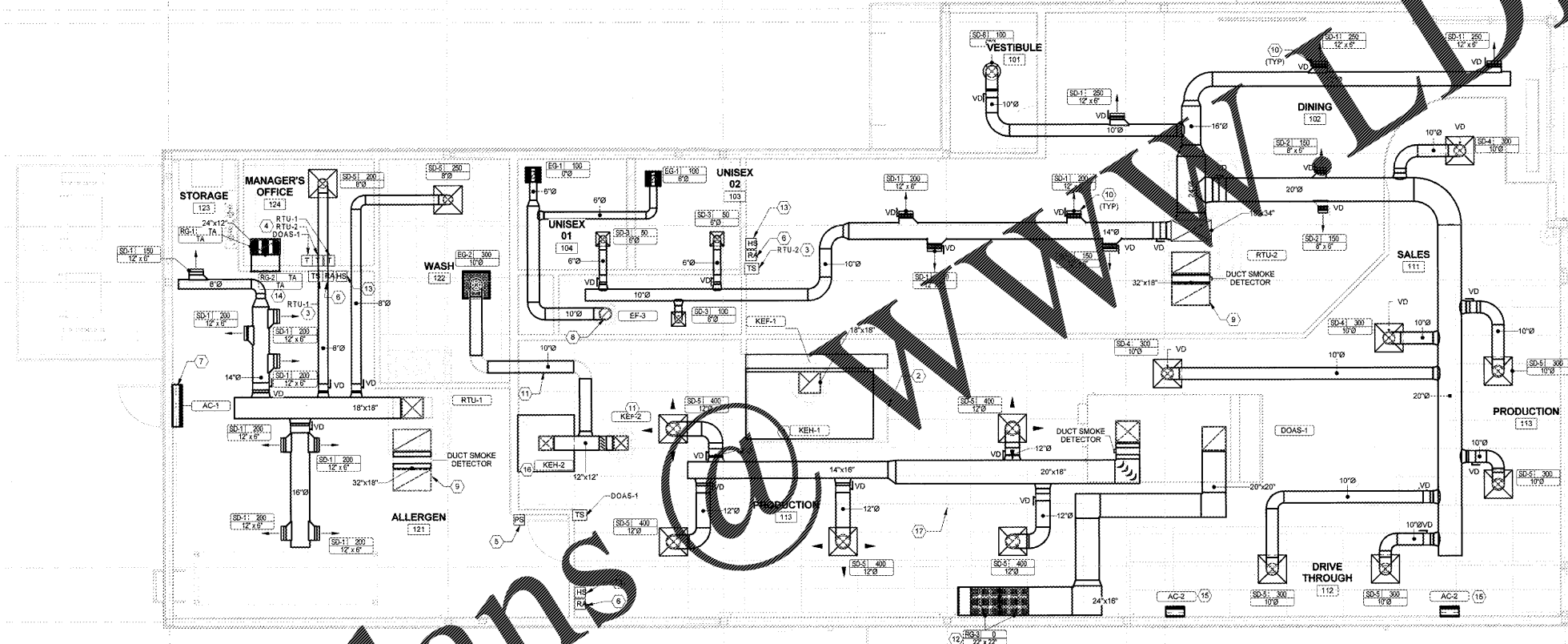


Order Plans



keynotes

- 1 PROVIDE TYPE 1 GREASE EXHAUST DUCT FROM KITCHEN EXHAUST HOOD TO KITCHEN EXHAUST FANS. TRANSITION GREASE DUCT AS REQUIRED TO CONNECT TO NEW EXHAUST FANS KEF-1 ON ROOF. PROVIDE CLEAN OUT AND INSPECTION ACCESS OPENINGS IN DUCT AS REQUIRED BY NFPA #98 AND LOCAL CODE REQUIREMENTS. PROVIDE FIRE WRAP ON ALL NEW GREASE DUCT TO REDUCE CLEARANCE TO COMBUSTIBLES TO 0'-0". SEE SHEET M101 FOR LOCATION OF KITCHEN EXHAUST FANS.
- 2 KITCHEN HOOD AND HOOD FIRE SUPPRESSION CABINET. REFER TO KITCHEN EQUIPMENT DRAWINGS FOR ADDITIONAL INFORMATION. HOOD REQUIRES FIRE ALARM CONNECTION INSTALLED BY FIRE ALARM CONTRACTOR. COORDINATE EQUIPMENT FIRE PROTECTION REQUIREMENTS WITH THE RESPECTIVE CONTRACTORS PRIOR TO INSTALLATION.
- 3 LOCATE SENSORS FOR ROOFTOP UNITS WHERE INDICATED. AT 48" ABOVE FINISHED FLOOR. DO NOT INSTALL SENSORS ON EXTERIOR WALLS. LABEL SENSOR ACCORDINGLY.
- 4 MOUNT 7 DAY PROGRAMMABLE THERMOSTATS FOR ROOFTOP UNITS #1 AND #2 IN MANAGER'S OFFICE AT 48" ABOVE FINISHED FLOOR. PROVIDE CONTROL WIRING AS REQUIRED FOR SENSOR OPERATION. DO NOT INSTALL THE THERMOSTATS ON EXTERIOR WALLS. LABEL THERMOSTATS ACCORDINGLY.
- 5 SUGGESTED LOCATION FOR INSTALLATION OF HOOD FIRE SUPPRESSION MANUAL PULL STATION. COORDINATE EXACT LOCATION AND REQUIREMENTS WITH FIRE MARSHAL AND LOCAL CODE REQUIREMENTS.
- 6 PROVIDE REMOTE ANNUNCIATOR AND SMOKE DETECTOR TEST/RESET STATION AT APPROXIMATELY 48" ABOVE FLOOR.
- 7 PROVIDE AIR CURTAIN MOUNTED ABOVE DRIVE THROUGH. PROVIDE WITH DOOR SWITCH AIR CURTAIN TO OPERATE CONTINUOUSLY WHEN DOOR IS OPEN.
- 8 10" RESTROOM EXHAUST DUCT ROUTE TO EF-3 ON ROOF.
- 9 FINALLY INSTALLED RETURN DUCTWORK ROUTED TIGHT TO EXHAUST FANS. DUCTWORK TO BE WITH 90 DEG ELBOW AND PROVIDE 1" X 1" SLOPED DRAIN OPENING.
- 10 MOUNT TRANSFER DEVICES TO CENTER LINE OF DUCT AND ADJUST DEFLECTOR TO DISCHARGE AT 22.5 DEG ANGLE FROM HORIZONTAL TOWARD EXHAUST FAN OR ADJUST AS NECESSARY TO PREVENT DRAFTS.
- 11 PROVIDE LEAK TIGHT ALUMINUM DUCTWORK FOR ALL TYPE 2 DUCT SERVING REST AREA AND KEH-2.
- 12 RETURN GRILLES TO PROVIDE 100% RETURN AIR FROM SPACE BACK TO UNITS ONLY DURING UNOCCUPIED HOURS.
- 13 PROVIDE HUMIDITY SENSOR. INSTALL AT 60" AFF. PROVIDE ALL DEVICES, WIRING AND TERMINATIONS.
- 14 MOUNT TRANSFER AIR GRILLE AT 5'-6" AFF.
- 15 PROVIDE AIR CURTAIN MOUNTED ABOVE DRIVE THRU WINDOW. AIR CURTAIN TO OPERATE CONTINUOUSLY WHEN WINDOW IS OPEN.
- 16 PROVIDE TYPE II HEAT AND VAPOR EXHAUST HOOD AND DUCTWORK ABOVE NON-GREASE PRODUCING HEAT EQUIPMENT. REFER TO M700 SHEETS FOR CAPTIVE AIRE DRAWINGS.
- 17 APPROXIMATE LOCATION OF REFRIGERANT PIPES FOR COOLING TUNNEL EQUIPMENT PROVIDED BY KITCHEN EQUIPMENT CONTRACTOR. REFER TO DETAILS 2 AND 3 ON SHEET M401 FOR MORE INFORMATION.

architect + engineer



project no. | KRKDS0003

owner



project info

CONCORD
NORTH CAROLINA

issue dates

submission:	Date
OWNER/REVIEW	11/01/2018
BID SET	11/01/2018
PERMIT SET	11/01/2018

revisions:

#	Description	Date

seal



NOV 02 2018

sheet info

MECHANICAL
PLAN
M100