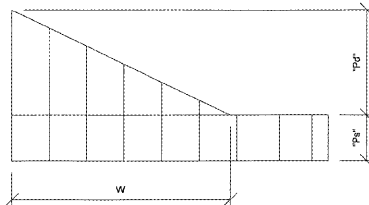


**02** 3d view roof framing (for reference only)



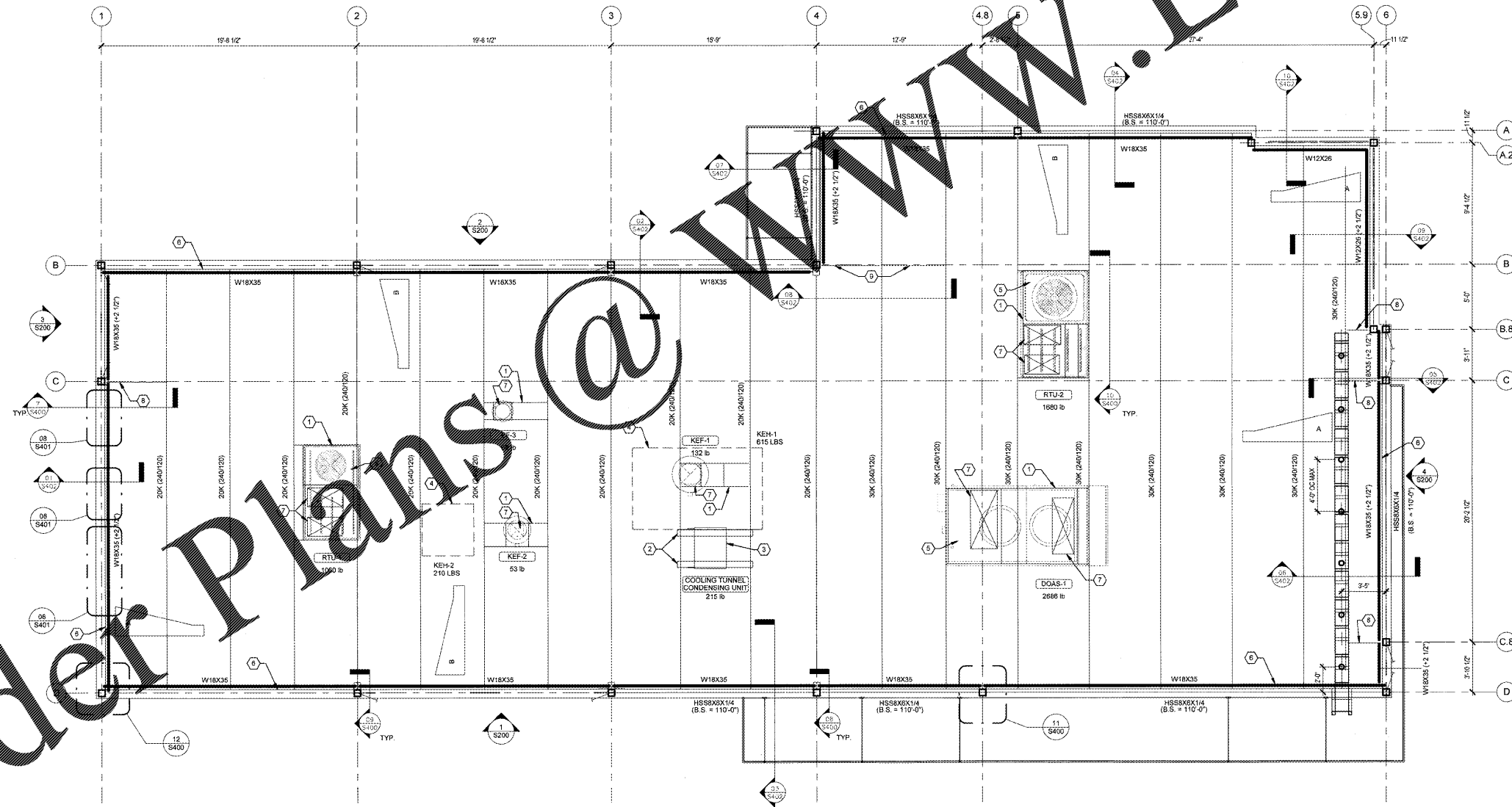
MARK	BALANCED SNOW LOAD (Ps) PSF	DRIFT SNOW (Pd) PSF	DRIFT WIDTH (W)
A	7.0	31.0	8'-2"
B	7.0	19.5	5'-2"

**03** roof snow drift schedule

- ROOF FRAMING PLAN NOTES:**
- REFER TO 5001 FOR GENERAL NOTES.
  - ANY CHANGES MADE TO THE DESIGN IDENTIFIED ON THESE DRAWINGS AND/OR ASSOCIATED SPECIFICATIONS SHALL BE SUBMITTED TO THE ENGINEER/ARCHITECT OF RECORD FOR REVIEW AND APPROVAL PRIOR TO MAKING ANY MODIFICATIONS TO THE PROJECT. ANY LIABILITY AS A RESULT OF DESIGN MODIFICATIONS, AS WELL AS ANY COSTS ASSOCIATED WITH SUCH MODIFICATIONS, MADE WITHOUT THE WRITTEN APPROVAL OF ENGINEER/ARCHITECT OF RECORD SHALL BECOME THE RESPONSIBILITY OF THE CONTRACTOR.
  - ROOF CONSTRUCTION: 1 1/2" x 20 GA WIDE RIB (TYPE B) GALVANIZED STEEL DECK, 3 SPIN MINIMUM FASTEN USING H&LTI X-HSN-24 PINS TO STEEL JOISTS AND H&LTI X-ENP-19 PINS TO STEEL BEAMS IN A 305 PATTERN. PROVIDE #10-16 SCREW SIDELAPS AT 24" O.C., U.N.O.
  - ALL ELEVATION REFERENCES ARE FROM TOP OF FLOOR SLAB ON GROUND (+0'-0").
  - STEEL JOIST DESIGNATIONS GIVE THE TOTAL DEPTH AND SERIES. UNIFORM LOADS DO NOT INCLUDE THE EFFECTS OF WIND PRESSURES. BOTH UPLIFT AND DOWNWARD PRESSURES SHALL BE ACCOUNTED FOR. THE JOIST MANUFACTURER SHALL DESIGN THE JOISTS FOR UNIFORM LOADS SHOWN IN GENERAL NOTES, AND FOR THE CONCENTRIC POINT LOADS PROVIDED ON THE DRAWINGS. SEE THE GENERAL NOTES ON SHEET 5001 FOR DESIGN WIND PRESSURES AND LOAD COMBINATIONS.
  - (+2 1/2) - INDICATES TOP OF STEEL ELEVATION RELATIVE TO SUPPORTING MEMBER.
  - PLACEMENT OF SPRINKLER CONTRACTOR BRIDGING AND STEEL CONTRACTOR BRIDGING SHALL BE AS SHOWN AND SHALL BE THE RESPONSIBILITY OF THE CONTRACTOR. MAKE PROVISIONS FOR THE STEEL ERECTOR TO ADJUST/RELOCATE BRIDGING OR SPRINKLER CONTRACTOR TO ADJUST OR RELOCATE SPRINKLER HEADS WHERE CONFLICTS OCCUR. ALL CHANGES TO THE JOIST BRIDGING SHALL BE DESIGNED BY THE CONTRACTOR. JOIST BRIDGING SHALL NOT BE USED TO SUPPORT SPRINKLER HEADS. ALL SPRINKLER PIPES CONNECTIONS SHALL BE CONCENTRIC TO THE JOISTS OR WITH TRAPICE CONNECTIONS.

**ROOF FRAMING PLAN KEY NOTES**

MARK	DESCRIPTION
1	MECHANICAL EQUIPMENT SUPPORT ADJUSTABLE FRAMING. REFER TO DETAIL S/5400.
2	MECHANICAL EQUIPMENT SUPPORT RAILS SPANNING BETWEEN JOISTS.
3	CONDENSER UNIT. HOLD-DOWN PER MANUF.
4	KITCHEN HOOD HUNG FROM JOISTS. REFER TO DETAIL D/45401 FOR SUPPORT FRAMING.
5	ROOF TOP EQUIPMENT. REFER TO DETAIL 4/5400 FOR CURB SUPPORT.
6	CONT. L3x3 1/2x1/4 LLH ALONG EDGE OF ROOF DECK. REFER TO DETAILS ON S/402 FOR DIMENSION FROM GRID.
7	ROOF DECK OPENING. SUPPORT WITH ADJUSTABLE FRAME. REFER TO DETAILS S/5400 AND S/5400.
8	L3x3x1/4 BRACE AT COLUMN TIGHT UNDER DECK. REFER TO DETAIL 08/5400.
9	NOTCHED CONT. L3x3x1/4 CHORD TIGHT UNDER DECK. REFER TO DETAIL 08/5402.



**01** roof framing plan  
SCALE | 1/4" = 1'-0"



submission:	Date
OWNER/ALL REVIEW	11/01/2018
BID SET	11/01/2018
PERMIT SET	11/01/2018

#	Description	Date
1	Description	Date

