



submission:	Date
OWNER/ALL REVIEW	11/01/2018
BID SET	11/01/2018
PERMIT SET	11/01/2018

#	Description	Date



- FOUNDATION PLAN NOTES:**
- REFER TO S001 FOR GENERAL NOTES.
 - ANY CHANGES MADE TO THE DESIGN IDENTIFIED ON THESE DRAWINGS AND/OR ASSOCIATED SPECIFICATIONS SHALL BE SUBMITTED TO THE ENGINEER/ARCHITECT OF RECORD FOR REVIEW AND APPROVAL PRIOR TO MAKING ANY MODIFICATIONS TO THE PROJECT. ANY LIABILITY AS A RESULT OF DESIGN MODIFICATIONS, AS WELL AS ANY COSTS ASSOCIATED WITH SUCH MODIFICATIONS, MADE WITHOUT THE WRITTEN APPROVAL OF ENGINEER/ARCHITECT OF RECORD SHALL BECOME THE RESPONSIBILITY OF THE CONTRACTOR.
 - ALL ELEVATION REFERENCES ARE FROM TOP OF SLAB AROUND PERIMETER (+0.0).
 - SLAB ON GROUND CONSTRUCTION: 4" THICK CONCRETE SLAB ON GROUND WITH 6#5 W/ 4#W4 (SHARED) AT 12" INCH CLEAR FROM TOP OF SLAB. SEE 03S300. SEE PLAN FOR ADDITIONAL INFORMATION.
 - REFER TO SCHEDULE THIS SHEET FOR MINIMUM OVERALL AND LOCAL FLOOR FLATNESS AND LEVELNESS. REFER TO GENERAL NOTES.
 - REFER TO ARCHITECTURAL DRAWINGS FOR SLOPING OF INTERIOR SLABS AROUND DRAINS. REFER TO CIVIL DRAWINGS FOR EXTERIOR ELEVATION AND SLOPING OF EXTERIOR SLABS, AS WELL AS FOR FINISH SLABS ON GROUND.
 - #F - INDICATES COLUMN FOOTING TYPE, TOP OF FOOTING ELEVATION INDICATED ON PLAN. REFER TO FOOTING SCHEDULE FOR SIZE AND REINFORCING.
 - C# - INDICATES COLUMN TYPE. REFER TO COLUMN SCHEDULE FOR SIZE AND BASE PLATE TYPE.
 - CJ - INDICATES SLAB ON GROUND EARLY-ENTRY CONTROL JOINTS. REFER TO DETAIL 03S300.
 - REFER TO DETAIL 06S300 FOR PIPES UNDER FOOTINGS.
 - REFER TO SHEET S300 FOR TYPICAL FOOTING AND SLAB ON GROUND DETAILS.

FOUNDATION PLAN KEY NOTES

MARK	DESCRIPTION
1	BUILDING FINISH: CONCRETE SLAB ON GROUND OVER 10 MILS VAPOR BARRIER AND 4" COMPACTED GRANULAR FILL.
2	ORDINARY FINISHES WITH ARCH DRAWINGS. MAINTAIN MINIMUM SLAB THICKNESS AS SHOWN ON PLAN. SEE DETAIL 03S300.
3	SLAB ON GROUND EARLY-ENTRY CONTROL JOINTS. SEE TO DETAIL 03S300 AND BASIS300.
4	COLUMN FOOTING INTEGRAL WITH WALL FOOTINGS.
5	12#4 BARS AT MID-DEPTH OF SLAB AT DISCONTINUOUS JOINTS AND RE-ENTRANT CORNERS. REFER TO DETAIL 04S300.
6	AT DOORS, TOP OF STEM WALL IS 8" LOWER TO ALLOW SLAB ON GROUND OVER. REFER TO DETAIL 10S300.
7	WALK-IN COOLER SLAB: 4" CONCRETE SLAB ON GROUND OVER 10 MILS VAPOR BARRIER OVER RIGID INSULATION OVER COMPACTED GRANULAR FILL. MAINTAIN MINIMUM SLAB THICKNESS AS SHOWN ON PLAN. SEE DETAIL 03S300.
8	2'-6" WIDE STEM WALL BLOCKOUT AT COLUMNS. TYP. CAN BE REDUCED FOR SMALLER BASE PLATES.
9	COAT BASE PLATE AND ANCHOR RODS WITH ASPHALTIC PAINT (2 COATS MIN). TYP.

FOOTING SCHEDULE

MARK	FOOTING SIZE (WxLxD)	REINFORCING	TOP ELEVATION
F4.0	4'-0"x4'-0"x1'-0"	(4)9#5 E.W. BOTTOM	-1'-6"
F5.0	5'-0"x5'-0"x2'-0"	(5)9#5 E.W. TOP & BOTTOM	-1'-6"
F7.0	7'-0"x18'-0"x2'-0"	(12)#5 L.W. T&B #5@12" O.C. S.W. T&B	-1'-6"
F7.1	7'-0"x11'-0"x2'-0"	(12)#5 L.W. T&B #5@12" O.C. S.W. T&B	-1'-6"
WF2.0	2'-0"x1'-0" CONT.	(2)#5 CONT.	-1'-6"

- NOTES:**
- TOP OF PERIMETER WALL FOOTINGS AND SPREAD FOOTINGS ELEVATION -1'-6" UNLESS NOTED OTHERWISE.
 - CONTINUE WALL FOOTING REINFORCEMENT THRU COLUMN FOOTINGS.
 - FOOTINGS CENTERED UNDER COLUMNS OR WALL UNLESS NOTED OTHERWISE.

SLAB FLATNESS/LEVELNESS

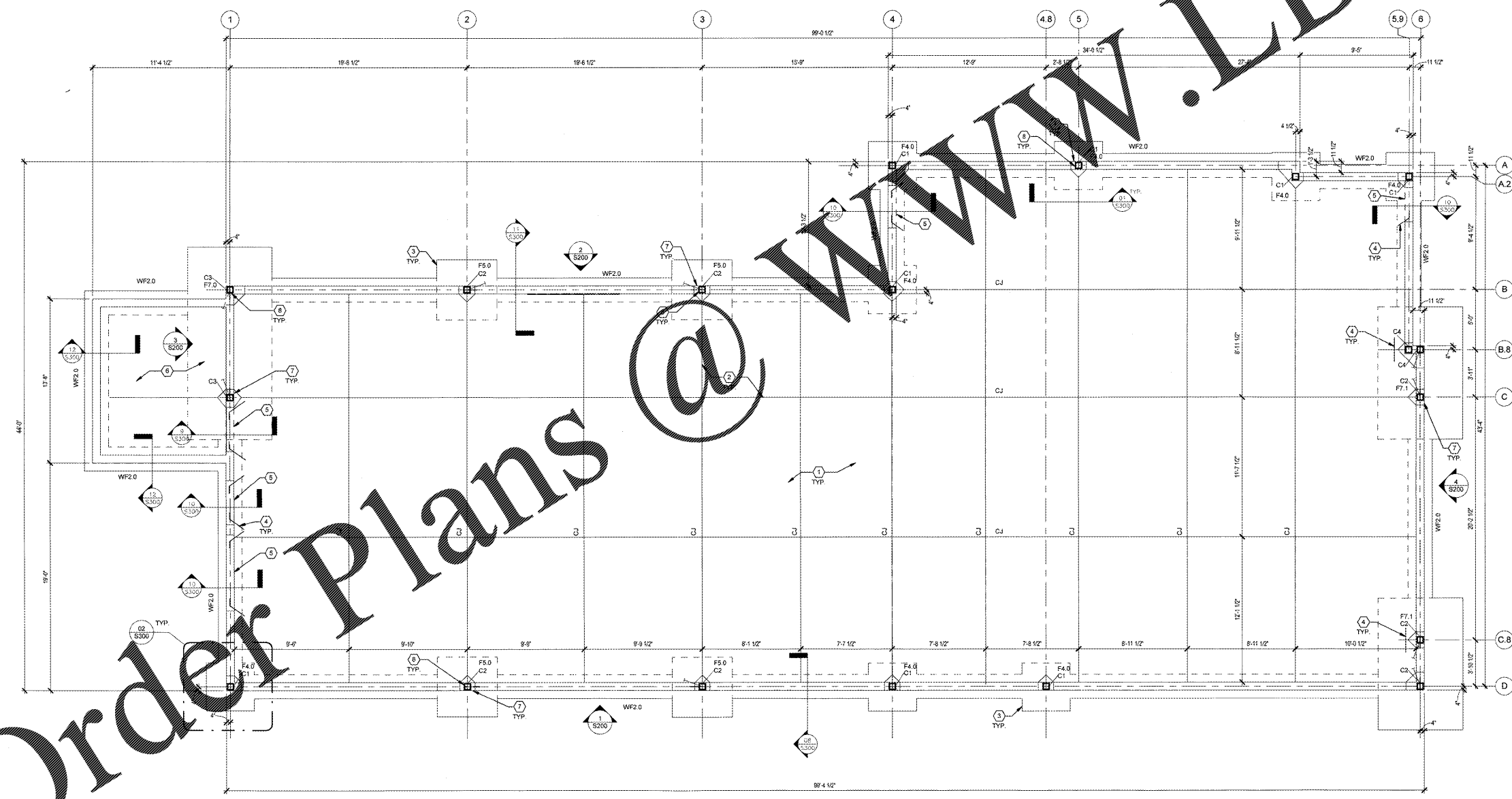
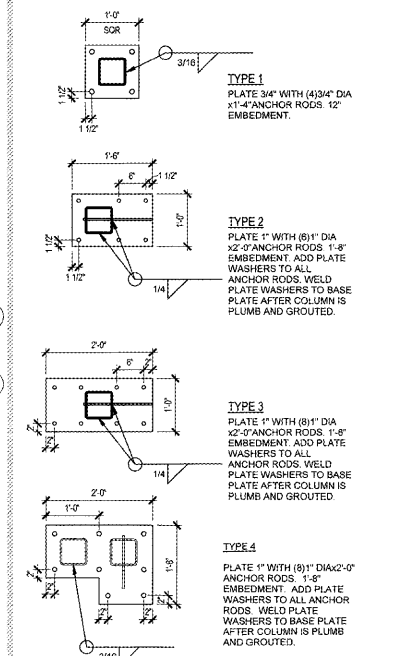
OVERALL		LOCAL	
FF	FL	FF	FL
75	50	45	30

REFER TO GENERAL NOTES ON S001.

S-COLUMN SCHEDULE

MARK	COLUMN SIZE	BASE PLATE
C1	HSS6X6X3/8	TYPE 1
C2	HSS6X6X3/8	TYPE 2
C3	HSS6X6X3/8	TYPE 3
C4	HSS6X6X3/8	TYPE 4

- NOTES:**
- CAP PLATE 1/2" AT ALL COLUMNS.
 - ANCHOR RODS SHALL HAVE 4" PROJECTIONS.
 - SEE BELOW FOR BASE PLATE TYPES AND ANCHOR RODS.



01 foundation plan
SCALE | 1/4" = 1'-0"