



submission:	Date:
OWNER/LL REVIEW	11/01/2018
BID SET	11/01/2018
PERMIT SET	11/01/2018

#	Description	Date
---	-------------	------



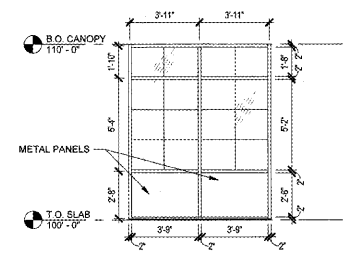
NOV 02 2018

storefront notes

SCALE | 1/4" = 1'-0"

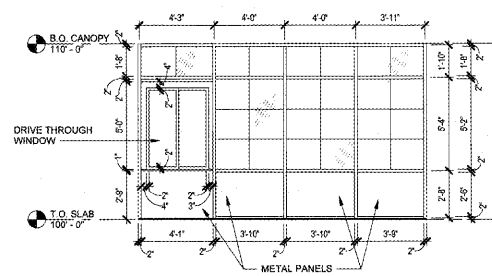
- DIMENSIONS SHOWN FOR ALL WINDOW TYPES ARE TO BE FIELD VERIFIED PRIOR TO FABRICATION OR INSTALLATION.
- PRODUCT SUBSTITUTIONS ALLOWED PENDING TENANT AND LOCAL JURISDICTION APPROVAL.
- GLAZING
 - N/A
 - PROVIDE TEMPERED GLASS AS REQUIRED BY CODE.
 - PROVIDE SAMPLES TO TENANT FOR FINAL SELECTION.
 - PROVIDE SOLARBAN 90 GLAZING AT ALL EXTERIOR STOREFRONT LOCATIONS.
- ALL CONDITIONS HAVE NOT BEEN DETAILED. PROVIDE ALL SEALANTS, FLASHING AND ACCESSORIES AS REQUIRED TO PROVIDE COMPLETE WEATHER TIGHT INSTALLATION OF ALL PRODUCTS AS RECOMMENDED BY THE MANUFACTURER.
- ALUMINUM STOREFRONT SYSTEM ANODIZED ALUMINUM FINISH. FRONT GLAZED 14-1/2" DEEP w/ 2" SIGHTLINE. POWDERCOATED ALL STOREFRONT ALUMINUM TO MATCH GREEN TO MATCH PMS 349C. VENDOR TO COORDINATE WITH CONSTRUCTION MANAGER AND DESIGN MANGER FOR FINAL APPROVAL.
- PER IBC SECTION 1715.5.1, EXTERIOR WINDOWS AND DOORS SHALL BE LABELED AS CONFORMING TO AMMANWDA 1011.8.2 OR 1011.8.2(MAFS). THE LABEL SHALL STATE THE NAME OF THE MANUFACTURER, THE APPROVED LABELING AGENCY AND THE PRODUCT DESIGNATION.
- INSTALL MUNTIN GRIDS TO INSIDE AND OUTSIDE FACE OF GLASS.

GENERAL NOTE: G.C. TP FIELD MEASURE FOR GLAZING.



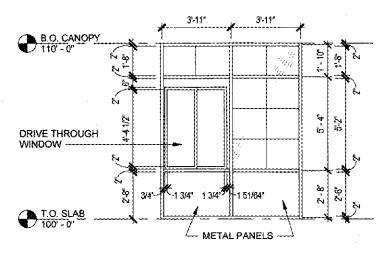
01 storefront - A
SCALE | 1/4" = 1'-0"

NOTE: ALL DIMENSIONS ARE FINISH DIMENSIONS, U.N.O.



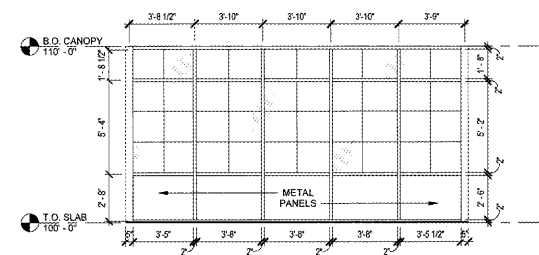
02 storefront - B
SCALE | 1/4" = 1'-0"

NOTE: ALL DIMENSIONS ARE FINISH DIMENSIONS, U.N.O.



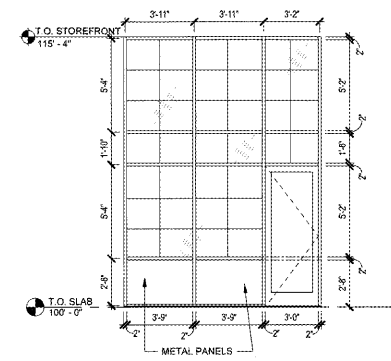
03 storefront - C
SCALE | 1/4" = 1'-0"

NOTE: ALL DIMENSIONS ARE FINISH DIMENSIONS, U.N.O.



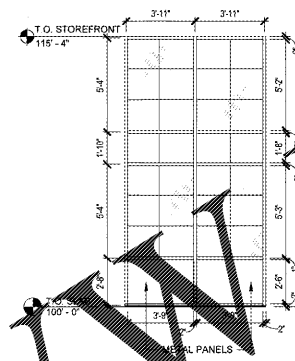
04 storefront - D
SCALE | 1/4" = 1'-0"

NOTE: ALL DIMENSIONS ARE FINISH DIMENSIONS, U.N.O.



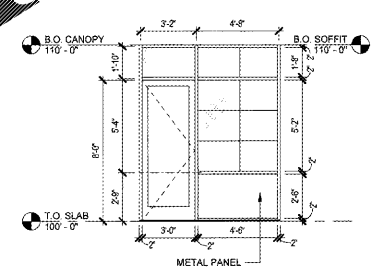
05 storefront - E
SCALE | 1/4" = 1'-0"

NOTE: ALL DIMENSIONS ARE FINISH DIMENSIONS, U.N.O.



06 storefront - F
SCALE | 1/4" = 1'-0"

NOTE: ALL DIMENSIONS ARE FINISH DIMENSIONS, U.N.O.



07 storefront - G
SCALE | 1/4" = 1'-0"

NOTE: ALL DIMENSIONS ARE FINISH DIMENSIONS, U.N.O.

Order Plans @ WWW.WLDILine.com