

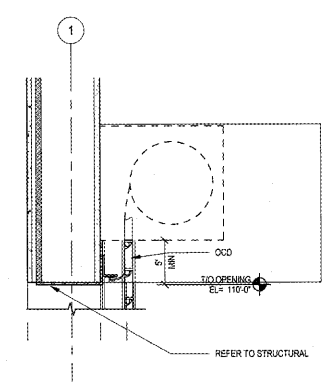


submission:	Date
OWNER REVIEW	11/01/2018
BID SET	11/01/2018
PERMIT SET	11/01/2018

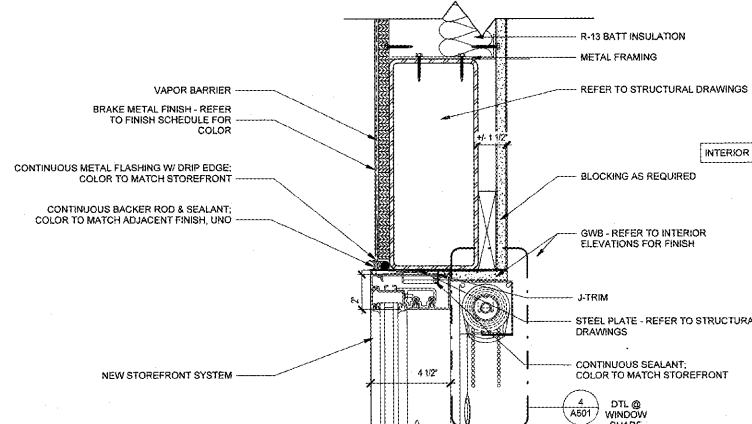
#	Description	Date



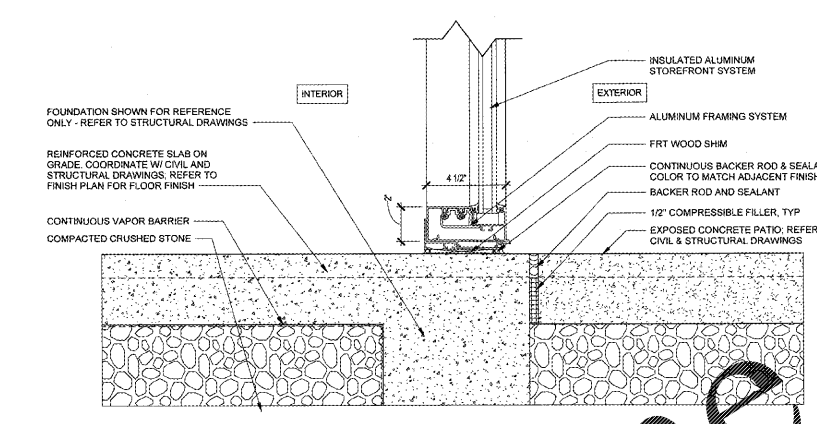
NOV 02 2019



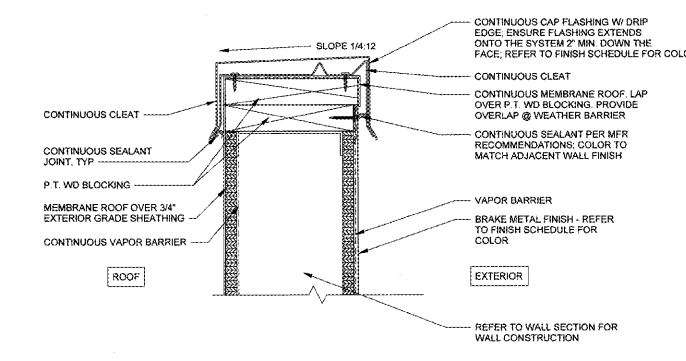
16 HEAD @ OVERHEAD COILING DOOR
SCALE | 1 1/2" = 1'-0"



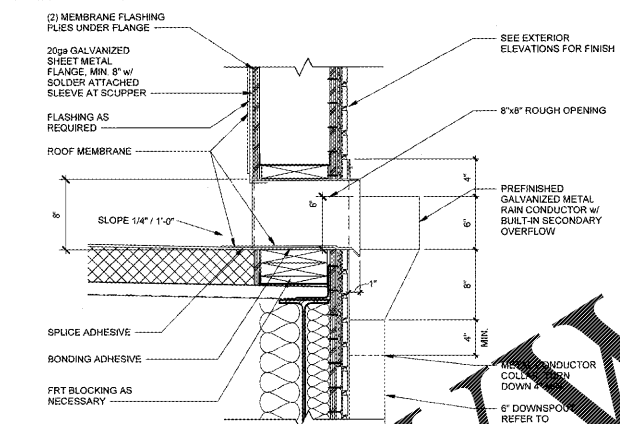
15 header @ curtain wall & brake metal
SCALE | 3" = 1'-0"



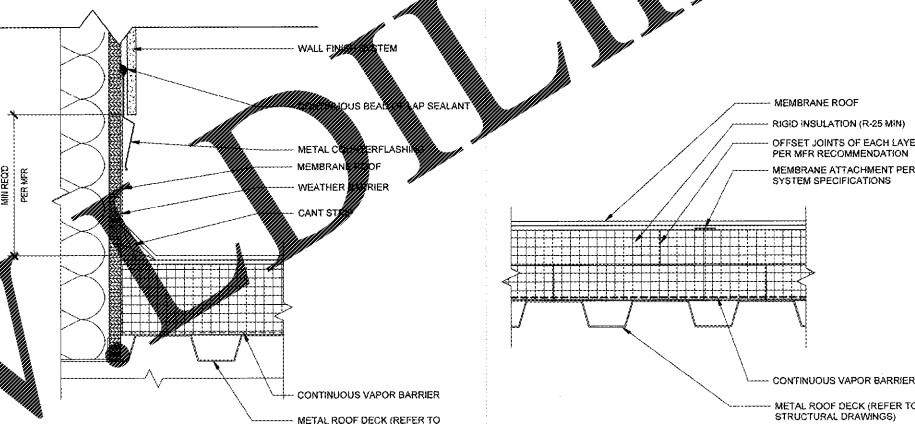
14 base @ curtain wall
SCALE | 3" = 1'-0"



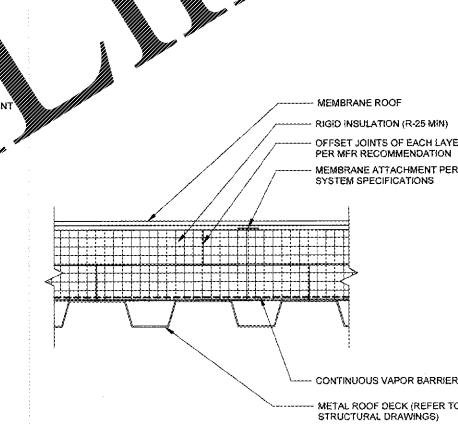
13 parapet cap @ brake metal wall
SCALE | 3" = 1'-0"



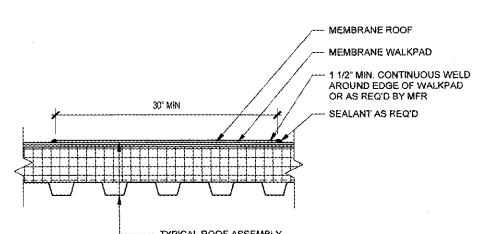
12 roof scupper
SCALE | 1 1/2" = 1'-0"



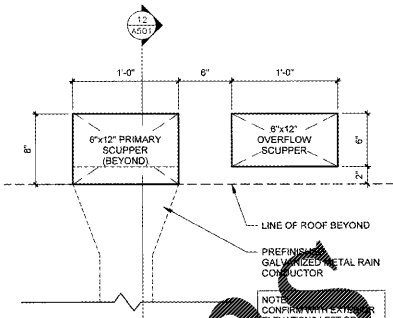
11 base flashing
SCALE | 3" = 1'-0"



10 roof assembly
SCALE | 3" = 1'-0"



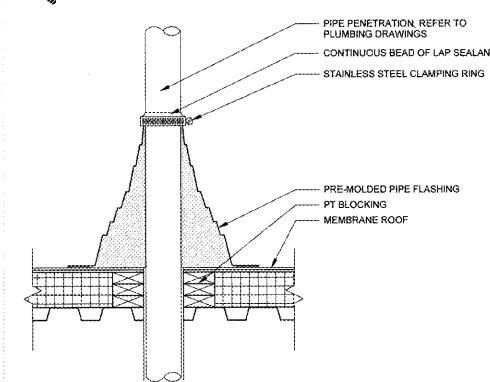
09 walkpad
SCALE | 1 1/2" = 1'-0"



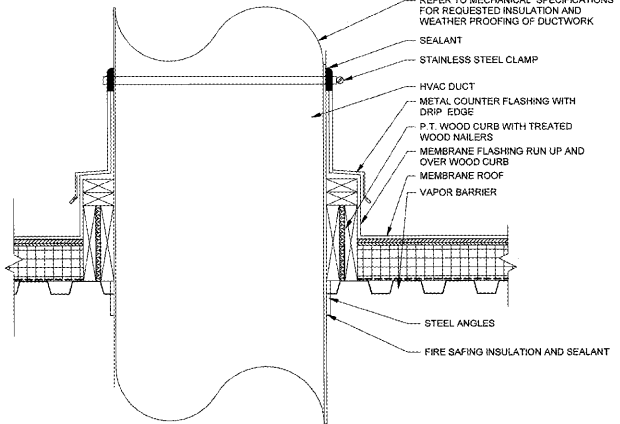
08 roof scupper and overflow
SCALE | 1 1/2" = 1'-0"



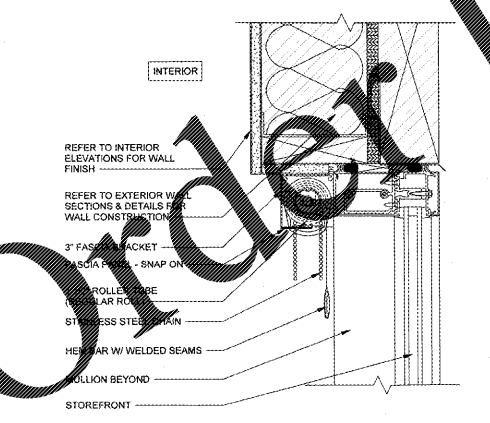
07 NOT USED
SCALE | 1 1/2" = 1'-0"



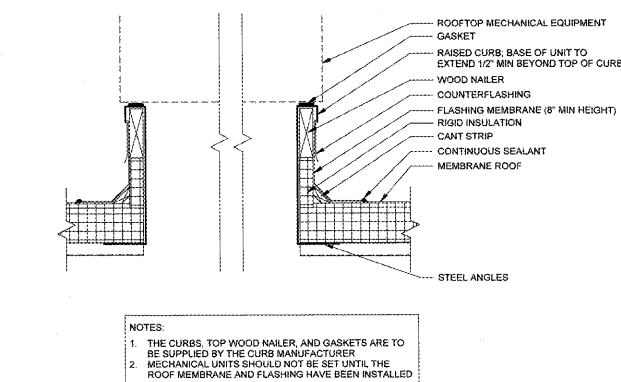
06 vent pipe
SCALE | 1 1/2" = 1'-0"



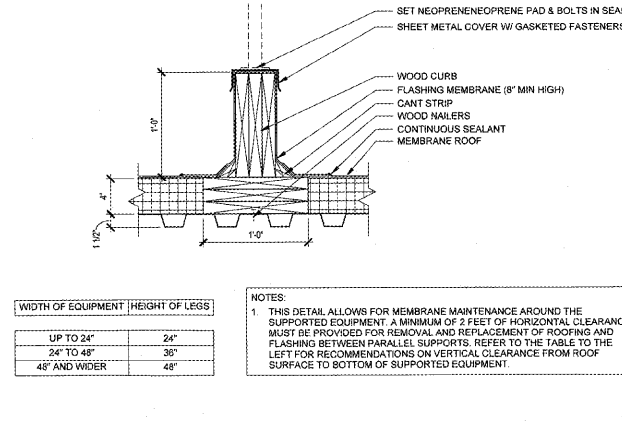
05 duct penetration @ roof
SCALE | 1 1/2" = 1'-0"



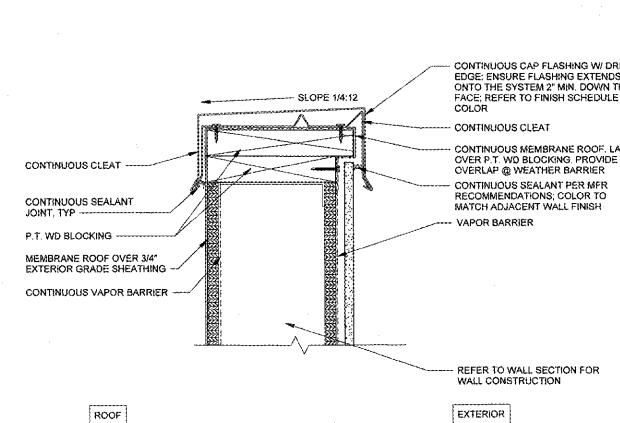
4 window shades
SCALE | 3" = 1'-0"



03 typical equipment curb
SCALE | 1 1/2" = 1'-0"



02 equipment curb @ condensers
SCALE | 1 1/2" = 1'-0"



01 parapet cap @ hardie panel wall
SCALE | 3" = 1'-0"