

general notes

- A. ALL TARGET ELEVATIONS ARE TAKEN IN RELATION TO PROJECT +1'-0"
- B. G.C. SHALL PROVIDE ALL BLOCKING AND BACKING FOR ALL SIGNAGE AND/OR AWNING ATTACHMENTS.
- C. REFER TO FINISH SCHEDULE FOR ALL FINISHES.
- D. FINISH PATTERN SHOWN FOR REPRESENTATIONAL PURPOSES ONLY - REFER TO FINISH SCHEDULE FOR EXACT SIZING.
- E. AT ALL TILE TRANSITIONS (EDGES, CORNERS, ETC.) WHERE APPLICABLE PROVIDE STAINLESS STEEL SCHLUTER TRIM PIECE & ACCESSORIES, U.N.D.
- F. PROVIDE 5/8" CEMENT BOARD BACKING AT ALL WALL TILE LOCATIONS, U.N.D.
- G. AT ALL BACK OF HOUSE/STORAGE WALLS, PAINT TO BE BREATHABLE EPOXY BASED PAINT TO PROVIDE WIPEABLE SEALED SURFACE.

keynotes

- 1. BOLLARD - REFER TO DETAIL XXXXX.
- 2. WALL MOUNTED EXTINGUISHERS, SEE EGRESS PLAN.
- 3. OVERHEAD COILING DOOR, REFER TO DOOR & HARDWARE SCHEDULE.
- 4. EMPLOYEE TABLE & CHAIRS, REFER TO FURNITURE & EQUIP PLAN.
- 5. CONTINUOUS STAINLESS STEEL CONER GUARDS PROVIDED & INSTALLED BY G.C. - SEE DETAIL XXXXX.
- 6. PAINT (PT-01) ALL CNB ABOVE STOREFRONT/WALL CLADDING, EXPOSED STRUCTURE, AND DUCTWORK.
- 7. P.O.S. STATION, G.C. TO PROVIDE POWER, DATA & BLOCKING AS REQUIRED (EQUIPMENT SHALL BE SHROUDED), VERIFY FINAL LOCATION W/ OWNER PRIOR TO INSTALLATION.
- 8. TRACK LIGHT MOUNTED TO SUSPENDED UNISTRUT - BO. OF UNISTRUT SHALL BE INSTALLED AT 10'-0" FROM CEILING. REFER TO ELECTRICAL DWG.
- 9. NEW STOREFRONT SYSTEM, REFER TO ARCHITECTURE TRIFAB 4511 WITH 1" TEMPERED INSULATING GLASS.
- 10. TRASH BINS BY K.E.C.
- 11. NOT USED.
- 12. PROVIDE STAINLESS STEEL EXTINGUISHER CABINET, SEE SHEET A001 FOR FIRE EXTINGUISHER TYP. NOTES AND SPECS.
- 13. AUTOMATIC FIRE EXTINGUISHER STATION, PROVIDE POWER, DATA & BLOCKING AS REQUIRED, EQUIPMENT SHALL BE SHROUDED, VERIFY FINAL LOCATION W/ OWNER PRIOR TO INSTALLATION.
- 14. MENU BOARD TYP. EXPOSED LOCATIONS TO BE COORDINATED W/ OWNER. EXPOSED PAINTED WORK - PAINTED PT-05 TYP.
- 15. CURVED SMOKE TO BE PAINTED PT-01, TYP.
- 16. PAINTED METAL FRAME WALL, SEE FINISH PLAN.
- 17. AREA OF ACTING ABOVE ALLERGEN AREA.
- 18. FLOORWORK TO BE PTD TO MATCH CEILING TYP.
- 19. NOT USED.
- 20. NOT USED.
- 21. INTERIOR ALUM STOREFRONT PORTHOLE WINDOWS.
- 22. DIVIDER PANEL, SEE PLAN FOR ADDITIONAL INFORMATION.
- 23. ASP-2 STAINLESS STEEL LEDE TO BE PROVIDED AT INTERIOR STOREFRONT AND DRIVE THROUGH SIDES TYP.
- 24. NOT USED.
- 25. DOUGHNUT PRODUCTION LINE EQUIPMENT SHOWN HALFTONE DASHED TYP. SEE FOOD SERVICE DWGS.
- 26. FRP PANEL DIVISIONS SHOWN DASHED TYP.
- 27. AREA OF CUSTOM WALL GRAPHIC BY OWNER SHOWN SHADED.
- 28. MILLWORK GLAZING COUNTER & STEP.
- 29. OWNER PROVIDED MILLWORK.
- 30. NOT USED.
- 31. NOT USED.
- 32. AREA OF OWNER DISPLAY INSTALLATION SHOWN DASHED. PROVIDE FULL SHEET BACKING.
- 33. SIGNAGE BY OWNER VENDOR SHOWN DASHED.
- 34. 45" DIGITAL DISPLAY, FINAL MODEL TO BE COORDINATED WITH OWNER.
- 35. FRP W/ EPS BEHIND FOOD SERVICE EQUIPMENT TYP.
- 36. MILLWORK & CUSTOM FIXTURE SHOWN DASHED SEE DETAILS & EQUIPMENT PLAN.
- 37. CUSTOM FIXTURE SHOWN DASHED, SEE EQUIP PLAN.
- 38. DOUGHNUT PRODUCTION LINE EQUIPMENT SHOWN HALFTONE DASHED TYP. SEE FOOD SERVICE DWGS.
- 39. FOOD SERVICE EQUIPMENT, SEE FS DRAWINGS.
- 40. FREEZER COOLER, SEE FS DRAWINGS.
- 41. EMERGENCY LIGHT, SEE ELECTRICAL DWGS.
- 42. LIGHT FIXTURE, SEE ELECTRICAL DWGS.
- 43. WATER HEATER, SEE PLUMBING DWGS.
- 44. TANKLESS WATER HEATER, SEE PLUMBING DWGS.
- 45. SNEEZE GUARD, SEE MILLWORK DWGS.
- 46. MECHANICAL EQUIPMENT, SEE MECHANICAL DWGS.

architect + engineer



brand : operations : build
 project no. | KRKN5002

OWNER



project info

CONCORD
 NORTH CAROLINA

issue dates

submission:	Date
OWNER/ALL REVIEW	11/01/2018
BID SET	11/01/2018
PERMIT SET	11/01/2018

revisions:

#	Description	Date

seal

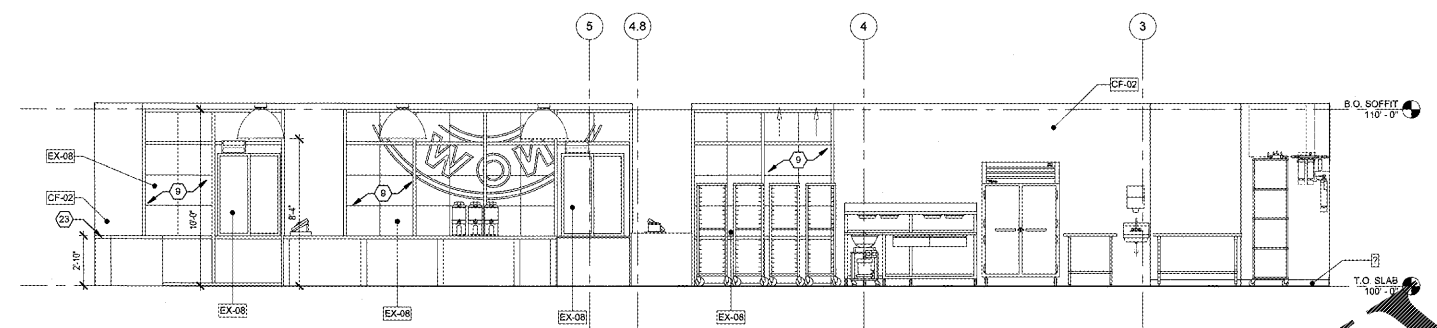


NOV 02 2018

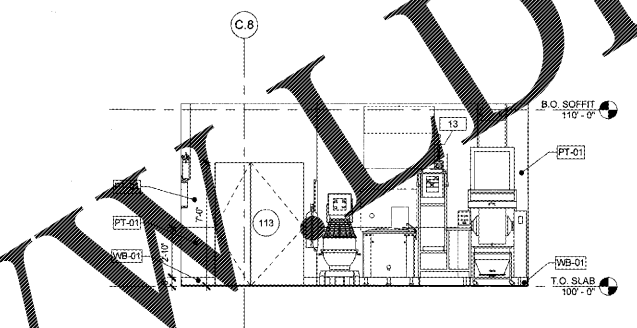
sheet info

INTERIOR ELEVATIONS

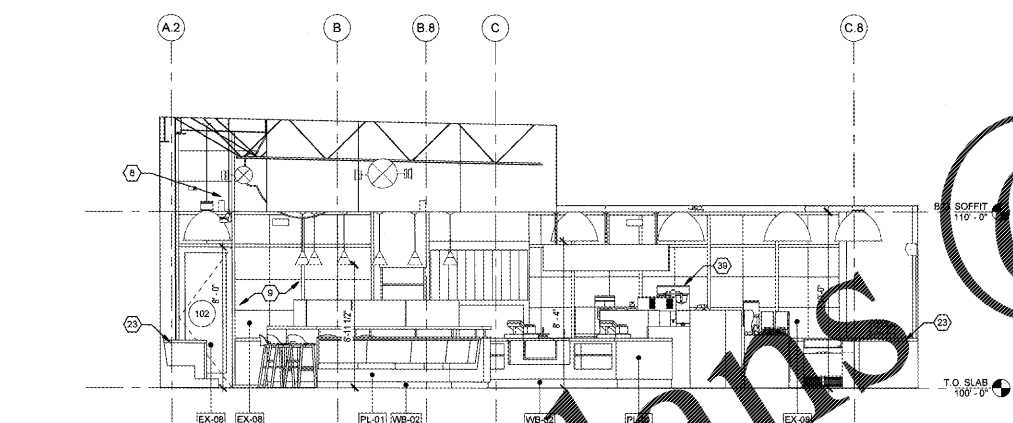
A211



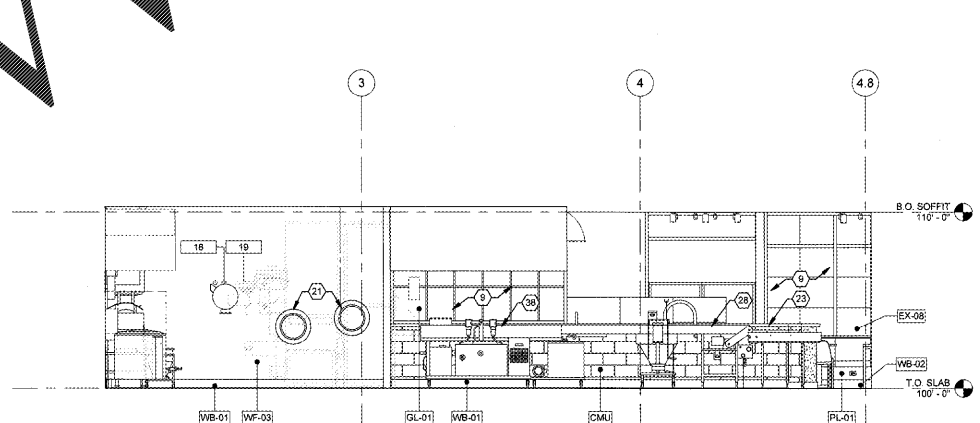
07 interior elevation - production
 SCALE | 1/4" = 1'-0"



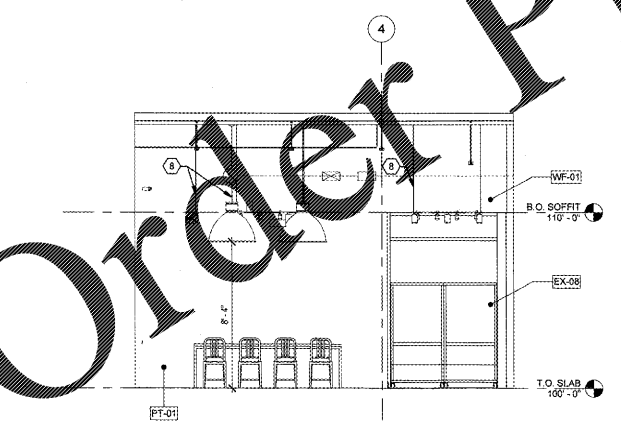
08 interior elevation - production
 SCALE | 1/4" = 1'-0"



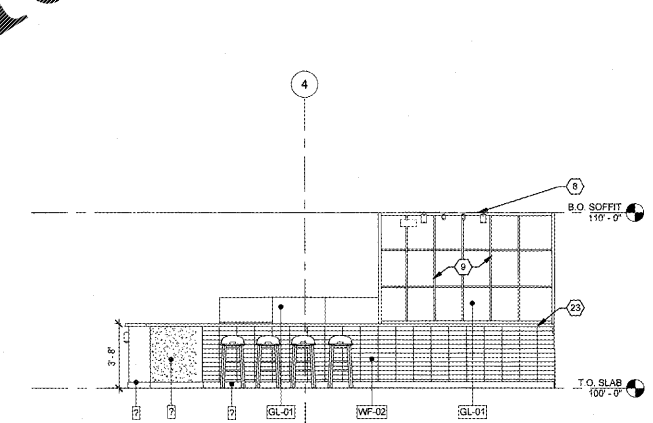
05 interior elevation - sales
 SCALE | 1/4" = 1'-0"



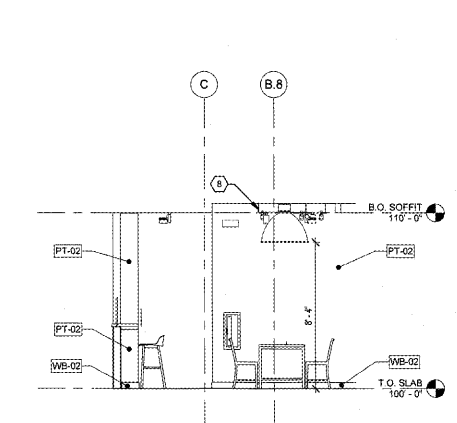
06 interior elevation - production
 SCALE | 1/4" = 1'-0"



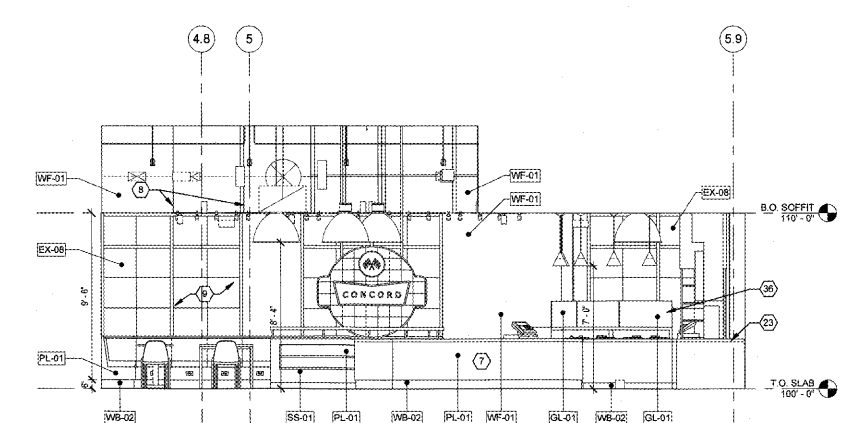
01 interior elevation - dining
 SCALE | 1/4" = 1'-0"



02 interior elevation - dining
 SCALE | 1/4" = 1'-0"



03 interior elevation - dining
 SCALE | 1/4" = 1'-0"



04 interior elevation - dining
 SCALE | 1/4" = 1'-0"

Order Plans @ WWW.DI.LINE.COM