



submission:	Date
OWNER/LL REVIEW	11/01/2018
BID SET	11/01/2018
PERMIT SET	11/01/2018

revisions:	Date
# Description	

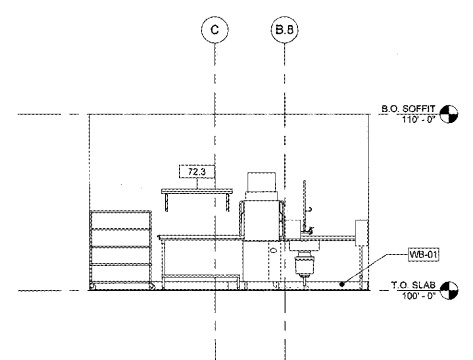


general notes

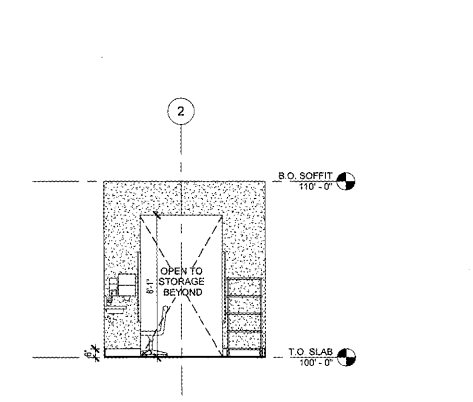
- A. ALL TARGET ELEVATIONS ARE TAKEN IN RELATION TO PROJECT +1.0'-0".
- B. G.C. SHALL PROVIDE ALL BLOCKING AND BACKING FOR ALL SIGNAGE AND/OR AWNING ATTACHMENTS.
- C. REFER TO FINISH SCHEDULE FOR ALL FINISHES.
- D. FINISH PATTERN SHOWN FOR REPRESENTATIONAL PURPOSES ONLY - REFER TO FINISH SCHEDULE FOR EXACT SIZING.
- E. AT ALL TILE TRANSITIONS (EDGES, CORNERS, ETC.) WHERE APPLICABLE PROVIDE STAINLESS STEEL SCHLUTER TRIM PIECE & ACCESSORIES, U.N.O.
- F. PROVIDE 5/8" CEMENT BOARD BACKING AT ALL WALL TILE LOCATIONS, U.N.O.
- G. AT ALL BACK OF HOUSE STORAGE WALLS, PAINT TO BE BREATHABLE EPOXY BASED PAINT TO PROVIDE WIPEABLE SEALED SURFACE.

keynotes

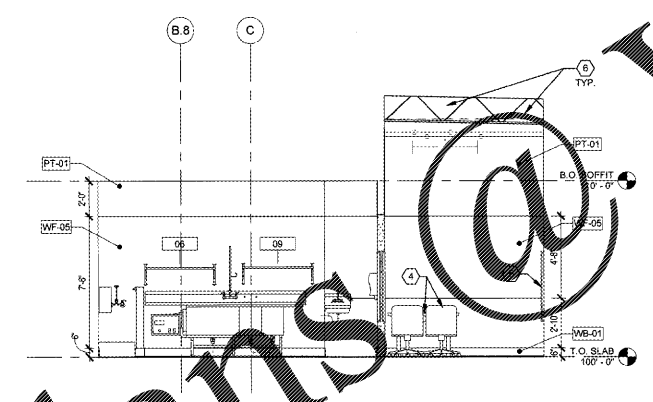
- 1 BOLLARD - REFER TO DETAIL XXXX.
- 2 WALL MOUNTED EXTINGUISHERS, SEE EGRESS PLAN.
- 3 OVERHEAD COILING DOOR, REFER TO DOOR & HARDWARE SCHEDULE.
- 4 EMPLOYEE TABLE & CHAIRS, REFER TO FURNITURE & EQUIP PLAN.
- 5 CONTINUOUS STAINLESS STEEL CORNER GUARDS PROVIDED AS CALLED BY G.C. - SEE DETAIL XXXX.
- 6 PAINT (PT-01) ALL GWB ABOVE STOREFRONT/WALL GLAZING, ALL EXPOSED STRUCTURE, AND DUCTWORK.
- 7 P.O. & STATION, G.C. TO PROVIDE POWER, DATA & BLOWING AS REQUIRED (EQUIPMENT SHALL BE SHROUDED), VERIFY FINAL LOCATION W/ OWNER PRIOR TO INSTALLATION.
- 8 TRACK LIGHT MOUNTED TO SUSPENDED UNISTRUT - 50" MAX. LIGHT SPACING SHALL BE INSTALLED AT 10'.
- 9 NEW STOREFRONT SYSTEM BY G.C. ENGINEER TRIFAB 4517 BRONZE WITH 1" TEMPERED INSULATING GLASS.
- 10 TRASH BINS BY K.E.C.
- 11 NOT USED.
- 12 PROVIDE EXTINGUISHER CABINET - SEE SHEET A001 FOR FINISH SCHEDULE TYP. SPECIES.
- 13 AWNING ORDER STAT. PROVIDE POWER, DATA & BLOWING AS REQUIRED (EQUIPMENT SHALL BE SHROUDED), VERIFY FINAL LOCATION W/ OWNER PRIOR TO INSTALLATION.
- 14 MENU BOARD TYP. EXACT SPECIFICATIONS TO BE COORDINATED W/ OWNER. EXPOSED DUCTWORK TO BE PAINTED PT-05 TYP.
- 15 CURVED SIGNAGE TO BE PAINTED PT-01, TYP.
- 17 PAINTED METAL FRAME WALL, SEE FINISH PLAN.
- 18 AREA OF ADJ. CEILING ABOVE ALLERGEN AREA.
- 19 DUCTWORK TO BE PTD TO MATCH CEILING TYP.
- 20 NOT USED.
- 21 INTERIOR ALLUM STOREFRONT PORTHOLE W/MINDOWS.
- 22 DIVIDER PANEL, SEE PLAN FOR ADDITIONAL INFORMATION.
- 23 ASF-2, STAINLESS STEEL LEDGE TO BE PROVIDED AT INTERIOR STOREFRONT AND DRIVE THROUGH SIDES TYP.
- 24 NOT USED.
- 25 DOUGHNUT PRODUCTION LINE EQUIPMENT SHOWN HALFTONE DASHED TYP. SEE FOOD SERVICE DWGS.
- 26 FRP PANEL DIVISIONS SHOWN DASHED TYP.
- 27 AREA OF CUSTOM WALL GRAPHIC BY OWNER SHOWN SHADED.
- 28 MILLWORK GLAZING COUNTER & STEP.
- 29 OWNER PROVIDED MILLWORK.
- 30 NOT USED.
- 31 NOT USED.
- 32 AREA OF OWNER DISPLAY INSTALLATION SHOWN DASHED, PROVIDE FULL SHEET BACKING.
- 33 SIGNAGE BY OWNER VENDOR SHOWN DASHED.
- 34 48" DIGITAL DISPLAY, FINAL MODEL TO BE COORDINATED WITH OWNER.
- 35 FRP W/ EPB BEHIND FOOD SERVICE EQUIPMENT TYP.
- 36 MILLWORK & CUSTOM FIXTURE SHOWN DASHED SEE DETAILS & EQUIPMENT PLAN.
- 37 CUSTOM FIXTURE SHOWN DASHED, SEE EQUIP PLAN.
- 38 DOUGHNUT PRODUCTION LINE EQUIPMENT SHOWN HALFTONE DASHED TYP. SEE FOOD SERVICE DWGS.
- 39 FOOD SERVICE EQUIPMENT, SEE FS DRAWINGS.
- 40 FREEZER/ COOLER, SEE FS DRAWINGS.
- 41 EMERGENCY LIGHT, SEE ELECTRICAL DWGS.
- 42 LIGHT FIXTURE, SEE ELECTRICAL DWGS.
- 43 WATER HEATER, SEE PLUMBING DWGS.
- 44 TANKLESS WATER HEATER, SEE PLUMBING DWGS.
- 45 SNEEZE GUARD, SEE MILLWORK DWGS.
- 46 MECHANICAL EQUIPMENT, SEE MECHANICAL DWGS.



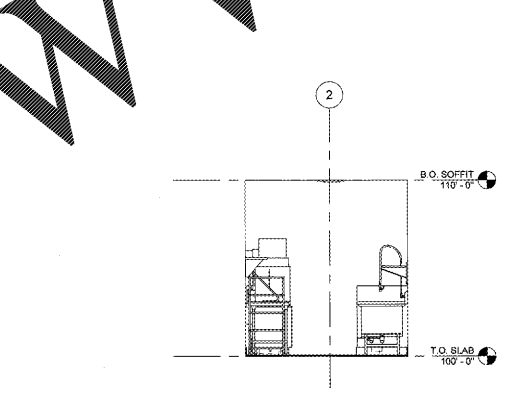
08 interior elevation - washroom
SCALE | 1/4" = 1'-0"



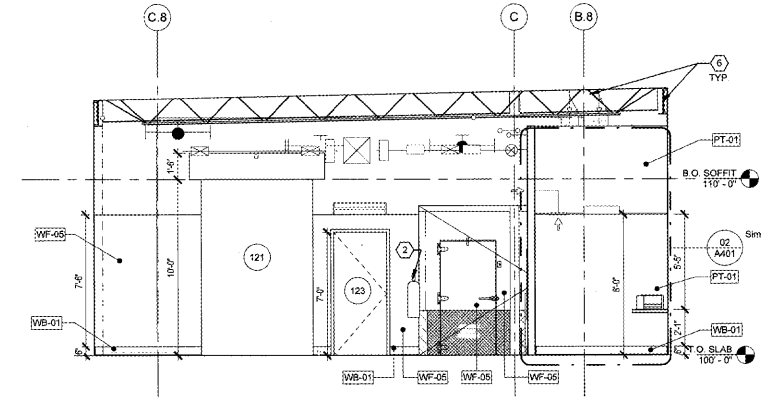
07 interior elevation - washroom
SCALE | 1/4" = 1'-0"



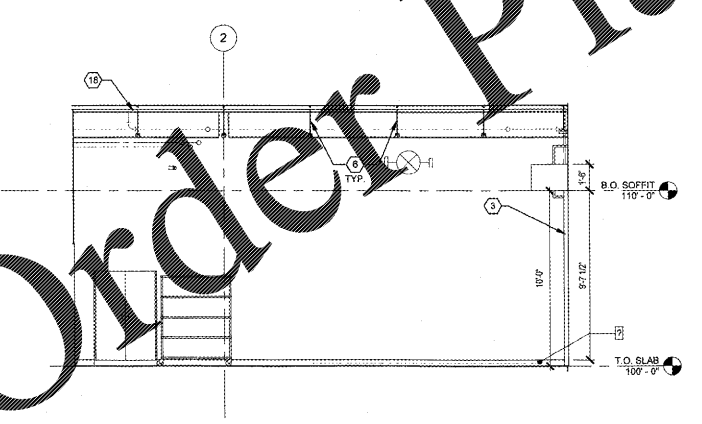
06 interior elevation - washroom
SCALE | 1/4" = 1'-0"



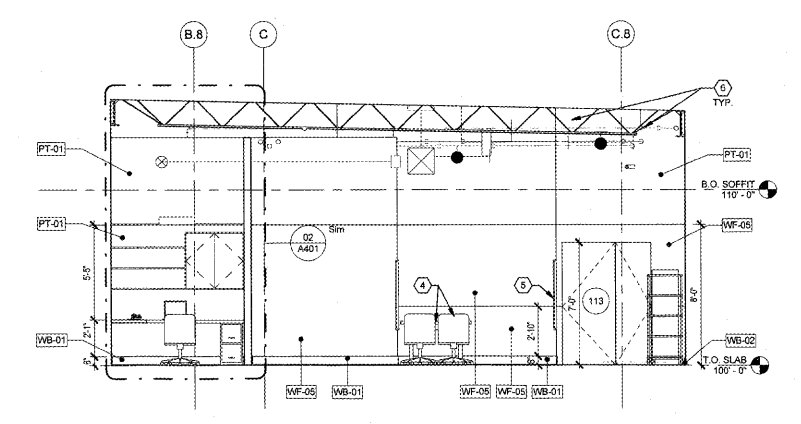
05 interior elevation - washroom
SCALE | 1/4" = 1'-0"



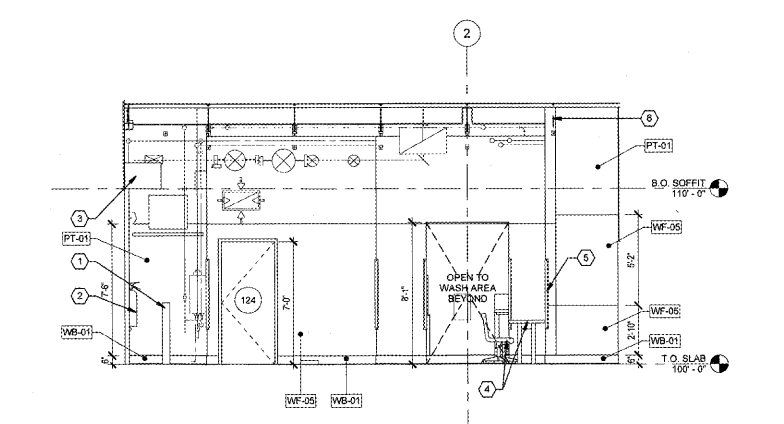
04 interior elevation - allergen
SCALE | 1/4" = 1'-0"



03 interior elevation - allergen
SCALE | 1/4" = 1'-0"



02 interior elevation - storage
SCALE | 1/4" = 1'-0"



01 interior elevation - storage
SCALE | 1/4" = 1'-0"