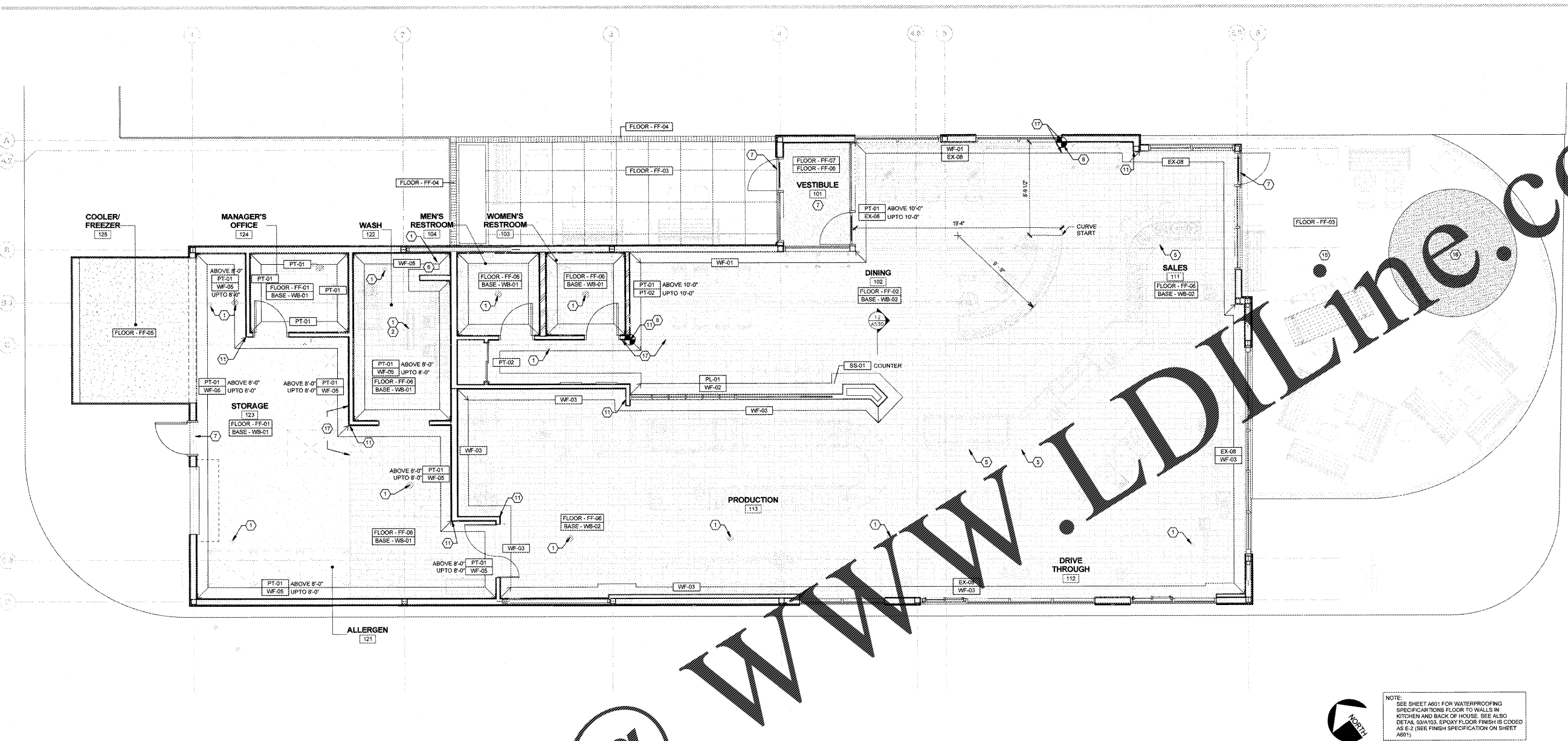




submission:	Date
OWNER/LL REVIEW	11/01/2018
BID SET	11/01/2018
PERMIT SET	11/01/2018

#	Description	Date
---	-------------	------



01 finish floor plan  
SCALE | 1/4" = 1'-0"

WWW.LDLINE.COM

Order Plans @

symbol legend

- NEW PARTITION
- NEW PARTITION (PARTIAL HEIGHT - SEE ELEV. FOR MORE INFO)
- NEW DOOR
- KEYNOTE
- FINISH TAG
- POINT OF BEGINNING (P.O.B.)
- FLOOR SINK
- FLOOR DRAIN
- FLOOR TRENCH

keynotes

- 1 FLOOR DRAIN, SLOPE TILES 1/8" PER FOOT, SEE PLUMBING DRAWINGS.
- 2 TRENCH DRAIN, SLOPE TILES SLAB 1/8" PER FOOT, SEE PLUMBING DRAWINGS.
- 3 LINE INDICATING LIMIT OF NEW PRODUCTION AREA/ EPOXY FLOOR FINISH.
- 4 GO TO INSTALL HIGH CONCRETE CURB BELOW SAFE, INSTALL EPOXY OVER CURB BELOW SAFE - INSTALL EPOXY OVER CURB.
- 5 SALES CABINETS WITH RUBBER BASE ON ALL SIDES @ BOH.
- 6 PRE-FAB MOP SINK - RUN TILE BASE UP SIDE. INSTALL PRIOR TO FLOOR INSTALLATION.
- 7 ALUM THRESHOLD
- 8 START POINT OF FULL TILE.
- 9 HUB DRAIN - REFER TO PLUMBING DRAWINGS.
- 10 FLOOR SINK - REFER TO PLUMBING DRAWINGS.
- 11 S.S. CORNER GUARD AS PER DETAIL A4103.
- 12 CLEAN OUT - REFER TO PLUMBING DRAWINGS.
- 13 EQUIPMENT RAILS TO BE PROVIDED & INSTALLED BY KRISPY KREME. EQUIPMENT DEPARTMENT FLOOR FINISH MUST BE PERFECTLY LEVEL WITH 6" IN ALL DIRECTIONS OF TRACKS.
- 14 ELECTRICAL STUB-UP THRU CONCRETE SLAB TO ELECTRICAL FRYER - REFER TO ELECTRICAL DRAWINGS.
- 15 CONCRETE PAVERS, REFER TO LANDSCAPE DRAWING FOR FURTHER INFORMATION.
- 16 PLAY AREA RUBBER SURFACE, REFER TO LANDSCAPE DRAWING FOR FURTHER INFORMATION.
- 17 ALIGN TILE TRANSITION WITH FACE OF ADJACENT WALL SURFACE WHERE INDICATED.

general notes

- A. ALL FLOOR FINISHES, INCLUDING PATTERNS, TO EXTEND UNDER BOOTH SEATING TABLES, CHAIRS, KITCHEN EQUIPMENT, AND ALSO EXTEND TO ALL WALLS BELOW COUNTER TOPS.
- B. REFER TO RCP, INTERIOR ELEVATIONS, & THE 'FINISH' LEGEND LOCATED ON SHEET A120, A210, A211, A601 FOR MORE INFORMATION ON FINISHES.
- C. AT BACK OF HOUSE PROVIDE CONTINUOUS SEALANT JOINT @ ALL FRIP AND STAINLESS STEEL INTERSECTIONS @ TILE BASE, CEILING, DOOR FRAMES, PLUMBING/ GAS/ ELECTRICAL ROUGH-INS, AND MISCELLANEOUS PENETRATIONS.
- D. CAULK ALL JOINTS BETWEEN WALL TILE AND DOOR FRAMES COLOR TO MATCH GROUT U.N.O. IN DRAWING SET. INSTALL CLEAR SEALANT JOINTS WHERE WINDOWS ABOUT A WOOD/ METAL FINISH U.N.O. IN DRAWING SET. INSTALL COLORED SEALANT JOINTS WHERE WINDOWS ABOUT AN INTERIOR WALL SURFACE, COLOR TO MATCH STOREFRONT U.N.O. IN DRAWING SET.
- E. PROVIDE F.T. BLOCKING IN KITCHEN WALL AS REQUIRED BY F.S.E.C. FOR EQUIPMENT MILLWORK SHELVES, ETC. VERIFY HEIGHTS & LOCATIONS, REFER TO KITCHEN EQUIPMENT DRAWINGS.
- F. REFER TO MEP AND KITCHEN DRAWINGS FOR ALL UNDER SLAB WORK.
- G. REFER TO PLUMBING DRAWINGS FOR EXACT FLOOR DRAIN AND FLOOR SINK LOCATIONS. G.C. TO COORDINATE ALL KITCHEN AND FLOOR DRAWINGS WITH KITCHEN EQUIPMENT PRIOR TO PLACEMENT TO AVOID TABLE LEGS FROM FALLING WITHIN A FLOOR SINK OR ON A FLOOR DRAIN.
- H. TILE CONTRACTOR TO ENSURE THAT FLOOR TILE IS FLUSH WITH COVED BASE TILE PER HEALTH DEPARTMENT AT KITCHEN AND TOILET ROOMS.
- I. WALLS AND CEILING OF KITCHEN AND PREP AREAS SHALL HAVE A SMOOTH & WASHABLE FINISH.
- J. G.C. TO ENSURE THAT NEW FLOOR SLAB IS AT AN ACCEPTABLE TOLERANCE LEVEL TO MINIMIZE THE UPPAGE FOR THE REQUIRED FLOOR FINISH INSTALLATION. REFER TO FINISH SPECIFICATIONS FOR MORE INFORMATION. G.C. TO INFORM ARCHITECT OF DISCREPANCIES.
- K. FLOOR TILES TO BE NON-SLIP WITH A MIN. SLIP CO-EFFICIENT OF FRICTION OF 0.8 OR BETTER.
- L. G.C. TO PROVIDE WATERPROOFING 12" UP THE WALL AND 12" ONTO THE FLOOR WHERE INDICATED.
- M. ALL MATERIAL TRANSITIONS TO MEET A.D.A. GUIDELINES.
- N. ALL FLOOR PENETRATIONS TO BE SEALED, WATERPROOFED, AND FIRE RATED.
- O. TENANT G.C. TO COORDINATE LOCATION AND QUANTITY OF MOVEMENT JOINTS IN ALL TILE FLOORING.
- P. MAXIMUM FLOOR SLOPE IN ANY DIRECTION IS 1 IN 20.
- Q. ALL KITCHEN FLOORS TO HAVE NO MORE THAN 1/8" PER FOOT SLOPE TO FLOOR DRAINS.
- R. PERFORM FLOOD TEST IN ALL B.O.H. FLOOR LOCATIONS AFTER INSTALLATION. G.C. TO PERFORM FLOOD TEST IN ALL WATERPROOFED AREAS AFTER INSTALLATION.
- S. G.C. TO PROVIDE CRACK ISOLATION/ WATERPROOFING AS SPECIFIED FOR THE FOLLOWING CONDITIONS REFER TO FINISHED FLOOR PLAN FOR LOCATIONS.
- T. AT B.O.H. AND RESTROOM SLAB ON GRADE CONDITIONS G.C. TO PROVIDE CRACK ISOLATION/ WATERPROOFING MEMBRANE 12" UP WALL & FULL COVERAGE ONTO FLOOR.
- U. AT F.O.H. SUSPENDED DECK LOCATIONS G.C. TO PROVIDE CONTINUOUS CRACK ISOLATION/ WATERPROOFING MEMBRANE.
- V. AT ALL B.O.H. SUSPENDED DECK LOCATIONS G.C. TO PROVIDE CONTINUOUS CRACK ISOLATION/ WATERPROOFING MEMBRANE 12" UP THE WALL IN ADDITION TO A CONTINUOUS MEMBRANE ON THE DECK.

SEE SHEET A601 FOR FLOOR AND WALL FINISH SCHEDULE

