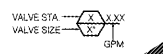


IRRIGATION LEGEND	
(M)	EX. 1" IRRIGATION METER LOCATED IN LANDSCAPE AREA.
(B)	EX. BACKFLOW PREVENTER IN HOT BOX. LOCATED IN LANDSCAPE AREA.
(C)	HUNTER 1-CORE IRRIGATION CONTROLLER WITH PLASTIC CABINET IN ELECTRICAL ROOM. HUNTER IC-1200-PL.
(S)	HUNTER WIRELESS SOLAR SYNC (EVAPOTRANSPIRATION, RAIN AND FREEZE SENSORS). MOUNT SENSOR ON ROOF IN DISCREET LOCATION EVEN WITH TOP OF PARAPET WALL. CLEAR OF OBSTRUCTIONS. INSTALL PER HUNTER INSTALLATION INSTRUCTIONS. HUNTER WSS.
---	1-1/2" PVC SCHEDULE 40 IPS PLASTIC PIPE MAIN LINE
---	PVC CLASS 200 IPS PLASTIC PIPE OR POLYETHYLENE SDR PRESSURE RATED LATERAL LINE. SIZE BY CONTRACTOR.
---	4" DIAMETER SCHEDULE 40 PVC IRRIGATION SLEEVE. GENERAL CONTRACTOR TO INSTALL AND FLAG EXCIS.
---	LANDSCAPE DRIP LINE @ 4 GPH. 18" EMITTER SPACING. NETAFIM TECHLINE CV MODEL # TL04-18 LATERAL ROW SPACING 18" APART. DRIP LINES SHALL BE 4" DEEP AT ALL POINTS. INSTALL NETAFIM MODEL # TL50V FLUSH VALVE AT END OF EACH DRIP LINE.
(E)	1" ELECTRIC REMOTE CONTROL VALVE WITH ADJUSTABLE PRESSURE REGULATOR. HUNTER ICV-1016S-ADJ.
(R)	1" ELECTRIC REMOTE DRIP CONTROL VALVE. HUNTER IC2-101-40 DRIP CONTROL ZONE KIT WITH 40 PSI PRESSURE REGULATOR.
(Q)	1" QUICK COUPLER VALVE WITH LOCKING RUBBER COVER. HUNTER HQ-44-LRC AW WITH HK-44A KEY AND HS-1 SWIVEL.
(P)	4" POP-UP IN LAWN. HUNTER MP ROTATOR NOZZLE. HUNTER PROS-64-PROS-CV SPRAY WITH 40 PSI PRESSURE REG. AND CHECK VALVE.



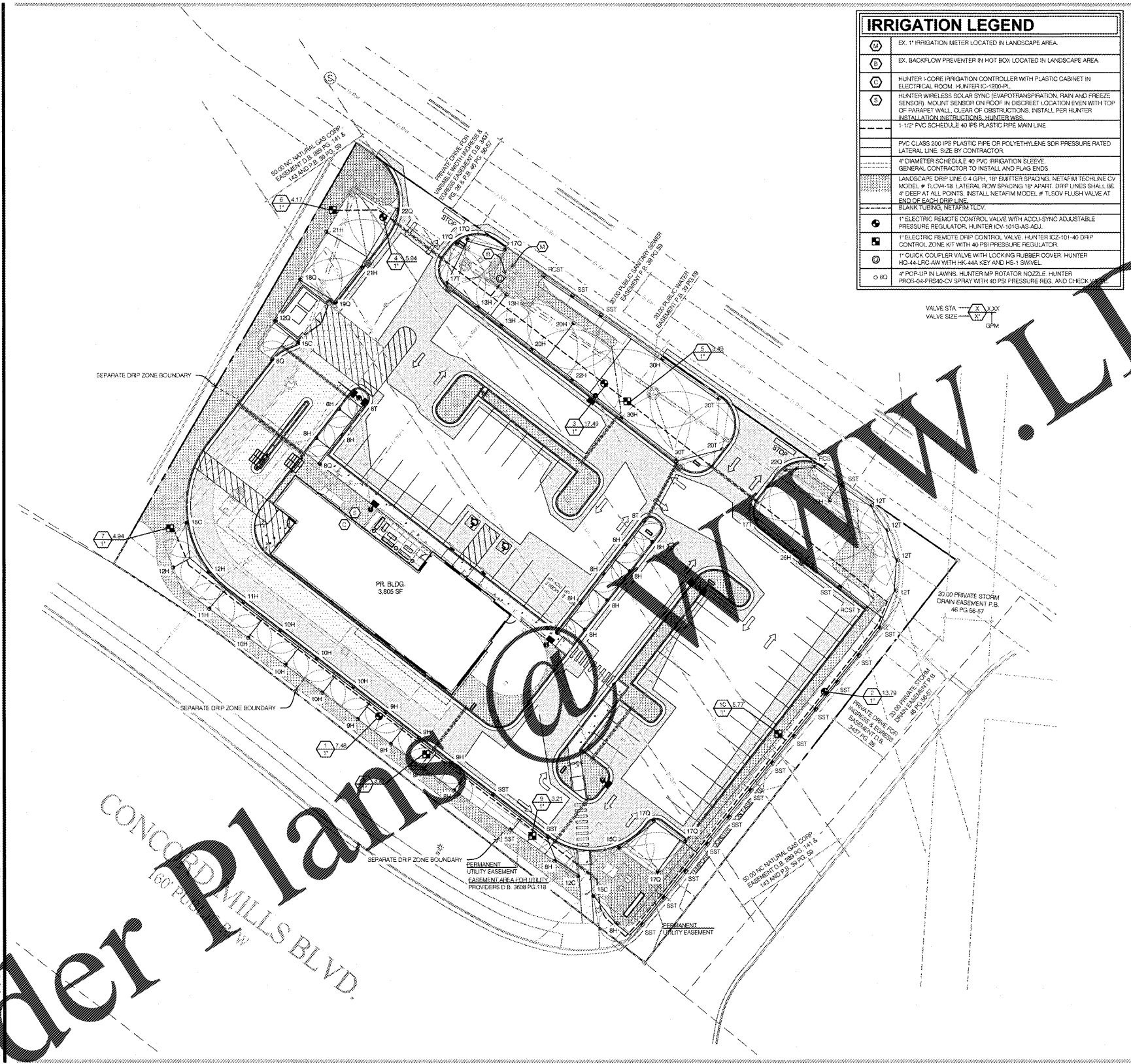
### irrigation notes

- A. PRIOR TO ANY EXCAVATION AT THE SITE, CONTRACTOR SHALL EXAMINE ANY APPLICABLE DRAWINGS AVAILABLE FROM THE OWNER AND/OR LANDSCAPE ARCHITECT AND CONSULT WITH OWNER'S REPRESENTATIVE AND UTILITY COMPANIES REPRESENTATIVES TO DETERMINE POSSIBLE UTILITY LOCATIONS AND DEPTHS. NO COMPENSATION WILL BE GRANTED FOR FAILURE TO COMPLY WITH THIS REQUIREMENT. DO NOT PROCEED WITH THE INSTALLATION OF THE IRRIGATION SYSTEM WHEN IT IS OBVIOUS IN THE FIELD THAT OBSTRUCTIONS OR GRADE DIFFERENCES EXIST THAT MIGHT NOT HAVE BEEN CONSIDERED IN THE DESIGN. IF DISCREPANCIES IN CONSTRUCTION DETAILS, LEGEND, NOTES OR SPECIFICATIONS ARE DISCOVERED, BRING ALL SUCH OBSTRUCTIONS OR DISCREPANCIES TO THE ATTENTION OF THE OWNER'S REPRESENTATIVE.
- B. IRRIGATION PLAN IS SCHEMATIC. LOCATIONS OF PROPOSED IRRIGATION MAIN LINE, LATERALS, VALVES, AND SPRINKLER HEADS ARE SHOWN SCHEMATICALLY FOR CLARITY, AND SHALL BE LOCATED IN GREEN SPACE AT DISCRETION OF IRRIGATION CONTRACTOR. ALL OTHER DESIGN COMPONENTS MAY BE SHOWN OUTSIDE PLANTING AREAS FOR CLARITY. ALL IRRIGATION PIPE AND WIRING IN LANDSCAPED AREAS WHENEVER POSSIBLE, FREE AND UNHINDERED, SHALL BE SHOWN ON LANDSCAPE PLAN TAKE PRECEDENCE OVER IRRIGATION PLANS. CONTRACTOR SHALL AVOID CONFLICTS BETWEEN THE IRRIGATION SYSTEM, PLANTING, MATERIALS AND ARCHITECTURAL FEATURES.
- C. IRRIGATION MAIN LINE AND VALVES SHALL NOT BE INSTALLED WITHIN THE RIGHT-OF-WAY WITHOUT WRITTEN CONSENT OF THE LOCAL JURISDICTION. IRRIGATION CONTRACTOR SHALL SUBMIT "NOTICE OF CONSTRUCTION" SHOWING ALL VALVES, HEADS AND SIZES TO OWNER PRIOR TO INSTALLATION.
- D. THE IRRIGATION CONTRACTOR IS RESPONSIBLE TO INSTALL SYSTEM THAT WILL PROPERLY IRRIGATE ALL AREAS PLANTED ON PLANTING PLANS.
- E. IRRIGATION CONTRACTOR SHALL MAKE ANY FIELD ADJUSTMENTS IN THE SYSTEM NECESSARY TO MAKE THE SYSTEM PERFORM AS SPECIFIED TO PROVIDE FULL COVERAGE.
- F. HEADS SHALL BE INSTALLED 2' FROM CURB, ELEMENT AND 4" MIN FROM BUILDING WALLS.
- G. IRRIGATION CONTRACTOR TO VERIFY OPERATION WATER PRESSURE. IF APPLICABLE, INSTALL 1" PRESSURE GAUGE. USE GAUGE #49LUB-23, RAINBIRD #RSP1MAX-100, OR EQUIVALENT DOWNSTREAM SHUT-OFF VALVE.
- H. IRRIGATION CONTRACTOR SHALL PROVIDE AS-BUILT DRAWINGS AND KEYS TO CONTROLLER CABINET TO THE OWNER PRIOR TO FINAL ACCEPTANCE.
- I. IRRIGATION CONTROLLER AND PROGRAMMING TO BE PROVIDED BY IRRIGATION CONTRACTOR. IRRIGATION CONTRACTOR TO VERIFY LOCATION AND OPERATION OF CONTROLLER WITH OWNER'S REPRESENTATIVE.
- K. BECULINES SHALL BE ESTABLISHED BY THE LANDSCAPE CONTRACTOR AND APPROVED BY OWNER'S REPRESENTATIVE PRIOR TO THE INSTALLATION OF THE IRRIGATION SYSTEM.
- L. THE IRRIGATION SYSTEM SHALL BE INSTALLED AND FULLY OPERATIONAL BEFORE PLANT INSTALLATION MAY BEGIN.
- M. LATERAL LINES SHALL BE 12" MIN BELOW FINISH GRADE. MAIN LINE SHALL BE 18" MIN BELOW FINISH GRADE. SLEEVES SHALL BE 24" MIN BELOW PAVEMENT, AND EXTEND AT LEAST 12" BEYOND PAVEMENT. ALL WIRES LOCATED BELOW PAVEMENT SHALL BE INSTALLED IN A SEPARATE PVC SLEEVE, BACKFILL WITH CLEAN SOIL FREE OF ROCKS, AND TAMP EVERY 4" OF LIFT.
- N. ALL CONTROL WIRE TO BE RUN UNDER MAIN LINE. CONTROL WIRE SHALL BE DIRECT BURIAL SOLID COPPER MIN. GAUGE #14 AWG-UP (#12 AWG-UP FOR RUNS OVER 2000 LF). COMMON GROUND WIRE TO BE WHITE MIN. GAUGE #12 AWG-UP. PROVIDE SEPARATE GROUND WIRE FOR EACH IRRIGATION CONTROLLER. ALL ELECTRICAL CONNECTIONS SHALL BE WATER PROOF SPLICES.
- O. ALL DEBRIS SPILLED IN ANY ADJACENT R.O.W. AND/OR ADJOINING PROPERTIES SHALL BE CLEANED UP AND REMOVED BY THE CONTRACTOR.
- P. IRRIGATION CONTRACTOR TO ADJUST RADIUS AND ARC OF SPRAY NOZZLES TO MINIMIZE OVERSPRAY ON BUILDINGS AND HARDSCAPE. PROVIDE TO THE OWNER PRIOR TO THE COMPLETION OF THE PROJECT. TWO (2) OPERATING KEYS FOR EACH SERVING WRENCH OR TOOL, NEEDED FOR COMPLETE ACCESS, ADJUSTMENT AND REPAIR OF SPRINKLERS.
- Q. IRRIGATION CONTRACTOR SHALL PROVIDE A BID ALTERNATE FOR AN ONGOING MAINTENANCE AND REPAIR PROGRAM FOR IRRIGATION SYSTEM.
- R. IRRIGATION SYSTEM SHALL COMPLY WITH ALL LOCAL REQUIREMENTS. INSTALL ALL ELECTRICAL POWER TO THE IRRIGATION CONTROL SYSTEM IN ACCORDANCE WITH THE NATIONAL ELECTRIC CODE AND ALL APPLICABLE LOCAL ELECTRICAL UTILITY CODES.
- S. SEE IRRIGATION INSTALLATION DETAILS.

PRODUCTS PROVIDED BY RAINBIRD OR HUNTER THAT ARE OF EQUAL OR SUPERIOR QUALITY AND CONSTRUCTION ARE ACCEPTABLE PRODUCT ALTERNATES.

NOZZLE LEGEND			
(C)	CORNER, 45°	(SST)	SIDE STRIP
(Q)	QUARTER CIRCLE, 90°	(LCST)	LEFT CORNER STRIP
(T)	THIRD CIRCLE, 120°	(RCST)	RIGHT CORNER STRIP
(H)	HALF CIRCLE, 180°		
(TT)	CIRCLE, 210°		
(TO)	THREE QUARTER CIRCLE, 270°		
(F)	FULL CIRCLE, 360°		

EXAMPLE: (SST) = 8' RADIUS, 90° ARC  
NOTE: ALL MP ROTATOR NOZZLES HAVE ADJUSTABLE RADIUS AND ARC AND SHALL BE ADJUSTED TO MINIMIZE OVERSPRAY ONTO IMPERVIOUS SURFACES.  
HUNTER MP ROTATOR NOZZLE MODELS:  
MP900SR-90 = 9' RADIUS, ADJUSTABLE 90°-210°  
MP1000SR-90 = 10' RADIUS, ADJUSTABLE 90°-210°  
MP1000SR-120 = 10' RADIUS, ADJUSTABLE 120°-270°  
MP1000SR-150 = 10' RADIUS, ADJUSTABLE 150°-300°  
MP1000SR-180 = 10' RADIUS, ADJUSTABLE 180°-360°  
MP1200SR-90 = 12' RADIUS, ADJUSTABLE 90°-210°  
MP1500SR-90 = 15' RADIUS, ADJUSTABLE 90°-210°  
MP2000SR-90 = 20' RADIUS, ADJUSTABLE 90°-210°  
MP2500SR-90 = 25' RADIUS, ADJUSTABLE 90°-210°  
MP3000SR-90 = 30' RADIUS, ADJUSTABLE 90°-210°  
MP3500SR-90 = 35' RADIUS, ADJUSTABLE 90°-210°  
MP4000SR-90 = 40' RADIUS, ADJUSTABLE 90°-210°  
MP4500SR-90 = 45' RADIUS, ADJUSTABLE 90°-210°  
MP5000SR-90 = 50' RADIUS, ADJUSTABLE 90°-210°  
MP5500SR-90 = 55' RADIUS, ADJUSTABLE 90°-210°  
MP6000SR-90 = 60' RADIUS, ADJUSTABLE 90°-210°  
MP6500SR-90 = 65' RADIUS, ADJUSTABLE 90°-210°  
MP7000SR-90 = 70' RADIUS, ADJUSTABLE 90°-210°  
MP7500SR-90 = 75' RADIUS, ADJUSTABLE 90°-210°  
MP8000SR-90 = 80' RADIUS, ADJUSTABLE 90°-210°  
MP8500SR-90 = 85' RADIUS, ADJUSTABLE 90°-210°  
MP9000SR-90 = 90' RADIUS, ADJUSTABLE 90°-210°  
MP9500SR-90 = 95' RADIUS, ADJUSTABLE 90°-210°  
MP10000SR-90 = 100' RADIUS, ADJUSTABLE 90°-210°  
MP10500SR-90 = 105' RADIUS, ADJUSTABLE 90°-210°  
MP11000SR-90 = 110' RADIUS, ADJUSTABLE 90°-210°  
MP11500SR-90 = 115' RADIUS, ADJUSTABLE 90°-210°  
MP12000SR-90 = 120' RADIUS, ADJUSTABLE 90°-210°  
MP12500SR-90 = 125' RADIUS, ADJUSTABLE 90°-210°  
MP13000SR-90 = 130' RADIUS, ADJUSTABLE 90°-210°  
MP13500SR-90 = 135' RADIUS, ADJUSTABLE 90°-210°  
MP14000SR-90 = 140' RADIUS, ADJUSTABLE 90°-210°  
MP14500SR-90 = 145' RADIUS, ADJUSTABLE 90°-210°  
MP15000SR-90 = 150' RADIUS, ADJUSTABLE 90°-210°  
MP15500SR-90 = 155' RADIUS, ADJUSTABLE 90°-210°  
MP16000SR-90 = 160' RADIUS, ADJUSTABLE 90°-210°  
MP16500SR-90 = 165' RADIUS, ADJUSTABLE 90°-210°  
MP17000SR-90 = 170' RADIUS, ADJUSTABLE 90°-210°  
MP17500SR-90 = 175' RADIUS, ADJUSTABLE 90°-210°  
MP18000SR-90 = 180' RADIUS, ADJUSTABLE 90°-210°  
MP18500SR-90 = 185' RADIUS, ADJUSTABLE 90°-210°  
MP19000SR-90 = 190' RADIUS, ADJUSTABLE 90°-210°  
MP19500SR-90 = 195' RADIUS, ADJUSTABLE 90°-210°  
MP20000SR-90 = 200' RADIUS, ADJUSTABLE 90°-210°



architect + engineer  
**wdp** thinks that do  
7007 DISCOVERY BLVD  
DUBLIN, OH 43017  
614.534.7009 T  
WDPARTNERS.COM

project no. | KRKNS0002

OWNER  
**Kruppy Krems DOUGHNUTS**  
KERRY KREMS  
819 CONCORD MILLS BOULEVARD  
CONCORD, NC

project info

issue dates

submission:	089
OWNER'S REVIEW:	11/01/2018
BID SET:	11/01/2018
PERMIT SET:	11/01/2018

revisions:

#	description	date
1		

designed by: B. FRIDENMAKER  
checked by: B. FRIDENMAKER

seal

sheet info  
NOV 02 2018  
**IRRIGATION PLAN**  
**L1.03**

landscape

Order Plans  
CONCORD MILLS BLVD.  
160 P.O. BOX 118

**811**  
Know what's below.  
Call before you dig.

