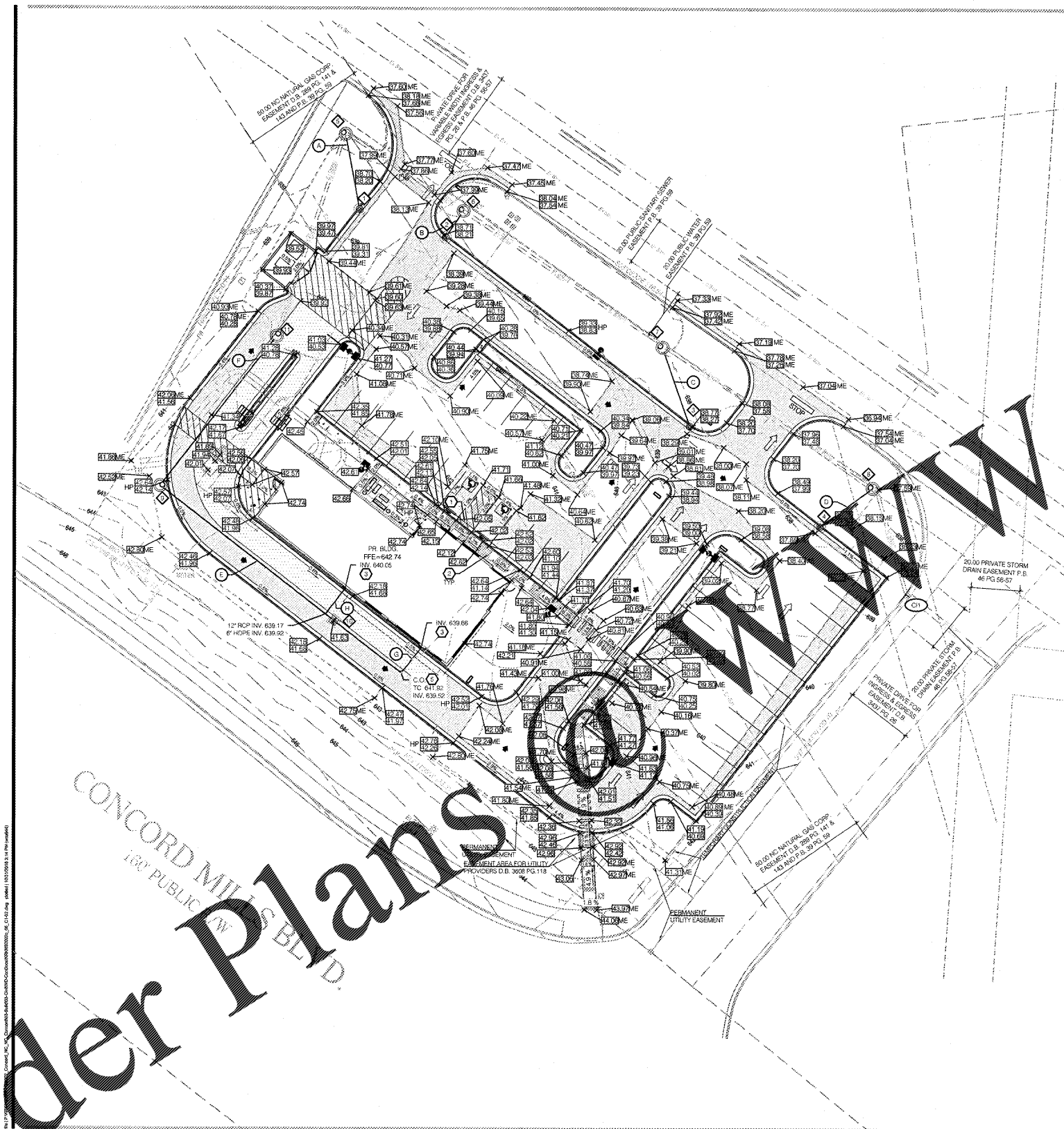


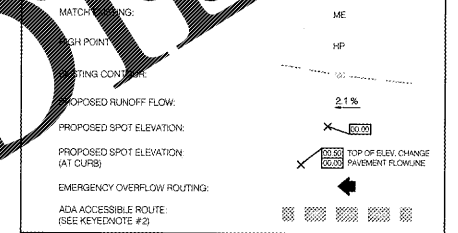
Order Plans



**keyed notes**

- ① CONCRETE GUTTER/PAVEMENT SHALL BE FLUSH WITH WALK IN HANDICAP ACCESSIBLE AREA. SEE SIDEWALK RAMP DETAIL SHEET 01.07.
- ② ACCESSIBLE ROUTE FROM BUILDING TO ACCESSIBLE PARKING AND PUBLIC RIGHT-OF-WAY. GROSS SLOPE IS NOT TO EXCEED 2.00%.
- ③ HOPE STORM LINE FROM DOWNSPOUTS. USE BOOT CONNECTION AND EXTEND TO STORM STRUCTURE. SEE DETAIL SHEET 01.07. FOR EXACT DOWNSPOUT LOCATIONS, SEE ARCHITECTURAL DRAWINGS. PROVIDE CLEANOUT AS SHOWN BY CO. SEE DETAIL SHEET 01.07.
- ④ NOT USED.
- ⑤ STORM CLEANOUT. SEE DETAIL SHEET 01.07.

**grading legend**



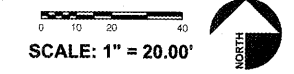
**storm pipe schedule**

- A 28.0 LINEAR FEET OF 12" RCP @ 1.0% SLOPE
- B 9.5 LINEAR FEET OF 12" RCP @ 1.0% SLOPE
- C 30.6 LINEAR FEET OF 12" RCP @ 1.0% SLOPE
- D 25.2 LINEAR FEET OF 12" RCP @ 1.0% SLOPE
- E 66.4 LINEAR FEET OF 12" RCP @ 1.0% SLOPE
- F 72.7 LINEAR FEET OF 12" RCP @ 1.0% SLOPE
- G 46.1 LINEAR FEET OF 6" HOPE @ 1.0% SLOPE
- H 13.3 LINEAR FEET OF 6" HOPE @ 1.0% SLOPE

**storm structure schedule**

SEE DETAILS, SHEETS 01.07

<p>① EXISTING CURB INLET TOP = 638.27 FL = 637.77 EX 15" INV. IN NW = 631.68 EX 24" INV. OUT SE = 631.55</p>	<p>PROPOSED CURB INLET TOP = 639.17 FL = 638.67 PR 12" INVERT NW = 635.35</p>	<p>PROPOSED CURB INLET TOP = 639.71 FL = 638.21 PR 12" INVERT NE = 634.55</p>
<p>PROPOSED CURB INLET TOP = 638.77 FL = 638.27 PR 12" INVERT NW = 633.87</p>	<p>PROPOSED CURB INLET TOP = 638.27 FL = 637.77 PR 12" INVERT NE = 632.91</p>	<p>PROPOSED MANHOLE RM = 638.44 EX 15" INVERT IN NW = 634.45 EX 15" INVERT OUT SE = 634.42 PR 12" INVERT IN SW = 634.45</p>
<p>PROPOSED MANHOLE RM = 638.27 EX 15" INVERT OUT SE = 634.89 EX 15" INVERT IN W = 635.00 (MAY BE ABANDONED) EX 15" INVERT SW = 635.07 PR 12" INVERT S = 635.07</p>	<p>PROPOSED MANHOLE RM = 638.31 EX 15" INVERT IN NW = 633.66 EX 15" INVERT OUT SE = 633.50 PR 12" INVERT IN SE = 633.66</p>	<p>PROPOSED MANHOLE RM = 637.39 EX 15" INVERT IN NW = 632.66 EX 15" INVERT OUT SE = 632.51 PR 12" INVERT IN SW = 632.66</p>
<p>PROPOSED MANHOLE RM = 642.64 PR 12" INVERT IN SE &amp; NE = 638.34</p>	<p>PROPOSED CATCH BASIN RM = 641.63 PR 6" INVERT IN SE = 639.20 PR 12" INVERT OUT NW = 639.20</p>	
<p>PROPOSED MANHOLE RM = 640.53 PR 12" INVERT IN SW = 637.61 EX 15" INVERT OUT NE = 637.61</p>		



architect + engineer  
**wd** .com  
thinks that 6"

7007 DISCOVERY BLVD  
DUBLIN, OH 43017  
614.634.7000 T  
WDPARTNERS.COM

project no. | KRKNS0002

owner  
**Kruppy's Pretzels DOUGHNUTS**  
KIRBY WISSE  
8018 CONCORD MILLS BOULEVARD  
CONCORD, NC

project info

submission:	date
OWNERS REVIEW	11/01/2018
BID SET	11/01/2018
PERMIT SET	11/01/2018

revisions:

#	description	date
---	-------------	------

designed by: B. FRIDENMAKER  
checked by: A. SCHALL

SEAL  
FOR THE PROFESSION  
NOV 02 2018

sheet info  
**SITE GRADING & DRAINAGE PLAN**  
**C1.02**