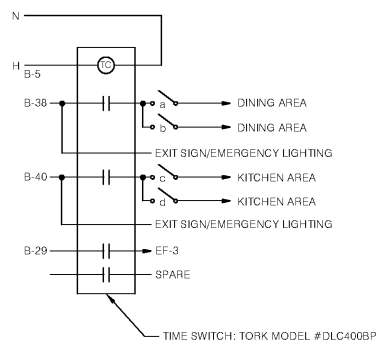
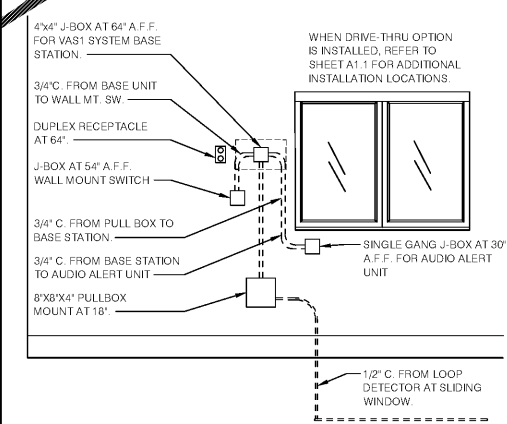


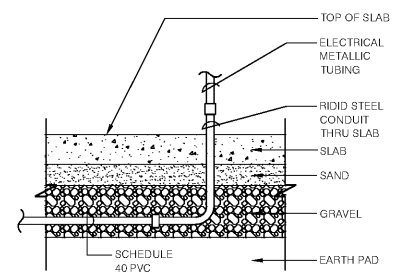
DESCRIPTION OF OPERATION:
COORDINATE WITH PIZZA HUT CONSTRUCTION
MANAGER ON TIME SETTINGS FOR INTERIOR
LIGHTING.



INTERIOR LIGHTING DIAGRAM N.T.S. 7



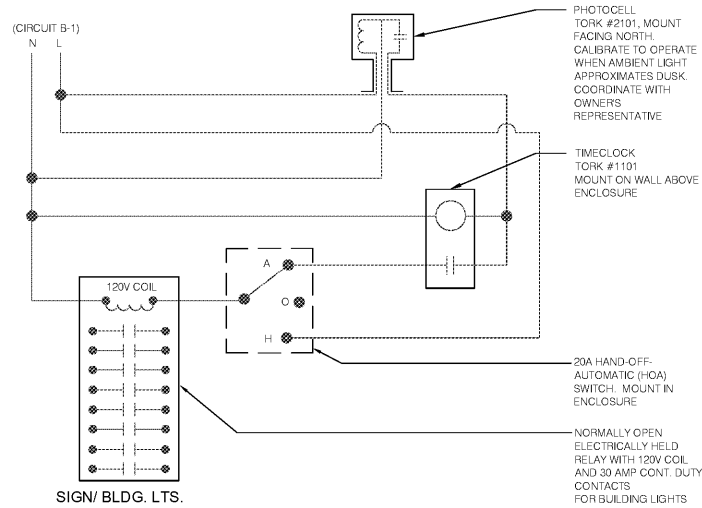
ELEVATION AT SLIDING WINDOW N.T.S. 1



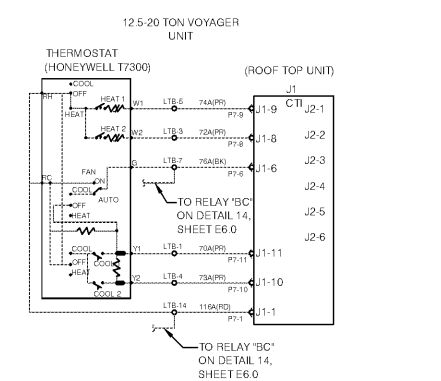
NOTE: GREEN GROUND WIRE
REQUIRED IN ALL CONDUITS
PER N.E.C. REQUIREMENTS.

UNDER SLAB CONDUIT N.T.S. 8

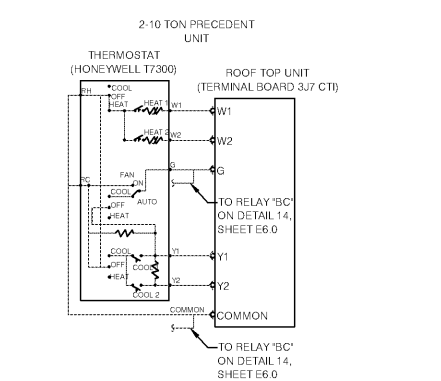
SEQUENCE OF OPERATIONS
* SET TIME SWITCH FOR THE HOURS THE STORE
WILL BE OCCUPIED. COORDINATE WITH OWNERS
REPRESENTATIVE.
* ADJUST PHOTOCELL TO ACTIVATE WHEN
AMBIENT LIGHT APPROXIMATES DUSK.
COORDINATE WITH OWNERS REPRESENTATIVE.
* SET SWITCH TO THE 'AUTOMATIC' POSITION.
SIGNS AND LIGHTS WILL NOW BE ENERGIZED WHEN
THE TIME CLOCK INDICATES THE STORE IS
OCCUPIED AND THE PHOTOCELL INDICATES LOW
LIGHT LEVELS.
* WHEN THE STORE CLOSES BUT IS STILL
OCCUPIED, THE SIGNS/ BUILDING LIGHTS SWITCH
SHOULD BE TURNED TO 'OFF' TO EXTINGUISH
THESE LIGHTS.



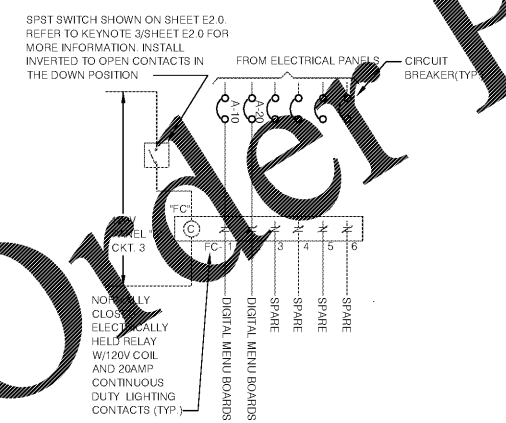
EXTERIOR LIGHTING CONTROL RELAY N.T.S. 5



THERMOSTAT WIRING DIAGRAM N.T.S. 2



THERMOSTAT DETAIL N.T.S. 3



DIGITAL MENU BOARDS CONTROL N.T.S. 9

NOT USED N.T.S. 6

08/10/18
1845
DRAWN: BH, MJ, SO
CHECKED: AR, CF
ACG #: 1820228

ELECTRICAL DETAILS



FRANCHISEE
MC
International
7300 W. 129TH STREET
OVERLAND PARK, KANSAS
66213
PHONE: (913) 327-5555
FAX: (913) 327-5850

PIZZA HUT #1845
5229 US HWY 231
WETUMPKA, ALABAMA

ACERTUS
CONSULTING GROUP, LLC
14817 West 55th Street • Lenexa, Kansas 66215
P 913.322.5150 • F 913.322.5155
www.AcertusGroup.com



ALABAMA
LICENSED
No. 28520-E
PROFESSIONAL
ELECTRICAL ENGINEER
DAVID L. M. MESSNER

10/09/18
SHEET NUMBER
E5.0

Order Plans @

WWW.LDILine.com