

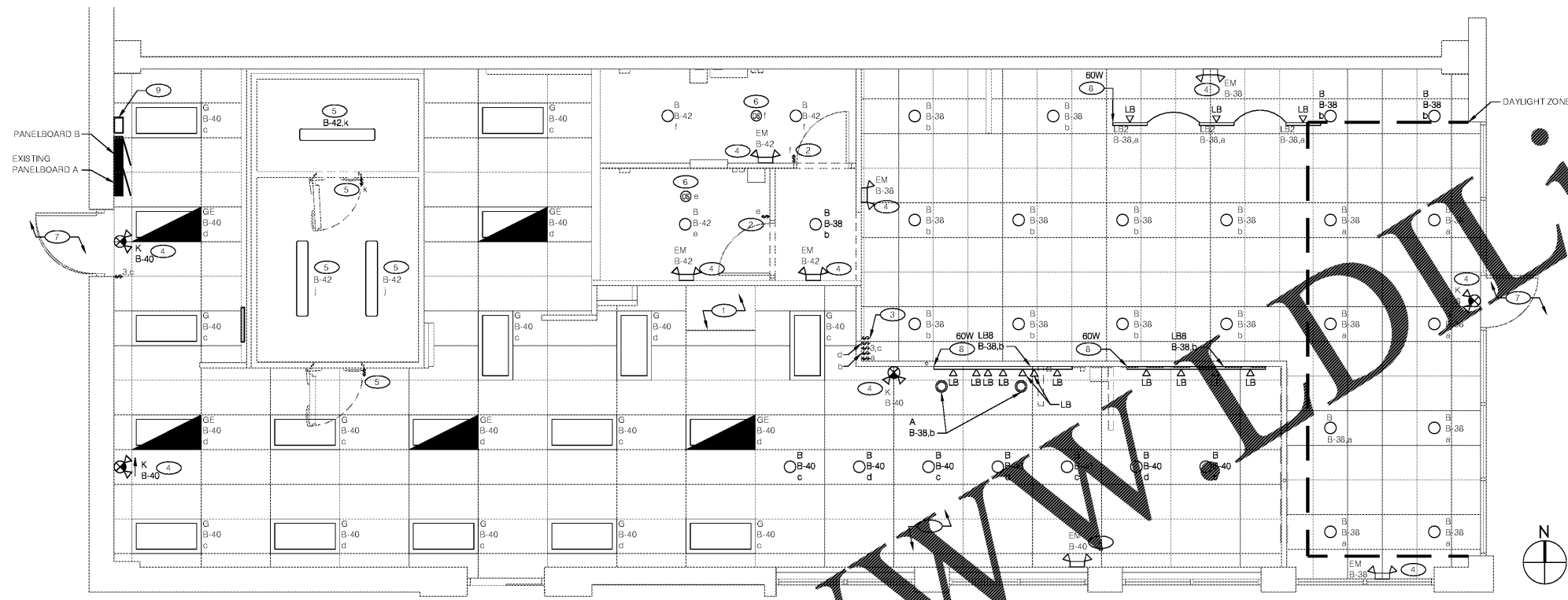
LIGHTING PLAN &
 SCHEDULE



PIZZA HUT #1845
 5229 US HWY 231
 WETUMPKA, ALABAMA



SHEET NUMBER
E2.0



LIGHTING PLAN 1/4"=1'-0" 1

| NO. | QUANTITY | LOCATION | MANUFACTURER / CATALOG NUMBER | DESCRIPTION | LAMP | | MOUNTING | VOLT | WATT | REMARKS |
|-----|----------|---------------------|--|---|------|------------------------------|-----------|------|------|---|
| | | | | | # | TYPE | | | | |
| A | 2 | BOOTHS & CASHWRAP | ACCUSERV/00298-105 | CORD-HUNG PENDANT, RED SAND GLASS SHADE | 1 | GU24 100W SOCKET SATCO 2500K | RECESSED | 120 | 11 | |
| B | 31 | SERVICE & RESTROOM | ACCUSERV/0039-017/CT6F/B/RC6-GU24 | 6" RECESSED CAN | 1 | LED | RECESSED | 120 | 12 | |
| C | 0 | SERVICE & RESTROOM | HALO/H71CT-310P | 6" RECESSED CAN | 1 | LED | RECESSED | 120 | 12.5 | WITH PHILIPS 12.5PAR30L / F36 2700 DIM LAMP |
| D | 0 | RESTROOM | ACCESS LIGHTING / 31002 | RETRACTABLE SCORNER | 1 | (75W SOCKET) LED | WALL | 120 | 24 | |
| EM | 7 | DINING & RR KITCHEN | DAY-BRITE/ CAX6 | EMERGENCY LIGHT | 2 | W/ FIXT | WALL | 120 | 6 | VERIFY COLOR WITH ARCH |
| G | 13 | KITCHEN | LITHONIA/ 2VTL4-48L-ADP-EZ1P | LED TRACK LIGHT | 1 | W/ FIXTURE | CEILING | 120 | 39 | |
| GE | 5 | KITCHEN | LITHONIA/ 2VTL4-48L-ADP-EZ1P635-F | LED TRACK LIGHT | 1 | W/ FIXTURE | CEILING | 120 | 39 | W/ EMERGENCY BATTERY PACK |
| H | 0 | EXTERIOR WALL | HI-LITE/H-PAR30-91/36-1-91/GU24 | EXTERIOR SCORNER | 1 | LED | WALL | 120 | 12.5 | W/ GREEN CREATIVE LED 12.5PAR30S4DIM/830FL40/FU24-16282 |
| J13 | 0 | PATIO | PARTLIGHTS/ 25', 24" SPACING W/ (13) BULBS #11914C CLEAR LAMP 25' PAR30 AIRCRAFT CAD | FESTOON LIGHTS | 13 | E26/E27 SOCKET 25W MAX PER | SURFACE | 120 | 325 | |
| J25 | 0 | PATIO | PARTLIGHTS/ 50', 24" SPACING W/ (25) BULBS #11914C CLEAR LAMP 50' PAR30 AIRCRAFT CAD | FESTOON LIGHTS | 25 | E26/E27 SOCKET 25W MAX PER | SURFACE | 120 | 625 | |
| K | 4 | KITCHEN DINING | BESTLIGHT/ CL... W-RC | COMBO EMERGENCY/EXIT | 36 | LED | CEILING | 120 | 4.5 | COMBO EMERGENCY/EXIT |
| LB | 14 | JUNCTION | JUNCTION | TRACK HEAD | 1 | LED (75W SOCKET) | TRACK MT. | 120 | 11 | W/ GREEN CREATIVE LED 12.5PAR30S4DIM/830FL40/B |
| LB2 | 3 | DINING | JUNCTION | 2" BLACK TRACK SECTION | N/A | N/A | SURFACE | 120 | N/A | |
| LB6 | 0 | DINING | JUNCTION | 6" BLACK TRACK SECTION | N/A | N/A | SURFACE | 120 | N/A | |
| LB8 | 0 | DINING | JUNCTION | 8" BLACK TRACK SECTION | N/A | N/A | SURFACE | 120 | N/A | |
| Y | 0 | EXTERIOR LIGHTING | WPLED-10-Y | EXTERIOR WALL PACK BRONZE | 1 | LED | WALL | 120 | 10 | SURFACE MOUNT FIXTURE |
| Y | 0 | EXTERIOR LIGHTING | BESTLIGHT/DBEL BR SGT | EXTERIOR EMERGENCY LIGHT DARK BRONZE | 1 | LED | WALL | 120 | 5 | SURFACE MOUNT FIXTURE |

ALL LIGHT FIXTURES ON LIGHT FIXTURE SCHEDULE FURNISHED BY OWNER AND INSTALLED BY ELECTRICAL CONTRACTOR.
 LIGHTING FIXTURE CONTACTS:
 ACCUSERV EQUIPMENT & SUPPLY
 3865 PRODUCE RD., SUITE #206, LOUISVILLE, KY 40218.
 PHONE: 877-707-7378, FAX: 502-961-0357.

LIGHTING FIXTURE SCHEDULE 4

- PROVIDE ARROWS AND FACES AS INDICATED ON THE DRAWINGS.
- PROVIDE TRACK, END FEEDS, AND COUPLING DEVICES AND CURRENT LIMITERS IN QUANTITIES AS REQUIRED TO FORM THE TRACK LENGTH SHOWN. REFER TO THE PLANS FOR LOCATIONS OF TRACK. REFER TO ARCHITECTURAL REFLECTED CEILING PLANS AND ELEVATIONS FOR EXACT LOCATIONS FOR LIGHTING FIXTURES.
- ELECTRICAL CONTRACTOR SHALL VERIFY ALL FIXTURE LOCATIONS WITH ARCHITECTURAL ELEVATIONS.
- ELECTRICAL CONTRACTOR SHALL INSTALL ALL CEILING MOUNTED LIGHTING FIXTURES IN LOCATIONS AS INDICATED ON THE ARCHITECTURAL REFLECTED CEILING PLAN.
- ALL PENDANT FIXTURES ARE PROVIDED WITH FACTORY INSTALLED 12' CORD AND STRAIN RELIEF FITTINGS. CONNECTION AND CUTTING OF CORD FOR PENDANT FIXTURE MOUNTING SHALL BE ONLY AT UPPER CANOPY.
- FIELD PAINT PENDANT TRACK ADAPTER BLACK. MOUNT FIXTURES AT 58" A.F.F. TO BOTTOM.
- CONFIRM LIGHTING FIXTURE QUANTITIES WITH SUPPLIER.
- ALL CONDUITS ENTERING OR LEAVING COOLER SHALL BE PROVIDED WITH EYS SEAL-OFF FITTING WITH COMPOUND PER NEC 300-(7a).
- CONTRACTOR TO FIELD VERIFY CEILING TYPE AND PROVIDE PROPER MOUNTING HARDWARE.
- ALL INTERIOR LIGHTING CIRCUITS TO BE WIRED THRU THE LIGHTING CONTROL RELAYS. SEE DETAIL 5/E5.0.
- SEE ARCHITECTURAL REFLECTED CEILING PLAN FOR FINISH OF TRIM RING.

LIGHTING GENERAL NOTES 3

- EXHAUST HOOD LIGHTS PROVIDED WITH HOOD AND INSTALLED BY E.C.
- PROVIDE 120V, 1P/20 AMP WALL SWITCH FOR LOCAL LIGHT CONTROL. MOUNT AT 48" AFF.
- PROVIDE 120V, 1P/20 AMP WALL SWITCH AT 37" AFF FOR CONTROL OF FRONT OF HOUSE SIGNAGE. CONTRACTOR SHALL PROVIDE ENGRAVED LABEL AT EACH SWITCH IDENTIFYING USE. SEE DETAIL 18 ON SHEET E5.0 FOR ADDITIONAL INFORMATION.
- EMERGENCY (BATTERY PACK), EMERGENCY LIGHTS, AND EXIT LIGHTING FIXTURES TO BE CIRCUITED ON UNSWITCHED LEG OF CIRCUIT SWITCH ON PLAN. PROVIDE WITH LOCK-ON BREAKERS.
- LIGHTING FIXTURES AND SWITCHES FOR COOLER/FREEZER ARE PROVIDED WITH COOLER/FREEZER. FIXTURES AND SWITCHES ARE TO BE INSTALLED BY ELECTRICAL CONTRACTOR PER MANUFACTURER'S REQUIREMENTS AND N.E.C. ARTICLE 300-7. CONTRACTOR TO PROVIDE LAMPS FOR COOLER AND FREEZER FIXTURES.
- RESTROOM (DUAL-SENSOR) OCCUPANCY SENSOR AND POWER SUPPLY, E.C. TO PROVIDE JUNCTION BOX ABOVE CEILING FOR POWER SUPPLY (MOUNT IN AN ACCESSIBLE LOCATION). PROVIDE 'DOME' STYLE SENSOR SURFACE MOUNTED ON THE CEILING FOR THE BEST POSSIBLE COVERAGE AREA. CIRCUIT SHOWN, AHEAD OF LOCAL SWITCHING.
- EXISTING EXTERIOR LIGHTING TO REMAIN.
- PROVIDE CURRENT LIMITER PER MANUFACTURER SPECIFICATION WITH WATTAGE SHOWN.
- PROVIDE TIME SWITCH, EXTERIOR PHOTOCELL SENSOR AND LIGHTING CONTACTORS AS SHOWN IN DETAILS 5 AND 7 ON SHEET E5.0. MOUNT TIME SWITCH AND LIGHTING CONTACTORS ADJACENT TO PANELBOARD 'B' AND MOUNT EXTERIOR PHOTOCELL SENSOR ON ROOF PER MANUFACTURER LITERATURE. REFER TO KEYNOTE R6 ON SHEET E1.0 FOR MORE INFORMATION.

LIGHTING KEY NOTES 2