

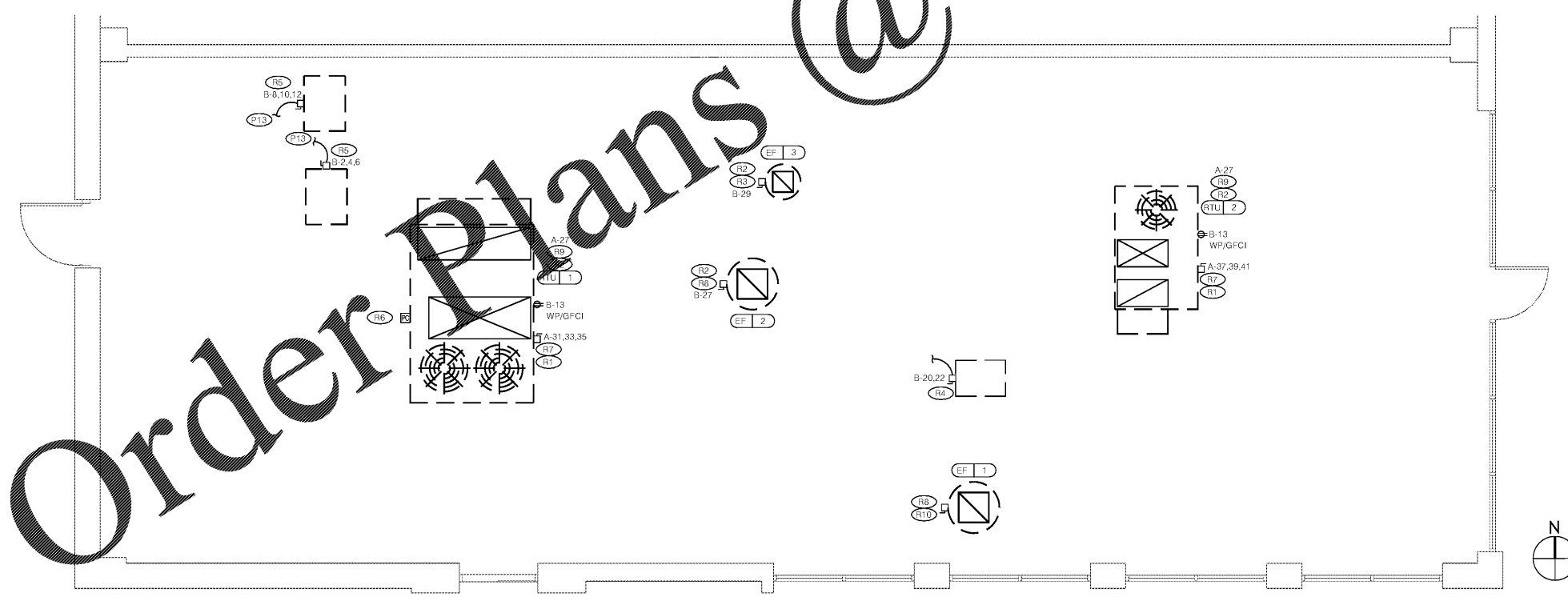
POWER PLAN 1/4"=1'-0" 6

- A. ALL RECEPTACLES SHALL BE INSTALLED 18" AFF UNLESS NOTED OTHERWISE.
- B. ALL CONDUIT DROPS ARE INSIDE WALLS U.N.O. SEE ARCH DWGS FOR WALL DIMS.
- C. ALL J-BOX CIRCUITS, CONDUITS, FIXTURES, ETC SHALL BE AS INDICATED ON THE ELECT DWGS AND SPECS.
- D. CONTRACTOR TO VERIFY UNDERGROUND CONDUIT LOCATIONS PRIOR TO POURING SLAB.
- E. IT IS THE RESPONSIBILITY OF THE CONTRACTOR TO COORDINATE THIS DATA ON THE LOCATION OF ELECT ROUGH-INS WITH INFO PROVIDED ON THE ARCH AND STRUCT DWGS AND THE EQUIPMENT ACTUALLY SUPPLIED, AND TO CONFIRM THE CORRECTNESS OF ANY DIMENSIONS HEREIN.
- F. LOCATIONS OF ALL OUTLETS MAY BE RELOCATED TO NEAREST STUD. DO NOT CUT INTO STUDS.
- G. FOR EXACT LOCATIONS OF KITCHEN & MECHANICAL EQUIPMENT AND POINTS OF CONNECTION, REFER TO KITCHEN & MECHANICAL EQUIPMENT DRAWINGS AND MANUFACTURER'S SHOP DRAWINGS.
- H. ALL CIRCUIT FEEDERS AND DISCONNECTS SHALL BE SIZED BY NEC.
- I. VERIFY CIRCUIT BREAKER, DISCONNECT SWITCH STARTER AND FUSE SIZES WITH SELECTED EQUIPMENT MANUFACTURER'S SHOP DRAWINGS. REFER TO PLUMBING ORDER AND PROVIDE EVERYTHING AS REQUIRED.
- J. ELECTRICAL EQUIPMENT ENCLOSURES SHALL BE NEMA 3R FOR INTERIOR AND NEMA 3R FOR EXTERIOR UNLESS OTHERWISE NOTED. THE STANDARD FOR OUTLETS SHALL BE NEMA-4X.
- K. PER SECTION 210.8(B) NEC 2011, 200V AND 20A, 120V RECEPTACLES IN COMMERCIAL KITCHENS REQUIRED TO BE GFCI PROTECTED.
- L. ALL CONNECTIONS AND ELECTRICAL EQUIPMENT LISTED IN SCHEDULE SHALL BE PROVIDED AND INSTALLED BY THE ELECTRICAL CONTRACTOR. FIELD VERIFY CONNECTION REQUIREMENTS AND EQUIPMENT PROVIDED BY OTHERS PRIOR TO ROUGH-IN.
- M. REFER TO MECHANICAL DRAWINGS AND SPECIFICATIONS FOR THE REQUIREMENTS ASSOCIATED WITH WIRING AND CONNECTIONS OF INTERLOCKING, THERMOSTAT LOCATIONS, EXHAUST FAN CONTROL SWITCHES, AND OTHER CONTROLS OF MECHANICAL EQUIPMENT.
- N. PROVIDE DUCT MOUNTED SMOKE DETECTORS IN THE SUPPLY DUCT. VERIFY THE REQUIRED QUANTITY OF DUCT SMOKE DETECTORS FOR EACH UNIT WITH DUCTWORK LAYOUT TO MEET NFPA REQUIREMENTS.

- P1 PROVIDE 20A, 120V DUPLEX ISOLATED GROUND RECEPTACLE FOR TELEPHONE TERMINAL BOARD. COORDINATE W/ UTILITY.
- P2 1/2" C, WITH REOD CONDUCTORS TO J-BOX IN ABOVE ICE BIN. MAKE CONNECTION TO ICE MACHINE AND CONDENSING UNIT ABOVE BIN.
- P3 CIRCULATION PUMP TO BE POWERED AND CONTROLLED BY TIME CLOCK PROVIDED BY ELECTRICAL CONTRACTOR.
- P4 J-BOXES FOR PIZZA HUT SIGNAGE. COORDINATE EX REQUIREMENTS AND LOCATION WITH SIGN VENDOR PRIOR TO ROUGH-IN.
- P5 LOCAL WP 1P/20A CIRG BREAKER OR DISC SWITCH. MEANS: MTG @ 18" AFF AND SEAL WITH FLEX CONDUIT.
- P6 PROOFER - 20A, 1P, 120V, NEMA 5-20 RECEPTACLE AND STAINLESS STEEL COVER PLATE.
- P7 XLT ELECTRICAL BOX LOCATED ON THE REAR OF MAIN CANOPY WITH THREE 120VAC, 30 AMP AND ONE (1) 200 VAC, 1 PHASE, 6 AMP DISCONNECT. Ovens and VFD CONVEYER RESPECTIVELY. THE ELECTRICAL BOX WILL CONTAIN (1) 200 VAC, 1 PHASE VARIABLE FREQUENCY POWER FOR EXHAUST FAN, (2) RECEPTACLES FOR Ovens AND (1) 120 VAC FIRE ALARM SIGNAL FOR HOOD. REFER TO MANUFACTURER FOR EXACT REQUIREMENTS.
- P8 PROVIDE JUNCTION BOX AND ASSOCIATED 120V, 1P/20 AMP CIRCUIT MOUNTED ABOVE CEILING FOR CONNECTION TO WALK-IN COOLER, FREEZER HEAT-TRACE AND DEFROST. PROVIDE SEALED FITTINGS INSIDE COOLER/FREEZER.
- P9 DEDICATED CIRCUIT FOR SECURITY SYSTEM POWER. PROVIDE LOCK-ON CLIP AT CIRCUIT BREAKER.
- P10 ALL SIGNAGE SHALL BE CIRCUITED THROUGH EXTERIOR LIGHTING CONTACTOR/PHOTOCELL CONTROL PANEL. SEE DETAIL 5 ON SHEET E5.0 FOR ADDITIONAL INFORMATION.
- P11 COOLER / FREEZER EVAPORATOR UNIT. PROVIDE DISCONNECT IN NEMA 3R ENCLOSURE SIZE PER EQUIPMENT NAME PLATE.
- P12 PROVIDE JUNCTION BOX AND ASSOCIATED 120V, 1P/20 AMP CIRCUIT MOUNTED ABOVE CEILING FOR CONNECTION TO LIGHTING FIXTURES IN WALK-IN COOLER AND FREEZER. SEE DETAIL 1 SHEET E1.0 FOR MORE INFORMATION.
- P13 INSTALL CONTROL CABLE FROM FREEZER/COOLER FAN COIL TO ROOF MOUNTED CONDENSER.
- P14 PROVIDE SHOW WINDOW RECEIPTACLE. RECEIPTACLE TO BE MOUNTED FLUSH IN CEILING IF CEILING IS WITHIN 18" FROM THE TOP OF THE WINDOW, OR ON THE WALL ABOVE THE WINDOW IF THERE IS MORE THAN 18" TO THE CEILING ABOVE.
- P15 MOUNT RECEIPTACLE 6" ABOVE COUNTER. VERIFY EXACT LOCATION WITH OWNER PRIOR TO ROUGH-IN. CONFIRM RECEIPTACLE COLOR WITH ARCHITECT.
- P16 PRESENCE ALERT SYSTEM W/ LOOP DETECTOR. FIELD VERIFY REQUIREMENTS. INSTALL PER MANUFACTURER'S REQUIREMENTS. SEE DETAIL 1 ON SHEET E6.0 FOR ADDITIONAL INFORMATION.
- P17 E.C. TO PROVIDE J- BOX FOR LED LIGHTING LOCATED ON PARAPET. SIGNAGE VENDOR TO PROVIDE LED STRIP, POWER SUPPLY, AND ALL ACCESSORY NEEDED FOR A COMPLETE SYSTEM. COORDINATE W/ SIGN VENDOR FOR EXACT LOCATION AND REQUIREMENTS PRIOR TO ROUGH-IN.
- P18 PICK UP WINDOW MAGNETIC LOOP DETECTOR SYSTEM. FIELD VERIFY REQUIREMENTS. INSTALL PER MANUFACTURER'S REQUIREMENTS. SEE DETAIL 1 ON SHEET E6.0 FOR ADDITIONAL INFORMATION.

POWER PLAN GENERAL NOTES 5

POWER PLAN KEY NOTES 4



ROOF POWER PLAN 1/4"=1'-0" 3

- A. NO CONDUIT SHALL BE FASTENED DIRECTLY TO OR THROUGH A ROOFING MEMBRANE.
- B. ALL CUTS IN ROOFING MEMBRANE SHALL BE MINIMAL AND IN ACCORDANCE WITH ROOFING MFR'S AND INSTALLER'S REQS.
- C. REFER TO MECH DWGS FOR MECHANICAL EQUIPMENT ELECTRICAL REQS.
- D. ALL EXPOSED ELECTRICAL CONDUITS SHALL PENETRATE ROOF D. MEMBRANE AT PIPE HOODS U.N.O.
- E. REFER TO ELECT EQUIP SCHEDULE AND ELECT ROUGH-IN PLAN.
- F. ALL CONDUITS FROM EXHAUST FANS SHALL BE ROUTED INSIDE OF CURB.
- G. ALL CONDUITS TO AND FROM RTU SHALL BE ROUTED INSIDE OF CURB. COORDINATE WITH RTU MFR RECOMMENDATIONS.
- H. ALL WIRING AND CONDUITS SHALL BE CONCEALED. NO CONDUITS ARE PERMITTED TO RUN EXPOSED ACROSS ROOF DECK. ROUTE ALL CONDUITS THROUGH EQUIPMENT ROOF CURBS OR ARCHITECT SPECIFIED ROOF PENETRATIONS.

- R1 SPECIFIED TRANE RTU IS SUPPLIED WITH THRU THE BASE ELECTRICAL CONNECTIONS AND FACTORY INSTALLED HACR CIRCUIT BREAKER WITH WEATHER TIGHT ENCLOSURES AND ACCESS THRU SWINGING DOOR.
- R2 POWER AND CONTROL ENTRY FROM BOTTOM OF UNIT.
- R3 ROUTE EXHAUST FAN THROUGH INTERIOR LIGHTING TIME CLOCK. PROGRAM EXHAUST FAN TO OPERATE DURING OCCUPIED HOURS. REFER TO DETAIL 7 ON SHEET E5.0
- R4 PROVIDE A 20BV, 1-PHASE, 30 AMP DISCONNECT FOR THE ICE MAKER CONDENSING UNIT LOCATED ABOVE ICE BIN. INTERLOCK WITH ICE MAKER PER MANUFACTURER'S SPECIFICATION.
- R5 COOLER / FREEZER CONDENSING UNIT ON ROOF. PROVIDE DISCONNECT IN NEMA 3R ENCLOSURE SIZE PER EQUIPMENT NAME PLATE.
- R6 MOUNT PHOTOCELL ON NORTH SIDE OF RTU-1. CONNECT TO EXTERIOR LIGHTING CONTROL PANEL.
- R7 RTU SHALL BE PROVIDED WITH BUILT-IN FUSED DISCONNECT, SINGLE POINT WIRING AND CONVENIENCE OUTLET. OUTLET TO BE WIRED SEPARATE FROM RTU. CIRCUIT AS SHOWN.
- R8 PROVIDE LOCAL DISCONNECT SWITCH IN NEMA 3R ENCLOSURE FOR HOOD EXHAUST FAN LOCATED ON ROOF.
- R9 PROVIDE CONNECTION FROM RETURN AIR DUCT SMOKE DETECTORS TO MECHANICAL CONTROL CIRCUIT PER DETAIL 2/E5.0, AND FIRE ALARM SYSTEM (IF PRESENT). PROVIDE A RELAY TO SHUT DOWN HVAC EQUIPMENT UPON ACTIVATION OF DUCT DETECTOR OR FIRE ALARM SYSTEM (IF PRESENT).
- R10 POWER AND CONTROL ENTRY FROM BOTTOM OF UNIT. EXHAUST FAN INTERLOCKED WITH XLT PIZZA OVEN ELECTRICAL BOX. POWER AND CONTROL ENTRY FROM BOTTOM OF UNIT. EXHAUST FAN INTERLOCKED WITH XLT PIZZA OVEN ELECTRICAL BOX. REFER TO KEYNOTE P7 FOR MORE INFORMATION.

ROOF POWER PLAN GEN. NOTES 2

ROOPOWER PLAN KEY NOTES 1

Order Plans @

WWW.LDNLIVING.COM

08/10/18
 1845
 DRAWN: BH, MJ, SO
 CHECKED: AR, CF
 ACC #: 1820228

POWER/ROOF PLAN

FRANCHISEE

ACERTUS CONSULTING GROUP, LLC
 14817 West 58th Street • Lenexa, Kansas 66215
 P 913.322.5150 • F 913.322.5155
 www.AcertusGroup.com

PIZZA HUT #1845
 5229 US HWY 231
 WETUMPKA, ALABAMA

ALABAMA LICENSED PROFESSIONAL ENGINEER
 No. 28520-E
 BRADLEY M. MESSNER

10/09/18

SHEET NUMBER
E1.0