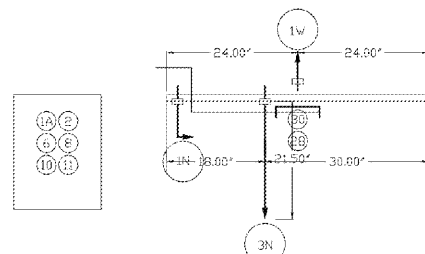
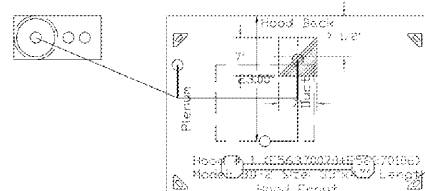


Fire System Information - Job#3552594

FIRE SYSTEM NO.	TAG	TYPE	SIZE	FLOW POINTS	INSTALLATION	
					SYSTEM	LOCATION ON HOOD
1	E56370036	Ansul R102	1.5	5	Wall Mount Left	N/A

Fire System Parts List Key

FIRE SYSTEM NO.	TAG	KEY NUMBER - PART DESCRIPTION	QTY. BY FACTORY	QTY. BY DIST.
		0 - 0 - METAL CAP - 3" BLOWOFF CAP - Metal	3	0
		1 - 1 - AT - 1.5 TANK(HIA) - 1.5 Gallon SS Tank (For use with Automan Release, Actuator, or SS Enclosure (UL/ULC) Macola # 02-429864	0	1
		2 - 2 - AP - AR AUTOMAN RELEASE - Ansul Automan Mechanical Release (UL) Tank sold separately. Ansul Part # 429853; Macola # 01-429853	0	1
		6 - 6 - LIQ-1.5 AGENT - Ansulux Low PH Wet Chemical Agent, 1.5 Gallon (UL) 79694	0	1
		8 - 8 - 101-10 CARTRIDGE - Carbon Dioxide, 101-10, 1.5 Gallon Cartridge (R-102, PIRANHA)	0	1
		10 - 10 - TLINK LINK - Test Link (1 Test Link) Ansul Part # 24916; Macola # 20-24916	0	1
		13 - 13 - MICRO-SDA MICROSWITCH KIT - Includes 2 switches and Mounting Hardware, Single Dual Electric Switch, One Standard Switch, One Alarm Duty Switch Ansul Part # 437153; Macola # 08-437153	0	1
		14 - 14 - 419336 NOZZLE - 1" Nozzle, Buct/Appliance (Replaces ANSUL Part# 419347, CAS Part# 419336) A9001266	1	0
		16 - 16 - 419335 NOZZLE - 1" Nozzle, Plenum/Appliance (Replaces ANSUL Part# 419346, CAS Part# 419335) A9001265	1	0
		19 - 19 - 419338 NOZZLE - 3" Nozzle, Appliance (Replaces ANSUL Part# 419349, CAS Part# 419338) A9001268	1	0
		26 - 26 - OSA-3/8 O-RING SEAL - 3/8" (UL)	3	0
		27 - 27 - OSA-1/2 PULLEY SEAL - 1/2" Hood Seal (UL) Ansul Part # 423253; Macola # 32-79768	1	0
		28 - 28 - S-BET DETECTOR - Series (Scissor Linkage) Ansul Part # 435547/435548 (Bid # 417369/434400) Macola # 05-417369	1	0
		30 - 30 - ANS-300FL FUSIBLE LINK - 500deg F, R-102 and PIRANHA, Ansul Part # 439232	1	0
		34 - 34 - RPS-A REMOTE PULL STATION - Red composite (without wire rope) 434618 (Bid Macola #36-4835)	0	1
		35 - 35 - PE-LT PULLEY ELBOW - Low Temp. Pulley Elbow, Set Screw Type Ansul Part # 415670; Macola # 11-415671	0	10
		36 - 36 - PE-HT PULLEY ELBOW - High Temp Pulley Elbow, Compression Type, Ansul Part # 423251; Macola # 10-45771	1	0

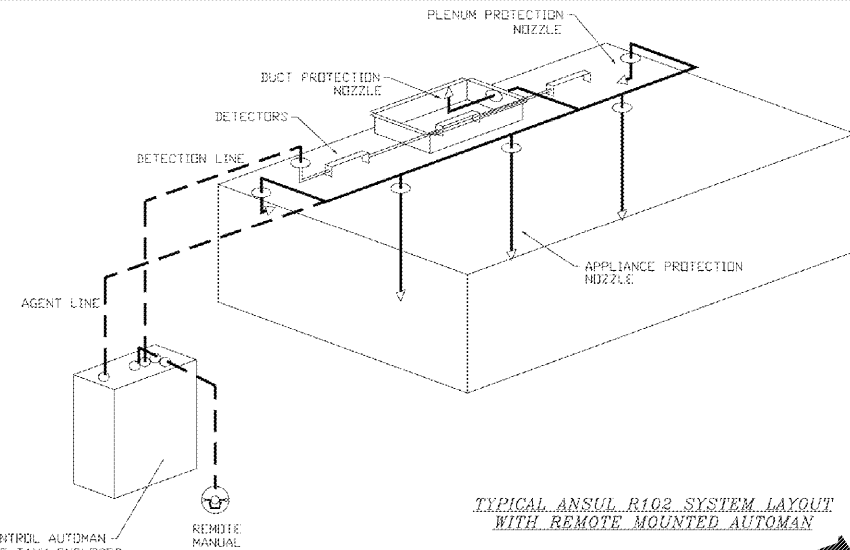


NOTES  
 - FIELD PIPE DROPS AS SHOWN  
 - SLEEVING, ELBOWS, TEES, AND NOZZLES SUPPLIED BY CAS  
 - RELOCATE NOZZLES IF FLOW PATTERN IS BLOCKED BY SHELVING, SALAMANDERS, ETC.  
 - MAXIMUM 9 ELBOWS IN SUPPLY LINE.  
 - MINIMUM 72 INCHES OF AGENT LINE FROM TANK TO FIRST NOZZLE.  
 - IF APPLICABLE, PRE-PIPED CHARBROILER DROPS ARE SHIPPED LOOSE.  
 - FACTORY PIPING EXTENDS A MAXIMUM OF 6' ABOVE THE TOP OF THE HOOD.  
 - APPLIANCE DIMENSIONS LISTED REPRESENT THE COOKING SURFACE SIZE, NOT THE OVERALL APPLIANCE SIZE.  
 - THIS FIRE SYSTEM COMPLIES WITH UL 300 REQUIREMENTS

Job #: 3552594  
 Job Name: Pizza Hut NPC 4 Wetumpka AL #1845  
 Drawn By:  
 System Size: ANSUL-1.5 Total FP required: 5  
 Hood # 1 Size: 7' x 7'  
 Riser # 1 Size: 7' x 7'  
 Hood # 1 Metal Blow-Off Caps included.

LEGEND - WALL MOUNTED ANSUL SYSTEM

- 1A 1.5 GALLON TANK
- 1B 3.0 GALLON TANK
- 2 AUTOMAN RELEASE
- 3 3 GALLON TANK ENCLOSURE
- 3A 6 GALLON TANK ENCLOSURE
- 4 REGULATED ACTUATOR
- 5 ANSULEX LIQUID AGENT (3 G)
- 6 ANSULEX LIQUID AGENT (1.5 G)
- 7 CARTRIDGE (101-20)
- 8 CARTRIDGE (101-10)
- 9 CARTRIDGE (101-30)
- 9A CARTRIDGE (LT-A-10)
- 9B DOUBLE TANK CARTRIDGE
- TEST LINK
- DOUBLE CROSSEY
- DUCT NOZZLE (419337)
- NOZZLE ASSEMBLY (419336)
- NOZZLE ASSEMBLY (419333)
- NOZZLE ASSEMBLY (419335)
- NOZZLE ASSEMBLY (419334)
- NOZZLE ASSEMBLY (419338)
- NOZZLE ASSEMBLY (419340)
- 245 NOZZLE ASSEMBLY (419339)
- 230 NOZZLE ASSEMBLY (419343)
- 2120 NOZZLE ASSEMBLY (419342)
- 290 NOZZLE ASSEMBLY (419341)
- 260 NOZZLE ASSEMBLY (419341)
- 28 DETECTOR BRACKET
- 29 LOW TEMP FUSIBLE LINK
- 30 HIGH TEMP FUSIBLE LINK
- MGV MECHANICAL GAS VALVE
- EGV ELECTRICAL GAS VALVE
- 34 REMOTE MANUAL PULL STATION
- S SWIVEL ADAPTOR



TYPICAL ANSUL R102 SYSTEM LAYOUT WITH REMOTE MOUNTED AUTOMAN

Job #: 3552594  
 Job Name: Pizza Hut NPC 4 Wetumpka AL #1845  
 Drawn By:  
 System Size: ANSUL-1.5 Total FP required: 5  
 Hood # 1 Size: 7' x 7'  
 Riser # 1 Size: 7' x 7'

NOTES  
 - FIELD PIPE DROPS AS SHOWN  
 - SLEEVING, ELBOWS, TEES, AND NOZZLES SUPPLIED BY CAS  
 - RELOCATE NOZZLES IF FLOW PATTERN IS BLOCKED BY SHELVING, SALAMANDERS, ETC.  
 - MAXIMUM 9 ELBOWS IN SUPPLY LINE.  
 - MINIMUM 72 INCHES OF AGENT LINE FROM TANK TO FIRST NOZZLE.  
 - IF APPLICABLE, PRE-PIPED CHARBROILER DROPS ARE SHIPPED LOOSE.  
 - FACTORY PIPING EXTENDS A MAXIMUM OF 6' ABOVE THE TOP OF THE HOOD.  
 - APPLIANCE DIMENSIONS LISTED REPRESENT THE COOKING SURFACE SIZE, NOT THE OVERALL APPLIANCE SIZE.  
 - THIS FIRE SYSTEM COMPLIES WITH UL 300 REQUIREMENTS

SPECIFICATIONS

THE RESTAURANT FIRE SUPPRESSION SYSTEM SHALL BE THE PRE-ENGINEERED TYPE WITH A FIXED NOZZLE AGENT DISTRIBUTION NETWORK. IT SHALL BE LISTED WITH UNDERWRITERS LABORATORIES, INC. (UL).  
 THE SYSTEM SHALL BE CAPABLE OF AUTOMATIC DETECTION AND ACTUATION WITH LOCAL OR REMOTE MANUAL ACTUATION. ACCESSORIES SHALL BE AVAILABLE FOR MECHANICAL OR ELECTRICAL GAS LINE SHUT-OFF APPLICATIONS.  
 THE EXTINGUISHING AGENT SHALL BE A POTASSIUM CARBONATE, POTASSIUM ACETATE-BASED FORMULATION DESIGNED FOR FLAME KNOCKDOWN AND SECUREMENT OF GREASE RELATED FIRES. IT SHALL BE AVAILABLE IN PLASTIC CONTAINERS WITH INSTRUCTIONS FOR LIQUID AGENT HANDLING AND USAGE.  
 THE REGULATED RELEASE MECHANISM SHALL BE COMPATIBLE WITH A FUSIBLE LINK DETECTION SYSTEM. THE FUSIBLE LINK SHALL BE SELECTED AND INSTALLED ACCORDING TO THE OPERATING TEMPERATURE IN THE VENTILATING SYSTEM. THE FUSIBLE LINK SHALL BE SUPPORTED BY A DETECTOR BRACKET/LINKAGE ASSEMBLY.

Order Plans @

WWW.CAPTIVELINE.COM

REVISIONS

NO.	DESCRIPTION	DATE

Pizza Hut NPC 4 Wetumpka AL #1845  
 WETUMPKA, AL

DATE: 9/19/2018  
 DWG.#: 3552594  
 DRAWN BY: BJL-45  
 SCALE: 3/4" = 1'-0"  
 MASTER DRAWING

SHEET NO. 2

08/10/18 1845  
 DRAWN: BH, MJ, SO  
 CHECKED: AR, CF  
 ACC #: 182028

HOOD DWGS.

PIZZA HUT  
 INTERNATIONAL  
 7300 W. 129TH STREET  
 OVERLAND PARK, KANSAS  
 66213  
 PHONE: (913) 327-5555  
 FAX: (913) 327-5850

PIZZA HUT #1845  
 5229 US HWY 231  
 WETUMPKA, ALABAMA

FOR REFERENCE ONLY

SHEET NUMBER  
**M3.1**