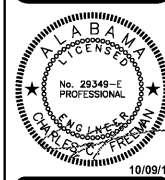


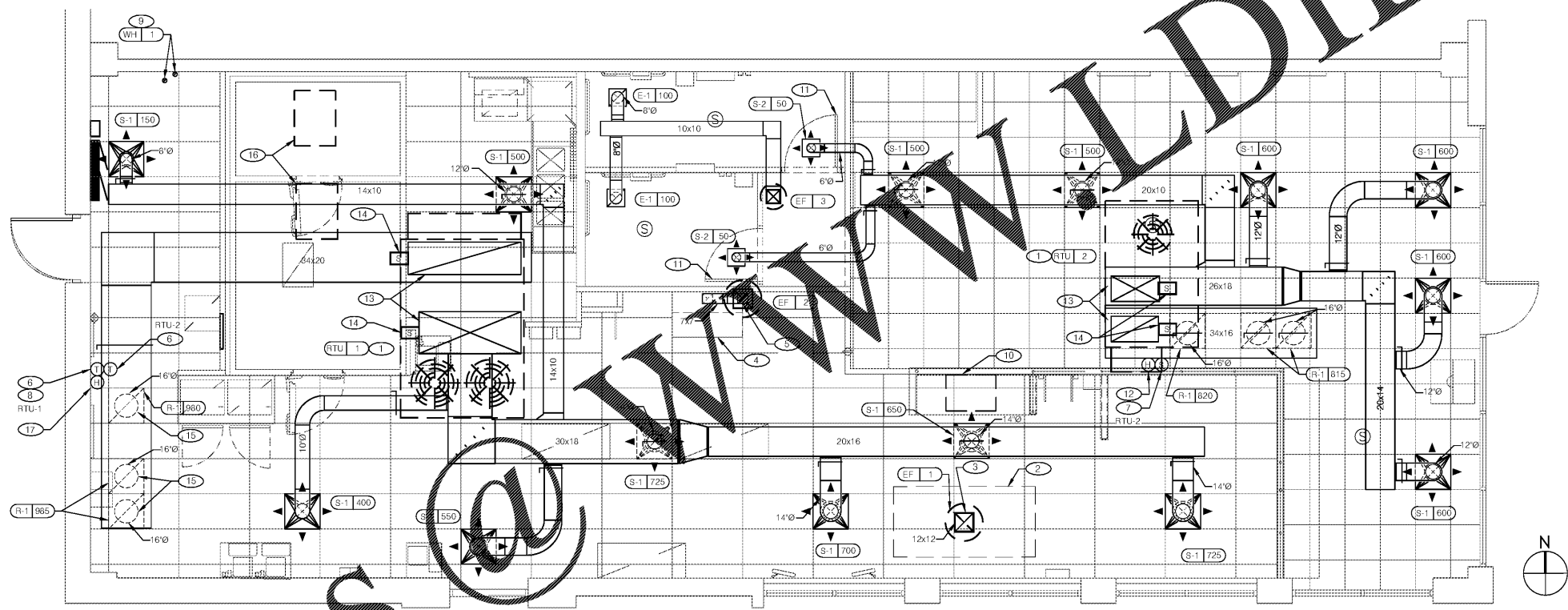


PIZZA HUT #1845
 5229 US HWY 231
 WETUMPKA, ALABAMA

ACERTUS CONSULTING GROUP, LLC
 14817 West 55th Street • Lenexa, Kansas 66215
 P 913.322.5150 • F 913.322.5155
 www.AcertusGroup.com



REVISIONS:
 SHEET NUMBER
M2.0



HVAC PLAN 1/4"=1'-0" 1

Order Plans

- GENERAL NOTES** 3
- A. DINING ROOM LIGHT FIXTURE LOCATIONS ARE CRITICAL. COORDINATE DUCTWORK LOCATIONS SO AS NOT TO CONFLICT WITH LIGHT FIXTURE LOCATIONS.
 - B. DIFFUSERS INSTALLED IN THE EXPOSED STRUCTURE AREAS SHALL BE MOUNTED FLUSH TO THE BOTTOM CHORD OF THE TRUSSES.
 - C. DIFFUSERS LOCATED AROUND PERIMETER OF CANOPY-TYPE KITCHEN HOODS SHALL BE DIRECTED AWAY FROM THE HOOD. REFER TO PLAN FOR BLOW PATTERN INDICATIONS.
 - D. ALL EXPOSED DUCTWORK TO BE INTERNALLY LINED AND PAINTED AS SHOWN ON ARCHITECTURAL DRAWINGS. ALL OTHER DUCTWORK SHALL BE INSULATED PER THE SPECIFICATIONS.

- 1 RTU UNIT, VERIFY UNIT LOCATION AND SUPPORT WITH BUILDING STRUCTURE. G.C. REFER TO STRUCTURAL. SET OUTSIDE AIR ON RTU AS SCHEDULED ON SHEET M1.0. MAINTAIN WORKING CLEARANCES PER MANUFACTURER'S INSTALLATION INSTRUCTIONS.
- 2 8'-0" x 4'-0" TYPE I PIZZA OVEN EXHAUST HOOD AND FANS PROVIDED BY OWNER AND INSTALLED BY GC. REFER TO SHEET M3.3 FOR MORE INFO.
- 3 FIELD INSTALL 12"x12" EXHAUST CONNECTION TO HOOD. ROUTE 12"x12", 16 GA. EXTERNAL CONTINUOUSLY WELDED STAINLESS STEEL EXHAUST DUCT FROM OVEN HOOD UP THRU ROOF TO EF-1. MINIMUM 2 HOUR, U.L. LISTED, FIRE RATED BLANKET WRAP UP TO EF-2 ON ROOF. OFFSET DUCT ABOVE AS REQUIRED AND SLOPE DUCT BACK TO HOOD. TRANSITION TO HOOD AND FAN CONNECTIONS AS REQUIRED. PROVIDE AND INSTALL ACCESS DOOR IN DUCT AT EACH CHANGE OF DIRECTION PER CODE.
- 4 4'-0" x 3'-0" TYPE I FRYER HOOD PROVIDED BY OWNER AND INSTALLED BY GC. REFER TO SHEET M3.0 FOR MORE INFO.
- 5 7"x7", 16 GA. WELDED STEEL EXHAUST DUCT WITH MINIMUM 2 HOUR, U.L. LISTED, FIRE RATED BLANKET WRAP UP TO EF-2 ON ROOF. REFER TO SPECIFICATIONS. OFFSET DUCT ABOVE AS REQUIRED AND SLOPE DUCT BACK TO HOOD. TRANSITION TO HOOD AND FAN CONNECTIONS AS REQUIRED. PROVIDE AND INSTALL ACCESS DOOR IN DUCT AT EACH CHANGE OF DIRECTION PER CODE.
- 6 LOCATE THERMOSTAT CONTROLS ON WALL AT 48" A.F.F. COORDINATE WITH EQUIPMENT INSTALLED.

- 7 INSTALL REMOTE TEMPERATURE SENSOR IN RETURN AIR DUCT FOR RTU-2.
- 8 RTU-1 SHALL HAVE A THERMOSTAT WITH NO REMOTE SENSOR.
- 9 FURNISH AND INSTALL 3" DIAMETER FLUE VENT AND 3" DIAMETER INTAKE FROM WATER HEATER AND TERMINATE WITH CONCENTRIC VENT KIT ON ROOF. COORDINATE WORK WITH ALL TRADES. SEE DETAIL 1/P4.0. INSTALL PER MANUFACTURER'S INSTALLATION INSTRUCTIONS.
- 10 REMOTE ICE MACHINE CONDENSING UNIT MOUNTED ON FIELD FABRICATED PLATFORM ON THE ROOF. ROOF PENETRATIONS AND LEVEL SUPPORT BY THE G.C. SEE ARCHITECTURAL ROOF PLAN.
- 11 UNDERCUT RESTROOM DOORS A MINIMUM OF 3/4" FOR MAKE-UP AIR.
- 12 INSTALL REMOTE HUMIDITY SENSOR IN RETURN AIR DUCT FOR RTU-2.
- 13 ROUTE SUPPLY AIR DUCT AND RETURN AIR DUCT UP BETWEEN TRUSSES TRANSITION IN ROOF CURB TO ROOF TOP UNIT AND PROVIDE FLEXIBLE CONNECTION AT CONNECTION TO UNIT.
- 14 SMOKE DETECTORS ARE FACTORY INSTALLED IN THE SUPPLY AND RETURN AIR SECTIONS OF THE RTU. REFER TO ELECTRICAL DRAWINGS FOR ADDITIONAL INFORMATION.

- 15 EXTEND 16"Ø AIR DUCT FROM RETURN GRILLE UP TO RETURN AIR DUCT ABOVE.
- 16 CONDENSING UNITS FOR COOLER/FREEZER MOUNTED ON FIELD FABRICATED PLATFORM ON THE ROOF. ROOF PENETRATIONS AND LEVEL SUPPORT BY THE G.C. SEE ARCHITECTURAL ROOF PLAN.
- 17 INSTALL REMOTE HUMIDITY SENSOR AT 60" A.F.F. FOR RTU-1.

KEY NOTES 2