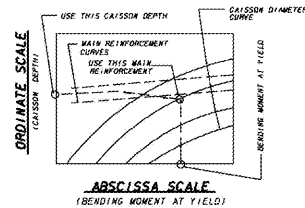
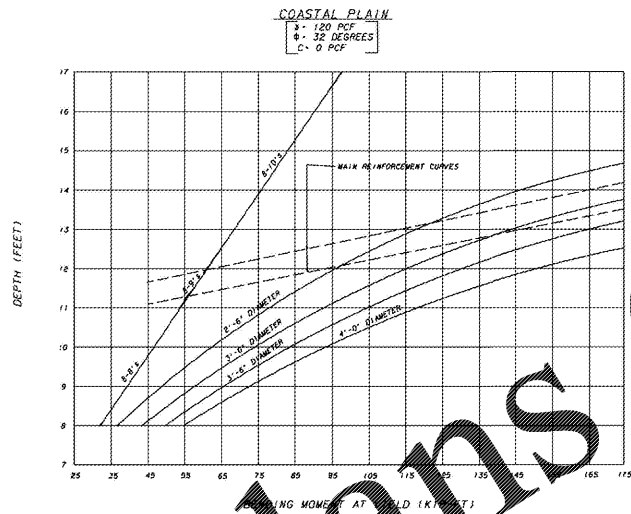
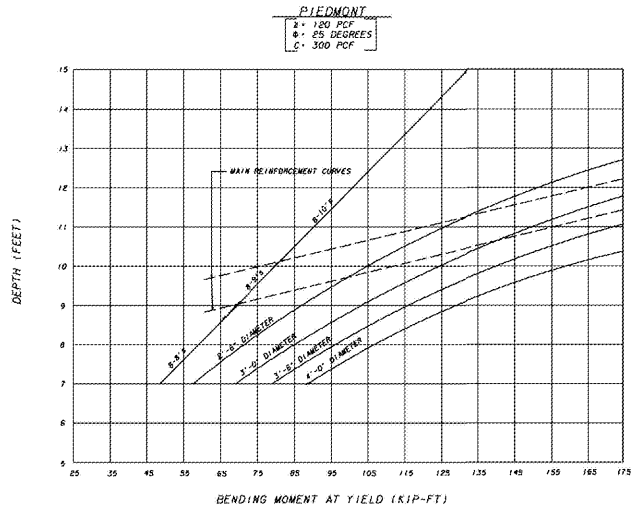


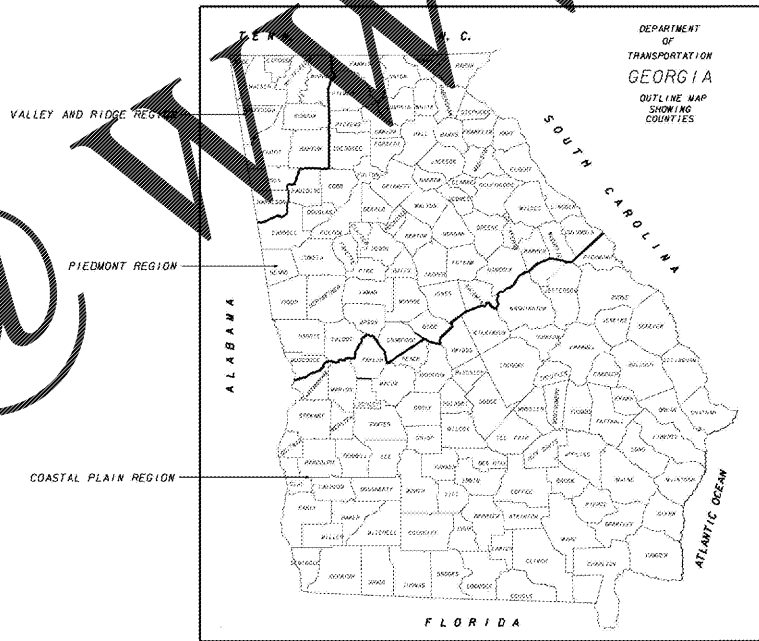
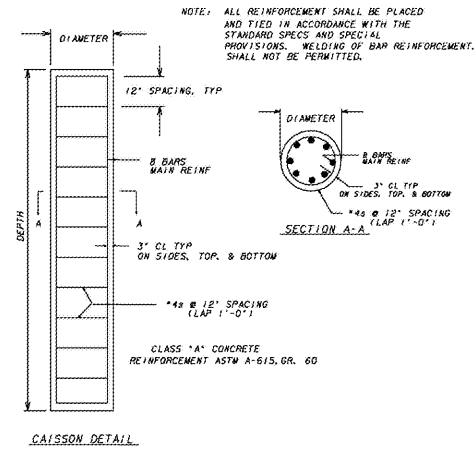
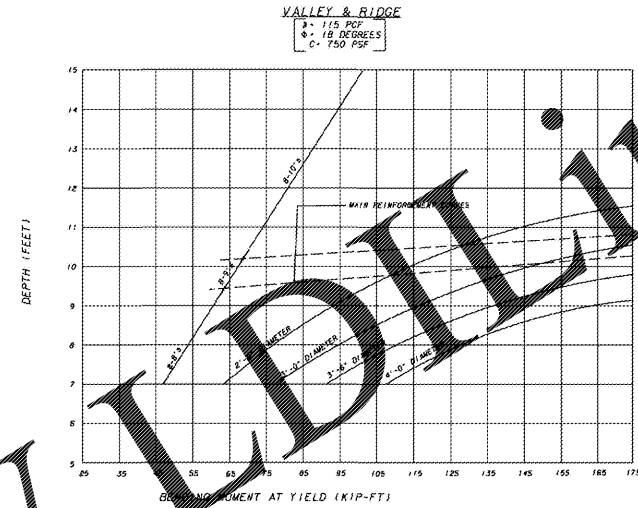
CREATED: 9/25/2018 LAST SAVED: 9/28/2018 BY: WARR, GEOFFREY PLOT DATE: 9/28/2018

STATE	COUNTY	PROJECT NUMBER	SHEET NO.	TOTAL SHEETS
GA.				



PROCEDURE TO FIND FOOTING SIZE

1. DETERMINE "BENDING MOMENT AT YIELD" FROM APPROVED SHOP DRAWINGS
2. SELECT DIAMETER OF CAISSON.
3. READ "BENDING MOMENT AT YIELD" ON ABSCISSA SCALE. PROJECT A VERTICAL LINE UPWARD UNTIL THE DESIRED "CAISSON DIAMETER CURVE" IS INTERSECTED. TURN 90 DEGREES AND PROJECT A HORIZONTAL LINE UNTIL THE ORDINATE SCALE IS INTERSECTED.
4. READ THE REQUIRED "CAISSON DEPTH" FROM THE INTERSECTION POINT ON THE ORDINATE SCALE. DEPTH SHALL BE INTERPOLATED TO THE NEAREST 3 INCH INCREMENT.
5. READ THE REQUIRED "MAIN REINFORCEMENT SIZE" FROM THE INTERSECTION POINT ON THE CAISSON DIAMETER CURVE.



DATE		DEPARTMENT OF TRANSPORTATION STATE OF GEORGIA	
REV. BY:		TRAFFIC SIGNAL DETAIL	
REV. DESCRIPTION		DETAILS OF STRAIN POLE AND MAST ARM FOUNDATIONS	
DATE		DETAIL NUMBER	
APRIL 2010		TS-06	

THIS LINE IS ONE INCH LONG WHEN PLOTTED FULL SCALE			
THIS DRAWING MUST BE USED IN CONJUNCTION WITH THE APPLICABLE OR GOVERNING TECHNICAL SPECIFICATIONS AND OTHER CONTRACT DOCUMENTS.			
PROJECT NO: EGXL0300			
DATE: 07-23-2018			
DWG NAME: SEGLENG RACETRAC CARTERSVILLE 09-25-18.DWG			
DRAWN:	CHECKED:	SCALE:	
KRW	GKW	1" = 30'	
SHEET TITLE			
DETAILS			

ACCESS IMPROVEMENTS / SIGNAL DESIGN
 FOR
 RACETRAC PETROLEUM INC
 3225 Cumberland Blvd, Suite 100
 Atlanta, GA 30339

LOCATED IN LAND LOT 390, 4TH DISTRICT, 3RD SECTION, BARTOW COUNTY, GEORGIA

