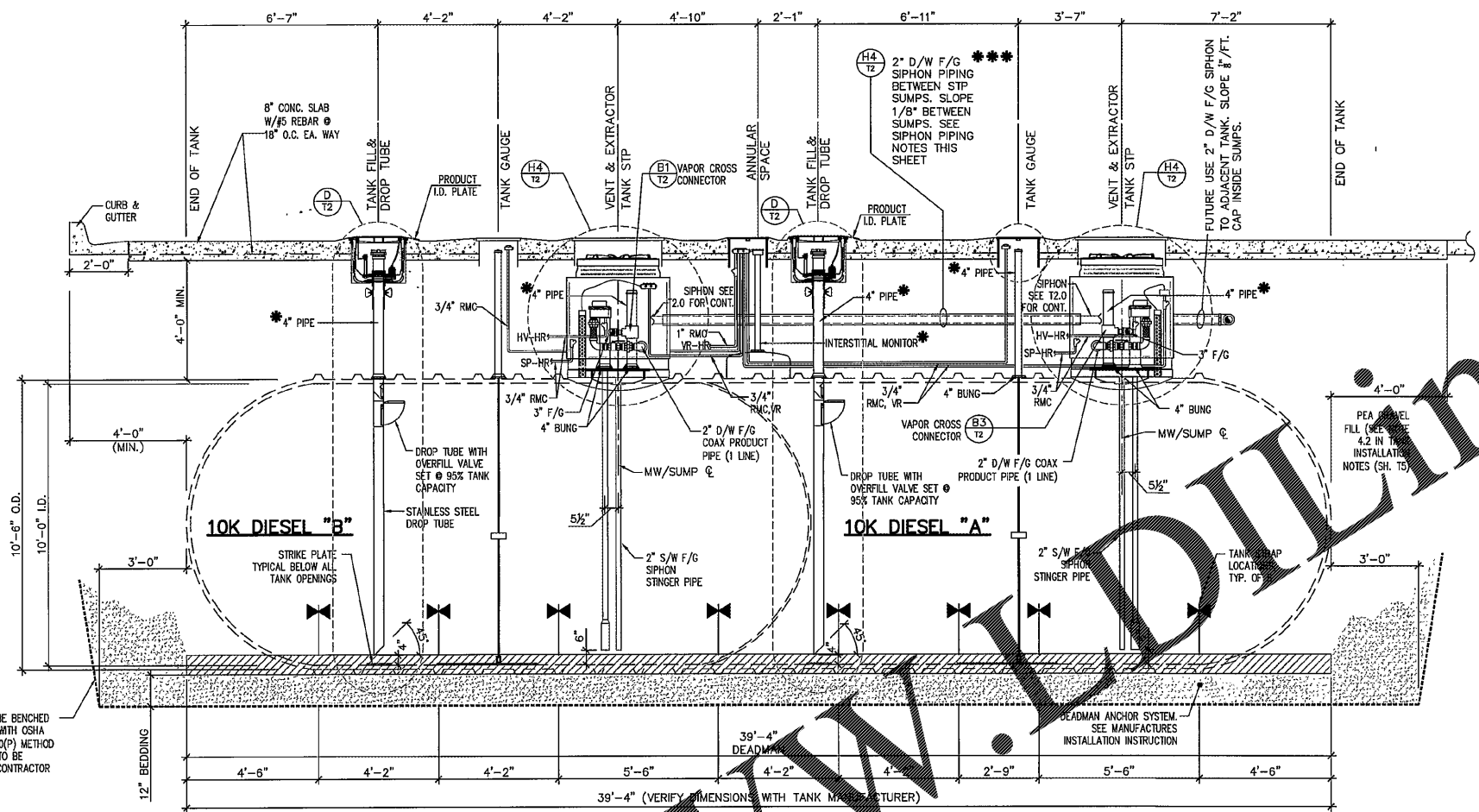
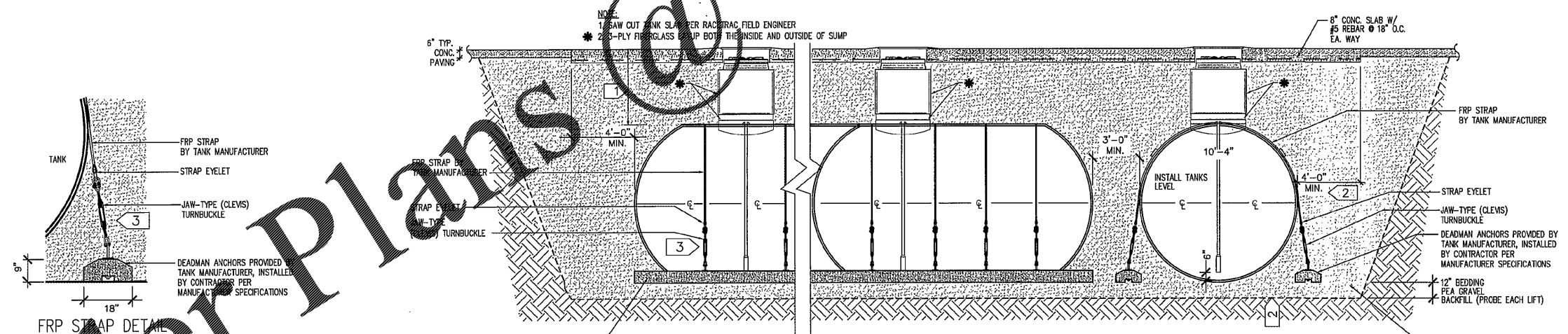


- * ALL RISER PIPES & FITTINGS ARE TO BE COATED WITH A BITUMINOUS COATING AND WRAPPED W/3M TAPE FOR CORROSION PROTECTION---SEE NOTES SHEET RT-T4.0
- ** CONFIRM BURIAL DEPTH WITH RACETRAC PROJECT MANAGER
- *** SIPHON PIPING NOTES:
 1. 2" D/W F/G SIPHON PIPING SLOPED 1/8" PER FT. BETWEEN SUMPS.
 2. SIPHON PIPING INSTALLATION TO BE IN ACCORDANCE WITH API 1615, SECTION 9.2.4 DETAIL SHEET T2.0



EXCAVATION TO BE BENCHMARKED IN ACCORDANCE WITH OSHA 29 CFR 1926-950(P) METHOD OF COMPLIANCE TO BE DETERMINED BY CONTRACTOR

C LONGITUDINAL TANK SECTION
 T1.3 20,000 GALLON TANK 3/8"=1'-0"



- 1 4' MINIMUM COVER. DEPTH TO INCREASE AS REQUIRED TO MAINTAIN 1/8" PER FOOT FALL ON VAPOR RECOVERY LINE FROM ISLAND TO MANIFOLD.
- 2 ALL TANK PITS AND PIPE TRENCHES TO BE LINED WITH FILTER FABRIC CLOTHS AND LAPPED OVER THE TOP OF BURIED TANKS AND PIPES PRIOR TO BACKFILLING.
- 3 UNIFORMLY TIGHTEN EACH ANCHOR STRAP WITH TURNBUCKLES STRAP MUST BE SNUG WITHOUT CAUSING TANK DEFLECTION. CHECK DEFLECTION BEFORE AND AFTER SECURING STRAPS. APPLY HEAVY BITUMINOUS COATING TO TURNBUCKLES AND ATTACHMENTS TO PREVENT CORROSION.

EXCAVATION TO BE BENCHMARKED IN ACCORDANCE WITH OSHA 29 CFR 1926-950(P) METHOD OF COMPLIANCE TO BE DETERMINED BY CONTRACTOR

ISSUE/REVISION RECORD	DESCRIPTION
DATE	

Racetrac
 RACETRAC PETROLEUM, INC.
 3225 CUMBERLAND BOULEVARD
 SUITE 100
 ATLANTA, GEORGIA 30339
 (770) 431-7600

PROJECT NAME
 EAST MAIN ST.

CARTERVILLE GEORGIA
 1325 E. MAIN ST.

RACETRAC PROJECT NUMBER
 1310

PLAN SERIES
 2011 BR-RH-M90 0801

PLAN MODIFICATION NOTICE
 NO MODIFICATIONS APPLIED
 MODIFICATIONS APPLY

STANDARD PLAN BULLETINS (SPB) MODIFY THE PLAN SERIES SET NOTED ABOVE. THE SPB GIVEN ABOVE REPRESENTS THE LATEST MODIFICATION INCORPORATED TO THIS PLAN SERIES SET. CONTACT RACETRAC ENGINEERING AND CONSTRUCTION FOR ALL BULLETINS.

PROFESSIONAL SEAL
 GEORGIA REGISTERED PROFESSIONAL ENGINEER
 RICHARD R. MORRIS
 JUL 18 2008
 GA REG # PE013897

PROJECT NUMBER
 18154

SHEET TITLE
 TANK DETAILS

SHEET NUMBER
 RT-T1.3

Order Plans @ WWW.Engineering.com