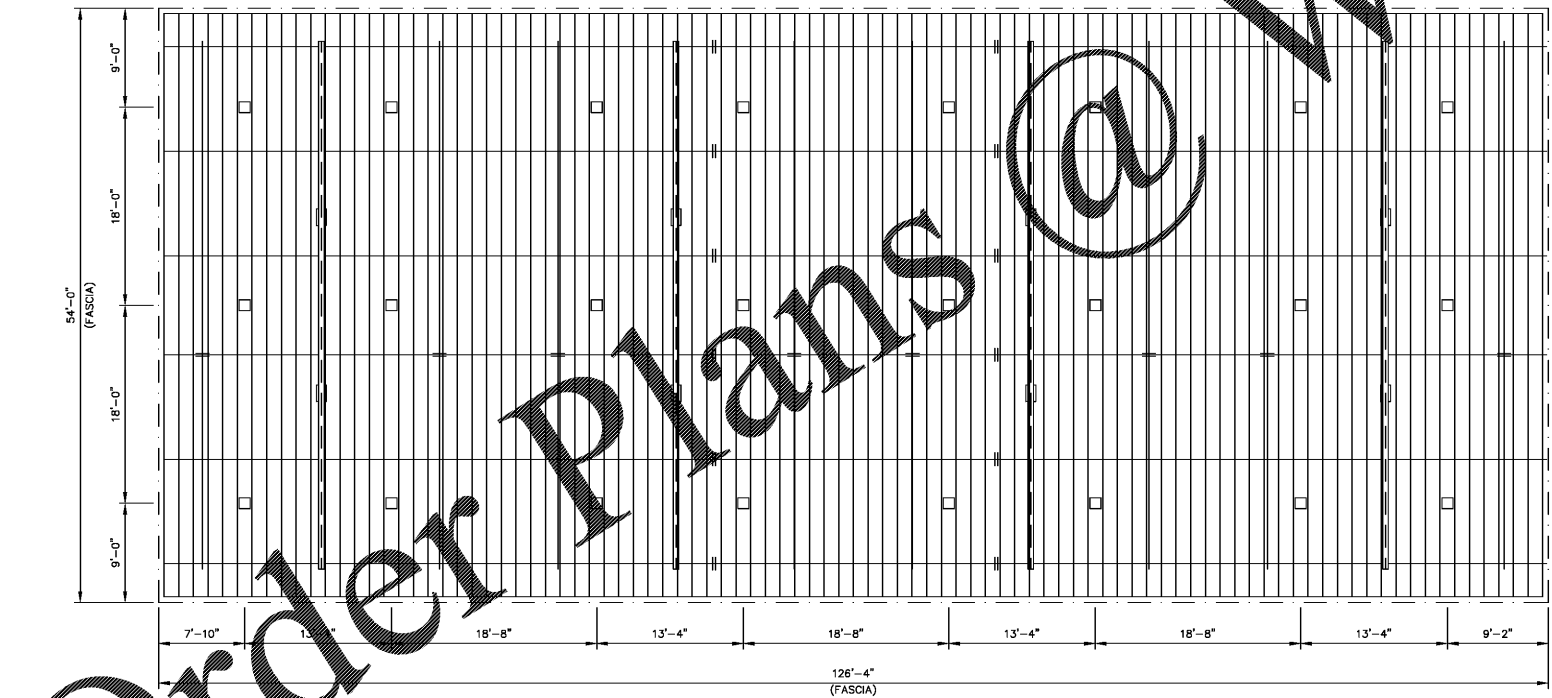
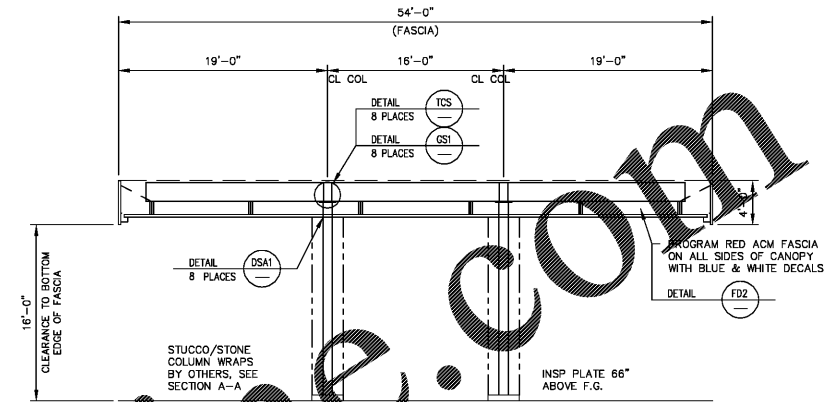


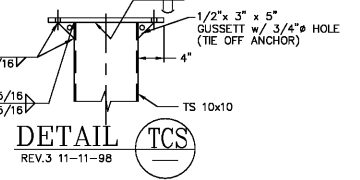
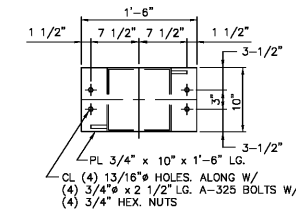
CANOPY ROOF PLAN



CANOPY LIGHTING LAYOUT
INSTALL (24) CREE LED LIGHT FIXTURES; ALL ELECTRICAL WORK BY OTHERS.



MAIN FRAME DETAIL



DETAIL AP1
DETAIL AP2
DETAIL DS1
DETAIL DS2
DETAIL DS3
DETAIL DS4
DETAIL DS5
DETAIL DS6
DETAIL DS7
DETAIL DS8
DETAIL DS9
DETAIL DS10
DETAIL DS11
DETAIL DS12
DETAIL DS13
DETAIL DS14
DETAIL DS15
DETAIL DS16
DETAIL DS17
DETAIL DS18
DETAIL DS19
DETAIL DS20
DETAIL DS21
DETAIL DS22
DETAIL DS23
DETAIL DS24
DETAIL DS25
DETAIL DS26
DETAIL DS27
DETAIL DS28
DETAIL DS29
DETAIL DS30
DETAIL DS31
DETAIL DS32
DETAIL DS33
DETAIL DS34
DETAIL DS35
DETAIL DS36
DETAIL DS37
DETAIL DS38
DETAIL DS39
DETAIL DS40
DETAIL DS41
DETAIL DS42
DETAIL DS43
DETAIL DS44
DETAIL DS45
DETAIL DS46
DETAIL DS47
DETAIL DS48
DETAIL DS49
DETAIL DS50
DETAIL DS51
DETAIL DS52
DETAIL DS53
DETAIL DS54
DETAIL DS55
DETAIL DS56
DETAIL DS57
DETAIL DS58
DETAIL DS59
DETAIL DS60
DETAIL DS61
DETAIL DS62
DETAIL DS63
DETAIL DS64
DETAIL DS65
DETAIL DS66
DETAIL DS67
DETAIL DS68
DETAIL DS69
DETAIL DS70
DETAIL DS71
DETAIL DS72
DETAIL DS73
DETAIL DS74
DETAIL DS75
DETAIL DS76
DETAIL DS77
DETAIL DS78
DETAIL DS79
DETAIL DS80
DETAIL DS81
DETAIL DS82
DETAIL DS83
DETAIL DS84
DETAIL DS85
DETAIL DS86
DETAIL DS87
DETAIL DS88
DETAIL DS89
DETAIL DS90
DETAIL DS91
DETAIL DS92
DETAIL DS93
DETAIL DS94
DETAIL DS95
DETAIL DS96
DETAIL DS97
DETAIL DS98
DETAIL DS99
DETAIL DS100

ANCHOR BOLT SHIPPING REQUIREMENTS		
ANCHOR BOLT USE	BOLT DESCRIPTION	QUANTITY
BCS-BASE PLATE (8 PLACES)	1 1/4" x 36" LONG HEX HEAD ANCHOR BOLTS	32

HARDWARE LIST BREAK-DOWN (REFERENCE ONLY)		
ITEM USE (# OF PLACES FOR CHECKING ONLY)	DESCRIPTION	QUANTITY
TCS-TOP PLATE (8 PLACES)	3/4" x 2-1/2" BOLTS w/ NUTS	32
WPS-BEAM SPLICE (12 PLACES)	5/8" x 2-1/2" BOLTS w/ NUTS	72
WPS-BEAM SPLICE (12 PLACES)	6x10x1/2" PLATE	12
PH20-CONNECTION (24 PLACES)	5/8" x 2-1/2" BOLTS w/ NUTS	96
AP1-CONNECTION (40 PLACES)	5/8" x 2-1/2" BOLTS w/ NUTS	40
AP2-CONNECTION (8 PLACES)	5/8" x 2-1/2" BOLTS w/ NUTS	16
LB2468-BRACE (8 PLACES)	5/8" x 2-1/2" BOLTS w/ NUTS	24
LB2468-BRACE (8 PLACES)	PREFAB 1/4" x 2" x 74-1/8" BRACE STRAP	8

CANOPY SHIPPING STEEL HARDWARE MANIFEST						
QUANTITY	DESCRIPTION	QUANTITY SHIPPED	PULLED BY	CHECKED BY	TRAILER #	LOADED BY
248	5/8" x 2-1/2" BOLTS w/ NUTS					
32	3/4" x 2-1/2" BOLTS w/ NUTS					
12	(WPS) 6x10x1/2" PLATE					
8	PREFAB 1/4" x 2" x 74-1/8" BRACE STRAP					

CANOPY SHIPPING MANIFEST						
		TOP PLATE	BASE PLATE	PLATE DRAINS	W/S & CONDUIT	VENT
4	MF-1 W24x68 (48'-0")					
6	PUR-1,2,3 W14x22 (49'-11 7/8")					
6	PUR-4,5 W14x22 (25'-7 3/4")					
6	PUR-6,7,8 W14x22 (49'-11 7/8")					
8	STR-1 L3x3x3/16" (19'-5 7/8")					
8	STR-2 L3x3x3/16" (28'-5 7/8")					
4	COL 1,3,5,7, HSS 10x10x1/4"					
4	COL 2,4,6,8, HSS 10x10x1/4"					
68	SIDE OUTRIGGERS @ 48" O.C.					
30	END OUTRIGGERS @ 48" O.C.					
1-LOT	HARDWARE					

ERECTION NOTES:
 REVIEW PLANS & DETAILS PRIOR TO INSTALLATION.
 INSTALL BEAMS ACCORDING TO MARKED END #S ON ROOF PLAN.
 BEAM OVERHANG IS 4" LONGER ON RIGHT HAND END OF CANOPY.
 IF APPLICABLE, SAME APPLIES FOR BEAM OVERHANG AT TEE.
 THIS IS TO ALLOW FOR DECK PANEL GROWTH.
 INSTALL DECK PANELS FROM LEFT TO RIGHT ON MAIN CANOPY . IF APPLICABLE SAME APPLIES FOR TEE.
 SEE ROOF PLAN FOR PROPER SLOPE AND HOW SLOPE IS ACQUIRED.
 SEE FASCIA DETAILS WHICH ALSO REFERS BACK TO GENERAL NOTES FOR OUTRIGGER SPACINGS.
 BP FASCIA ONLY START FASCIA AT LEFT END - SEE DIMENSION FOR LOCATION OF FIRST T4 PANEL.

MCGEE CORPORATION
 12701 East Independence Blvd. P.O. Box 1375 Matthews, NC 28106-1375
 Phone: (704) 882-1500
 Fax: (800) 528-5589

PR. JOB NO. 56448
 FINAL JOB NO. 56448
 DRAWING NO. P056448A
RACETRAC STATION #1310
 1325 E MAIN ST
 CARTERSVILLE, GA 30120 (BARTOW)
 SCALE: 1/8"=1'-0"
 DATE: 7/31/18
 IN ACCORDANCE WITH REV. LETTER:
 DRAWN BY: LLE
 CHK'D BY:
METAL CANOPY 54'-0" x 126'-4"
ROOF PLAN & DETAILS
 SHEET NO. 2 OF 3

LAWRENCE R. PILON / PROFESSIONAL ENGINEER
 51 MAPLEVIEW DRIVE/PENNSILLVILLE, NY 13132
 (315) 668-0039
 REGISTERED PROFESSIONAL ENGINEER
 NO. 824363
 LAWRENCE R. PILON