

ISSUE/REVISION RECORD

DATE	DESCRIPTION
08/21/18	ISSUED FOR PERMIT

SPB NO.	DATE
STANDARD PLAN BULLETINS (SPB) MODIFY THE PROTOTYPE SERIES SET NOTED ABOVE. THE LISTED SPB REPRESENTS THE LATEST MODIFICATION INCORPORATED TO THIS PROTOTYPE SERIES SET AT ORIGINAL RELEASE. THE ISSUE/REVISION RECORD COLUMN ABOVE LISTS ANY REVISIONS OR SPB INCORPORATED IN THIS SET AFTER THE ORIGINAL RELEASE. CONTACT RACETRAC ENGINEERING AND CONSTRUCTION FOR ANY SUBSEQUENT BULLETINS NOT INCORPORATED HEREIN.	

PROFESSIONAL SEAL



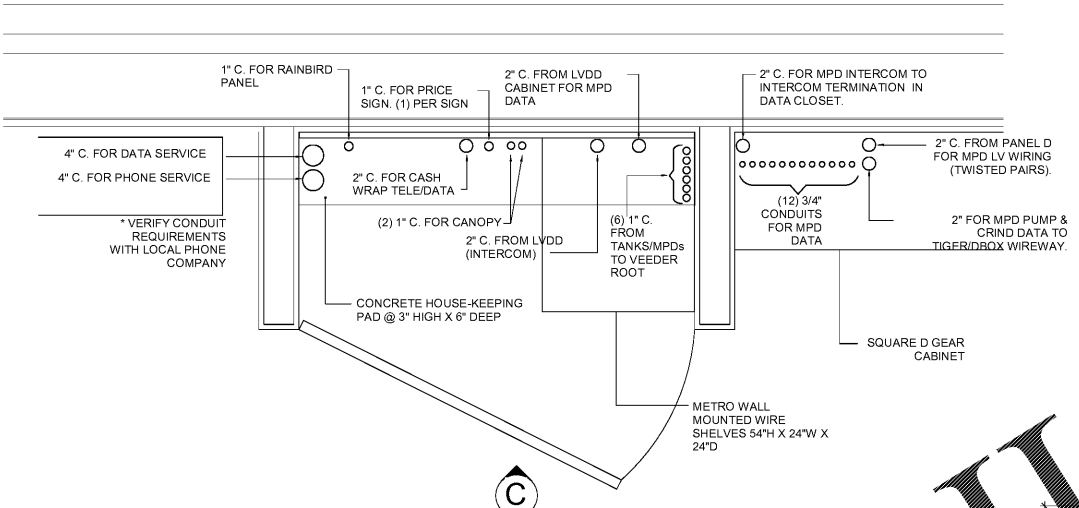
08/21/18

PROJECT NUMBER
 18.714.00

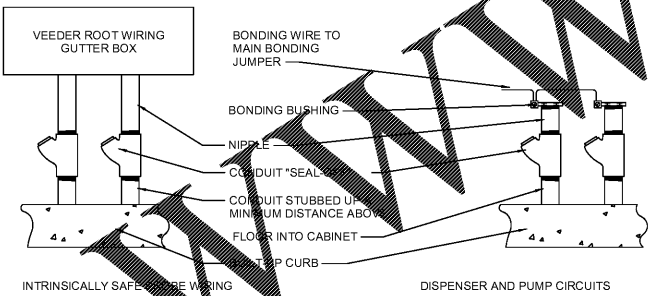
SHEET TITLE
ELECTRICAL DETAILS

SHEET NUMBER
E600

ISSUED FOR PERMIT

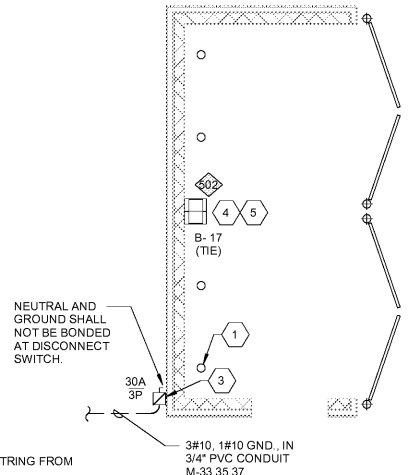


8 TELEPHONE BACKBOARD DETAIL
 N.T.S.



NOTE: REFER TO PLAN AND VERIFY QUANTITY OF STUB-UPS REQUIRED. REFER ALSO TO POWER SHOP DRAWINGS FOR SCHEMATIC ROUGH-IN LOCATIONS.

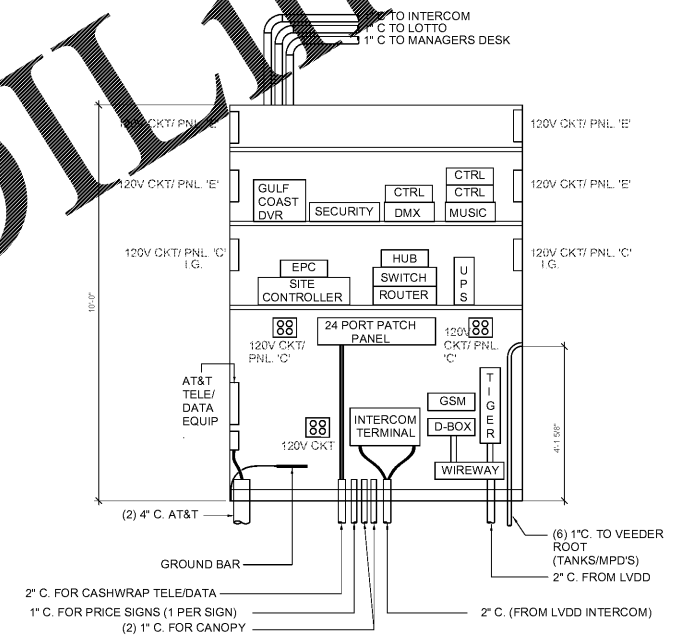
5 DISPENSER PUMP AND INTRINSICALLY SAFE STUB-UP DETAIL
 N.T.S.



KEYNOTES

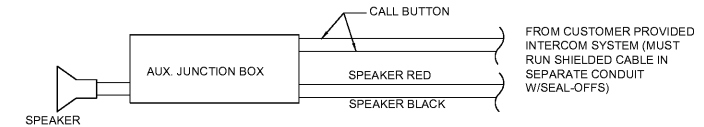
- CONTRACTOR SHALL PROVIDE 3/4" CONDUIT WITH PULLSTRING FROM "MDP" AND STUB-UP AND CAP.
- NOTE NOT USED.
- PROVIDE 30A/2P/240V FUSED DISCONNECT IN NEMA 3R ENCLOSURE WITH 20A FUSES FOR OUTDOOR STORAGE ROOM DISCONNECT SWITCH. LABEL "OUTDOOR STORAGE DUMPSTER ENCLOSURE DISCONNECT".
- PROVIDE DISCONNECT OF CIRCUIT B-17 PER NEC 210.4(B).
- WIRE FIXTURE THROUGH INVERTER, CONTROLLED BY PHOTOCELL. REFER TO WIRING DIAGRAM ON SHEET E-502.

2 DUMPSTER ENCLOSURE ELECTRICAL PLAN
 3/16" = 1'-0"

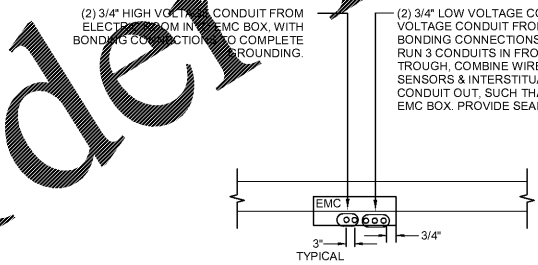


6 TELEPHONE BACKBOARD ELEVATION
 N.T.S.

1 PROVIDE AT TELEPHONE BACKBOARD SQUARE "D" #12/2GTA GROUND BAR. RUN 1#6 BARE GROUND CONDUCTOR TO BUILDING GROUND. LEAVE 6" SLACK FOR CONNECTION BY TELCO.



3 INTERCOM SINGLE LINE DIAGRAM
 N.T.S.



1 TANK MONITORING DETAIL
 N.T.S.

Order Plans @ www.LDOnline.com