



ISSUE/REVISION RECORD

DATE	DESCRIPTION
08/21/18	ISSUED FOR PERMIT

RaceTrac

RACETRAC PETROLEUM, INC.
200 GALLERIA PARKWAY SOUTHEAST
SUITE 900
ATLANTA, GEORGIA 30339
(770) 431-7600

PROJECT NAME

EAST MAIN STREET

CARTERSVILLE GEORGIA

1325 E. MAIN ST.
CARTERSVILLE, GA 30121

RACETRAC STORE NUMBER

1310

PROTOTYPE SERIES 5.5K 2.0

2018 RH MO

PLAN MODIFICATION NOTICE

SPB NO.	DATE
---------	------

STANDARD PLAN BULLETINS (SPB) MODIFY THE PROTOTYPE SERIES SET NOTED ABOVE. THE LISTED SPB REPRESENTS THE LATEST MODIFICATION INCORPORATED TO THIS PROTOTYPE SERIES SET AT ORIGINAL RELEASE. THE ISSUE/REVISION RECORD COLUMN ABOVE LISTS ANY REVISIONS OR SPB INCORPORATED IN THIS SET AFTER THE ORIGINAL RELEASE. CONTACT RACETRAC ENGINEERING AND CONSTRUCTION FOR ANY SUBSEQUENT BULLETINS NOT INCORPORATED HEREIN.

PROFESSIONAL SEAL



08/21/18

PROJECT NUMBER

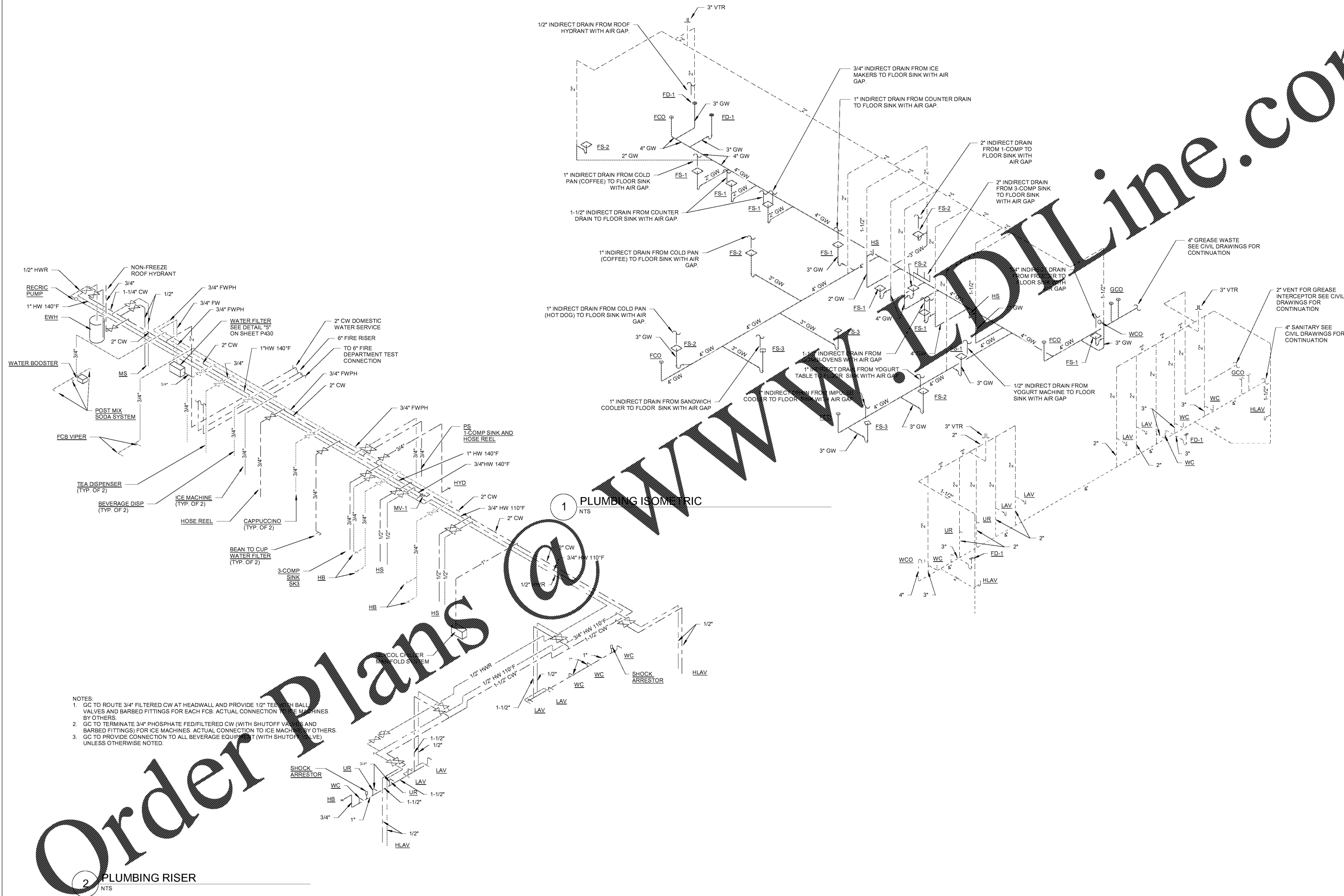
18.714.00

SHEET TITLE

PLUMBING ISOMETRICS

SHEET NUMBER

P410



1 PLUMBING ISOMETRIC
NTS

- NOTES:
- GC TO ROUTE 3/4" FILTERED CW AT HEADWALL AND PROVIDE 1/2" TEE WITH BALL VALVES AND BARBED FITTINGS FOR EACH FCB. ACTUAL CONNECTION TO BE MADE BY OTHERS.
 - GC TO TERMINATE 3/4" PHOSPHATE FED/FILTERED CW (WITH SHUTOFF VALVE AND BARBED FITTINGS) FOR ICE MACHINES. ACTUAL CONNECTION TO ICE MACHINES BY OTHERS.
 - GC TO PROVIDE CONNECTION TO ALL BEVERAGE EQUIPMENT (WITH SHUTOFF VALVE) UNLESS OTHERWISE NOTED.

2 PLUMBING RISER
NTS

Order Plans

www.DLine.com