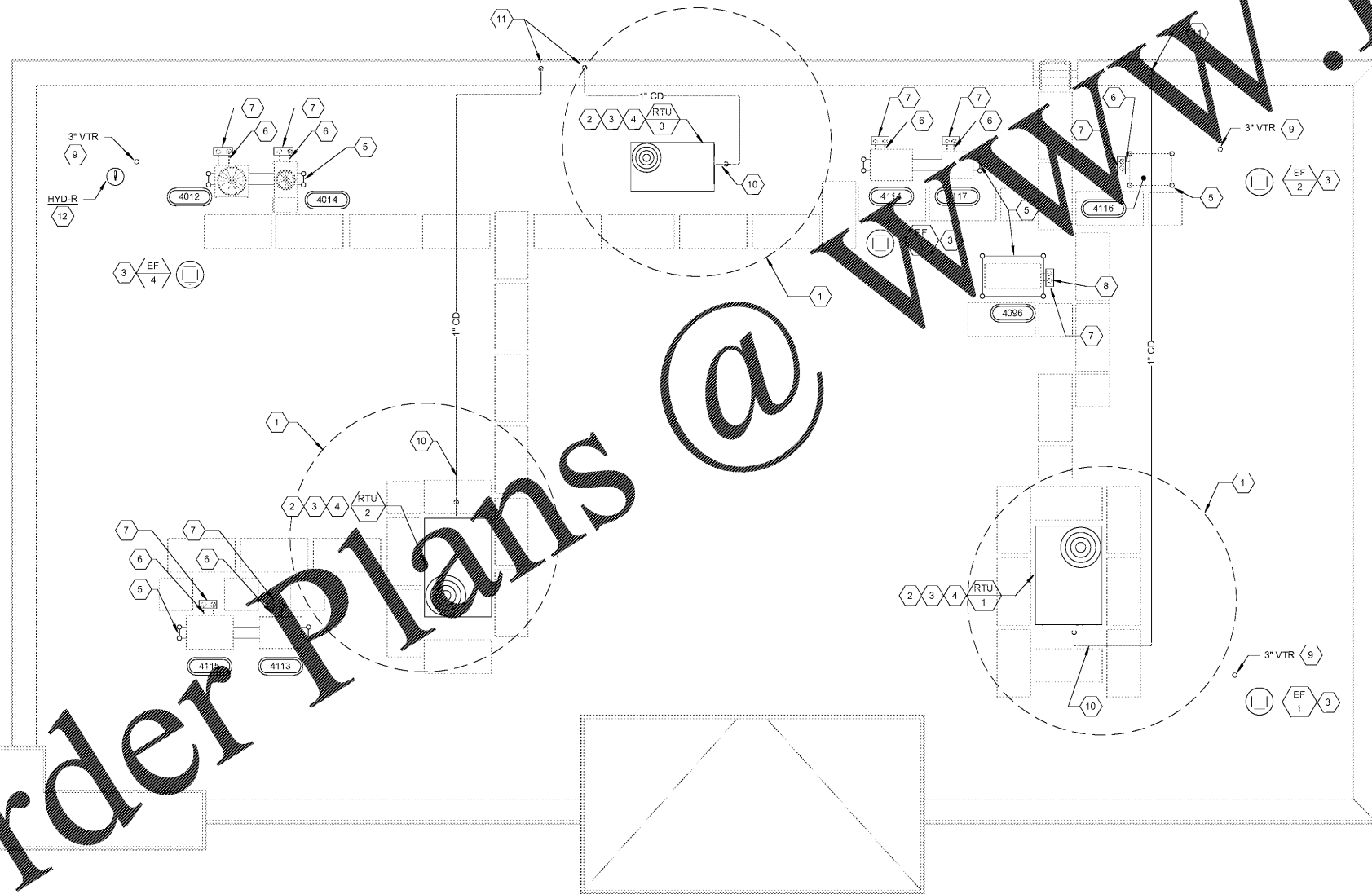


Order Plans @



1 MECHANICAL ROOF PLAN  
3/16" = 1'-0"



**GENERAL NOTES**

1. RUN REFRIGERANT PIPING PER MANUFACTURER'S RECOMMENDATIONS. SUCTION PIPING SHALL BE INSULATED WITH 1/2" MANVILLE AEROTUBE 11 PIPE INSULATION SLID OVER TUBING WITHOUT CUTTING. ALL JOINTS AND SEAMS SHALL BE SEALED WITH ADHESIVE. PROVIDE COATING TO PROTECT INSULATION FROM DETERIORATION FROM THE SUN AND WEATHER.
2. CONTRACTOR TO PROVIDE PROTECTIVE HOUSINGS ON ALL HVAC AND REFRIGERATION EQUIPMENT LOCATED OUTSIDE.
3. GENERAL CONTRACTOR TO PROVIDE PIPE STANDS TO HOLD REFRIGERANT LINES UP OFF ROOF.
4. CONTRACTOR SHALL INSTALL 1/2" HARDWARE WITH ACROSS DIMENSIONS OF AIR INLET & OUTSIDE AIR TAKE TO PREVENT BLOCKAGE FROM DEBRIS. CONTRACTOR RESPONSIBLE FOR PAINTING ALL UP TO ANY SCRATCHED/MARRED SURFACES. PAINT SPEC PER MANUFACTURER'S RECOMMENDATION.
5. COORDINATE EXACT LOCATION OF ALL ROOF PENETRATIONS WITH ARCHITECTURAL DRAWINGS.

**SHEET KEYNOTES**

1. CONTRACTOR TO MAINTAIN 10'-0" CLEARANCE OF OUTSIDE AIR INTAKES ON HVAC UNITS TO ALL EXHAUST OUTLETS AND SANITARY VENTS.
2. MAINTAIN FACTORY RECOMMENDED SERVICE CLEARANCES FOR EQUIPMENT ON ROOF.
3. COORDINATE LOCATION OF UNITS AND ROOF CURBS WITH THE ARCHITECTURAL AND STRUCTURAL DWGS SHOWING BUILDING STEEL. SEE DETAIL 1 AND 6 ON SHEET M430.
4. ALL UTILITIES TO ROOFTOP HVAC UNITS TO BE ROUTED UP THROUGH ROOF CURB. COORDINATE WITH MANUFACTURERS THROUGH THE BASE LOCATIONS FOR UTILITIES.
5. G.C. SHALL PROVIDE EQUIPMENT SUPPORT RACKS FOR REMOTE CONDENSERS M.C. SHALL INSTALL CLUMBER FURNISHED CONDENSERS ON RACKS. SEE DETAIL 8 ON SHEET M430.
6. CONTRACTOR SHALL FURNISH AND INSTALL REFRIGERANT PIPING FROM CONDENSERS TO EVAPORATOR/COOLERS IN THE SPACE. COORDINATE EXACT LINE SIZES WITH EQUIPMENT VENDOR.
7. G.C. SHALL PROVIDE ATR HUB FOR REFRIGERANT PIPING PENETRATION THROUGH ROOF. SEAL ALL OPENINGS AROUND PIPING WITH FOAM AIR TIGHT. SEE DETAIL 3 ON SHEET A201.
8. CONTRACTOR SHALL FURNISH AND INSTALL 1 1/4" CHILLED WATER SUPPLY AND RETURN PIPING FROM CHILLER TO YOGURT MACHINES. COORDINATE EXACT REQUIREMENTS WITH VENDOR.
9. SHOWN FOR REFERENCE.
10. PROVIDE 1" CONDENSATE DRAIN PIPING FROM ROOFTOP HVAC UNIT TO CLOSEST SCUPPER. SEE DETAIL 3/P431.
11. RTU CONDENSATE SHALL TERMINATE AT SCUPPER WITH ELBOW TURNED DOWN IN SCUPPER WITH REQUIRED AIR GAP.
12. NON-FREEZE ROOF HYDRANT. SHOWN FOR REFERENCE. SEE PLUMBING PLANS FOR MORE INFORMATION.

**RaceTrac**  
COPYRIGHT NOTICE  
 THESE PLANS ARE SUBJECT TO FEDERAL COPYRIGHT LAWS. ANY USE OF SAME WITHOUT THE EXPRESSED WRITTEN PERMISSION OF RACETRAC PETROLEUM, INC. IS PROHIBITED. 2016 RACETRAC PETROLEUM INC.

**DESIGN PROFESSIONALS**  
**CHRISTOPHER HILL FOLEY ROSSI & ASSOCIATES**  
 ARCHITECTURE  
 ENGINEERING  
 3680 Pleasant Hill Road  
 Suite 200  
 Duluth, Georgia 30096  
 p 770.622.9858  
 f 770.622.9535  
 www.hillfoleyrossi.com

**ISSUE/REVISION RECORD**

DATE	DESCRIPTION
08/21/18	ISSUED FOR PERMIT

**RaceTrac**  
 RACETRAC PETROLEUM, INC.  
 200 GALLERIA PARKWAY SOUTHEAST  
 SUITE 900  
 ATLANTA, GEORGIA 30339  
 (770) 431-7600

**PROJECT NAME**  
**EAST MAIN STREET**

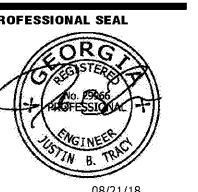
**CARTERSVILLE GEORGIA**  
 1325 E. MAIN ST.  
 CARTERSVILLE, GA 30121

**RACETRAC STORE NUMBER**  
**1310**

**PROTOTYPE SERIES 5.5K 2.0**  
**2018 RH MO**

**PLAN MODIFICATION NOTICE**  
**SPB NO. DATE**

STANDARD PLAN BULLETINS (SPB) MODIFY THE PROTOTYPE SERIES SET NOTED ABOVE. THE LISTED SPB REPRESENTS THE LATEST MODIFICATION INCORPORATED TO THIS PROTOTYPE SERIES SET AT ORIGINAL RELEASE. THE ISSUE/REVISION RECORD COLUMN ABOVE LISTS ANY REVISIONS OR SPB INCORPORATED IN THIS SET AFTER THE ORIGINAL RELEASE. CONTACT RACETRAC ENGINEERING AND CONSTRUCTION FOR ANY SUBSEQUENT BULLETINS NOT INCORPORATED HEREIN.



08/21/18  
**PROJECT NUMBER**  
 18.714.00

**SHEET TITLE**  
**MECHANICAL ROOF PLAN**

**SHEET NUMBER**  
**M200**