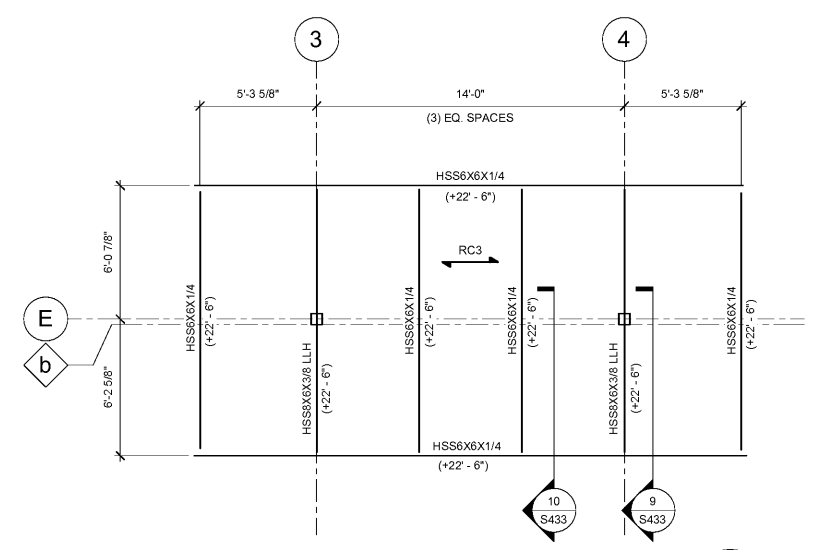
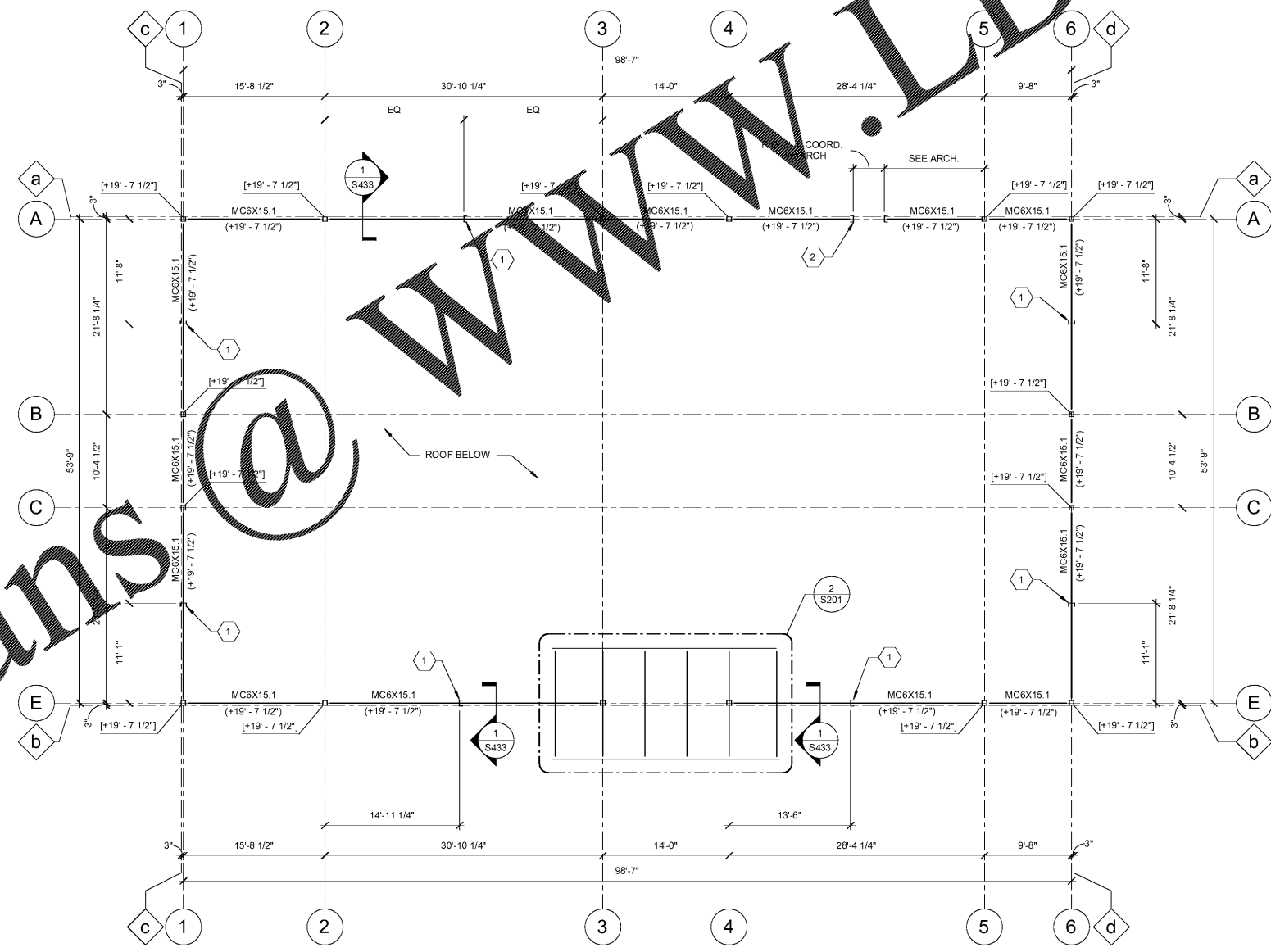


Order Plans @



2 FRONT ENTRY TOWER ROOF FRAMING PLAN  
1/4" = 1'-0"



1 HIGH ROOF/ PARAPET FRAMING PLAN  
1/8" = 1'-0"

GENERAL NOTES

1. [X'-X"] INDICATES TOP OF COLUMN ELEVATION ABOVE FINISHED FLOOR.
2. (X'-X") INDICATES TOP OF STEEL BEAM ELEVATION ABOVE FINISHED FLOOR.
3. SEE SHEETS S000-S002 FOR GENERAL NOTES.

LEGEND

1. RC3 INDICATES METAL ROOF DECK DIRECTION - SEE GENERAL NOTES FOR SIZE, TYPICAL.

SHEET KEYNOTES

1. PROVIDE VERTICAL C4x5.4 FOR PARAPET CHANNEL SUPPORT, SEE DETAIL 14/S432
2. NOTCH PARAPET FOR LADDER, SEE ARCH. FOR LOCATIONS AND DIMENSIONS. SEE DETAIL 12/S432

RaceTrac

THESE PLANS ARE SUBJECT TO FEDERAL COPYRIGHT LAWS. ANY USE OF SAME WITHOUT THE EXPRESSED WRITTEN PERMISSION OF RACETRAC PETROLEUM, INC. IS PROHIBITED. 2016 RACETRAC PETROLEUM INC.

DESIGN PROFESSIONALS



ARCHITECTURE  
ENGINEERING  
3680 Pleasant Hill Road  
Suite 200  
Duluth, Georgia 30096  
p 770.622.9858  
f 770.622.9535  
www.hillfoleyrossi.com

ISSUE/REVISION RECORD

DATE	DESCRIPTION
08/21/18	ISSUED FOR PERMIT

RaceTrac

RACETRAC PETROLEUM, INC.  
200 GALLERIA PARKWAY SOUTHEAST  
SUITE 900  
ATLANTA, GEORGIA 30339  
(770) 431-7600

PROJECT NAME

EAST MAIN STREET

CARTERSVILLE GEORGIA

1325 E. MAIN ST.  
CARTERSVILLE, GA 30121

RACETRAC STORE NUMBER

1310

PROTOTYPE SERIES 5.5K 2.0

2018 RH MO

PLAN MODIFICATION NOTICE

SPB NO. DATE

STANDARD PLAN BULLETINS (SPB) MODIFY THE PROTOTYPE SERIES SET NOTED ABOVE. THE LISTED SPB REPRESENTS THE LATEST MODIFICATION INCORPORATED TO THIS PROTOTYPE SERIES SET AT ORIGINAL RELEASE. THE ISSUE/REVISION RECORD COLUMN ABOVE LISTS ANY REVISIONS OR SPB INCORPORATED IN THIS SET AFTER THE ORIGINAL RELEASE. CONTACT RACETRAC ENGINEERING AND CONSTRUCTION FOR ANY SUBSEQUENT BULLETINS NOT INCORPORATED HEREIN.

PROFESSIONAL SEAL



PROJECT NUMBER

18.714.00

SHEET TITLE

HIGH ROOF FRAMING PLANS

SHEET NUMBER

S201

ISSUED FOR PERMIT