



ARCHITECTURE
 ENGINEERING
 3688 Pleasant Hill Road
 Suite 200
 Duluth, Georgia 30096
 p 770.622.9858
 f 770.622.9535
 www.hillfoleyross.com

© Copyright (as dated) herein
 This drawing and all reproduction thereof are the property of
 Hill Foley Ross & Associates, LLC (HFR). It is intended for the
 sole use of the project named herein. Reproduction without the
 written consent of HFR is prohibited. All rights are to be
 retained by HFR, its parent company and affiliates.

ISSUE/REVISION RECORD

DATE	DESCRIPTION
08/21/18	ISSUED FOR PERMIT
08/21/18	REV-1 PERMIT COMMENTS

GENERAL NOTES

- CONTRACTOR SHALL VERIFY ALL EXTERIOR MATERIAL COLOR AND FINISHES WITH THE ARCHITECT. ANY DISCREPANCIES NOTED SHALL BE BROUGHT TO THE ATTENTION OF THE ARCHITECT FOR CLARIFICATION.
- PROVIDE EXPANSION JOINTS (EJ) AT ALL LOCATIONS WHERE EIFS ABUTS A DISSIMILAR MATERIAL OR WHERE OTHERWISE REQUIRED BY MANUFACTURER.
- PROVIDE EXPANSION JOINTS (EJ) AS LOCATED ON EXTERIOR ELEVATION. SPECIFICATION FOR JOINT SEALANT SHALL BE "PRECAST WHITE SL-2 BY TREMCO. MAXIMUM SPACING OF EXPANSION JOINTS SHALL BE 15'-0" O.C. OR PER MANUFACTURER RECOMMENDATION.
- REFER TO LIGHTING PLANS FOR LIGHTING FIXTURE LOCATION AND SCHEDULE.
- REFER TO STRUCTURAL DRAWINGS FOR JOIST AND BEAM BEARING AND FOUNDATIONS.
- REFER TO REFLECTED CEILING PLANS FOR COMPLETE DIMENSIONS OF ACM JOINT LOCATIONS.

ELEVATION KEYNOTES

- WALL MOUNTED SECURITY CAMERA
- 3" SQUARE DOWNSPOUT. REFER TO CIVIL DRAWINGS FOR CONNECTIONS
- MECHANICAL EQUIPMENT BEYOND
- REFER TO DETAILS ON SHEET A431 FOR CAST STONE SHAPE
- HOSE BIB. REFER TO PLUMBING DRAWINGS
- PATIO FAN. REFER TO SPECIFICATIONS
- ILLUMINATED SIGN PANEL BY OWNER MOUNTED ON RACEWAY
- ACM PANEL REVEAL LINE. REFER TO REFLECTED CEILING PLAN FOR DIMENSIONS
- INTERCOM AND SPEAKER
- EMERGENCY FUEL SHUT OFF SWITCH. MOUNT TOP OF SIGN AT 48" A.F.F.
- LOCATION OF ELECTRICAL SERVICE C/T AND METER
- GENERATOR TAP BOX - SEE ELECTRICAL FOR LOCATION
- SECURITY CAMERA MOUNTED TO FASCIA
- OVERFLOW SPILL SCUPPER
- PACKAGE PASSER. REFER TO EQUIPMENT PLAN
- PROVIDE METAL GUARD GATE AT LADDER TO 8'-0" A.F.F. WITH LOCKING HASP
- 4'-0" WIDE X 1'-7" HIGH SCUPPER. REFER TO DETAILS 9 & 10 ON SHEET A201
- 6" X 12" OVERFLOW SCUPPER 2" ABOVE PRIMARY SCUPPER ELEVATION. REFER TO 10/A201
- LOUVERED VENT. REFER TO MECHANICAL

EXTERIOR MATERIAL SCHEDULE

AWNING	ALUMINUM AWNING	SELECTED BY RACETRAC
BRICK	LAREDO BRICK	MORTAR COLOR "LIGHT BUFF"
CAST STONE	COLOR 1102 NATURAL STONE. MORTAR COLOR "LIGHT BUFF". SEAL WITH (SL-5) SEALANT.	
CEMENT BOARD	ARTISAN V-GROOVE SIDING	PAINT SHERWIN WILLIAMS SEALSkin #7675
EIFS	STO THERM CI	"FINE FINISH" APPLICATION. COLOR TO MATCH SW #6113 "INTERACTIVE CREAM"
GLAZING	1" NON-IMPACT RATED INSULATED GLAZING	CLIMATE ZONES 2 OR 3. IGU AT STOREFRONT 0.28 U-FACTOR, SHGC PF=0.25-0.27 (1/4" PPG SOLARBAN 70-XL LOW-E #2 +1/2" AIR +1/4" CLEAR) OR APPROVED ALTERNATE
METAL	PREFINISHED 4" 2-PIECE COMPRESSION METAL COVER	METAL TO MATCH STOREFRONT COLOR DARK BRONZE
PAINT	SHERWIN WILLIAMS EXTERIOR PAINT TO SW #7020 "BLACK FOX"	
ROOFING	DURO/DUROLAST 50 MIL MEMBRANE ROOFING SYSTEM	WHITE, MECHANICALLY FASTENED
TREX	TX-1 SELECT COMPOSITE	1/2" THICKNESS WOODLAND BROWN
WINDOW FILM	WF-1 WINDOW FILM. 3M PRESTIGE 70 SOLAR FILM	
	WF-2 WINDOW FILM. OPAQUE	

PROJECT NAME

EAST MAIN STREET

CARTERSVILLE GEORGIA

1325 E. MAIN ST. CARTERSVILLE, GA 30121

RACETRAC PROJECT NUMBER

1310

PROTOTYPE SERIES 5.5K 2.0

2018 RH MO

PLAN MODIFICATION NOTICE

SPB NO. DATE

STANDARD PLAN BULLETINS (SPB) MODIFY THE PROTOTYPE SERIES SET NOTED ABOVE. THE LISTED SPB REPRESENTS THE LATEST MODIFICATION INCORPORATED TO THIS PROTOTYPE SERIES SET AT ORIGINAL RELEASE. THE ISSUE/REVISION RECORD COLUMN ABOVE LISTS ANY REVISIONS OR SPB INCORPORATED IN THIS SET AFTER THE ORIGINAL RELEASE. CONTACT RACETRAC ENGINEERING AND CONSTRUCTION FOR ANY SUBSEQUENT BULLETINS NOT INCORPORATED HEREIN.

PROFESSIONAL SEAL



PROJECT NUMBER

18.714.00

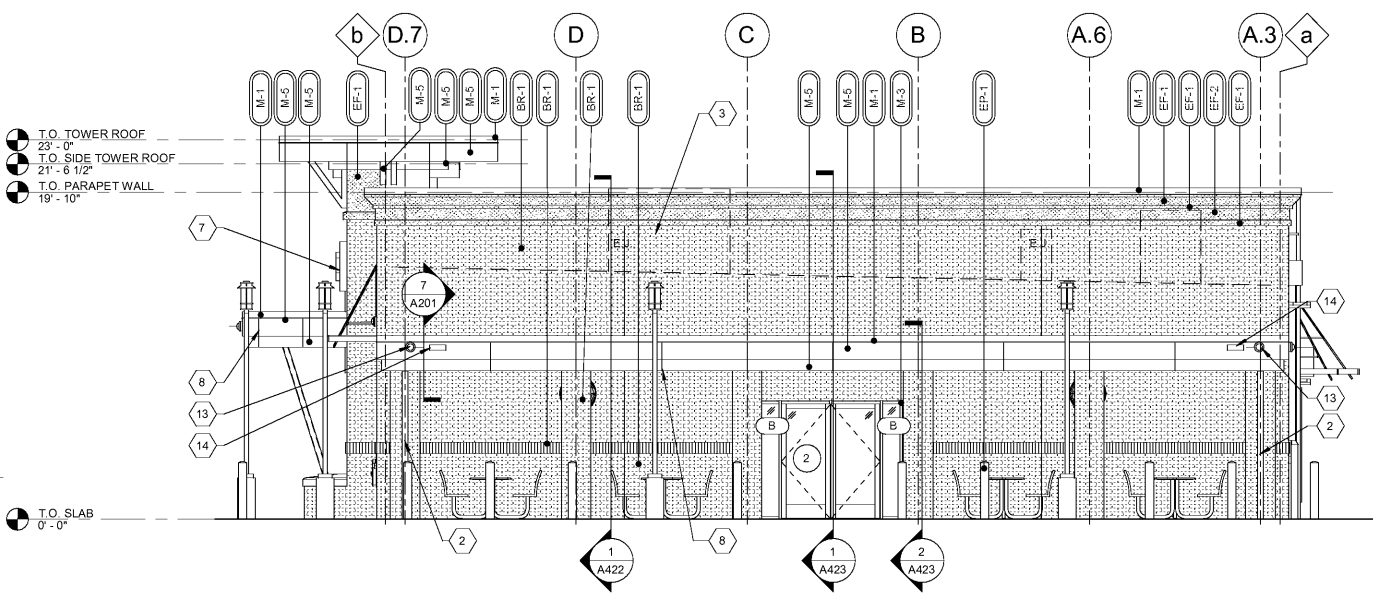
SHEET TITLE

EXTERIOR ELEVATIONS

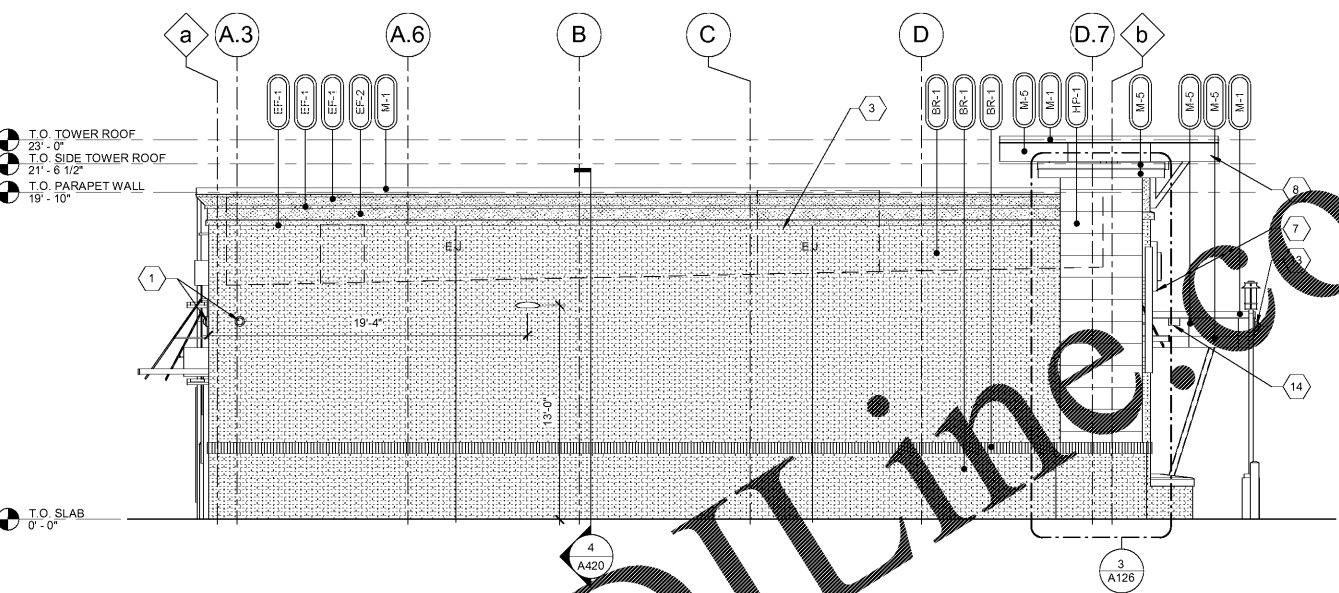
SHEET NUMBER

A300

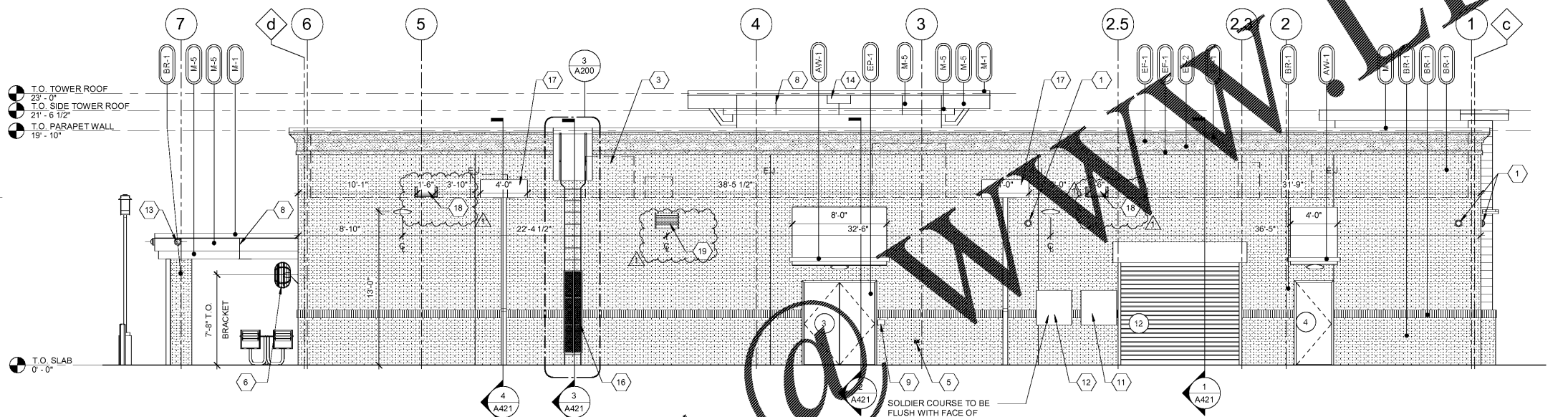
ISSUE FOR PERMIT



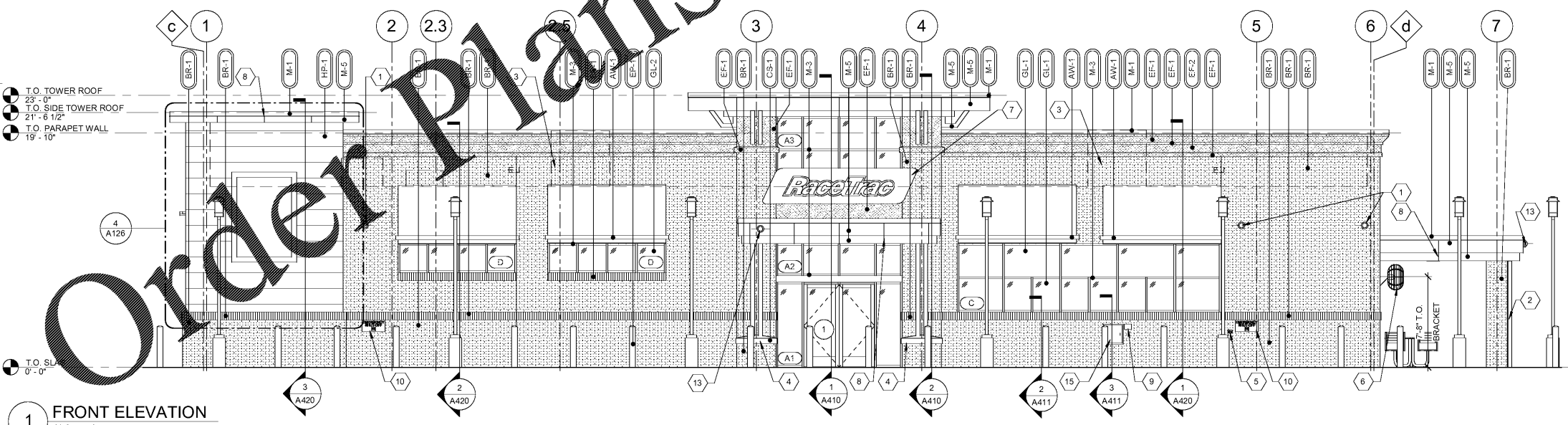
4 RIGHT ELEVATION
3/16" = 1'-0"



3 LEFT ELEVATION
3/16" = 1'-0"



2 REAR ELEVATION
3/16" = 1'-0"



1 FRONT ELEVATION
3/16" = 1'-0"

Order Plans

WWW.LDILINE.COM