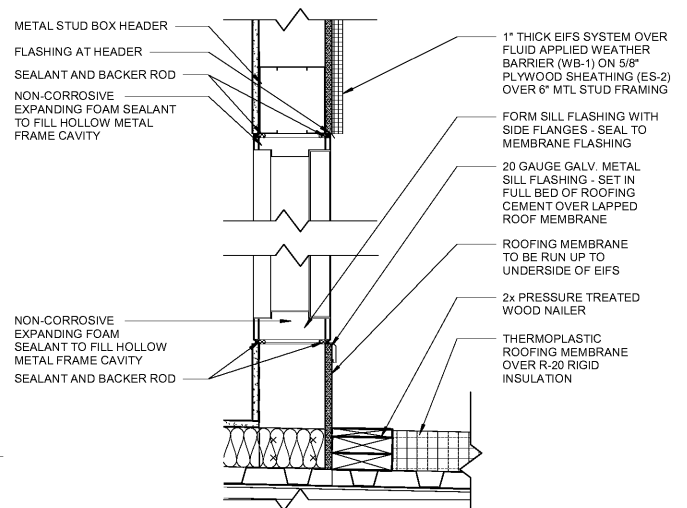
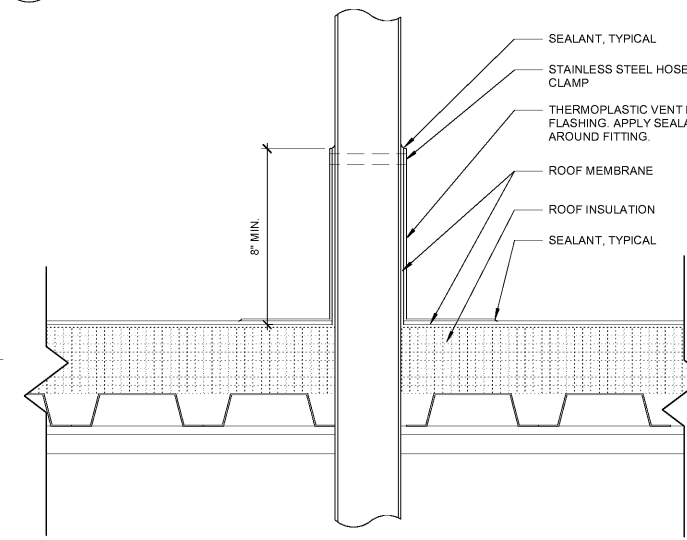


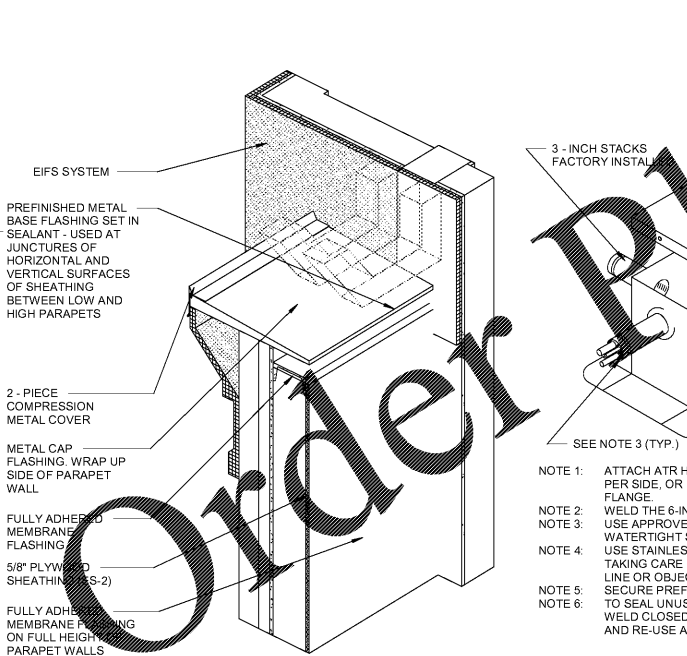
DATE	DESCRIPTION
08/21/18	ISSUED FOR PERMIT
09/21/18	REV-1 PERMIT COMMENTS



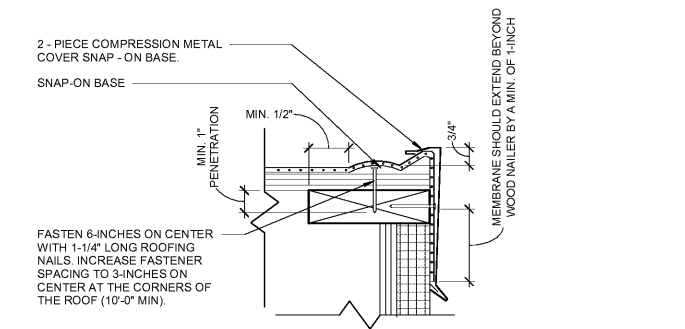
**12 TOWER ACCESS DOOR**  
1 1/2" = 1'-0"



**8 TYPICAL PIPE ROOF PENETRATION DETAIL**  
3" = 1'-0"

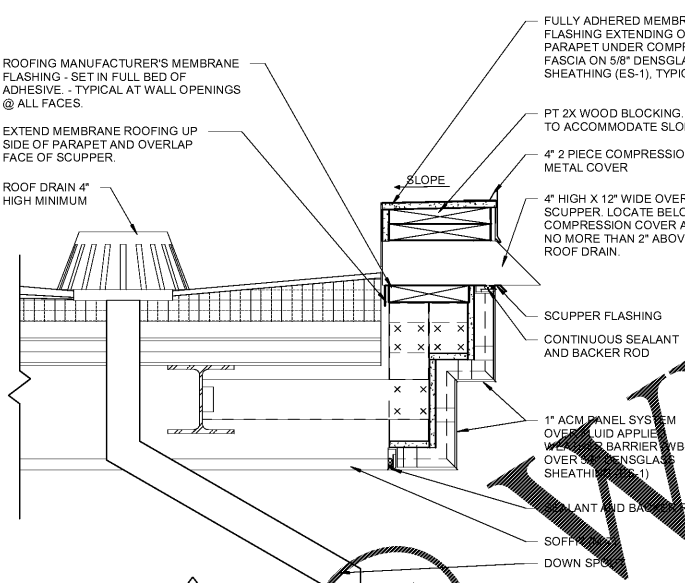


**4 CORNICIE AXONOMETRIC**  
12" = 1'-0"

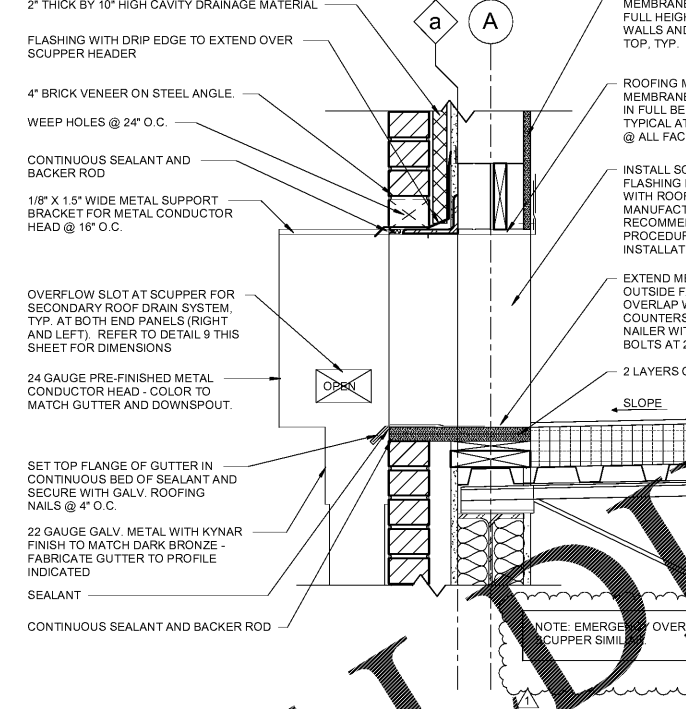


NOTE:  
1. THE USE OF THIS DETAIL IS NOT TO EXCEED A 2-INCH PER 12-INCH SLOPE.  
2. THE FASTENERS USED TO ATTACH THE BASE TO WOOD NAILERS, AND THE MEMBRANE TO THE FACE OF THE NAILERS, MUST BE SPACED NO GREATER THAN 6-INCHES ON CENTER. THE FASTENER SPACING MUST BE INCREASED TO 3-INCHES ON CENTER WHEN ATTACHING THE BASE WITHIN 10-FEET (MIN.) OF THE OUTSIDE CORNERS OF THE BUILDING.  
3. ALLOW FOR 1/8-INCH EXPANSION GAP BETWEEN 10-FOOT LENGTHS OF SNAP-ON BASE. OVERLAP THE SNAP-ON COVERS BY 2-INCHES BETWEEN 10-FOOT LENGTHS.

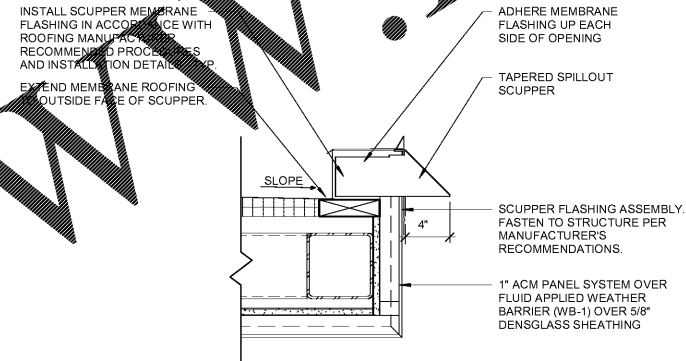
**11 2-PIECE COMPRESSION EDGE**  
3" = 1'-0"



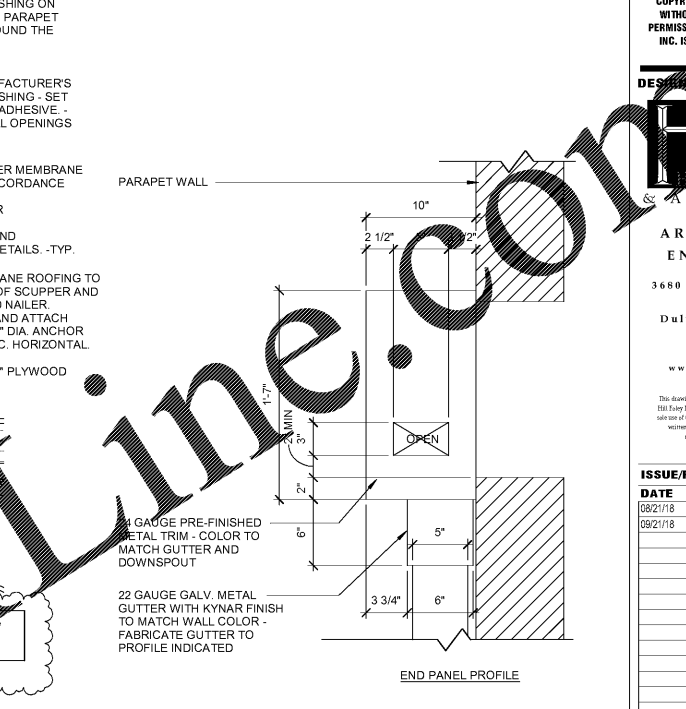
**7 OVERFLOW SCUPPER DETAIL**  
1 1/2" = 1'-0"



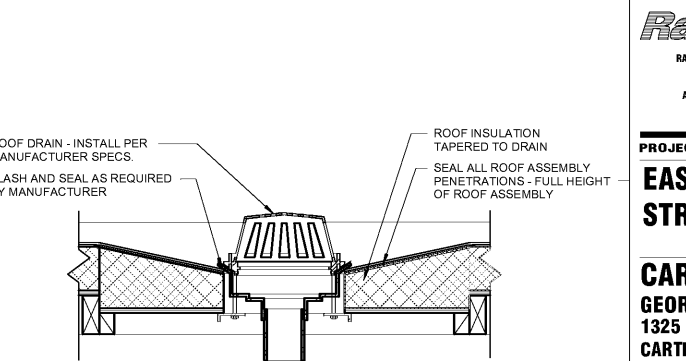
**10 ENLARGE SCUPPER DETAIL**  
1 1/2" = 1'-0"



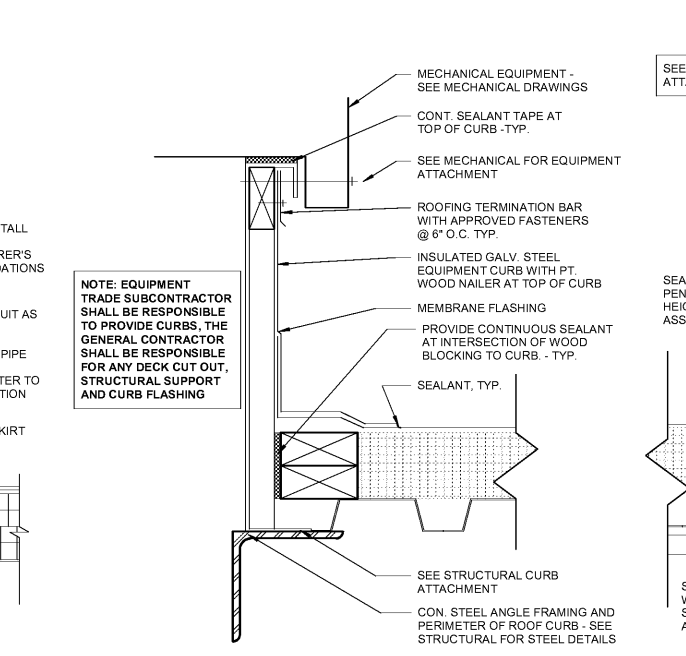
**6 SCUPPER DETAIL AT HIGH TOWER**  
1 1/2" = 1'-0"



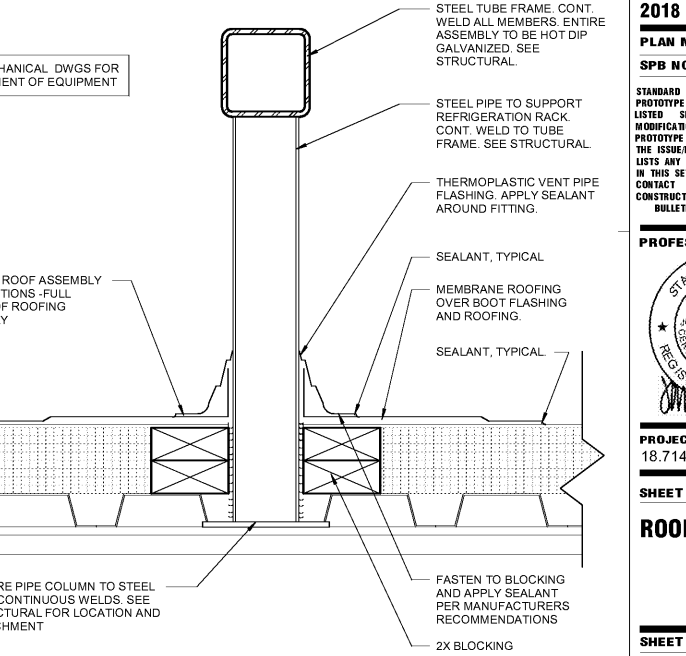
**9 ENLARGED SCUPPER SIDE ELEVATION**  
1 1/2" = 1'-0"



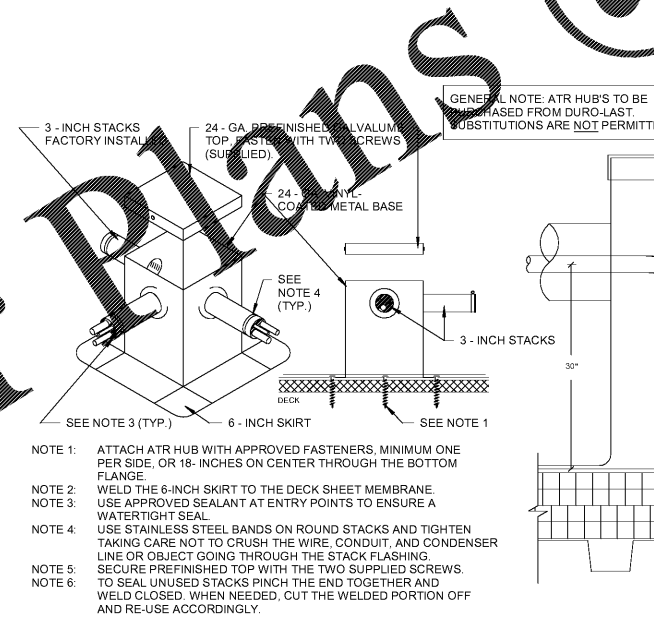
**5 ROOF DRAIN DETAIL**  
1 1/2" = 1'-0"



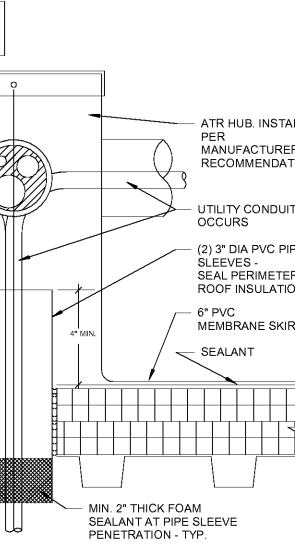
**2 MECH/FAN CURB DETAIL**  
3" = 1'-0"



**1 REFRIGERATION SUPPORT RACK**  
3" = 1'-0"



**3 ATR HUB**  
12" = 1'-0"



**2 MECH/FAN CURB DETAIL**  
3" = 1'-0"

GENERAL NOTE: ATR HUB'S TO BE PURCHASED FROM DURO-LAST. SUBSTITUTIONS ARE NOT PERMITTED.

NOTE 1: ATTACH ATR HUB WITH APPROVED FASTENERS, MINIMUM ONE PER SIDE, OR 18-INCHES ON CENTER THROUGH THE BOTTOM FLANGE.

NOTE 2: WELD THE 6-INCH SKIRT TO THE DECK SHEET MEMBRANE.

NOTE 3: USE APPROVED SEALANT AT ENTRY POINTS TO ENSURE A WATERTIGHT SEAL.

NOTE 4: USE STAINLESS STEEL BANDS ON ROUND STACKS AND TIGHTEN TAKING CARE NOT TO CRUSH THE WIRE, CONDUIT, AND CONDENSER LINE OR OBJECT GOING THROUGH THE STACK FLASHING.

NOTE 5: SECURE PREFINISHED TOP WITH THE TWO SUPPLIED SCREWS.

NOTE 6: SEAL UNUSED STACKS PINCH THE END TOGETHER AND WELD CLOSED. WHEN NEEDED, CUT THE WELDED PORTION OFF AND RE-USE ACCORDINGLY.

2-PIECE COMPRESSION METAL COVER

METAL CAP FLASHING WRAP UP SIDE OF PARAPET WALL

FULLY ADHERED MEMBRANE FLASHING

5/8\"/>

3-INCH STACKS FACTORY INSTALLED

24-GA. PREFINISHED ALUMINUM TOP FLANGE WITH TWO SCREWS (SUPPLIED)

24-GA. GALV. COIL METAL BASE

3-INCH STACKS

6-INCH SKIRT

SEE NOTE 4 (TYP.)

SEE NOTE 1

SEE NOTE 3 (TYP.)

GENERAL NOTE: ATR HUB'S TO BE PURCHASED FROM DURO-LAST. SUBSTITUTIONS ARE NOT PERMITTED.

NOTE 1: ATTACH ATR HUB WITH APPROVED FASTENERS, MINIMUM ONE PER SIDE, OR 18-INCHES ON CENTER THROUGH THE BOTTOM FLANGE.

NOTE 2: WELD THE 6-INCH SKIRT TO THE DECK SHEET MEMBRANE.

NOTE 3: USE APPROVED SEALANT AT ENTRY POINTS TO ENSURE A WATERTIGHT SEAL.

NOTE 4: USE STAINLESS STEEL BANDS ON ROUND STACKS AND TIGHTEN TAKING CARE NOT TO CRUSH THE WIRE, CONDUIT, AND CONDENSER LINE OR OBJECT GOING THROUGH THE STACK FLASHING.

NOTE 5: SECURE PREFINISHED TOP WITH THE TWO SUPPLIED SCREWS.

NOTE 6: SEAL UNUSED STACKS PINCH THE END TOGETHER AND WELD CLOSED. WHEN NEEDED, CUT THE WELDED PORTION OFF AND RE-USE ACCORDINGLY.

MECHANICAL EQUIPMENT - SEE MECHANICAL DRAWINGS

CONT. SEALANT TAPE AT TOP OF CURB - TYP.

SEE MECHANICAL FOR EQUIPMENT ATTACHMENT

ROOFING TERMINATION BAR WITH APPROVED FASTENERS @ 6\"/>

STEEL TUBE FRAME. CONT. WELD ALL MEMBERS. ENTIRE ASSEMBLY TO BE HOT DIP GALVANIZED. SEE STRUCTURAL.

STEEL PIPE TO SUPPORT REFRIGERATION RACK. CONT. WELD TO TUBE FRAME. SEE STRUCTURAL.

THERMOPLASTIC VENT PIPE FLASHING. APPLY SEALANT AROUND FITTING.

SEALANT, TYPICAL.

MEMBRANE ROOFING OVER BOOT FLASHING AND ROOFING.

SEALANT, TYPICAL.

FASTEN TO BLOCKING AND APPLY SEALANT PER MANUFACTURER'S RECOMMENDATIONS.

2X BLOCKING.

SECURE PIPE COLUMN TO STEEL WITH CONTINUOUS WELDS. SEE STRUCTURAL FOR LOCATION AND ATTACHMENT.

NOTE: EQUIPMENT TRADE SUBCONTRACTOR SHALL BE RESPONSIBLE TO PROVIDE CURBS. THE GENERAL CONTRACTOR SHALL BE RESPONSIBLE FOR ANY DECK CUT OUT, STRUCTURAL SUPPORT AND CURB FLASHING