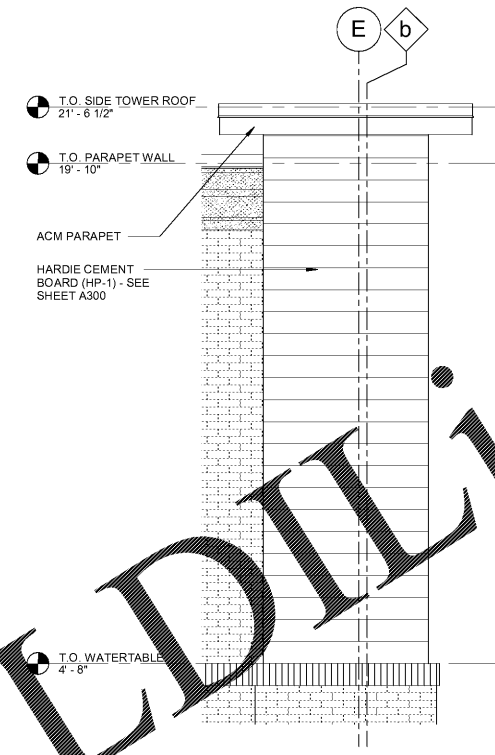
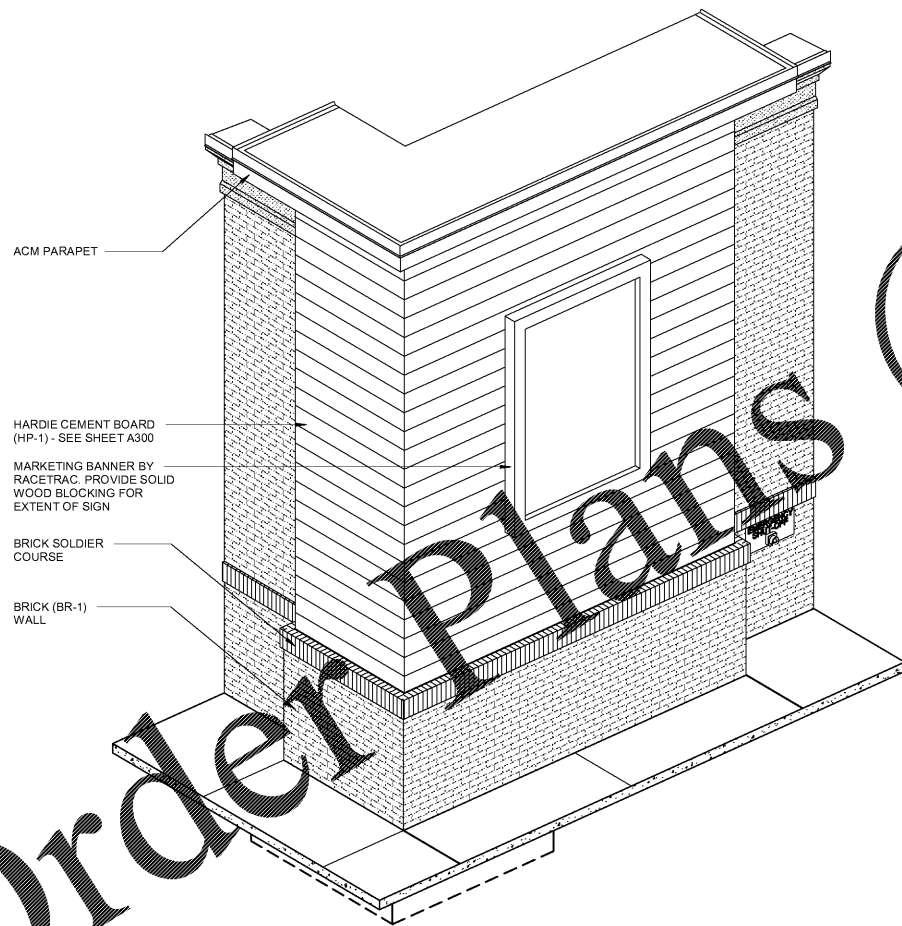


4 CORNER TOWER FRONT ELEVATION
3/8" = 1'-0"

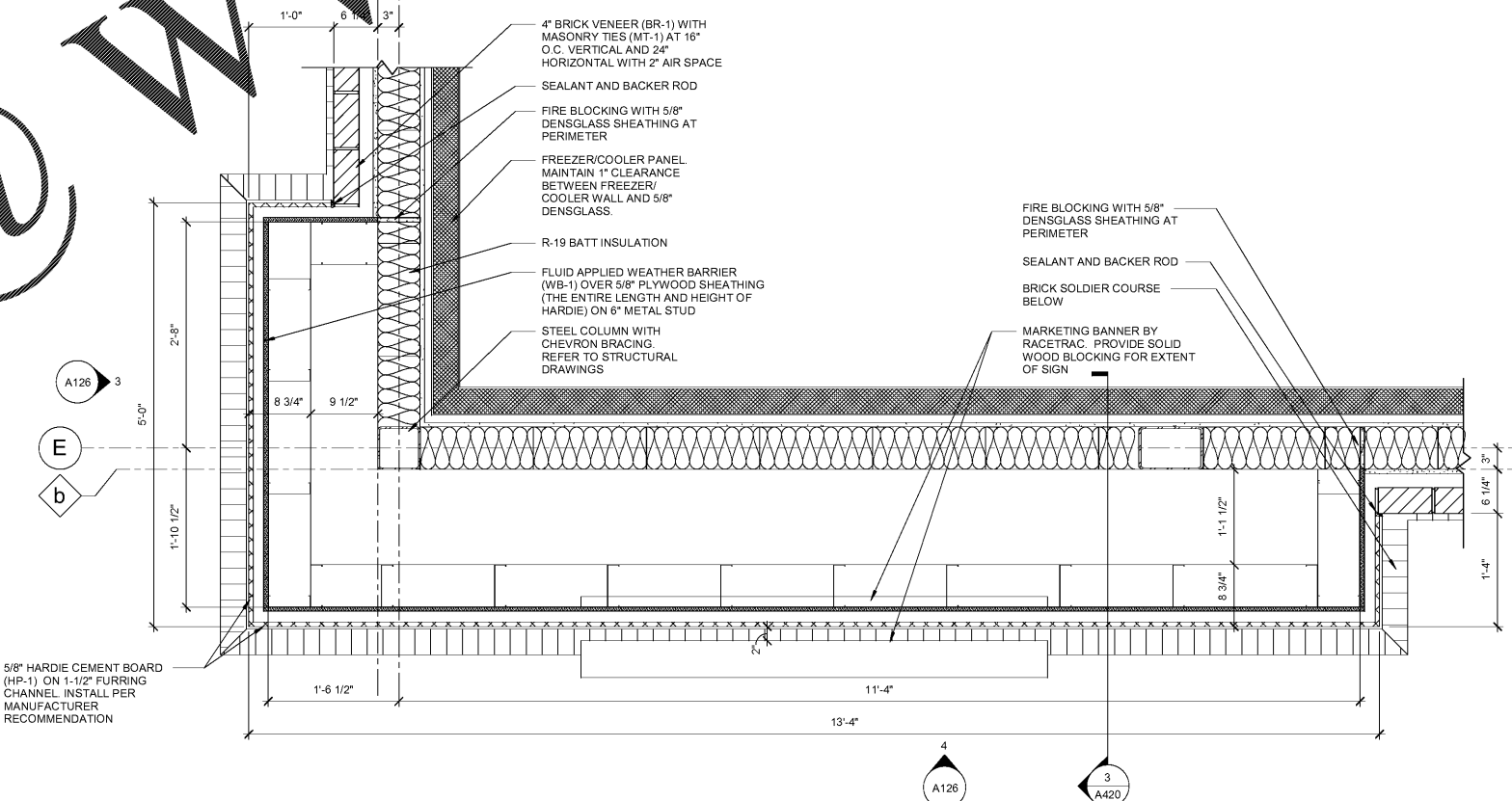


3 CORNER TOWER SIDE ELEVATION
3/8" = 1'-0"



2 CORNER TOWER AXONOMETRIC

@



1 CORNER TOWER ENLARGED PLAN
1" = 1'-0"

RaceTrac
COPYRIGHT NOTICES
THESE PLANS ARE SUBJECT TO FEDERAL
COPYRIGHT LAWS. ANY USE OF SAME
WITHOUT THE EXPRESSED WRITTEN
PERMISSION OF RACETRAC PETROLEUM,
INC. IS PROHIBITED. 2016 RACETRAC
PETROLEUM INC.

DESIGN PROFESSIONALS
HR
HILLFOLEYROSSI
& ASSOCIATES
ARCHITECTURE
ENGINEERING
3680 Pleasant Hill Road
Suite 200
Duluth, Georgia 30096
p 770.622.9858
f 770.622.9535
www.hillfoleyrossi.com

ISSUE/REVISION RECORD

DATE	DESCRIPTION
08/21/18	ISSUED FOR PERMIT

RaceTrac
RACETRAC PETROLEUM, INC.
200 GALLERIA PARKWAY SOUTHEAST
SUITE 900
ATLANTA, GEORGIA 30339
(770) 431-7600

PROJECT NAME
EAST MAIN STREET

CARTERSVILLE GEORGIA
1325 E. MAIN ST.
CARTERSVILLE, GA 30121

RACETRAC STORE NUMBER
1310

PROTOTYPE SERIES 5.5K 2.0
2018 RH MO

PLAN MODIFICATION NOTICE

SPB NO. DATE

STANDARD PLAN BULLETINS (SPB) MODIFY THE PROTOTYPE SERIES SET NOTED ABOVE. THE LISTED SPB REPRESENTS THE LATEST MODIFICATION INCORPORATED TO THIS PROTOTYPE SERIES SET AT ORIGINAL RELEASE. THE ISSUE/REVISION RECORD COLUMN ABOVE LISTS ANY REVISIONS OR SPB INCORPORATED IN THIS SET AFTER THE ORIGINAL RELEASE. CONTACT RACETRAC ENGINEERING AND CONSTRUCTION FOR ANY SUBSEQUENT BULLETINS NOT INCORPORATED HEREIN.

PROFESSIONAL SEAL

STATE OF GEORGIA
JON B. ERICKSON
REGISTERED PROFESSIONAL ARCHITECT
08/21/18

PROJECT NUMBER
18.714.00

SHEET TITLE
CORNER TOWER PLAN AND DETAILS

SHEET NUMBER
A126
ISSUED FOR PERMIT

Order Plans