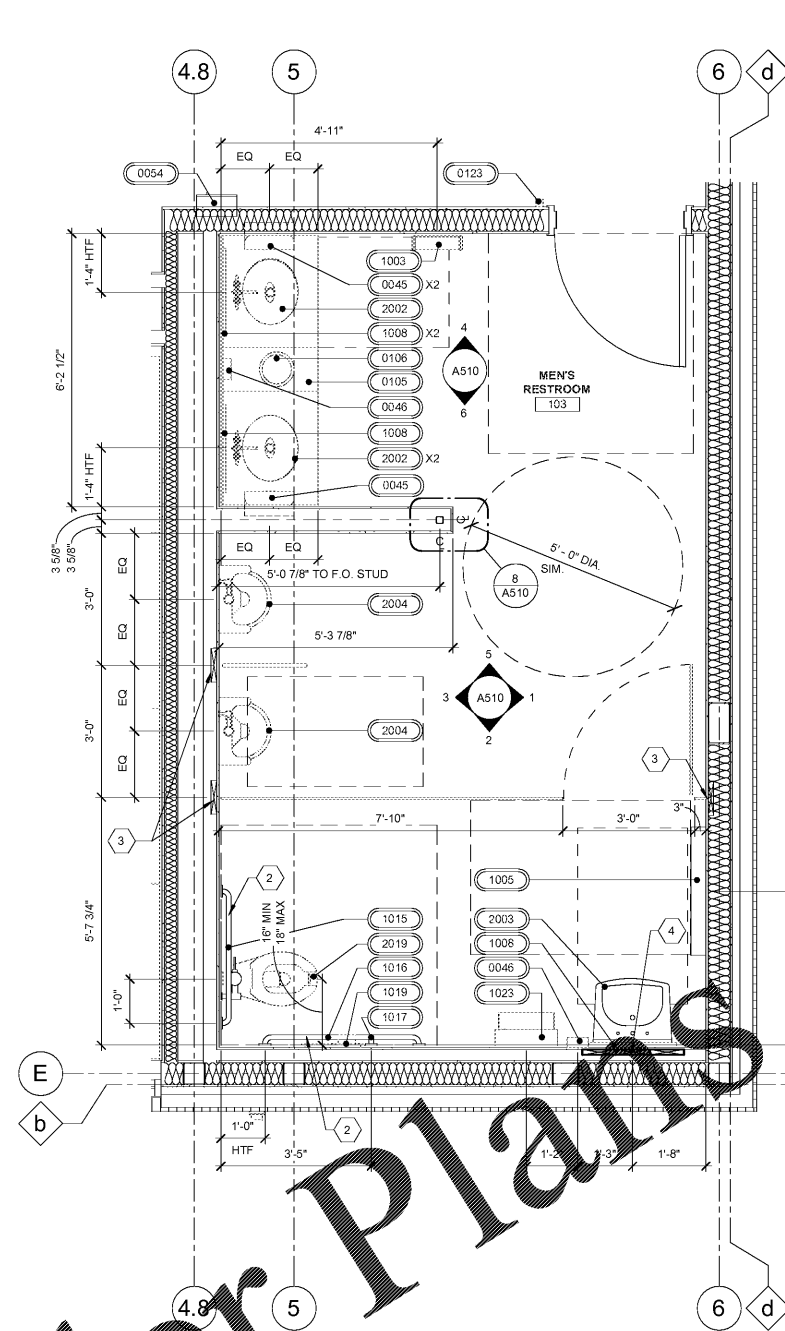
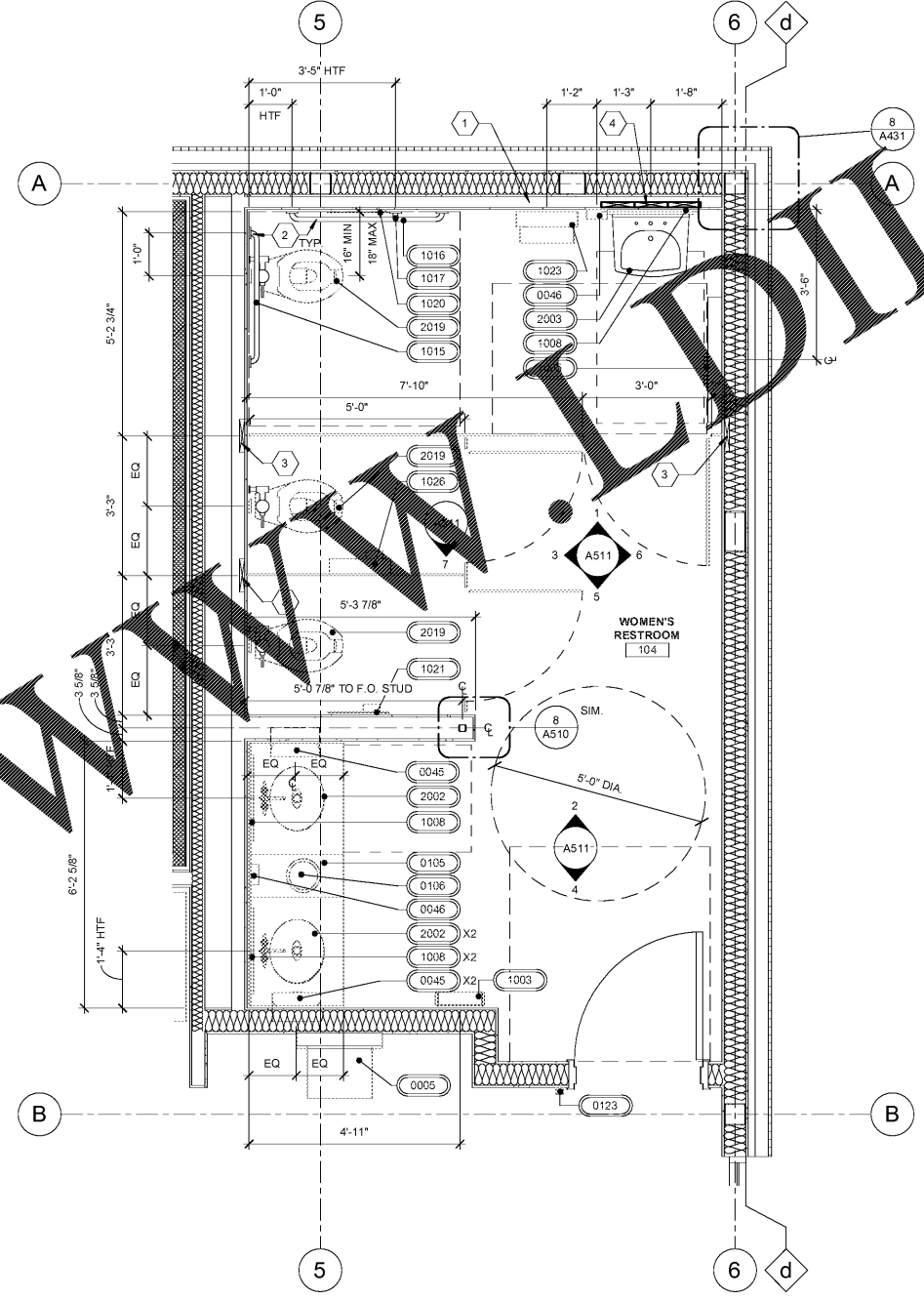


Order Plans @



FLOOR PLAN MENS RESTROOM  
1/2" = 1'-0"



FLOOR PLAN WOMENS RESTROOM  
1/2" = 1'-0"

GENERAL NOTES

1. ALL DIMENSIONS ARE TAKEN TO FACE OF FINISH UNLESS NOTED OTHERWISE.
2. WHEN INSTALLED AT THE LOCATIONS AND MOUNTING HEIGHT INDICATED, THE SPECIFIED FIXTURES PROVIDE FOR CLEAR SPACES, CLEARANCES AND MOUNTING HEIGHTS SHALL BE IN COMPLIANCE WITH APPLICABLE ACCESSIBILITY CODES.
3. INSTALL ACCESSORIES AND LIGHT FIXTURES WITH SCREWS OR BOLTS EXTENDING AT LEAST 1" INTO SOLID BLOCKING.
4. GREEN BOARD CEILING TYPICAL.
5. FOR TOILET ACCESSORIES, SEE EQUIPMENT SCHEDULE 1000 SERIES. FOR PLUMBING FIXTURES, SEE EQUIPMENT SCHEDULE 2000 SERIES.
6. INSTALL TILE TO HAVE A MAX. GROUT JOINT OF 1/8". SEE FINISH SCHEDULE A500 FOR COLORS.
7. PROVIDE BLOCKING BEHIND ALL ACCESSORIES.
8. TOILET STALL DOOR FRAME ASSEMBLY SHALL BE SECURED TO PARTITION WITH STRUCTURE. DOOR FRAME SHALL BE MOUNTED DIRECTLY TO 3" METAL STUD FRAMING FOR STRUCTURAL SUPPORT.
9. REFER TO ELEVATION 8/A510 FOR PARTITIONING STATION INSTALLATION INSTRUCTIONS.
10. INSULATE P-TRAPS AND ALL EXPOSED HOT WATER PIPES WITH PROTECTIVE INSULATION WITH WHITE FINISH.
11. SEE SECTIONS IN A400 SERIES FOR EXTERIOR WALL INFORMATION.

SHEET KEYNOTES

1. FUR OUT WALL WITH 3 5/8" METAL STUDS FLUSH WITH 6" PERIMETER STUDS TO ACCOMMODATE RESTROOM ACCESSORIES AND FIXTURES.
2. PROVIDE 2X10 BLOCKING FOR GRAB BARS. INSTALL PER MANUFACTURERS RECOMMENDATIONS. SEE A511 FOR HEIGHT.
3. PROVIDE 2X10 BLOCKING FOR PARTITION. INSTALL PER MANUFACTURERS RECOMMENDATIONS.
4. PROVIDE 2X10 BLOCKING FOR ADA SINK. INSTALL PER MANUFACTURERS RECOMMENDATIONS.

ENLARGED RESTROOM PLAN LEGEND

HTF: HOLD TO FINISH

**RaceTrac**  
COPYRIGHT NOTICES  
 THESE PLANS ARE SUBJECT TO FEDERAL COPYRIGHT LAWS. ANY USE OF SAME WITHOUT THE EXPRESSED WRITTEN PERMISSION OF RACETRAC PETROLEUM, INC. IS PROHIBITED. 2016 RACETRAC PETROLEUM INC.

**DESIGN PROFESSIONALS**  
**HILLFOLEYROSSI & ASSOCIATES**  
 ARCHITECTURE  
 ENGINEERING  
 3680 Pleasant Hill Road  
 Suite 200  
 Duluth, Georgia 30096  
 p 770.622.9858  
 f 770.622.9535  
 www.hillfoleyrossi.com

ISSUE/REVISION RECORD

DATE	DESCRIPTION
08/21/18	ISSUED FOR PERMIT

**RaceTrac**  
 RACETRAC PETROLEUM, INC.  
 200 GALLERIA PARKWAY SOUTHEAST  
 SUITE 900  
 ATLANTA, GEORGIA 30339  
 (770) 431-7600

PROJECT NAME  
**EAST MAIN STREET**

CARTERSVILLE GEORGIA  
 1325 E. MAIN ST.  
 CARTERSVILLE, GA 30121

RACETRAC STORE NUMBER  
**1310**

PROTOTYPE SERIES 5.5K 2.0  
 2018 RH MO

PLAN MODIFICATION NOTICE

SPB NO. DATE

STANDARD PLAN BULLETINS (SPB) MODIFY THE PROTOTYPE SERIES SET NOTED ABOVE. THE LISTED SPB REPRESENTS THE LATEST MODIFICATION INCORPORATED TO THIS PROTOTYPE SERIES SET AT ORIGINAL RELEASE. THE ISSUE/REVISION RECORD COLUMN ABOVE LISTS ANY REVISIONS OR SPB INCORPORATED IN THIS SET AFTER THE ORIGINAL RELEASE. CONTACT RACETRAC ENGINEERING AND CONSTRUCTION FOR ANY SUBSEQUENT BULLETINS NOT INCORPORATED HEREIN.

PROFESSIONAL SEAL

PROJECT NUMBER  
 18.714.00

SHEET TITLE  
**RESTROOM ENLARGED PLAN**

SHEET NUMBER  
**A123**  
 ISSUED FOR PERMIT