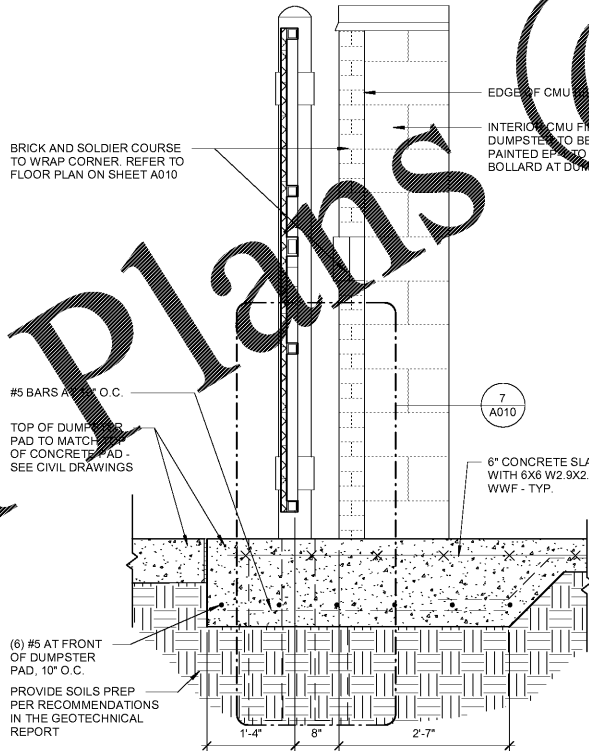
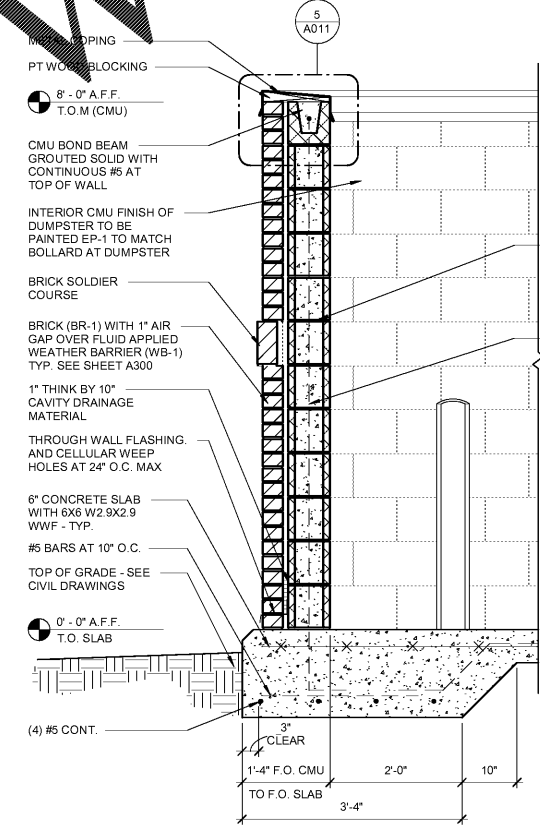


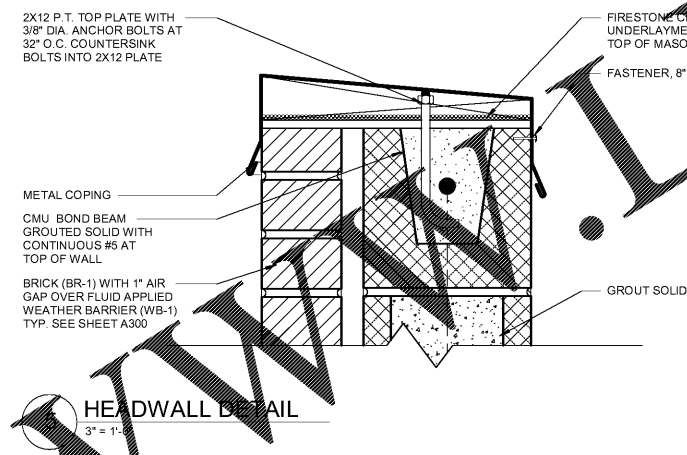
Order Plans @



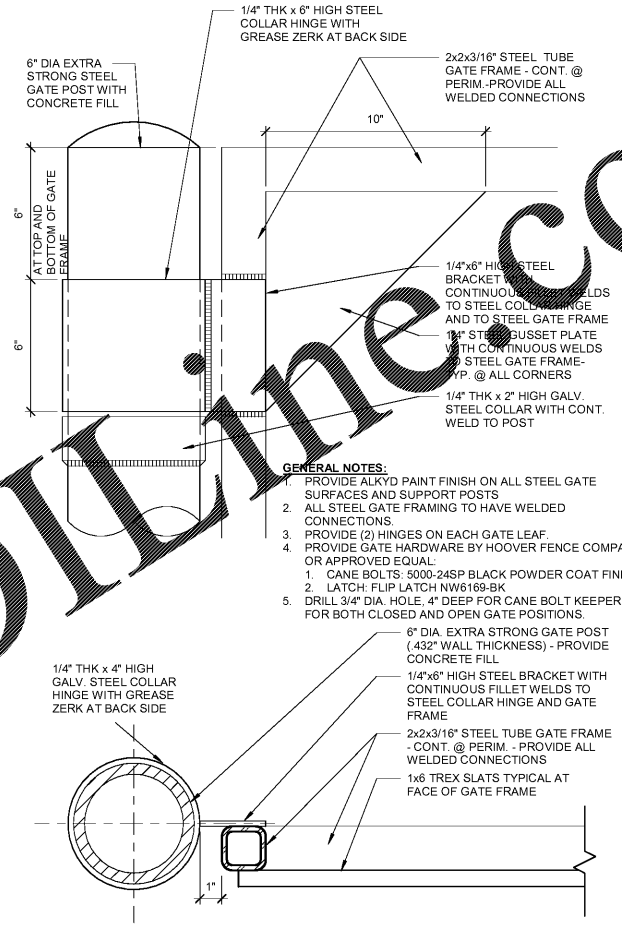
3 DUMPSTER FRONT WALL  
3/4" = 1'-0"



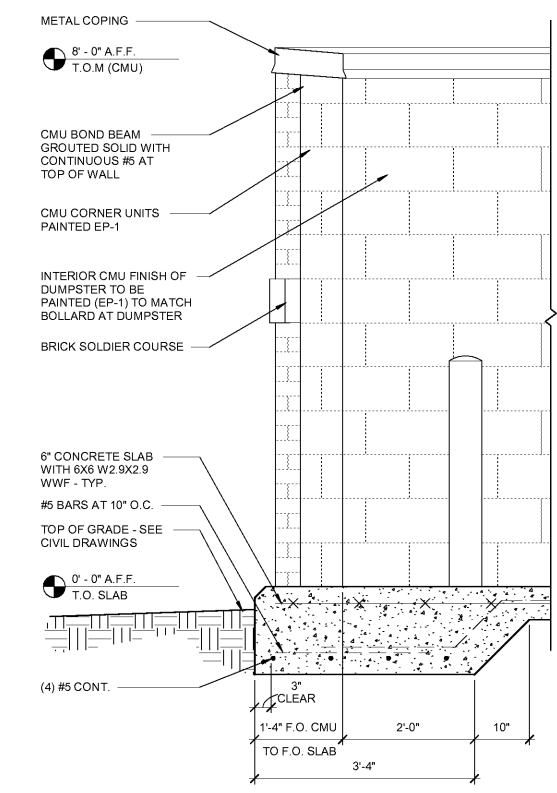
2 DUMPSTER SIDE WALL  
3/4" = 1'-0"



4 GATE POST DETAIL  
3" = 1'-0"



5 HEADWALL DETAIL  
3" = 1'-0"



1 DUMPSTER SIDE WALL  
3/4" = 1'-0"

**RaceTrac**  
COPYRIGHT NOTICES  
 THESE PLANS ARE SUBJECT TO FEDERAL COPYRIGHT LAWS. ANY USE OF SAME WITHOUT THE EXPRESSED WRITTEN PERMISSION OF RACETRAC PETROLEUM, INC. IS PROHIBITED. 2016 RACETRAC PETROLEUM, INC.

**DESIGN PROFESSIONALS**  
**HR**  
 HILLFOLEYROSSI & ASSOCIATES  
 ARCHITECTURE  
 ENGINEERING  
 3680 Pleasant Hill Road  
 Suite 200  
 Duluth, Georgia 30096  
 p 770.622.9858  
 f 770.622.9535  
 www.hillfoleyrossi.com

**ISSUE/REVISION RECORD**

DATE	DESCRIPTION
08/21/18	ISSUED FOR PERMIT

**RaceTrac**  
 RACETRAC PETROLEUM, INC.  
 200 GALLERIA PARKWAY SOUTHEAST  
 SUITE 900  
 ATLANTA, GEORGIA 30339  
 (770) 431-7600

**PROJECT NAME**  
**EAST MAIN STREET**  
**CARTERSVILLE GEORGIA**  
 1325 E. MAIN ST.  
 CARTERSVILLE, GA 30121

**RACETRAC STORE NUMBER**  
**1310**  
**PROTOTYPE SERIES 5.5K 2.0**  
**2018 RH MO**

**PLAN MODIFICATION NOTICE**

SPB NO.	DATE
STANDARD PLAN BULLETINS (SPB) MODIFY THE PROTOTYPE SERIES SET NOTED ABOVE. THE LISTED SPB REPRESENTS THE LATEST MODIFICATION INCORPORATED TO THE PROTOTYPE SERIES SET AT ORIGINAL RELEASE. THE ISSUE/REVISION RECORD COLUMN ABOVE LISTS ANY REVISIONS OR SPB INCORPORATED IN THIS SET AFTER THE ORIGINAL RELEASE. CONTACT RACETRAC ENGINEERING AND CONSTRUCTION FOR ANY SUBSEQUENT BULLETINS NOT INCORPORATED HEREIN.	

**PROFESSIONAL SEAL**  
 STATE OF GEORGIA  
 JON B. ERICKSON  
 REGISTERED PROFESSIONAL ARCHITECT  
 08/21/18

**PROJECT NUMBER**  
 18.714.00

**SHEET TITLE**  
**DUMPSTER ENCLURE DETAILS**

**SHEET NUMBER**  
**A011**  
 ISSUED FOR PERMIT