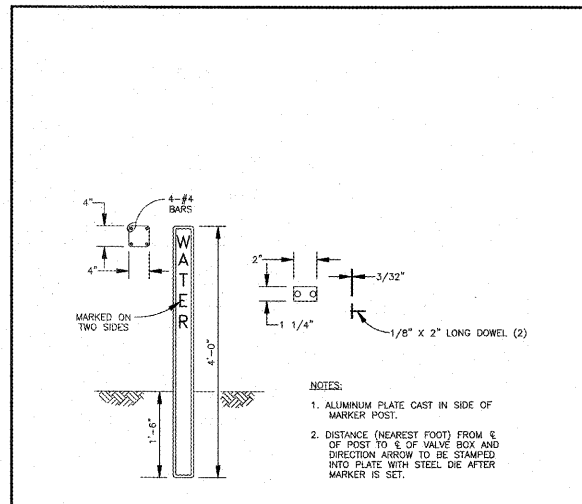


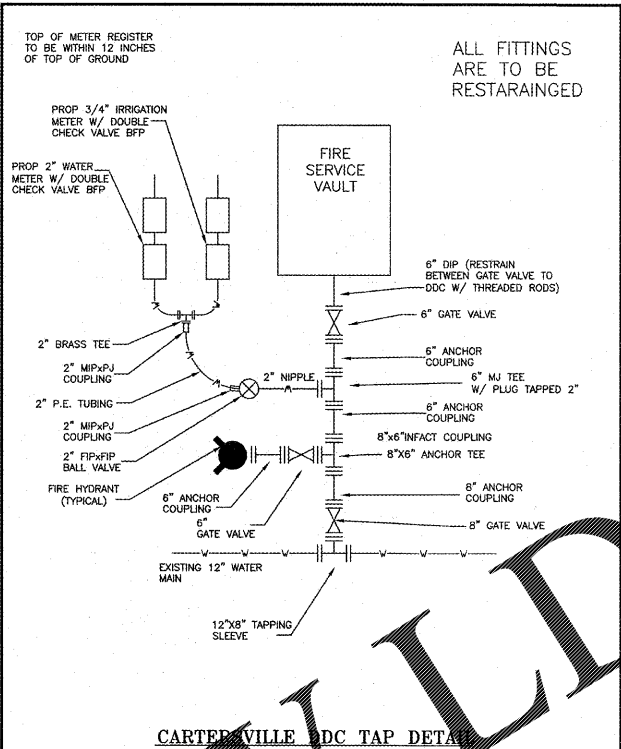
- NOTES:
- BOXES EXCEEDING 5' IN DEPTH MUST BE APPROVED BY THE CITY.
  - WHEN METER BOX CANNOT BE LOCATED ENTIRELY ON R/W, A PERMANENT EASEMENT SHALL BE OBTAINED TO PREVENT FENCES OR OTHER OBSTRUCTIONS FROM BEING ERRECTED AROUND THE METER BOX.
  - COVER OPENING & STEPS TO BE PLACED NEAREST THE METER REGISTER.
  - THE METER MUST BE INSTALLED WITH AT LEAST 8 DIAMETERS OF STRAIGHT PIPE SAME SIZE AS METER ON THE INLET SIDE TO PERMIT ON-SITE MAINTENANCE AND CALIBRATION.
  - THESE BOXES ARE NOT TO BE INSTALLED IN TRAFFIC AREAS WITHOUT PRIOR PERMISSION FROM THE CITY.
  - DOUBLE CHECK BACK FLOW PREVENTION REQUIRED ON PROPERTY OWNER'S SIDE OF METER. LOCATION SHALL BE APPROVED BY THE CITY.
  - ALL VALVES AND FITTINGS INSIDE THE VAULT SHALL BE FLANGED.
  - ALL FITTINGS OUTSIDE THE VAULT SHALL BE MECHANICAL JOINT WITH RETAINER GLANDS.

CITY OF CARTERSVILLE WATER DEPARTMENT	TYPICAL LARGE METER & VAULT INSTALLATION CONSTRUCTION STANDARD	DATE: SEPT. 14	STANDARD NO. 5.8.16
APPROVED:			



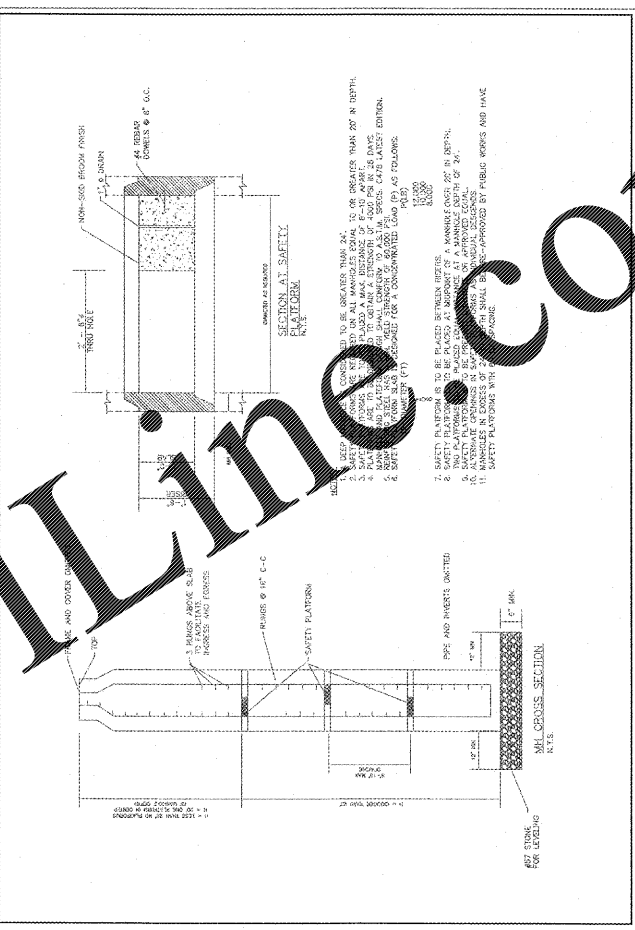
DETAIL OF CONCRETE VALVE MARKER

CITY OF CARTERSVILLE WATER DEPARTMENT	CONCRETE VALVE MARKER CONSTRUCTION STANDARD	DATE: SEPT. 14	STANDARD NO. 5.8.17
APPROVED:			



CARTERSVILLE D.C. TAP DETAIL

CITY OF CARTERSVILLE WATER DEPARTMENT	FIRE SERVICE TAP DETAIL CONSTRUCTION STANDARD	DATE: SEPT. 15	STANDARD NO. SPEC
APPROVED:			



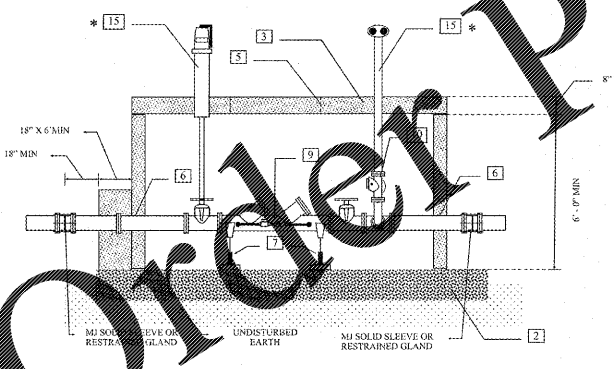
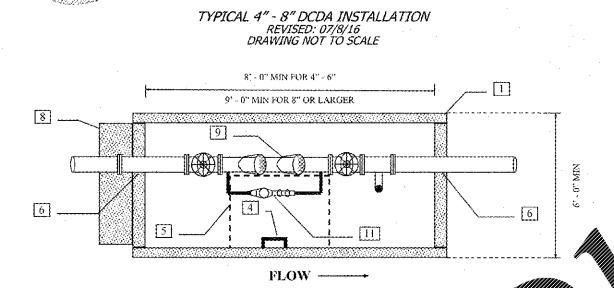
SAFETY PLATFORM FOR DEEP MANHOLE

CITY DETAIL NOT TO SCALE

CITY DETAIL NOT TO SCALE

CITY DETAIL NOT TO SCALE

SAFETY PLATFORM FOR DEEP MANHOLE NOT TO SCALE

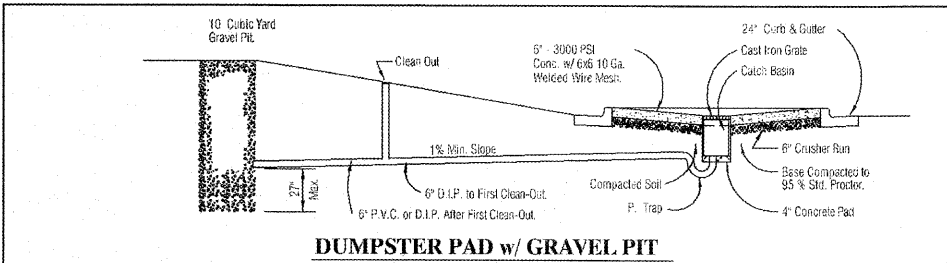


\* THE DRAWING DEPICTS A TYPICAL ARRANGEMENT OF POST INDICATOR VALVE AND FIRE DEPARTMENT CONNECTOR. CHECK WITH THE APPROPRIATE FIRE DEPARTMENT BEFORE FABRICATION. ALL POST INDICATOR VALVES INSIDE THE CITY OF CARTERSVILLE ARE TO BE ELECTRONICALLY MONITORED.

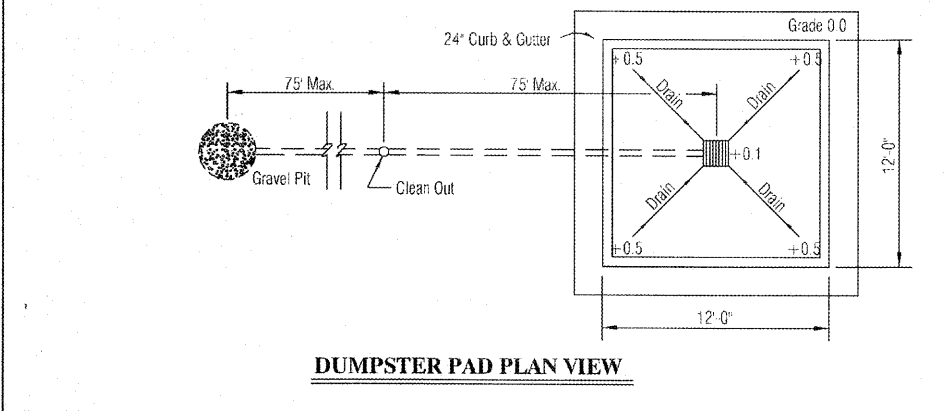


- TYPICAL 4" - 8" DCDA INSTALLATION  
REVISED: 07/28/16  
DRAWING NOT TO SCALE
- VAULT SHALL BE PRECAST REINFORCED CONCRETE WITH A MINIMUM WALL THICKNESS OF 6".
  - VAULT TOP SHALL BE 8" MINIMUM REINFORCED CONCRETE WITH 36" x 36" ACCESS OPENING OFFSET TO ONE SIDE.
  - ALUMINUM ACCESS LADDER DOWNE TO WALL OR MANHOLE STEPS AT ACCESS OPENING.
  - COVER 36" x 36" BILCO - ALUMINUM SINGLE MODEL J-4AL OR EQUIVALENT.
  - VAULT INLET/OUTLET PIPE OPENINGS TO BE SEALED WITH GROUT OR MORTAR. PIPE MUST NOT SUPPORT VAULT.
  - DOUBLE CHECK DETECTOR ASSEMBLY (DCDA) TO BE SUPPORTED AT TWO POINTS WITH PIPE STAND OR SOLID MASONRY SUPPORT.
  - THRUST BLOCKING.
  - DCDA ASSEMBLY - MUST MEET ASSE 1024 STANDARDS.
  - SINGLE CHECK VALVE WITH DRAIN.
  - DEVICE TESTING: ALL DCDA ASSEMBLIES SHALL BE TESTED AT THE TIME OF INSTALLATION AND AT LEAST ANNUALLY THEREAFTER BY AN APPROVED MATERIAL MUST BE INSTALLED FROM THE POST INDICATOR VALVE (PIV) LOCATION TO THE BUILDING FOR ELECTRONICALLY MONITORING OF THE PIV. LOCATION AND TYPE OF EQUIPMENT AS SPECIFIED BY THE CARTERSVILLE FIRE DEPARTMENT 770-387-5635 OR BARTOW COUNTY FIRE DEPT. 770-387-5151 DEPENDING ON JURISDICTION.
  - DETECTOR METER ON DCDA SHALL BE A "NEPTUNE" BRAND METER REGISTERING IN 100 CUBIC FOOT UNITS AND EQUIPPED WITH A PRO-RAD REGISTER AND TOUCHPAD.

CITY DETAIL NOT TO SCALE



DUMPSTER PAD w/ GRAVEL PIT



DUMPSTER PAD PLAN VIEW

CITY DETAIL NOT TO SCALE

NO.	REVISIONS	DATE
3	CITY COMMENTS	9/05/18
2	CITY COMMENTS	8/08/18
1	CITY COMMENTS	5/31/18

FOR INFORMATIONAL PURPOSES ONLY

THESE PLANS ARE SUBJECT TO FEDERAL COPYRIGHT LAWS. ANY USE OF SAME WITHOUT THE EXPRESS WRITTEN PERMISSION OF RACETRAC PETROLEUM, INC. IS PROHIBITED.

RaceTrac  
RACETRAC PETROLEUM, INC.  
200 GALLERIA PKWY, SUITE 900  
ATLANTA, GA 30339  
(770) 431-7600

CONSTRUCTION DETAILS - 4  
RACETRAC MARKET  
1328 E. MAIN STREET  
CARTERSVILLE, BARTOW COUNTY, GEORGIA  
LAND LOT 361, 4TH DISTRICT, 3RD SECTION, PARCEL C096-0086-001  
SCALE: 1" = 30'  
DATE: 03/28/2018  
JOB NO. 005031  
DRAWN: MAT

CD-4  
SHEET NO. REV.