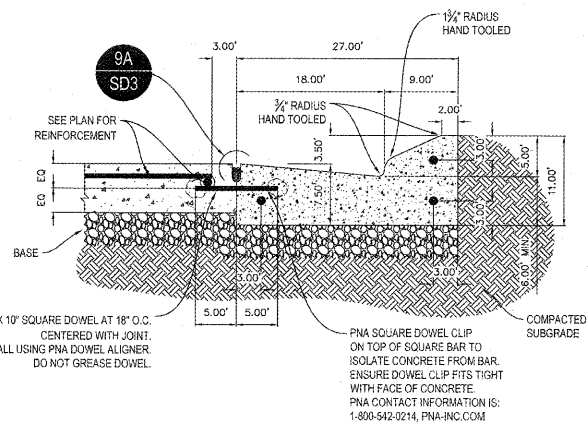
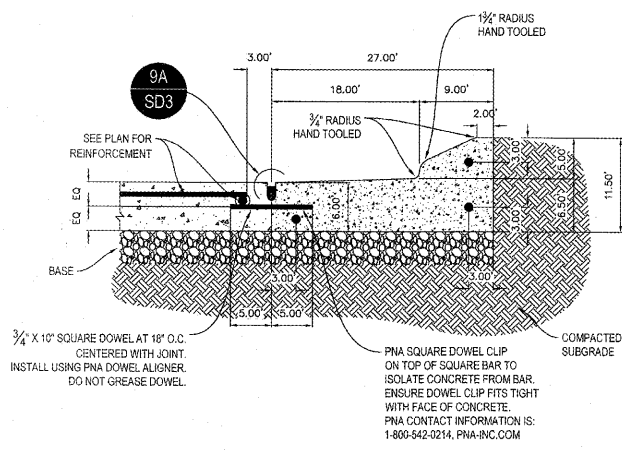


Drawing name: \\192-168-111-11\ecraw\engineering\005031 - RaceTrac - Cartersville (E Main Street) - Cartersville_GA\CADD\CONSTR\005031 - 09 - DETAILS.dwg STANDARD DETAILS - 1 Sep 05 09 7:56am by: tadd anderson



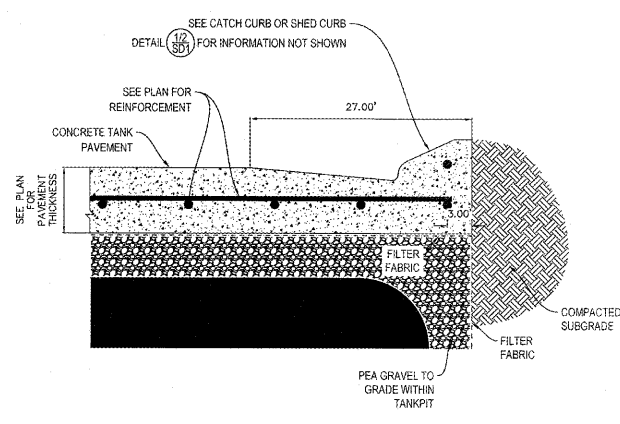
CATCH CURB DETAIL @ CONCRETE SLAB N.T.S.

1. CURB CONSTRUCTION AND CONTRACTION JOINTS LOCATIONS NOT TO EXCEED 10 FEET. SAWCUT CONTRACTION JOINTS 1/8\"/>



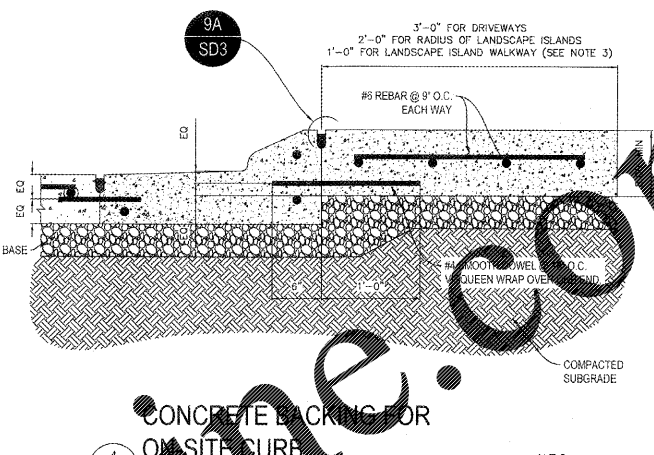
SHED CURB DETAIL @ CONCRETE SLAB N.T.S.

1. SEE NOTE ONE ON DETAIL 1/SD1 FOR CONSTRUCTION AND CONTRACTION JOINTS INFORMATION.
2. USE DETAIL WHEN ADJACENT PAVEMENT SLOPES AWAY FROM CURBING.



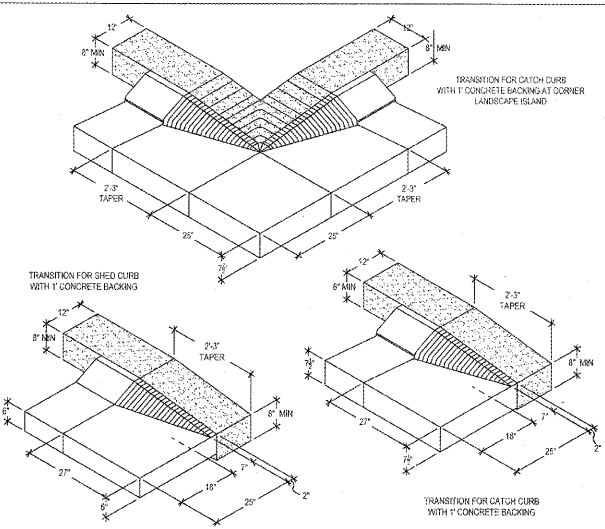
TANK AREA CURB DETAIL N.T.S.

1. SEE NOTE ONE ON DETAIL 1/SD1 FOR CONSTRUCTION AND CONTRACTION JOINTS INFORMATION.
2. THIS CURB TYPE IS TO BE USED ALONG THE CURB LINE ADJACENT TO THE TANK PAVEMENT. SEE PLAN FOR LOCATION.



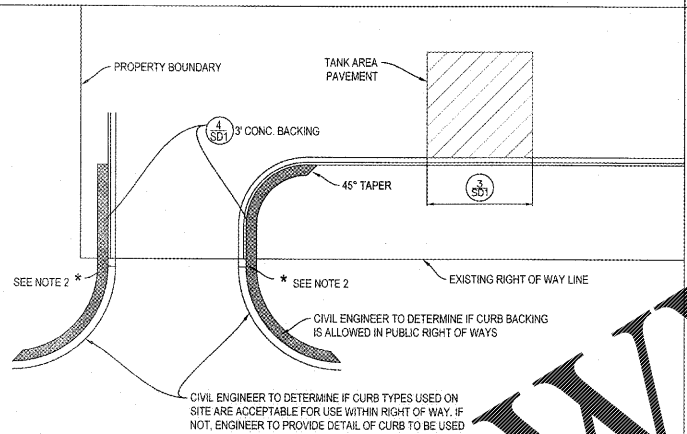
CONCRETE BACKING FOR ON SITE CURB N.T.S.

1. SLOPE ONE SIDE OF TANK PIT FOR CONSTRUCTION AND CONTRACTION JOINTS INFORMATION.
2. THREE FOOT BACKING IS TO BE USED ALONG THE RADIUS OF DRIVEWAYS.
3. TWO FOOT BACKING IS TO BE USED ALONG THE RADIUS OF LANDSCAPE ISLANDS WITHIN HIGH TRAFFIC AREAS. ONE (1) FOOT BACKING IS TO BE USED AS A PEDESTRIAN WALKWAY WITHIN LANDSCAPE ISLANDS.
4. LANDSCAPE ISLANDS HAVE TO BE INCREASED, DUE TO THE ONE (1) FOOT BACKING, TO MEET SQUARE FOOTAGE REQUIREMENTS AND PARKING SPACES ARE LOST. ONE (1) FOOT BACKING WILL NOT BE USED IN THOSE AREAS.
5. SEE PLAN FOR LOCATIONS FOR CURB BACKING.



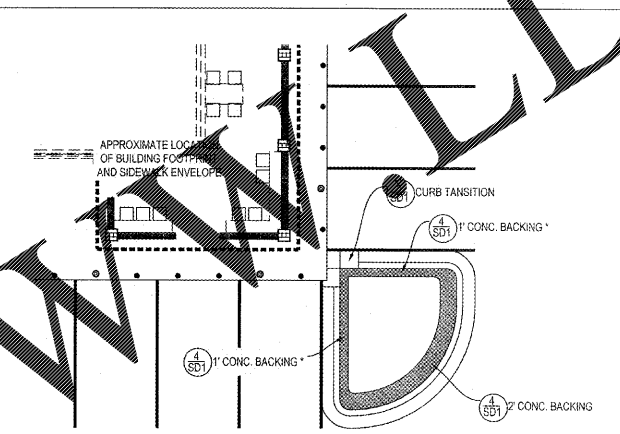
CURB TRANSITION DETAILS N.T.S.

1. SEE SITE PLAN FOR EXACT LOCATIONS



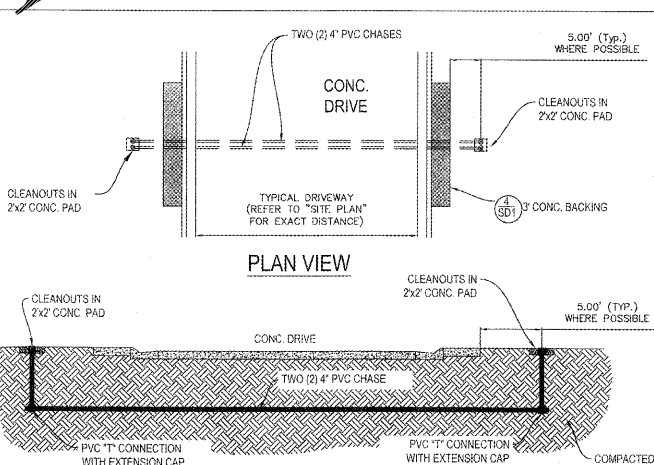
CURB LAYOUT PLAN VIEW N.T.S.

1. REFER TO 'SITE PLAN' FOR EXACT LOCATIONS OF DIFFERING CURB TYPES.
2. **RACETRAC CONSTRUCTION PROJECT MANAGER TO COORDINATE WITH CONCRETE SUBCONTRACTOR TO DETERMINE BEST TRANSITION METHOD BETWEEN DIFFERING CURB TYPES.



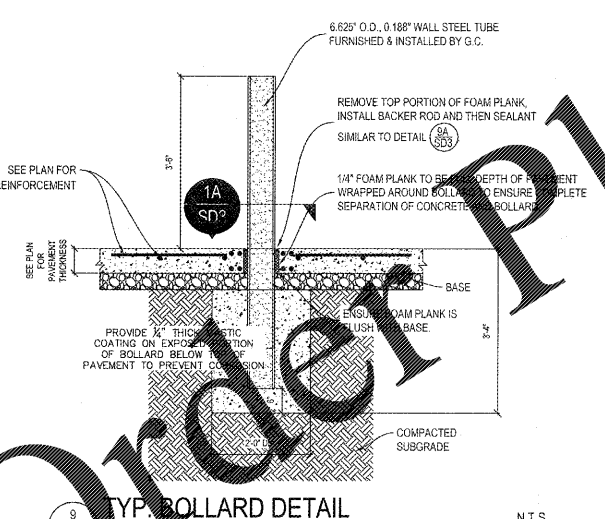
CONCRETE BACKING PLAN VIEW N.T.S.

1. REFER TO 'SITE PLAN' FOR EXACT LOCATIONS OF THE DIFFERING CURB TYPES.
2. *IF LANDSCAPE ISLANDS HAVE TO BE INCREASED, DUE TO THE ONE (1) FOOT BACKING, TO MEET SQUARE FOOTAGE REQUIREMENTS AND PARKING SPACES ARE LOST. ONE (1) FOOT BACKING WILL NOT BE USED IN THOSE AREAS. REFER TO SITE PLAN FOR EXACT LOCATIONS.



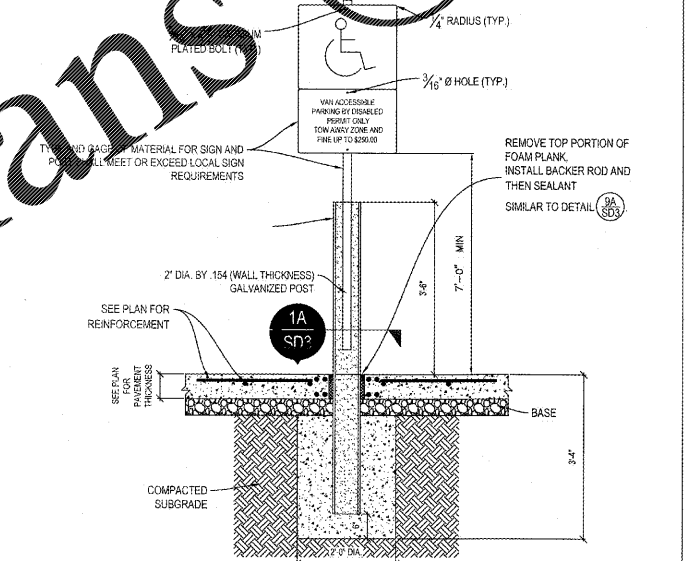
PVC CHASE DETAIL N.T.S.

1. PVC CHASE TO BE PLACED UNDER ALL DRIVEWAYS. (REFER TO 'SITE PLAN' FOR EXACT LOCATIONS)
2. CHASES ARE NOT TO BE USED FOR IRRIGATION INSTALLED WITH THIS DEVELOPMENT. IRRIGATION SLEEVES WILL BE SEPARATE. REFER TO UTILITY PLAN AND SHEET 'L.2.1' FOR IRRIGATION SLEEVE LOCATIONS.



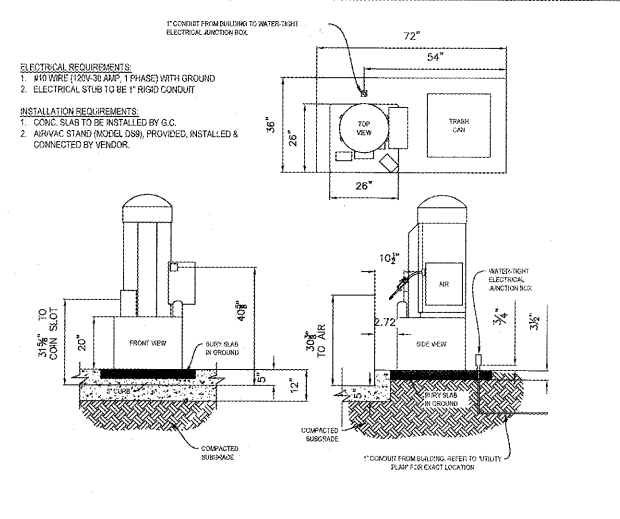
TYP. BOLLARD DETAIL N.T.S.

1. BOLLARD POSTS TO BE PLUMB AND ALIGNED IN A STRAIGHT LINE AND FILLED WITH CONCRETE.
2. TOPS TO BE GROUND SMOOTH W/ SQUARE EDGE, THE PRIMED WITH 'END RUST' BY DURO AND PAINTED WITH INDUSTRIAL OIL BASED ENAMEL. COLOR TO MATCH DECORATIVE LIGHT POLES.
3. REFER TO PAVING PLAN FOR EXACT CONCRETE THICKNESS.
4. REFER TO PAVING PLAN FOR CONCRETE COMPRESSIVE STRENGTH & SUBGRADE COMPACTION REQUIREMENTS.



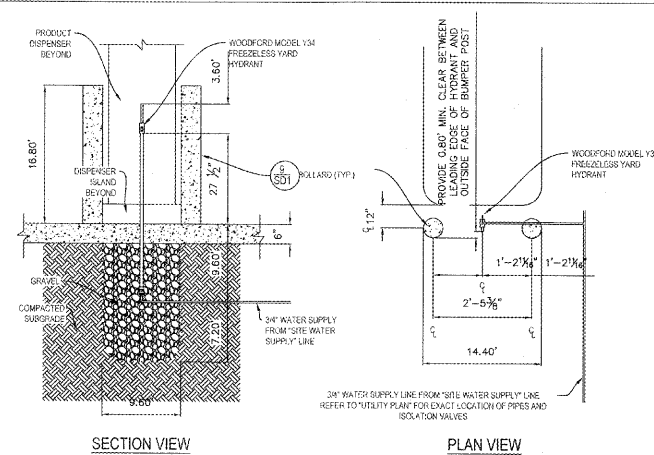
TYP. HANDICAP SIGNAGE DETAIL N.T.S.

1. REFER TO LOCAL JURISDICTION REQUIREMENTS FOR SPECIFIC DETAILS.
2. CONTRACTOR SHALL VERIFY ALL THE REQUIRED INFORMATION NECESSARY AT EACH SIGN WITH LOCAL AUTHORITIES PRIOR TO PURCHASING.



AIR/VAC SERVICE DETAIL N.T.S.

1. SECURE VALVE TO PAD W/ TWO (2) 29-0450 ANGLE BRACKETS AND FOUR (4) 1/2\"/>



YARD HYDRANT DETAIL N.T.S.

1. SEE 'SITE PLAN' FOR EXACT LOCATIONS.
2. REFER TO PAVING PLAN FOR EXACT CONCRETE THICKNESS.
3. REFER TO PAVING PLAN FOR CONCRETE COMPRESSIVE STRENGTH & SUBGRADE COMPACTION REQUIREMENTS.

WWW.LDILLIEME.COM

Order Plans @

NO.	REVISIONS	DATE	BY
1	CITY COMMENTS	8/31/18	TAA
2	CITY COMMENTS	8/31/18	TAA
3	CITY COMMENTS	9/05/18	TAA

PREPARED IN THE OFFICE OF:	LDILLIEME ENGINEERING
2018-2019	4075 CORPORATE WAY, SUITE 400 DUBLIN, GEORGIA 31008 WWW.LDILLIEME.COM

FOR INFORMATIONAL PURPOSES ONLY

THESE PLANS ARE SUBJECT TO FEDERAL COPYRIGHT LAWS. WITHOUT THE EXPRESS WRITTEN PERMISSION OF RACETRAC PETROLEUM, INC. IS PROHIBITED.

STANDARD DETAILS - 1	JOB NO. 005031
RACETRAC MARKET	
1328 E. MAIN STREET	
CARTERSVILLE, BARTOW COUNTY, GEORGIA	
LAND LOT 300.4TH DISTRICT, 3RD SECTION, PARCEL 0399-0300-001	
DATE 03/28/2018	
SCALE 1" = 30'	
DRAWN MAT	

SHEET NO	REV
SD-1	