

Drawing name: L:\000031 - RaceTrac - Cartersville (E Main Street)_GACADD\CONSTR\0050031 - 03 - E&S.dwg EROSION CONTROL PLAN - PHASE 3 Oct 25, 2018 2:28pm by: trad.anderson

24 HOUR CONTACT:
MR. MARK MCGINNIS - 678.773.7063
RACETRAC PETROLEUM, INC.

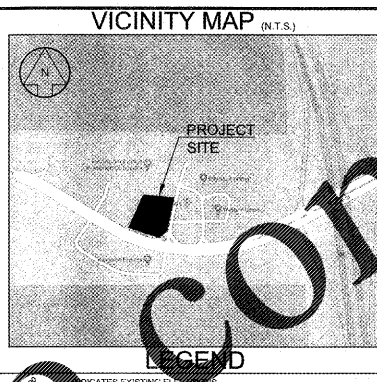
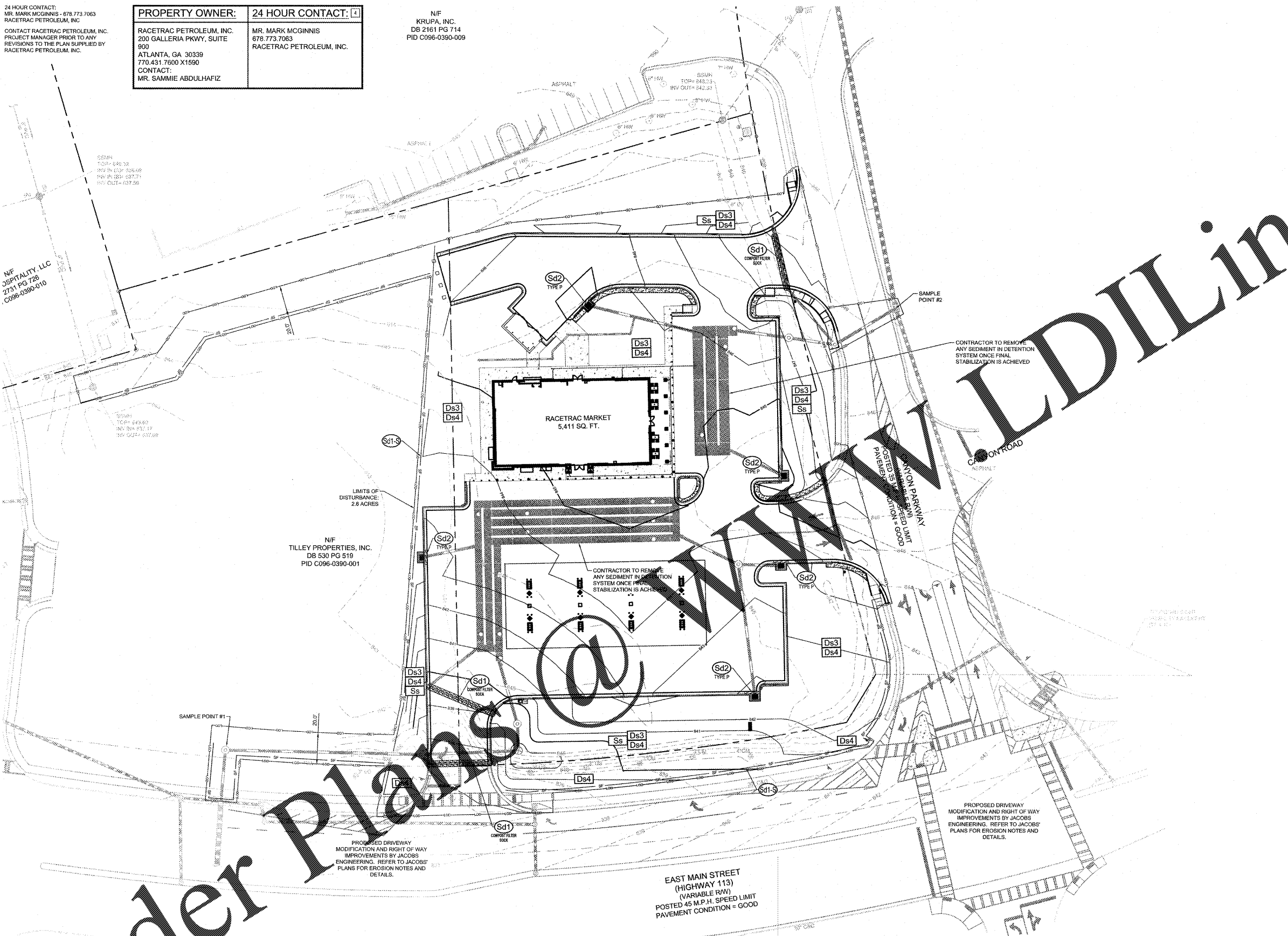
CONTACT RACETRAC PETROLEUM, INC.
PROJECT MANAGER PRIOR TO ANY
REVISIONS TO THE PLAN SUPPLIED BY
RACETRAC PETROLEUM, INC.

PROPERTY OWNER:	24 HOUR CONTACT:
RACETRAC PETROLEUM, INC. 200 GALLERIA PKWY, SUITE 900 ATLANTA, GA 30339 770.431.7600 X1590 CONTACT: MR. SAMMIE ABDULHAZIZ	MR. MARK MCGINNIS 678.773.7063 RACETRAC PETROLEUM, INC.

N/F
KRUPA, INC.
DB 2161 PG 714
PID C096-0390-009

N/F
OSPITALITY, LLC
2731 PG 726
C096-0390-010

N/F
TILLEY PROPERTIES, INC.
DB 530 PG 519
PID C096-0390-001



LEGEND

	INDICATES EXISTING ELEVATIONS
	PROPOSED FINISHED GRADES
	SPOT ELEVATION AT FINISHED GRADE
	INDICATES TO STRUCTURE
	INDICATES FLOW LINE ELEVATION
	WATER LINE TO EXISTING SERVICE OR WELL
	WATER LINE FOR IRRIGATION
	4" SANITARY SEWER LINE TO EXISTING SANITARY SEWER MANHOLE OR SEPTIC TANK
	BURIED ELECTRICAL SERVICE FROM NEAREST EXISTING UTILITY POLE
	TELEPHONE SERVICE FROM NEAREST TELEPHONE POLE RUN UNDERGROUND IN CONDUIT
	CONCRETE CURB (SEE SHEET SD-1)
	DISPENSER NUMBER
	DISPENSER PRODUCT I.D.
	PROPOSED PUBLIC TELEPHONE (SEE SHEET SD-1)
	WEATHERPROOF ELECTRICAL OUTLET
	EMERGENCY SHUT OFF SWITCH
	AREA LIGHT LOCATION (SEE SHEET SD-4 FOR DETAILS)
	STREET LIGHT LOCATION (SEE SHEET SD-4 FOR DETAILS)
	SPIDER LIGHTS (WHERE APPLICABLE)
	REVISION INDICATOR
	HIGH POINT
	INDICATES PROPOSED 6" CONCRETE AREA
	PROPOSED AIR/WATER STAND (SEE SHEET SD-1)
	BUMPER POST (SEE SHEET SD-1)
	ELEVATION AT TOP OF ISLAND
	EXISTING ELEMENTS
	PROPOSED ELEMENTS
	P.P. POWER POLE
	M.H. MANHOLE
	S.S. SANITARY SEWER
	S.P.M.H. SUBMERGED PUMP MANHOLE
	D.I. DROP INLET
	TPF TREE PROTECTION FENCE
	LOD LIMITS OF DISTURBANCE
	T.W. TOP OF WALL
	B.W. BOTTOM OF WALL
	H.P. HIGH POINT
	P.B. PIPE BEND

TAA	NO.	DATE	BY
7	RACETRAC & CITY COMMENTS	10/26/18	TAA
6	STRIPING UPDATE & CITY COMMENTS	10/16/18	TAA
5	CARTERSVILLE ELECTRIC COMMENTS	9/24/18	TAA
4	CITY COMMENTS	9/18/18	TAA
3	CITY COMMENTS	9/05/18	TAA
2	CITY COMMENTS	8/08/18	TAA

PREPARED IN THE OFFICE OF:

LECRAW ENGINEERING, INC.
200 GALLERIA PARKWAY, SUITE 900
ATLANTA, GEORGIA 30339
PHONE: 678-688-8338 FAX: 770-441-0298
WWW.LECRAWENGINEERING.COM

Professional Engineer Seal for Mark S. Lecraw, No. 3885, State of Georgia, dated 10/26/18.

CERTIFICATION STATEMENT

I CERTIFY THAT THE PERMITTEE'S EROSION, SEDIMENTATION AND POLLUTION CONTROL PLAN PROVIDES FOR AN APPROPRIATE AND COMPREHENSIVE SYSTEM OF BEST MANAGEMENT PRACTICES REQUIRED BY THE GEORGIA WATER QUALITY CONTROL ACT AND THE DOCUMENT "MANUAL FOR EROSION AND SEDIMENT CONTROL IN GEORGIA" PUBLISHED BY THE STATE SOIL AND WATER CONSERVATION COMMISSION AS OF JANUARY 1 OF THE YEAR IN WHICH LAND-DISTURBING ACTIVITY WAS PERMITTED, PROVIDES FOR THE SAMPLING OF THE RECEIVING WATER(S) OR THE SAMPLING OF STORM WATER OUTFALLS AND THAT THE DESIGNED SYSTEM OF BEST MANAGEMENT PRACTICES AND SAMPLING METHODS IS EXPECTED TO MEET THE REQUIREMENTS CONTAINED IN THE GENERAL NPDES PERMIT NO. GAR 100001.

I CERTIFY UNDER PENALTY OF THE LAW THAT THIS PLAN WAS PREPARED AFTER A SITE VISIT TO THE LOCATIONS DESCRIBED HEREIN BY MYSELF OR MY AUTHORIZED AGENT, UNDER MY SUPERVISION.

I, OR SOMEONE UNDER MY SUPERVISION, WILL INSPECT THE INSTALLATION OF THE INITIAL SEDIMENT STORAGE REQUIREMENTS AND PERIMETER CONTROL BMP'S WITHIN 7 DAYS AFTER INSTALLATION, ONCE NOTIFIED BY THE CONTRACTOR.

10/26/18
DATE

GEORGIA LICENSED PROFESSIONAL (SIGN)
MARK S. LECRAW
GEORGIA LICENSED PROFESSIONAL (PRINT)
030828
GEORGIA P.E.#
0000006928
GEORGIA EROSION CONTROL LEVEL 2 CERTIFICATION

GENERAL SITE NOTES:

- ALL BEST MANAGEMENT PRACTICES ARE TO BE IN ACCORDANCE WITH THE MANUAL FOR EROSION AND SEDIMENT CONTROL IN GEORGIA, PUBLISHED BY THE GEORGIA SOIL AND WATER CONSERVATION COMMISSION EROSION AND SEDIMENT CONTROL STANDARDS.
- TOPOGRAPHIC AND BOUNDARY SURVEY BY LECRAW ENGINEERING, INC. DATED JANUARY 10, 2018. BENCHMARK IS NOTED ON SURVEY.
- SOIL TYPES FOR ENTIRE DISTURBED AREA IS UJ/C PER NRCS WEB SOIL SURVEY
- THE ESCAPE OF SEDIMENT FROM THE SITE SHALL BE PREVENTED BY THE INSTALLATION OF EROSION AND SEDIMENTATION CONTROL MEASURES AND PRACTICES SHALL BE INSTALLED PRIOR TO OR CONCURRENT WITH LAND DISTURBING ACTIVITIES.
- EROSION AND SEDIMENTATION CONTROL MEASURES AND PRACTICES SHALL BE MAINTAINED AT ALL TIMES. IF FULL IMPLEMENTATION OF THE APPROVED PLAN DOES NOT PROVIDE FOR EFFECTIVE EROSION CONTROL, ADDITIONAL EROSION AND SEDIMENTATION CONTROL MEASURES SHALL BE IMPLEMENTED TO CONTROL OR TREAT THE SEDIMENT SOURCE. ADDITIONAL EROSION AND SEDIMENTATION CONTROL MEASURES AND PRACTICES SHALL BE INSTALLED IF DENIED NECESSARY BY ON-SITE INSPECTION.
- SEDIMENT STORAGE MAINTENANCE INDICATORS MUST BE INSTALLED IN SEDIMENT STORAGE STRUCTURES, AS REQUIRED, INDICATING THE 1/3 FULL VOLUME.
- MAINTENANCE OF ALL SOIL EROSION AND SEDIMENTATION CONTROL MEASURES AND PRACTICES, WHETHER TEMPORARY OR PERMANENT, SHALL BE AT ALL TIMES THE RESPONSIBILITY OF THE PROPERTY OWNER.
- WASHOUT OF CONCRETE DRUM AT CONSTRUCTION SITE IS PROHIBITED AND NOT ALLOWED IN WASH AREAS.

TOTAL SITE AREA = 2.03 ACRES
TOTAL DISTURBED AREA = 2.8 ACRES

1" = 30'
SCALE

0' 15' 30' 60'
SCALE: 1"=30'
NORTH ARROW

THESE PLANS ARE SUBJECT TO FEDERAL COPYRIGHT LAWS. ANY USE OF SAME WITHOUT THE WRITTEN PERMISSION OF RACETRAC PETROLEUM, INC. IS PROHIBITED.

RaceTrac
RACETRAC PETROLEUM, INC.
200 GALLERIA PKWY, SUITE 900
ATLANTA, GA 30339
(770) 431-7600

EROSION CONTROL PLAN - PHASE 3

RACETRAC MARKET	1328 E. MAIN STREET	DATE	03/28/2018
SITE	CARTERSVILLE, BARTOW COUNTY, GEORGIA	SCALE	1" = 30'
DRAWN	MAT	JOB NO.	005031
SHEET NO. ES-3.0		REV.	

EROSION CONTROL LEGEND

CODE	PRACTICE	MAP SYMBOL	CODE	PRACTICE	MAP SYMBOL	CODE	PRACTICE	MAP SYMBOL	CODE	PRACTICE	MAP SYMBOL
Ds3	DISTURBED AREA STABILIZATION (WITH MULCHING ON VEGETATION)	Ds3	Ss	SLOPE STABILIZATION	Ss	Sd1-S	SEDIMENT BARRIER (TYPE S SILT FENCE)	Sd1-S	Du	DUST CONTROL ON DISTURBED AREAS	Du
Ds4	DISTURBED AREA STABILIZATION (WITH SOODING)	Ds4	Du	DUST CONTROL ON DISTURBED AREAS	Du	Sd2-E	TEMPORARY INLET SEDIMENT TRAP (EXCAVATED INLET SEDIMENT TRAP)	Sd2-E	Sd4	TEMPORARY SEDIMENT TRAP	Sd4
Sd1-P	TEMPORARY INLET SEDIMENT TRAP (CURB INLET PROTECTION)	Sd1-P	Di	DIVERSION	Di	Sd2-SS	TEMPORARY INLET SEDIMENT TRAP (SILT SAVER)	Sd2-SS	Sd1-CFB	SEDIMENT BARRIER (COMPOST FILTER SOCK)	Sd1-CFB

SOIL SERIES:
UJ/C URBAN LAND - UDORTHERTS COMPLEX, 0 - 10% SLOPES

NOTE:
CONTRACTOR IS RESPONSIBLE FOR THE SEQUENCE AND TIMING OF ALL EROSION AND SEDIMENT CONTROL MEASURES. PHASING PLANS ARE ONLY A GENERAL GUIDE TO EROSION AND SEDIMENT CONTROL REQUIREMENTS AS DEVELOPMENT OCCURS. CONTRACTOR IS RESPONSIBLE FOR MAINTAINING ALL EROSION CONTROL MEASURES AND IMPLEMENTING ADDITIONAL MEASURES, AS NECESSARY, AT THE SOLE EXPENSE OF THE CONTRACTOR.

CSWCC Georgia Soil and Water Conservation Commission

MARK S. LECRAW
Level II Certified Design Professional

CERTIFICATION NUMBER: 0000006928
ISSUED: 03/11/2018 EXPIRES: 03/11/2021