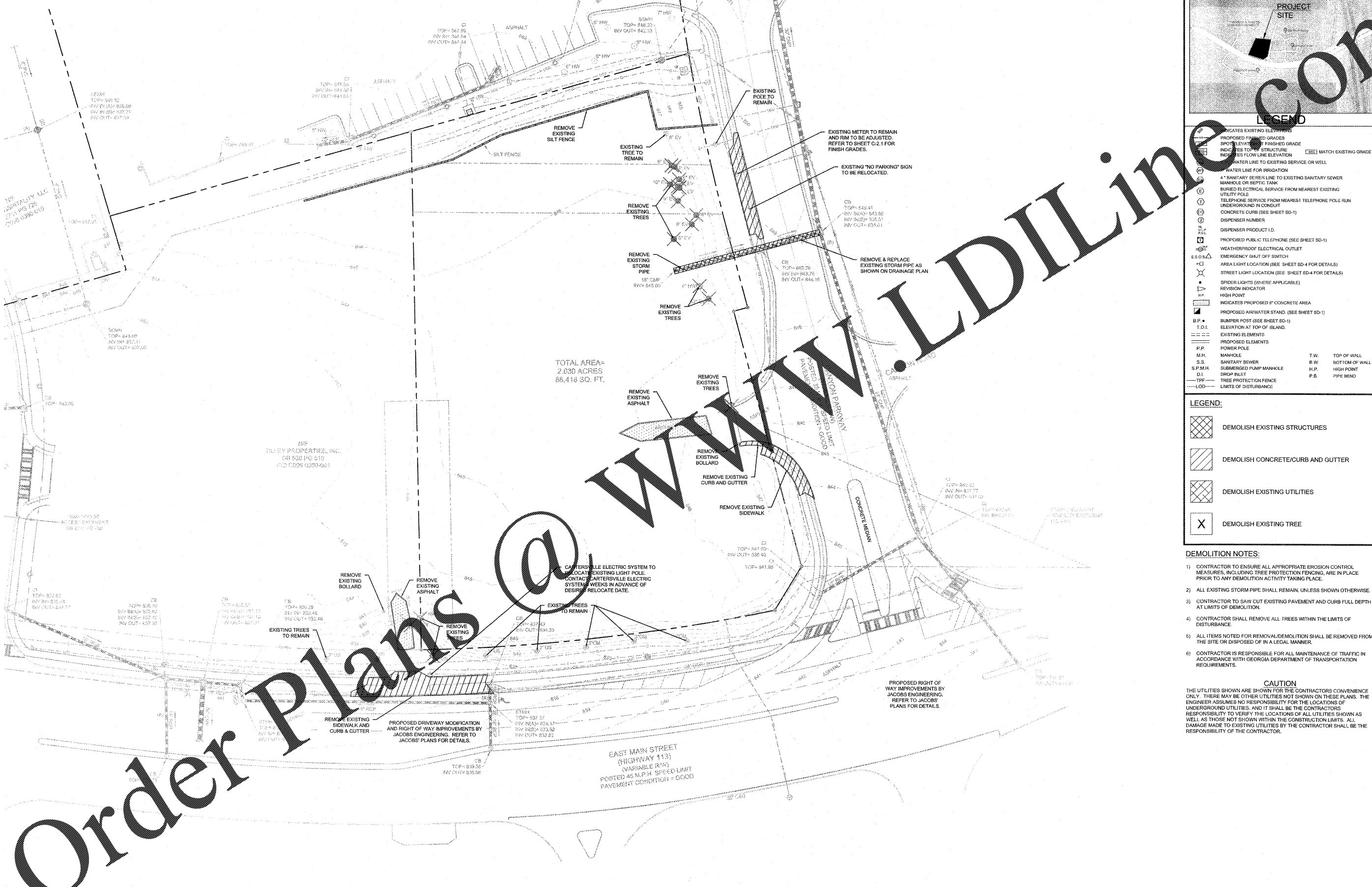


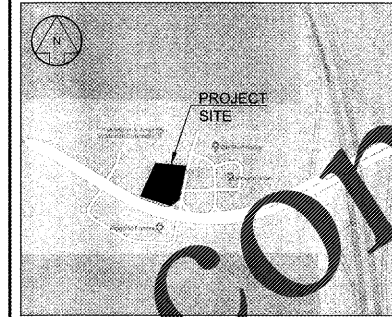
24 HOUR CONTACT:
MR. MARK MOONINIS - 678.773.7063
RACETRAC PETROLEUM, INC.
CONTACT RACETRAC PETROLEUM, INC.
PROJECT MANAGER PRIOR TO ANY
REVISIONS TO THE PLAN SUPPLIED BY
RACETRAC PETROLEUM, INC.

NIP
KRUPA, INC.
DR 2163 PG 714
PID 0096-0590-009



TOTAL AREA=
2.030 ACRES
88,418 SQ. FT.

VICINITY MAP (N.T.S.)



- LEGEND**
- INDICATES EXISTING ELEVATIONS
 - PROPOSED FINISHED GRADES
 - SHOW ELEVATION IF FINISHED GRADE
 - INDICATES TOP OF STRUCTURE
 - INDICATES FLOW LINE ELEVATION
 - WATER LINE FOR IRRIGATION
 - WATER LINE TO EXISTING SERVICE OR WELL
 - 4" SANITARY SEWER LINE TO EXISTING SANITARY SEWER MANHOLE OR SEPTIC TANK
 - BURIED ELECTRICAL SERVICE FROM NEAREST EXISTING UTILITY POLE
 - TELEPHONE SERVICE FROM NEAREST TELEPHONE POLE RUN UNDERGROUND IN CONDUIT
 - CONCRETE CURBS (SEE SHEET SD-1)
 - DISPENSER NUMBER
 - DISPENSER PRODUCT I.D.
 - PROPOSED PUBLIC TELEPHONE (SEE SHEET SD-1)
 - WEATHERPROOF ELECTRICAL OUTLET
 - EMERGENCY SHUT OFF SWITCH
 - AREA LIGHT LOCATION (SEE SHEET SD-4 FOR DETAILS)
 - STREET LIGHT LOCATION (SEE SHEET SD-4 FOR DETAILS)
 - SPIDER LIGHTS (WHERE APPLICABLE)
 - REVISION INDICATOR
 - HIGH POINT
 - INDICATES PROPOSED 8" CONCRETE AREA
 - PROPOSED AIR/WATER STAND (SEE SHEET SD-1)
 - B.P. BUMPER POST (SEE SHEET SD-1)
 - T.O.I. ELEVATION AT TOP OF ISLAND
 - EXISTING ELEMENTS
 - PROPOSED ELEMENTS
 - P.P. POWER POLE
 - M.H. MANHOLE
 - S.S. SANITARY SEWER
 - S.P.M.H. SUBMERGED PUMP MANHOLE
 - D.I. DROP INLET
 - TFP TREE PROTECTION FENCE
 - LOD LIMITS OF DISTURBANCE
 - T.W. TOP OF WALL
 - B.W. BOTTOM OF WALL
 - H.P. HIGH POINT
 - F.B. PIPE BEND

- LEGEND:**
- DEMOLISH EXISTING STRUCTURES
 - DEMOLISH CONCRETE/CURB AND GUTTER
 - DEMOLISH EXISTING UTILITIES
 - DEMOLISH EXISTING TREE

- DEMOLITION NOTES:**
- CONTRACTOR TO ENSURE ALL APPROPRIATE EROSION CONTROL MEASURES, INCLUDING TREE PROTECTION FENCING, ARE IN PLACE PRIOR TO ANY DEMOLITION ACTIVITY TAKING PLACE.
 - ALL EXISTING STORM PIPE SHALL REMAIN, UNLESS SHOWN OTHERWISE.
 - CONTRACTOR TO SAW CUT EXISTING PAVEMENT AND CURB FULL DEPTH AT LIMITS OF DEMOLITION.
 - CONTRACTOR SHALL REMOVE ALL TREES WITHIN THE LIMITS OF DISTURBANCE.
 - ALL ITEMS NOTED FOR REMOVAL/DEMOLITION SHALL BE REMOVED FROM THE SITE OR DISPOSED OF IN A LEGAL MANNER.
 - CONTRACTOR IS RESPONSIBLE FOR ALL MAINTENANCE OF TRAFFIC IN ACCORDANCE WITH GEORGIA DEPARTMENT OF TRANSPORTATION REQUIREMENTS.

CAUTION
THE UTILITIES SHOWN ARE SHOWN FOR THE CONTRACTORS CONVENIENCE ONLY. THERE MAY BE OTHER UTILITIES NOT SHOWN ON THESE PLANS. THE ENGINEER ASSUMES NO RESPONSIBILITY FOR THE LOCATIONS OF UNDERGROUND UTILITIES, AND IT SHALL BE THE CONTRACTORS RESPONSIBILITY TO VERIFY THE LOCATIONS OF ALL UTILITIES SHOWN AS WELL AS THOSE NOT SHOWN WITHIN THE CONSTRUCTION LIMITS. ALL DAMAGE MADE TO EXISTING UTILITIES BY THE CONTRACTOR SHALL BE THE RESPONSIBILITY OF THE CONTRACTOR.

TAA	DATE	BY
TAA 10/26/18	10/26/18	
TAA 10/16/18	10/16/18	
TAA 9/24/18	9/24/18	
TAA 9/18/18	9/18/18	
TAA 9/05/18	9/05/18	
TAA 8/08/18	8/08/18	

7 RACETRAC & CITY COMMENTS
6 STRIPING UPDATE & CITY COMMENTS
5 CARTERSVILLE ELECTRIC COMMENTS
4 CITY COMMENTS
3 CITY COMMENTS
2 CITY COMMENTS
NO. REVISIONS



THESE PLANS ARE SUBJECT TO FEDERAL COPYRIGHT LAWS. ANY USE OF SAME WITHOUT THE WRITTEN PERMISSION OF RACETRAC PETROLEUM, INC. IS PROHIBITED.

RaceTrac
RACETRAC PETROLEUM, INC.
200 GALLERIA PKWY, SUITE 900
ATLANTA, GA 30339
(770) 431-7600

DEMOLITION PLAN	
RACETRAC MARKET	
1328 E. MAIN STREET	
CARTERSVILLE BARTOW COUNTY, GEORGIA	
PARCEL 100, 4TH DISTRICT, 3RD SECTION, PARCEL C09A000001	
SCALE 1" = 30'	DATE 03/28/2018
DRAWN MAT	JOB NO. 005031

D-1.0 SHEET NO. REV.

Drawing name: L:\005031 - RaceTrac - Cartersville (E Main Street)_GACAD\CONSTR\005031 - 01 - DEMO.dwg DEMOLITION PLAN Oct 25, 2018 2:24pm by: todd.anderson

Order Plans @ www.LDILine.com