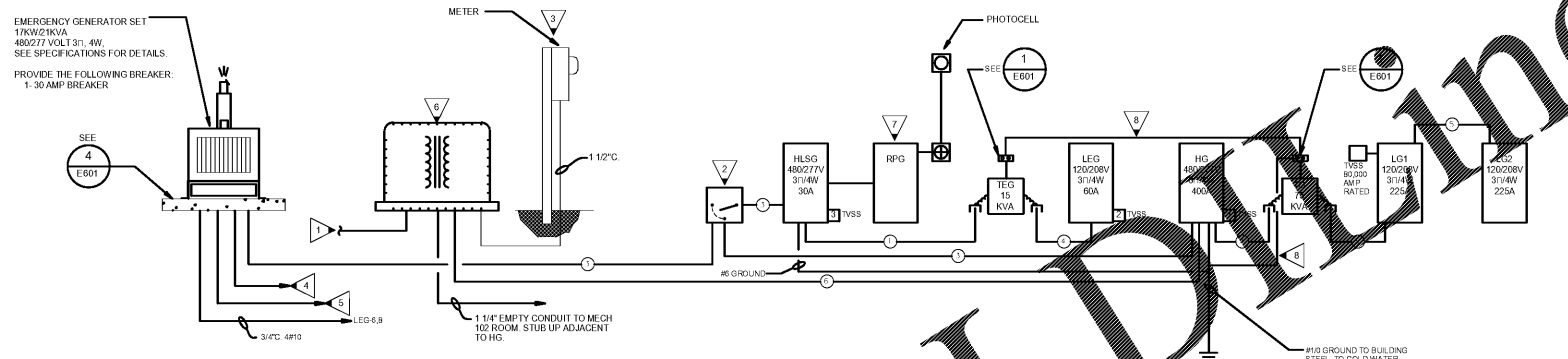
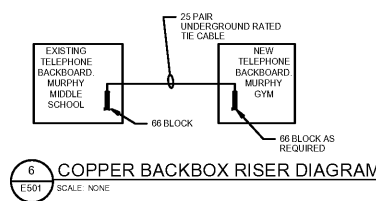
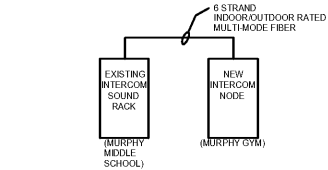
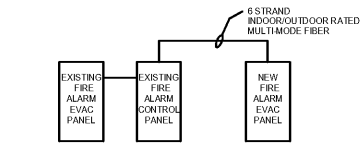


- KEYED NOTES:**
- 1 UTILITY COMPANY PRIMARY. COORDINATE REQUIREMENTS WITH UTILITY PROVIDER.
 - 2 30A/3 PHASE LIFE SAFETY AUTOMATIC TRANSFER SWITCH.
 - 3 METER SET ON 6" CHANNEL IRON PAINTED TO MATCH TRANSFORMER. ROUTE 1 1/2" GALVANIZED RIGID STEEL CONDUIT TO TRANSFORMER.
 - 4 1 1/4" C. TO REMOTE GENERATOR ANNUNCIATOR SEE MANUFACTURER'S PUBLISHED DATA FOR # OF CONDUCTORS REQUIRED. LOCATE REMOTE ANNUNCIATOR AS SHOWN ON PLANS.
 - 5 2-1" C. TO EACH AUTOMATIC TRANSFER SWITCH FOR CONTROL WIRES.
 - 6 UTILITY COMPANY PAD MOUNTED TRANSFORMER. SEE E-101 FOR EXACT LOCATION. ELECTRICAL CONTRACTOR SHALL PROVIDE METERING PER UTILITY COMPANY REQUIREMENTS. CONCRETE PAD IS BY GEORGIA POWER.
 - 7 SEE RELAY PANEL SCHEDULE IN THIS SHEET.
 - 8 1 1/2" C. 1-#3/8" ROUTED UNDERGROUND. ROUTING SHOWN IS SCHEMATIC.

TVSS LEGEND: SEE SPECIFICATION FOR DETAILS

- 1 MAIN DISTRIBUTION PANEL (277/480 VOLTS, 3 PHASE) - 300,000 AMP RATED
- 2 DISTRIBUTION PANEL (120/208 VOLTS, 3 PHASE) - 80,000 AMP RATED



FEEDER SCHEDULE

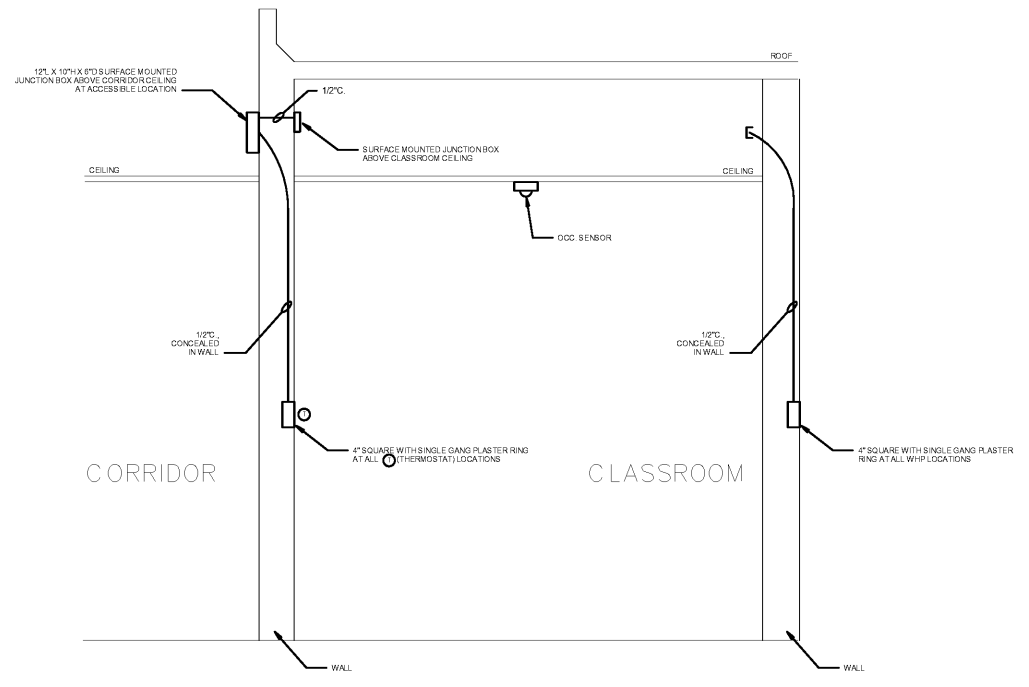
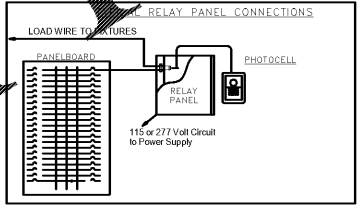
LOCATION	AMPERES	CONDUIT	CONDUCTORS
3	30	3/4"	3#10, 1#12
4	100	1 1/2"	3#2, 1#8G
5	60	3/4"	4#10, 1#10G
6	60	1"	4#8, 1#8G
7	225A	3"	4#4/0, 1#2G
8	400A	4"	4-500 MCM

LOW VOLTAGE SWITCHING SCHEDULE
RELAY PANEL - RFG

RELAY	SWITCH	CIRCUIT	LIGHTING CONTROLLER
1	TC-PE	PANELBOARD	LED BUILDING LIGHTS
2		SPARE	SPARE
3		SPARE	SPARE
4		SPARE	SPARE

REMARKS:

- LIGHTING CONTROL SYSTEM RELAY PANEL SHALL BE THE USER'S RESPONSIBILITY FOR APPROVED BY THE OWNER.
- "DIP" INDICATES TIME DELAY CONTACTS. COORDINATE EXACT TIME DELAY WITH THE OWNER.
- PROVIDE ETHERNET NETWORK CONNECTIONS TO THE RELAY PANEL.
- PROVIDE SWITCHING DEVICES (SWITCHES) TO THE RELAY PANEL.
- PROVIDE BUILDING WIRE (BULW) TO THE RELAY PANEL.
- PROVIDE INPUT CARDS AS NOTED.
- RELAYS SHALL BE RATED TO THE LOAD.
- LOCATE RFG ADJACENT TO PANEL.
- PROVIDE EMERGENCY OVERRIDE RELAY BRINGS ON ALL LIGHTS IN THIS PANEL.



dickinson ARCHITECTS
Architecture/Interior/Planning
771 Broad Street, Suite 200
Augusta, Georgia 31401
Tel: 706.722.7488
www.dickinsonarchitects.com

Member of the American Institute of Architects

PROJECT TITLE:
MURPHEY MIDDLE SCHOOL P.E. BUILDING
PROJECT #
B-17-005-3756.1

REVISIONS

REV #	DATE	APPRD BY	REVISION
1	11/02/18	MAP	STATE FINAL
2	11/20/18	MAP	ISSUE FOR BID



DA PROJECT NUMBER & NAME:
1707.1

DRAWING TITLE:
POWER RISER DIAGRAM AND PANEL BOARD SCHEDULE

DRAWING NO.:
E501

Order Plans @ WWW.LDW.com