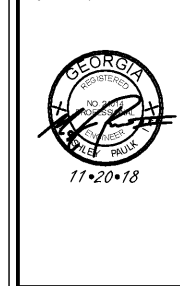


PROJECT TITLE:  
**MURPHEY  
MIDDLE  
SCHOOL P.E.  
BUILDING  
PROJECT #  
B-17-005-3756.1**

REVISIONS			
REV	DATE	APPRD BY	REVISION
1	11/02/18	MAP	STATE FINAL
2	11/20/18	MAP	ISSUE FOR BLD



DA PROJECT NUMBER & NAME:  
1707.1  
DRAWING TITLE:  
**POWER PLAN**

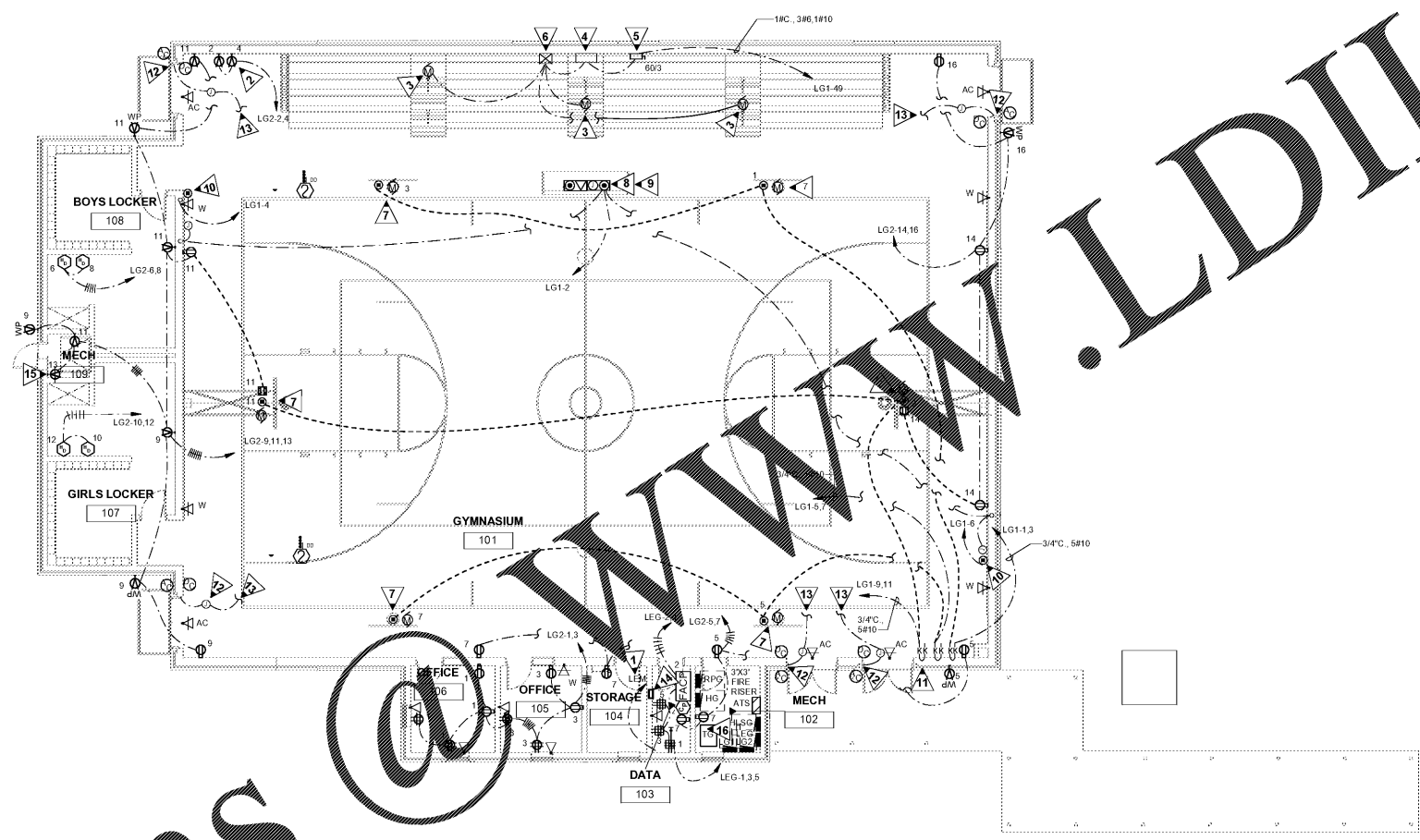
DRAWING NO:  
**E301**

**GENERAL NOTES:**

- COORDINATE EXACT LOCATION OF ALL WALL MOUNTED DEVICES WITH ARCHITECTURAL INTERIOR ELEVATIONS.
- COORDINATE LOCATION OF HAND DRYERS WITH ARCHITECTURAL PLANS.
- HORIZONTAL CIRCUITS ARE SHOWN AS NOTED. PROVIDE ALL BRANCH CIRCUIT CONDUIT / CONDUCTORS / TRAVELERS AS NECESSARY TO CONNECT ALL DEVICES SHOWN ON THE CIRCUIT. PROVIDE DEDICATED NEUTRALS FOR ALL CIRCUITS.

**KEYED NOTES:**

- PROVIDE 1" x 1/8" GROUND ROUTED TO GROUND BAR IN PANEL INDICATED. PROVIDE GROUND BAR AND GROUND ALL RACKS IN THIS SPACE.
- ELECTRIC WATER COOLER. SEE DETAIL 2E100.
- 1/2 HP, 120 VOLT, SINGLE PHASE MOTOR FURNISHED WITH BLEACHERS.
- 12" X 12" X 1/4" DEEP JUNCTION BOX WITH SCREW COVER. MOUNT 2" ABOVE FINISHED FLOOR. FURNISHED AND INSTALLED BY ELECTRICAL.
- NON-FUSED DISCONNECT SWITCH. NEMA ONE ENCLOSURE. FURNISHED AND INSTALLED BY ELECTRICAL.
- CONTACTOR, NEMA ONE ENCLOSURE FURNISHED WITH BLEACHERS. INSTALLED AND CONNECTED BY ELECTRICAL.
- SEE BASKETBALL BACKBOARD MANUFACTURERS PUBLISHED DATA FOR ELECTRICAL ROUGHING-IN REQUIREMENTS. VERIFY EXACT LOCATION. DUPLEX RECEPTACLE WHERE SHOWN IS 120V POWER FOR WIRELESS SHOT CLOCK. PROVIDE UNSWITCHED CONDUCTOR.
- LOCATE SCOREBOARD CONTROLLER, POWER AND MICROPHONE OUTLETS IN FSR FLUSH FLOOR BOX.
- PROVIDE FSR A/V FLUSH FLOOR BOX. SEE SPECIFICATIONS. SEE E-402 FOR LOCAL SOUND SYSTEM CONDUIT REQUIREMENTS. IN ADDITION, ROUTE 3/4" C. FROM FLOOR BOX TO ABOVE ACCESSIBLE CEILING FOR DATA CABLES.
- SCOREBOARD CONTROL RECEPTACLES FURNISHED WITH SCOREBOARD, INSTALLED AND CONNECTED BY ELECTRICAL.
- KEY OPERATED SWITCHES (6) FOR CONTROLLING BASKETBALL BACKBOARDS (TYPICAL). SEE MANUFACTURERS PUBLISHED DATA FOR ELECTRICAL ROUGHING IN REQUIREMENTS. COORDINATE LOCATION OF KEYED SWITCHES WITH ARCHITECT PRIOR TO ROUGHING IN.
- PROVIDE 120 VOLT RECEPTACLE NEAR DOOR ACCESS CONTROLS JUNCTION BOX TO SERVE POWER SUPPLY FOR DOOR ACCESS SYSTEM. ROUTE 3/4" C. FROM JUNCTION BOX TO DOOR FRAME. SEE DETAIL #4E801.
- CONNECT TO NEAREST 120 VOLT GENERAL RECEPTACLE CIRCUIT.
- 12" X 12" X 1/4" DEEP JUNCTION BOX SCREW COVER. MOUNT 2" ABOVE FINISHED FLOOR. FURNISHED AND INSTALLED BY ELECTRICAL. STUB UP TWO (2) 1-1/2"
- PROVIDE 120 VOLT DEDICATED CIRCUIT TO SERVE IRRIGATION CONTROL PANEL. COORDINATE EXACT LOCATION WITH CIVIL PRIOR TO ROUGHING IN.
- TRANSFORMER TEG SHALL BE WALL MOUNTED ABOVE TRANSFORMER TEG. PROVIDE 4 MINIMUM 1 1/2" X 1 7/8" 12 GA CHANNEL IRONS WITH SUSPENSION RODS AS REQUIRED TO WALL MOUNT.



**1 POWER PLAN**  
E301 SCALE: 1/8" = 1'-0"

Order Plans

www.LDILine.com