



Architecture Interior Design Planning  
771 Broad Street, Suite 100  
Augusta, Georgia 31401  
724-7488  
www.dickinsonarchitects.com

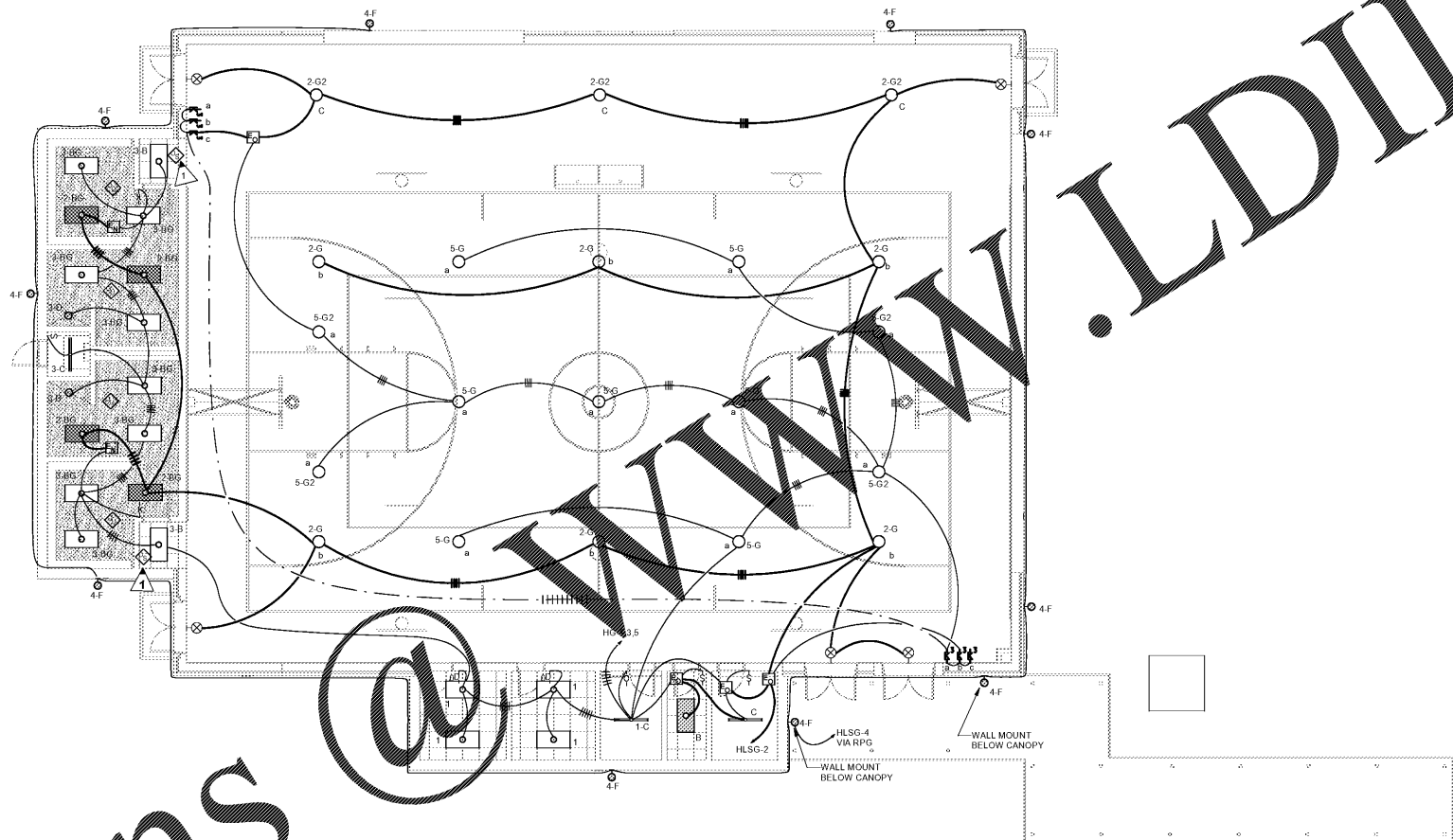
Member of the American Institute of Architects

THIS DRAWING IS THE PROPERTY OF Dickinson Architects, P.C. AND IS NOT TO BE REPRODUCED OR COPIED IN WHOLE OR IN PART OR FOR ANY PURPOSE WITHOUT THE WRITTEN PERMISSION OF Dickinson Architects, P.C. ANY VIOLATION OF THESE TERMS SHALL BE CONSIDERED A BREACH OF CONTRACT AND WILL BE PROSECUTED TO THE FULL EXTENT OF THE LAW.

- ATTIC STOCK:**  
 1. PROVIDE ATTIC STOCK FOR THE FOLLOWING:  
 ↓ 2 UNITS  
 ↓ 2 UNITS  
 ↓ 2 UNITS  
 ↓ 2 UNITS  
 ⊕ 2 UNITS  
 ⊕ 4 UNITS  
 ⊕ 3 UNITS  
 ⊕ 3 UNITS
- TYPE 'A' FIXTURE - 3 UNITS  
 TYPE 'B' FIXTURE - 3 UNITS  
 TYPE 'BG' FIXTURE - 3 UNITS  
 TYPE 'C' FIXTURE - 6 UNITS  
 TYPE 'F' FIXTURE - 2 UNITS  
 TYPE 'G' FIXTURE - 2 UNITS  
 TYPE 'G2' FIXTURE - 1 UNIT  
 TYPE 'H' FIXTURE - 2 UNITS

**KEYED NOTES:**  
 ▷ TYPE 'G' FIXTURE SHALL BE CONTROLLED BY ADJACENT CEILING MOUNTED SENSOR

- GENERAL NOTES:**
- ALL LIGHT FIXTURES SHALL BE TYPE A UNLESS NOTED OTHERWISE.
  - ALL EXIT LIGHTS AND EMERGENCY RELAYS SHALL BE CONNECTED TO AN UNSWITCHED HOT AND NOT TO A SWITCH LEG.
  - COORDINATE EXACT LOCATIONS OF ALL WALL MOUNTED DEVICES WITH ARCHITECTURAL INTERIOR ELEVATIONS.
  - LOWER CASE LETTERS INDICATE FIXTURES BEING CONTROLLED WITH CORRESPONDING SWITCH.
  - EXTERIOR CIRCUIT TO BE ROUTED CONCEALED ON INTERIOR WALLS INSIDE BUILDING.

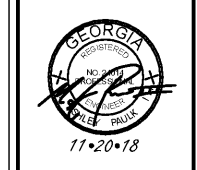


1 LIGHTING PLAN - MURPHEY GYM  
 E201 SCALE: 1/8" = 1'-0"

Order Plans

PROJECT TITLE:  
**MURPHEY  
 MIDDLE  
 SCHOOL P.E.  
 BUILDING**  
 PROJECT #  
 B-17-005-3756.1

REVISIONS			
REV #	DATE	APPRD BY	REVISION
1	11/02/18	MAP	STATE FINAL
2	11/20/18	MAP	ISSUE FOR BID



DA PROJECT NUMBER & NAME:  
 1707.1  
 DRAWING TITLE:  
**LIGHTING PLAN -  
 MURPHEY GYM**

**EDC** ELECTRICAL ENGINEERS  
 1201 BROAD ST., SUITE 1-A  
 AUGUSTA, GA 30901  
 PH: (706) 724-3551  
 FAX: (706) 724-8507  
 EDC PROJECT #: 18004

DRAWING NO:  
**E201**