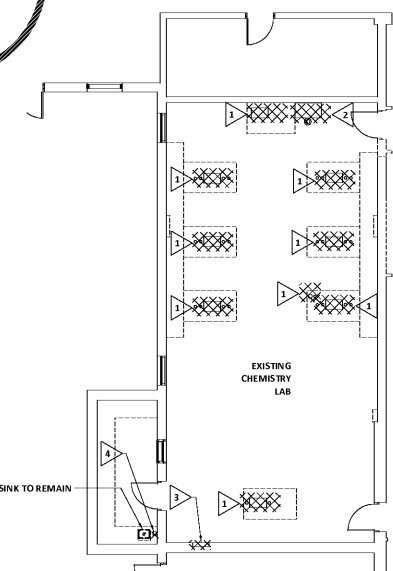
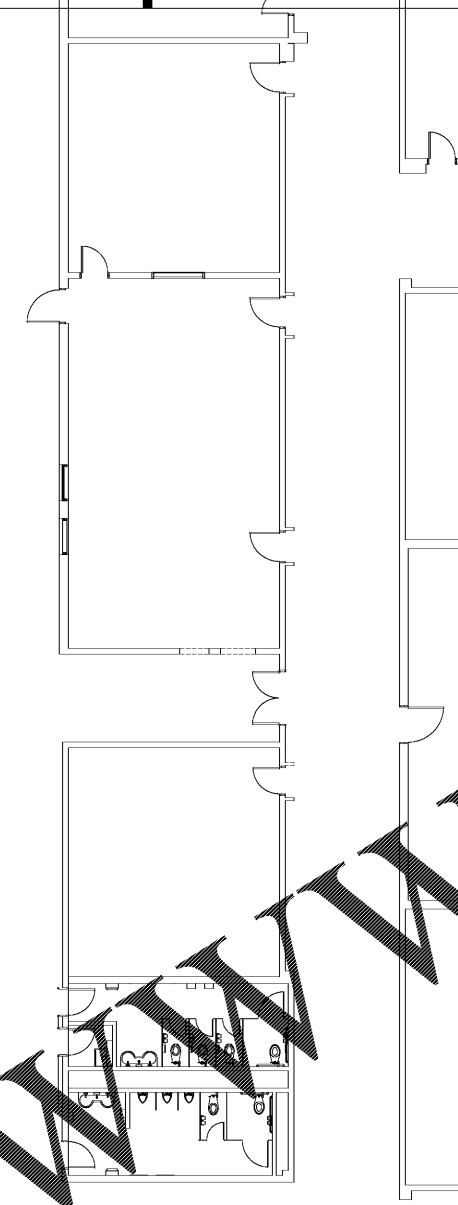


1 2 3 4 5 6

E  
D  
C  
B  
A

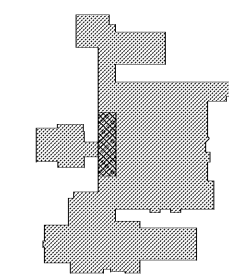
Order Plans @ WWW.LDILine.com



**GENERAL PLUMBING NOTES**

NOT ALL EXISTING WORK IS SHOWN AND THAT SHOWN IS IN ITS APPROXIMATE LOCATION AND ARRANGEMENT. CONTRACTOR SHALL BE RESPONSIBLE FOR VERIFYING LOCATIONS, ARRANGEMENTS, SIZES AND CONDITIONS AND IN CASE OF DISCREPANCY TO CONTACT THE ARCHITECT FOR RELOCATION AND REMOVAL OF SAID ELEMENTS IN ACCORDANCE WITH THE BASIC INTENTIONS INDICATED BY THE DRAWINGS AND DETAILS.

- DEMOLITION NOTES:** (THIS SHEET ONLY)
- ▽ REMOVE EXISTING WASTE, WATER, NATURAL GAS & COMPRESSED AIR PIPING ASSOCIATED WITH SCIENCE CASEWORK. CAP PIPING BELOW SLAB AND IN WALL.
  - ▽ REMOVE EXISTING EMERGENCY SHOWER, DRAIN AND ASSOCIATED PING. CAP ASSOCIATED PIPING IN WALL AND IN FLOOR.
  - ▽ REMOVE GAS SOLENOID VALVE IN VALVE WALL BOX. PURGE AND CAP GAS PIPING.
  - ▽ REMOVE GAS COCK AND ASSOCIATED PIPING. CAP PIPING.



KEYPLAN

**PLUMBING DEMOLITION PLAN**  
 SCALE: 1/8" = 1'-0"

**dickinson**  
ARCHITECTS

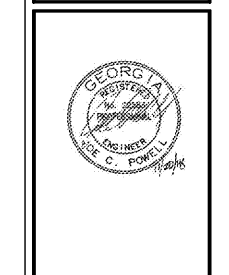
Architecture Interior Design Planning  
 771 Broad Street, Suite 200  
 Atlanta, Georgia 30308  
 404.522.7488  
 www.dickinsonarchitects.com

Member of the  
 American Institute of  
 Architects

THIS DRAWING IS THE PROPERTY OF DICKINSON ARCHITECTS, P.C. AND IS NOT TO BE REPRODUCED OR COPIED IN WHOLE OR IN PART WITHOUT THE WRITTEN PERMISSION OF DICKINSON ARCHITECTS, P.C. ANY OTHER REPRODUCTION OF THIS DRAWING WITHOUT THE WRITTEN PERMISSION OF DICKINSON ARCHITECTS, P.C. WILL BE CONSIDERED A VIOLATION OF THE PROFESSIONAL ETHICS OF THE ARCHITECTURAL PROFESSION.

PROJECT TITLE:  
**MURPHEY  
 MIDDLE  
 SCHOOL P.E.  
 BUILDING  
 PROJECT #  
 B-17-005-3756.1**

REVISIONS			
REV #	DATE	APPROV BY	REVISION
1	11/02/18	JMF	STATE FINAL
2	11/20/18	JMF	ISSUE FOR BID



DA PROJECT NUMBER & NAME:  
 PROJECT NUMBER  
 DRAWING TITLE:  
**PLUMBING DEMO  
 PLAN - JOSEY H.S.  
 BUSINESS &  
 MARKETING**

DRAWING NO:  
**P105**