

**-- AIR DISTRIBUTION SCHEDULE --**

MARK	TYPE	NECK CONNECTION (1)	FINISH	OBD	PRICE NO. UNLESS NOTED	REMARKS (2)
A	CEILING DIFFUSER	6"Ø	MANUFACTURER'S STANDARD FINISH	YES	SCD-4C	24 X 24 PANEL (3)
B	CEILING DIFFUSER	8"Ø	MANUFACTURER'S STANDARD FINISH	YES	SCD-4C	24 X 24 PANEL (3)
C	CEILING DIFFUSER	6"Ø	MANUFACTURER'S STANDARD FINISH	YES	SCD	12 X 12 PANEL (3)
D	CEILING RETURN/EXHAUST	10" X 10"	MANUFACTURER'S STANDARD FINISH	NO	80	12 X 12 PANEL WITH BORDER FRAME
E	CEILING RETURN/EXHAUST	22" X 22"	MANUFACTURER'S STANDARD FINISH	NO	80	24 X 24 PANEL WITH BORDER FRAME
F	HEAVY DUTY RETURN/EXHAUST	SEE PLANS	MANUFACTURER'S STANDARD FINISH	NO	91	45° DEFLECTION 3/8" BLADE SPACING

- DUCT RUNOUT SIZE SAME AS NECK CONNECTION SIZE, UNLESS NOTED OTHERWISE.
- PROVIDE LAY-IN TYPE FOR T-BAR CEILINGS AND SURFACE TYPE FOR ALL OTHER CEILINGS. REFER TO ARCHITECTURAL FINISH SCHEDULE FOR CEILING TYPES.
- PROVIDE WITH REMOVABLE CORE (RC) AND MOLDED, INSULATED BACKPAN WITH FOIL SKRIM VAPOR BARRIER.
- BAKED ENAMEL FINISH, CUSTOM COLOR. COLOR AS SELECTED BY ARCHITECT.
- CONCEALED OPERATOR AND LINKAGE. SIZE INDICATED DOES NOT INCLUDE OPERATOR COMPARTMENT.

**-- FAN SCHEDULE --**

ITEM	LOCATION	C.F.M.	S.P.	HP.	R.P.M.	MAX R.P.M.	MAX SONES	GREENNECK MODEL NO.	REMARKS
F-1	ROOF	235	0.5	1/20	1550	-	7.6	G-080-D	(1)(2)
F-2	ROOF	235	0.5	1/20	1550	-	7.6	G-080-D	(1)(2)

- COMPLETE WITH BACKDRAFT DAMPER, ROOF CURB, BIRDSCREEN AND DISCONNECT MEANS.
- SWITCH WITH ROOM LIGHTS. FURNISH CONTACTORS AS REQUIRED.

**-- ELECTRIC HEATER SCHEDULE --**

ITEM	LOCATION	WATTS	Q-MARK MODEL NO.
CH-1	SEE PLANS	2,000	AWH SERIES (1)
CH-2	SEE PLANS	2,000	AWH SERIES (1)
WH-1	SEE PLANS	2,000	AWH SERIES (2)
WH-2	SEE PLANS	2,000	AWH SERIES (2)

- COMPLETE WITH RECESSED CEILING TRIM KIT AND UNIT MOUNTED THERMOSTAT.
- COMPLETE WITH RECESSED TRIM KIT AND UNIT MOUNTED THERMOSTAT.

**-- PACKAGED UNIT SCHEDULE --**

ITEM	C.F.M.	EXT. S.P.	HP.	TYPE	OUTDOOR AIR CFM	SENSIBLE M.B.H.	TOTAL M.B.H.	REFRIG. TYPE	ELECTRIC HEATER KW	TRANE MODEL NO.	REMARKS
RTU-1	7,500	1.0	-	--	1,100	189.7	267.8	--	36.0	WSD-240	(1)(2)
RTU-2	7,500	1.0	-	--	1,100	189.7	267.8	--	36.0	WSD-240	(1)(2)

- RATINGS IN ACCORDANCE WITH A.R.I. STANDARD 240.
- FURNISH SLOW START ON SUPPLY FAN AND ION GENERATOR SIZED FOR FULL UNIT AIRFLOW.

**INDOOR HEAT PUMP SCHEDULE --**

ITEM	COOLING CAP. BTUH (1)	EXT. S.P. (IN.) W.G.	O.A. CFM	FAN HP	MODE	COOLING CAP. BTUH (1)		AUX. HEAT		MODEL NO.	REMARKS
						SENSIBLE	TOTAL	K.W.	STGS.		
IHP-1	24,000	--	--	1.0 A	DIRECT	--	24,000	--	--	mitsubishi PLA-A24	--
IHP-2	810	--	--	1.0 A	DIRECT	--	24,000	--	--	mitsubishi PLA-A24	--
IHP-3	215	--	--	1.0 A	DIRECT	--	12,000	--	--	mitsubishi MSZ-GE12NA	--
IHP-4	215	--	--	1.0 A	DIRECT	--	12,000	--	--	mitsubishi MSZ-GE12NA	--
IHP-5	350	--	--	1.0 A	DIRECT	--	18,000	--	--	mitsubishi PKA-A31B1A	--
IHP-6	215	--	--	1.0 A	DIRECT	--	12,000	--	--	mitsubishi MSZ-GE12NA	--
IHP-7	215	--	--	1.0 A	DIRECT	--	12,000	--	--	mitsubishi MSZ-GE12NA	--
IHP-8	215	--	--	1.0 A	DIRECT	--	12,000	--	--	mitsubishi MSZ-GE12NA	--
IHP-9	215	--	--	1.0 A	DIRECT	--	12,000	--	--	mitsubishi MSZ-GE12NA	--

(1) RATINGS IN ACCORDANCE WITH A.R.I. STANDARD 240.

**-- OUTDOOR HEAT PUMP SCHEDULE --**

ITEM	COOLING CAP. BTUH (1)	E.E.R. MIN.	HEATING CAP. M.B.H. (1)		C.O.P. (1)		MODEL NO.
			HI	LO	HI	LO	
OHP-1	24,000	24.2 SEER	29.0	17.4	4.35	2.72	mitsubishi PUZ-A24
OHP-2	24,000	24.2 SEER	29.0	17.4	4.35	2.72	mitsubishi PUZ-A24
OHP-3	12,000	20.5 SEER	14.4	8.8	10 HSPF	--	mitsubishi MUZ-GE12NA
OHP-4	12,000	20.5 SEER	14.4	8.8	10 HSPF	--	mitsubishi MUZ-GE12NA
OHP-5	18,000	15.3 SEER	19.0	13.0	9.5 HSPF	--	mitsubishi PUZ-A31B1A
OHP-6	12,000	20.5 SEER	14.4	8.8	10 HSPF	--	mitsubishi MUZ-GE12NA
OHP-7	12,000	20.5 SEER	14.4	8.8	10 HSPF	--	mitsubishi MUZ-GE12NA
OHP-8	12,000	20.5 SEER	14.4	8.8	10 HSPF	--	mitsubishi MUZ-GE12NA
OHP-9	12,000	20.5 SEER	14.4	8.8	10 HSPF	--	mitsubishi MUZ-GE12NA

(1) RATINGS IN ACCORDANCE WITH A.R.I. STANDARD 240.

**-- REFRIGERATION PIPE SCHEDULE --**

ITEM	SUCTION LINE O.D.	LIQUID LINE O.D.	REMARKS
IHP-1/OHP-1	3/8"	5/8"	(1)
IHP-2/OHP-2	3/8"	5/8"	(1)
IHP-3/OHP-3	3/8"	1/4"	(1)
IHP-4/OHP-4	3/8"	1/4"	(1)
IHP-5/OHP-5	1/2"	1/4"	(1)
IHP-6/OHP-6	3/8"	1/4"	(1)
IHP-7/OHP-7	3/8"	1/4"	(1)
IHP-8/OHP-8	3/8"	1/4"	(1)
IHP-9/OHP-9	3/8"	1/4"	(1)

(1) REFRIGERANT PIPE SIZES INDICATED ARE FOR ESTIMATING PURPOSES ONLY. EXACT SIZES AND ACCESSORIES REQUIRED SHALL BE DETERMINED BY EQUIPMENT MANUFACTURER FROM FIELD OBTAINED DIMENSIONS.

**H.V.A.C. LEGEND**

SYMBOL	DESCRIPTION
— SL —	REFRIGERANT SUCTION / LIQUID
— D —	CONDENSATE DRAIN
⊖	THERMOSTAT 4" 6" A.F.
FD	FIRE DAMPER
CRD	CEILING RADIATION DAMPER
SD	SMOKE DAMPER
OBD	OPPOSED BLADE DAMPER
⊕ or C.F.M.	CUBIC FEET PER MINUTE
1	DETAIL NO. 8/M-1
M-1	SHEET NO.
⊗	SUPPLY DIFFUSER
⊗	RETURN/EXHAUST GRILLE
⊕ of MVD	MANUAL VOLUME DAMPER
⊕	DUCT (SIZE SHOWN IS METAL SIZE)
⊕	SQUARE ELL WITH SINGLE THICK TURNING VANES
⊕	FABRIC DUCT WITH MESH DIFFUSERS
⊕	AIR DEVICE NECK CONNECTION SIZE
∅	DIAMETER
TYP.	TYPICAL

**HVAC NOTES:**

NOT ALL EXISTING WORK IS SHOWN, AND THAT SHOWN IS IN ITS APPROXIMATE LOCATION AND ARRANGEMENT. EXACT LOCATION, ARRANGEMENT AND SIZES SHALL BE VERIFIED ON THE JOB BEFORE STARTING ANY NEW WORK.

INSTALL PIPING AND DUCTWORK IN EQUIPMENT ROOMS ADJACENT TO WALLS AND CEILING, WHERE POSSIBLE, TO PROVIDE MAXIMUM ROOM CLEARANCE.

COORDINATE THE INSTALLATION OF THIS WORK WITH THAT OF OTHER TRADES TO PROVIDE THE BEST ARRANGEMENT OF PIPING, DUCTWORK, AND EQUIPMENT. REFER TO PLUMBING AND ELECTRICAL DRAWINGS.

PIPING, DUCTWORK, AND EQUIPMENT IS SHOWN IN ITS GENERAL LOCATION, UNLESS DIMENSIONED. EXACT LOCATION SHALL BE DETERMINED BY THE LOCATION OF OTHER EQUIPMENT, AND TO PROVIDE SERVICE CLEARANCE.

ARRANGE PIPING AND DUCTWORK TO CLEAR STRUCTURAL MEMBERS, PLUMBING, PIPING AND LIGHT FIXTURES.

EXACT LOCATION OF GRILLES AND CEILING OUTLETS SHALL BE DETERMINED ON THE JOB. COORDINATE WITH LIGHTS AND ARCHITECTURAL REQUIREMENTS TO PROVIDE A UNIFORM AND SYMMETRICAL APPEARANCE. REFER TO ARCHITECTURAL AND ELECTRICAL DRAWINGS AND DETAILS.

ALL PIPING SHALL BE CONCEALED, UNLESS NOTED OTHERWISE.

PROVIDE FLEXIBLE DUCT CONNECTIONS TO ALL AIR HANDLING EQUIPMENT.

PROVIDE UNION OR FLANGE CONNECTIONS IN PIPING AT ALL EQUIPMENT AND CONTROL VALVES, AND AS REQUIRED FOR SERVICE.

PROVIDE ACCESS DOORS IN DUCTWORK FOR ALL FIRE AND SMOKE DAMPERS, AND DUCT-MOUNTED COILS AND CONTROL DEVICES.

SLOPE DRAIN LINES TOWARD DRAIN WITH A MINIMUM SLOPE OF 1/4" PER FOOT.



**dickinson**  
ARCHITECTS  
Architecture/Interior/Planning  
771 Broad Street Suite 300  
Atlanta, Georgia 30308  
(770) 538-7488  
www.dickinsonarchitects.com  
www.dickinsonarchitects.com

Member of the  
American Institute of  
Architects

THIS DRAWING IS THE PROPERTY OF DICKINSON ARCHITECTS AND IS NOT TO BE REPRODUCED OR COPIED IN ANY MANNER WITHOUT THE WRITTEN PERMISSION OF DICKINSON ARCHITECTS. THE USER OF THIS DRAWING AGREES TO HOLD DICKINSON ARCHITECTS, P.C., HARMLESS FROM AND AGAINST ALL LIABILITY FOR ANY AND ALL DAMAGES, INCLUDING REASONABLE ATTORNEY'S FEES, THAT MAY BE INCURRED BY DICKINSON ARCHITECTS, P.C.

PROJECT TITLE:  
**MURPHEY  
MIDDLE  
SCHOOL P.E.  
BUILDING  
PROJECT #  
B-17-005-3756.1**

REV	DATE	BY	REVISION
11/2/18	JMF	STATE FINAL	
11/20/18	JMF	ISSUE FOR BID	

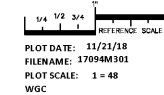


DA PROJECT NUMBER & NAME:  
1707.1

DRAWING TITLE:  
**HVAC  
SCHEDULES,  
NOTES AND  
LEGEND**

DRAWING NO:

**M301**



CONTRACT NO. 17094M301  
PRIORITY, DESIGN & ARCHITECTS, INC.  
MEMPHIS, GA 30144 (978) 742-2899