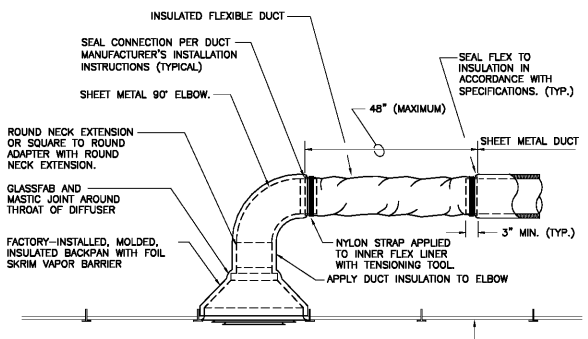
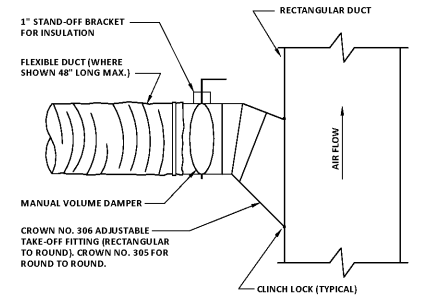


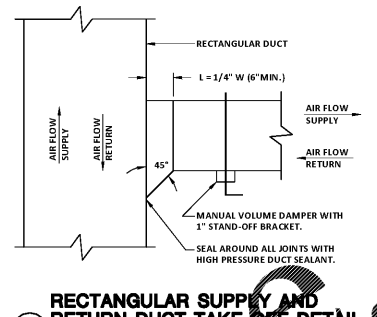
**1 EXHAUST/RETURN GRILLE CONNECTION DETAILS**  
NOT TO SCALE



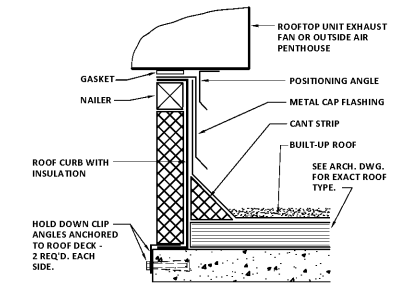
**2 FLEXIBLE ROUND DUCT CONNECTION DETAIL**  
NOT TO SCALE



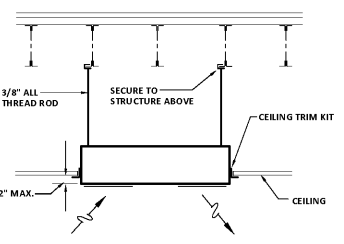
**3 SUPPLY DUCT TAKE-OFF FITTING DETAIL**  
NOT TO SCALE



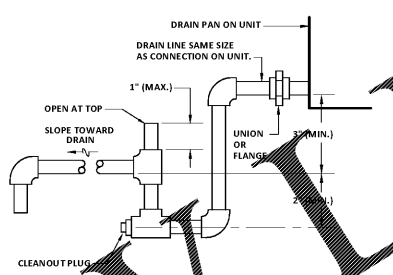
**4 RECTANGULAR SUPPLY AND RETURN DUCT TAKE-OFF DETAIL**  
NOT TO SCALE



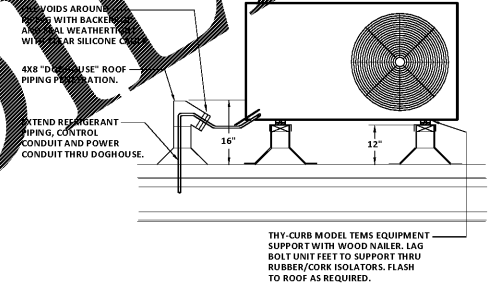
**5 ROOF CURB DETAIL**  
NOT TO SCALE



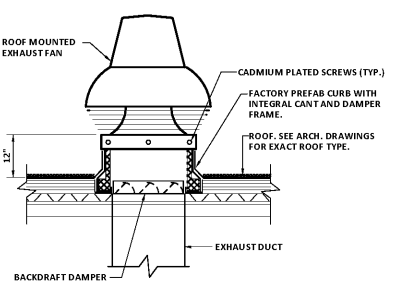
**6 CABINET HEATER DETAIL**  
NOT TO SCALE



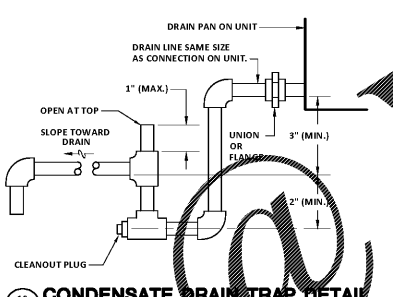
**7 CONDENSATE DRAIN TRAP DETAIL**  
NOT TO SCALE



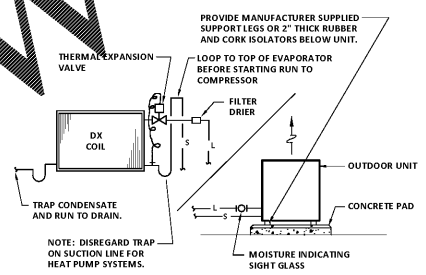
**8 SECTION OF OUTDOOR UNIT ON ROOF**  
NOT TO SCALE



**9 ROOF MOUNTED EXHAUST FAN DETAIL**  
NOT TO SCALE



**10 CONDENSATE DRAIN TRAP DETAIL**  
NOT TO SCALE



**11 REFRIGERANT PIPING DIAGRAM**  
NOT TO SCALE

**dickinson ARCHITECTS**  
Architecture/Interior Design/Planning  
771 Broad Street Suite 300A  
Atlanta, Georgia 30308  
(770) 525-7488  
www.dickinsonarchitects.com

Member of the American Institute of Architects

PROJECT TITLE:  
**MURPHEY MIDDLE SCHOOL P.E. BUILDING**  
PROJECT #  
**B-17-005-3756.1**

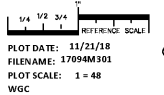
REV	DATE	BY	REVISION
11/2/18	JMF	STATE FINAL	
11/20/18	JMF	ISSUE FOR BID	



DA PROJECT NUMBER & NAME:  
1707.1

DRAWING TITLE:  
**HVAC DETAILS**

DRAWING NO:  
**M201**



Order Plans