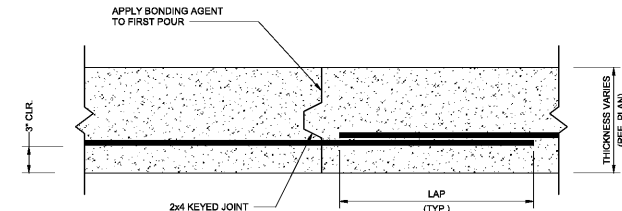


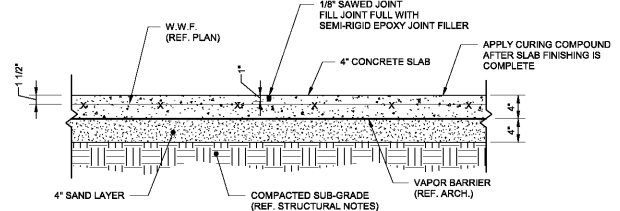
NOTE: REF. FOOTING SCHEDULE ON FOUNDATION PLAN FOR SIZE AND SPACING OF CONTINUOUS REINFORCING.

1 REINF. @ CONTINUOUS FOOTING INTERSECTIONS
SCALE: 1" = 1'-0"



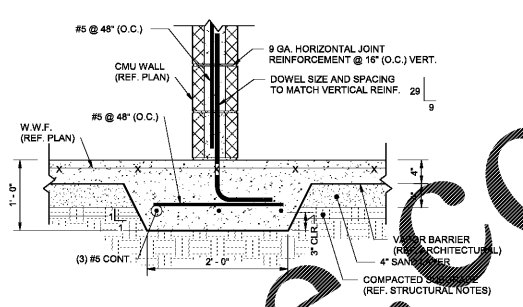
NOTE: REF. FOOTING SCHEDULE ON FOUNDATION PLAN FOR SIZE AND SPACING OF CONTINUOUS REINFORCING.

2 CONST. JOINT FOR CONT. FOOTING
SCALE: 1 1/2" = 1'-0"

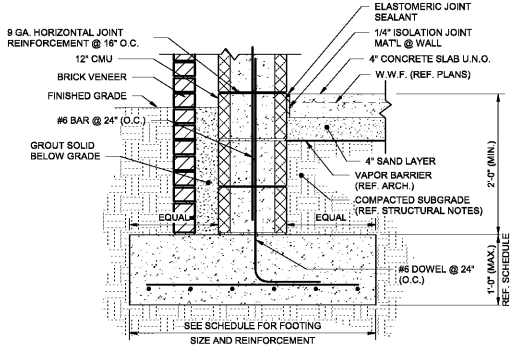


NOTE: SAW JOINT WITHIN 8 HOURS AFTER POURING CONCRETE SLAB.

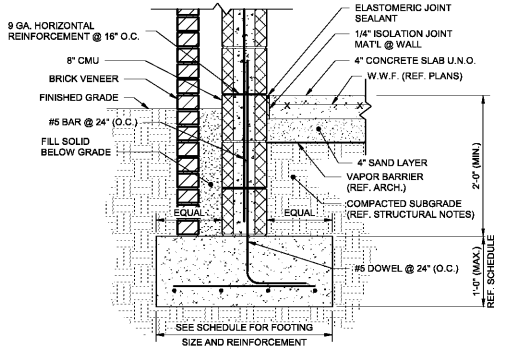
3 4" SLAB CONTROL JOINT
SCALE: 1" = 1'-0"



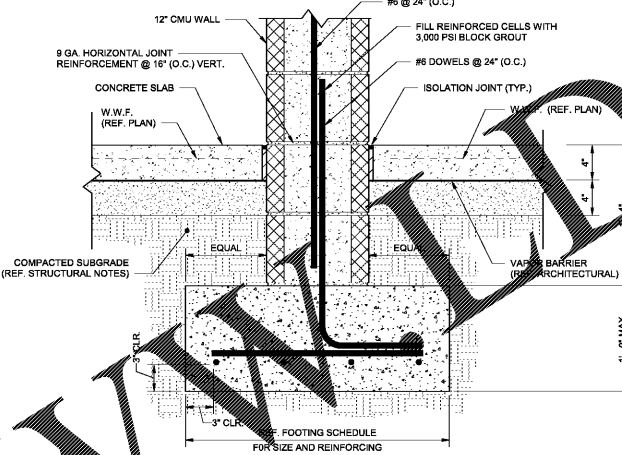
THICKENED SLAB @ WALL
SCALE: 1" = 1'-0"



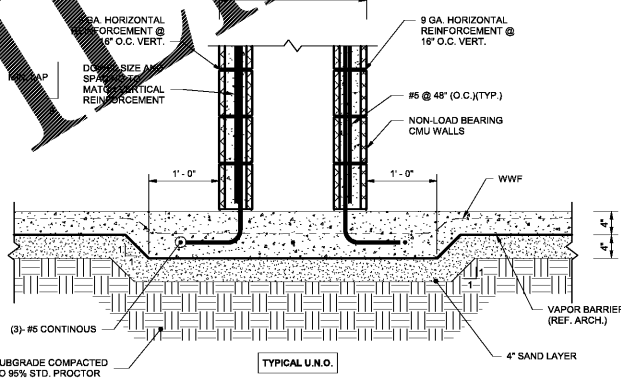
5 CONTINUOUS FOOTING W/ 12" CMU WALL
SCALE: 1" = 1'-0"



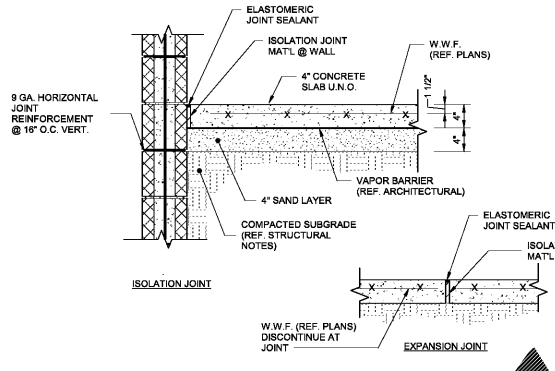
6 CONTINUOUS FOOTING W/ 8" CMU WALL
SCALE: 1" = 1'-0"



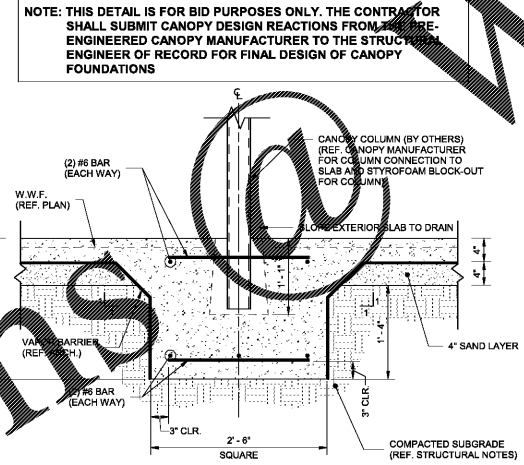
CONT. FOOTING AT INTERIOR WALL 12" CMU
SCALE: 1 1/2" = 1'-0"



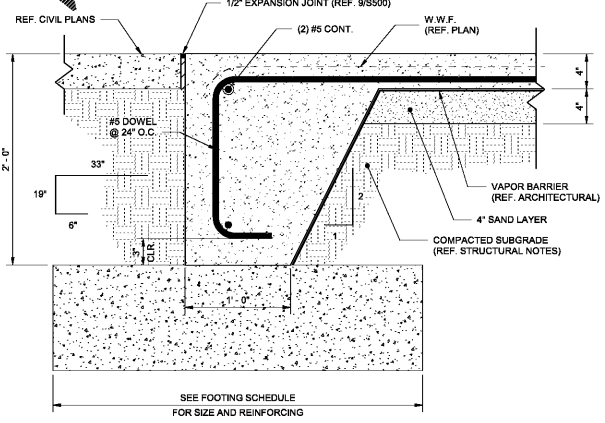
8 THICKENED SLAB @ CHASE WALL
SCALE: 1" = 1'-0"



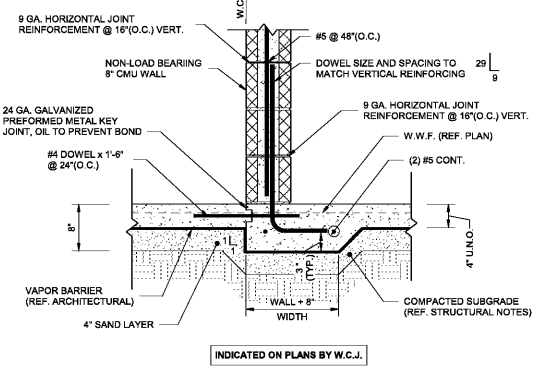
9 ISOLATION AND EXPANSION JOINT DETAIL
SCALE: 1" = 1'-0"



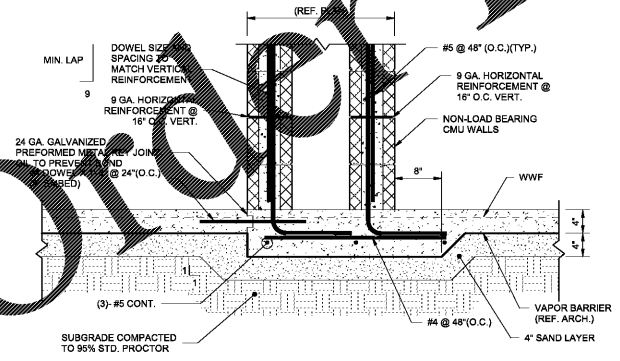
10 CANOPY FOOTING
SCALE: 1" = 1'-0"



11 TURNDOWN SLAB @ FOOTING / DOOR
SCALE: 1 1/2" = 1'-0"



12 WALL CONTROL JOINT
SCALE: 1" = 1'-0"



13 WALL CONTROL JOINT @ CHASE WALL
SCALE: 1" = 1'-0"

dickinson
ARCHITECTS
Architecture/Interior Design/Planning
771 Broad Street, Suite 500
Augusta, Georgia 31401
772-7488
m@dickinsonarchitects.com
www.dickinsonarchitects.com

Member of the
American Institute of
Architects

THIS DRAWING IS THE PROPERTY OF DICKINSON ARCHITECTS, P.C. AND IS NOT TO BE REPRODUCED OR COPIED IN WHOLE OR IN PART OR USED FOR ANY OTHER PROJECT WITHOUT THE WRITTEN CONSENT OF DICKINSON ARCHITECTS, P.C. AND IS TO BE DESTROYED UPON COMPLETION OF THE PROJECT.

PROJECT TITLE:
**MURPHEY
MIDDLE
SCHOOL P.E.
BUILDING
PROJECT #
B-17-005-3756.1**

REV	DATE	APPROV	BY	REVISION
1	11/02/18			STATE FINAL
2	11/20/18			ISSUE FOR BID



DA PROJECT NUMBER & NAME:
1707.1

DRAWING TITLE:
**FOUNDATION
DETAILS**

DRAWING NO:
S500

CRANSTON
ENGINEERING
ENGINEERS - PLANNERS - SURVEYORS
452 Ellis Street, Augusta, Georgia 30901
Telephone 706-722-1588
CranstonEngineering.com

Order Plans @ www.dickinson.com