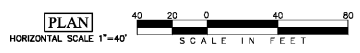
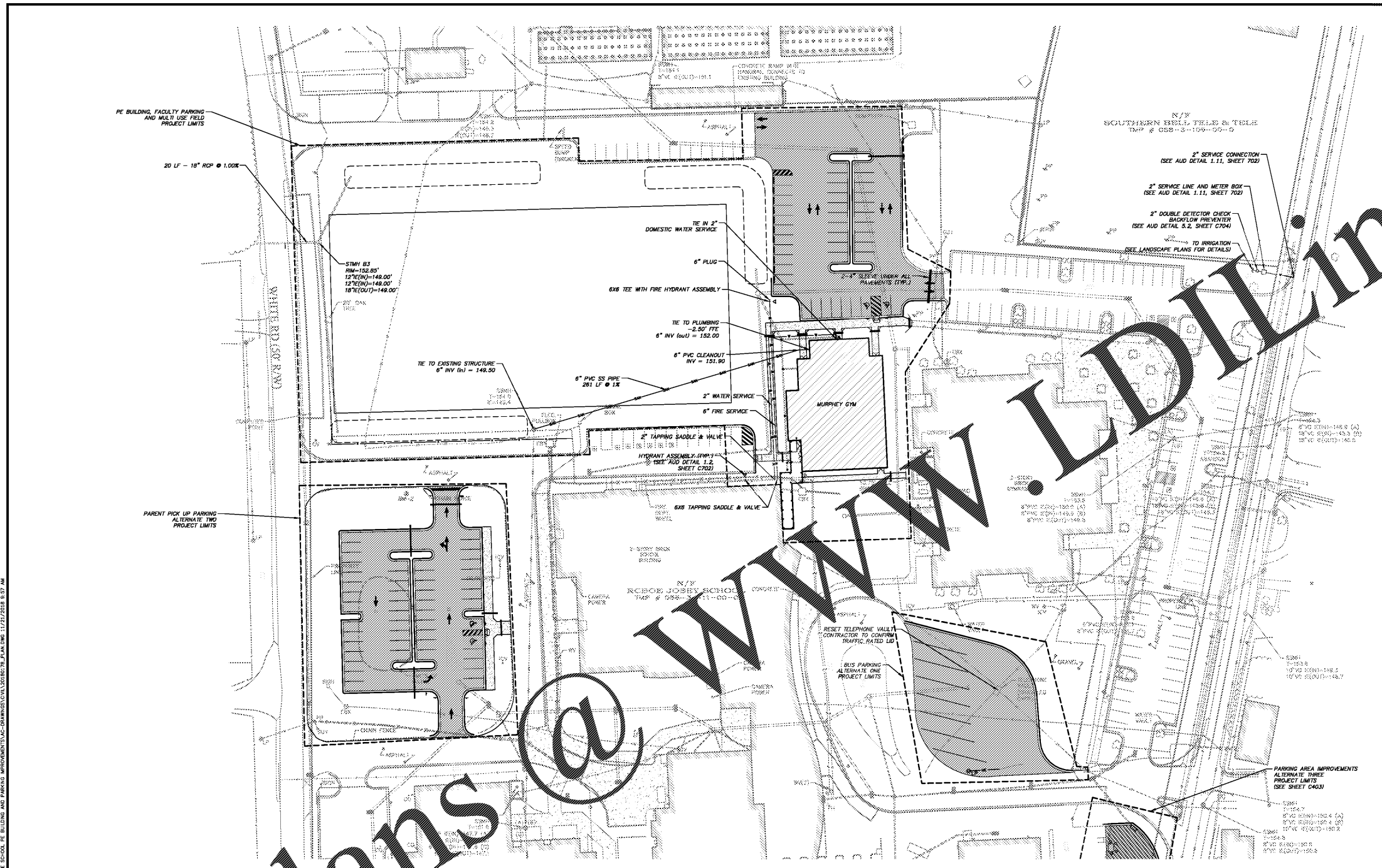


Order Plans @ WWW.LDILLIN.COM



- GENERAL NOTES:**
- NO WORK SHALL COMMENCE WITHIN THE CITY OF AUGUSTA, GEORGIA'S RIGHT-OF-WAY UNTIL AN ENCROACHMENT PERMIT HAS BEEN SECURED BY THE CONTRACTOR.
 - CONTRACTOR SHALL INSTALL TEMPORARY CONSTRUCTION FENCING AROUND THE SITE PERIMETER AS NECESSARY FOR SECURITY AND PUBLIC SAFETY.
 - HANDICAP ACCESSIBLE PARKING SPACES AND ACCESSIBLES SHALL BE LEVEL WITH SURFACE SLOPES NOT EXCEEDING 1:48 (2%) CROSS SLOPE AND 1:20 (5%) RUNNING SLOPE, IN COMPLIANCE WITH ADA STANDARDS, LATEST EDITION.
 - CURB DIMENSIONS ARE TO THE BACK OF CURB UNLESS NOTED OTHERWISE.
 - SIDEWALK DIMENSIONS ARE TO THE EDGE OF SIDEWALK.
 - SIDEWALK CONTROL JOINTS SHALL BE SPACED EQUAL TO THE WIDTH OF SIDEWALK.
 - SIDEWALK EXPANSION JOINTS SHALL BE SPACED 30' FEET MAX AND AT ALL ROAD EDGES.
 - CURB CONTROL JOINTS SHALL BE SPACED 20' MAX.
 - ALL SIGNS SHALL BE INSTALLED A MINIMUM OF 3' FROM EDGE OF SIGN TO EDGE OF PAVEMENTS AND SIDEWALKS.
 - PAVEMENT MARKINGS AND ARROWS SHALL BE IN ACCORDANCE WITH GDOT STANDARD DETAILS AND SPECIFICATIONS, LATEST EDITION.
 - REFER TO SHEET C700 AND C701 FOR SITE CIVIL DETAILS.
 - REFER TO LANDSCAPING DRAWINGS FOR LANDSCAPING PLANS AND DETAILS.
 - REFER TO ARCHITECTURAL DRAWINGS FOR ALL ABOVE GROUND BUILDINGS AND STRUCTURES PLANS AND DETAILS.
 - CONTRACTOR TO CONFIRM SANITARY SEWER CONNECTION BEFORE TAPPING.
 - REFER TO MUTCD FOR ALL TRAFFIC SIGNS.
 - ALL SPOT SHOTS SHOWN HEREIN ARE BOTTOM OF CURB UNLESS OTHERWISE NOTED.



BRANSTON
ENGINEERING
ENGINEERS - PLANNERS - SURVEYORS
450 Ellis Street, Augusta, Georgia 30901
P.O. Box 2000, Augusta, Georgia 30903
Phone: 706.722.1538
mailto:branston@branston-engineering.com



Murphey Middle School PE Building
Utility Plan
DRAWN BY: MAB/RDS
CHECKED BY: TMP
APPROVED BY: MBM
DATE: NOVEMBER 2, 2018
SCALE: 1" = 40'
JOB No. 2018-0178
DRAWING No. C402



THIS DRAWING IS THE PROPERTY OF DICKINSON ARCHITECTS. IT IS NOT TO BE REPRODUCED OR COPIED IN WHOLE OR IN PART OR USED FOR ANY OTHER PURPOSE WITHOUT THE WRITTEN CONSENT OF DICKINSON ARCHITECTS. THE USER OF THIS DRAWING AGREES TO HOLD DICKINSON ARCHITECTS, P.C. AND ITS OFFICERS AND EMPLOYEES HARMLESS FROM AND AGAINST ALL LIABILITY, INCLUDING REASONABLE ATTORNEY'S FEES, IN CONNECTION WITH THE USE OF THIS DRAWING.

PROJECT TITLE:
MURPHEY MIDDLE SCHOOL PE BUILDING PROJECT # B-17-005-3756.1

REVISIONS			
REV #	DATE	APPRD BY	REVISION
11/02/18	MBM	STATE FINAL	
11/20/18	MBM	ISSUE FOR BID	

DA PROJECT NUMBER & NAME:
1707.1
DRAWING TITLE:
UTILITY PLAN

DRAWING NO:
C402