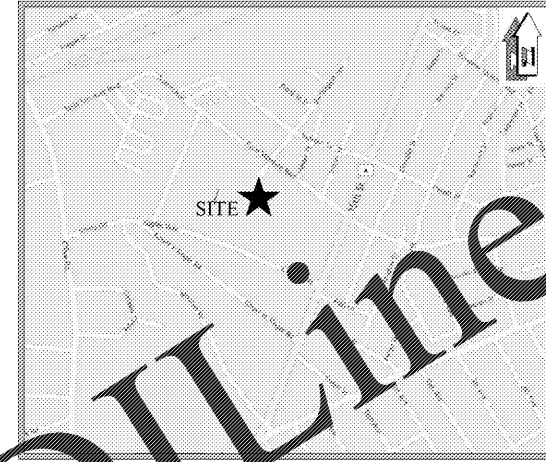


VICINITY MAP
N.T.S.

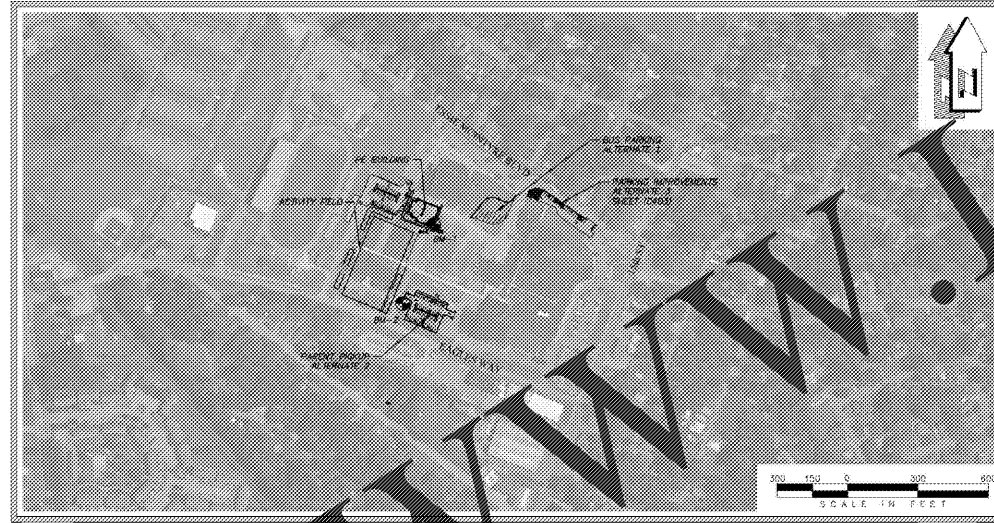
CONSTRUCTION PLANS FOR
Murphey Middle School PE Building

PREPARED FOR
RICHMOND COUNTY SCHOOL SYSTEM

864 BROAD STREET
AUGUSTA, GEORGIA 30901



LOCATION MAP
N.T.S.



- PROJECT DATA:**
1. ACREAGE OF PROPERTY: 31.50 ACRES
 2. ACREAGE OF DEVELOPMENT: 6.05 ACRES
 3. SITE ADDRESS: MURPHEY MIDDLE SCHOOL, 1701 FIFTEENTH STREET, AUGUSTA, GEORGIA 30904
 4. OWNER/DEVELOPER: RICHMOND COUNTY SCHOOL SYSTEM, 864 BROAD STREET, AUGUSTA, GEORGIA 30901, PHONE: (706) 826-1000
 - 24 HOUR CONTACT: NAME: BENTON STARKS, PHONE: (706) 737-7189
 5. TAX MAP & PARCEL NUMBERS: 058-3-111-00-0
 6. ZONING: B-1 (NEIGHBORHOOD BUSINESS), LI (LIGHT INDUSTRIAL)
 7. PROVIDED PARKING: 104
 - 7.1. STORM WATER OUTFALL: HANDICAP PARKING PROVIDED: 4; DETENTION POND ON EAGLE WAY AND UNNAMED TRIBUTARY: 12.4 ACRES
 8. DRAINAGE AREA THIS PROJECT: 12.4 ACRES
 9. IMPERVIOUS AREA: EXISTING: 6.4 ACRES; PROPOSED: 7.6 ACRES
 10. PERVIOUS AREA: EXISTING: 6.0 ACRES; PROPOSED: 4.8 ACRES
 11. RECEIVING STREAM: OATES CREEK TRIBUTARY NO. 1
 12. ULTIMATE STREAM: SAVANNAH RIVER
 13. EXISTING LAND USE: PUBLIC SCHOOL
 14. PROPOSED LAND USE: PUBLIC SCHOOL

Sheet Number	Sheet Title
C100	Cover
C200	Legend & Notes
C300	Existing Conditions & Demolition Plan
C400	Layout Plan
C401	Grading & Drainage Plan
C402	Utility Plan
C403	Alternate Parking Area
C500	Profiles
C600	Erosion Control Notes
C601	Erosion Control Notes
C602	Erosion Control Notes
C603	Initial Erosion Control Plan
C604	Intermediate Erosion Control Plan
C605	Final Erosion Control Plan
C606	Alternate Parking Lot Erosion Control Plan
C607	Erosion Control Details
C700	Miscellaneous Details
C701	Miscellaneous Details
C702	Utility Details
C703	Utility Details
C704	Utility Details
C705	ADS System Details
L1.1	Tree Plan
L1.2	Irrigation Plan

NAME	DESCRIPTION	PT #	NOR. COORD.	EASTING	ELEVATION
BM-1	100000	1257158.609	106360.7823	153.29	
BM-2	000001	1256822.200	106360.7823		

BENCHMARK DATA:
1. COORDINATE SYSTEM IS STATE PLANE NAD 1983.
2. ALL DISTANCES SHOWN ARE GROUND.

PREPARED BY

CRANSTON
ENGINEERING
ENGINEERS - PLANNERS - SURVEYORS
452 Ellis Street, Augusta, Georgia 30901
Post Office Box 2546, Augusta, Georgia 30903
Telephone 706-722-1598
mail@CranstonEngineering.com

NOVEMBER 2, 2018

FEATURE	FEATURE LOCATION	FEATURE TYPE	DESIGNED BY	MODEL NUMBER	FLOW CAPACITY
WQ-1	SHEET C605	WATER QUALITY INSERT	CONTECH	TR4848	2.66
WQ-2	SHEET C605	WATER QUALITY INSERT	CONTECH	TR4849	2.67
WQ-3	SHEET C605	WET SWALE	CRANSTON ENGINEERING	-	2.69
WQ-4	SHEET C605	WET SWALE	CRANSTON ENGINEERING	-	0.74
WQ-5	SHEET C605	WET SWALE	CRANSTON ENGINEERING	-	0.46
WQ-6	SHEET C605	UNDERGROUND DETENTION	ADS	SC-740	6.62



OSWOC LEVEL II
CERTIFICATION NO. 48296
EXPIRES 10/12/19

2018-0178
C100

dickinson
ARCHITECTS
Architecture | Interior Design | Planning
771 Broad Street, Suite 500
Augusta, Georgia 30901
772-7488
m@dickinsonarchitects.com
www.dickinsonarchitects.com

Member of the
American Institute of
Architects

PROJECT TITLE:
**MURPHEY
MIDDLE
SCHOOL PE
BUILDING
PROJECT #
B-17-005-3756.1**

REV #	DATE	APPRD BY	REVISION
1	11/20/18	MBM	STATE FINAL
2	11/20/18	MBM	ISSUE FOR BID

DA PROJECT NUMBER & NAME:
1707.1
DRAWING TITLE:
COVER

DRAWING NO:
C100

Order Plans

WWW.LDILine.com