

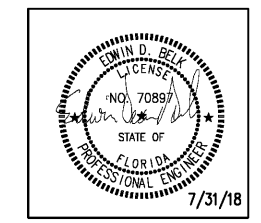
CIVIL:
Choctaw Engineering, Inc.
112 Truxton Avenue
Fort Walton Beach, FL 32547
Phone: (850) 862-6211
Fax: (850) 863-8059
Email: msiner@choctaweng.com

STRUCTURAL:
Wisniam Engineering Services, LLC
122 Nut Tree Court
Lexington, SC 29074
Phone: (803) 957-4008
Email: bill@weslex.com

MEP:
Allied Consulting Engineers
2905-D Queen City Drive
Charlotte, NC 28208
Phone: (704) 399-3943
Email: dbelk@allied-engineers.com

REVISIONS		
No.	Date	Description

Information contained on this drawing and in all digital files associated is authorized for use on the project named herein only and is the property of MISHRA ARCHITECTURE PLLC and may not be reproduced in any manner without express written or verbal permission from authorized individuals. Original drawing is 24"x36" and scales are as indicated. © 2008 MISHRA ARCHITECTURE PLLC



KEY PLAN

VTM Hotels, LLC

Home2Suites

2630 Wilde Lake Blvd.
Pensacola, FL 32526

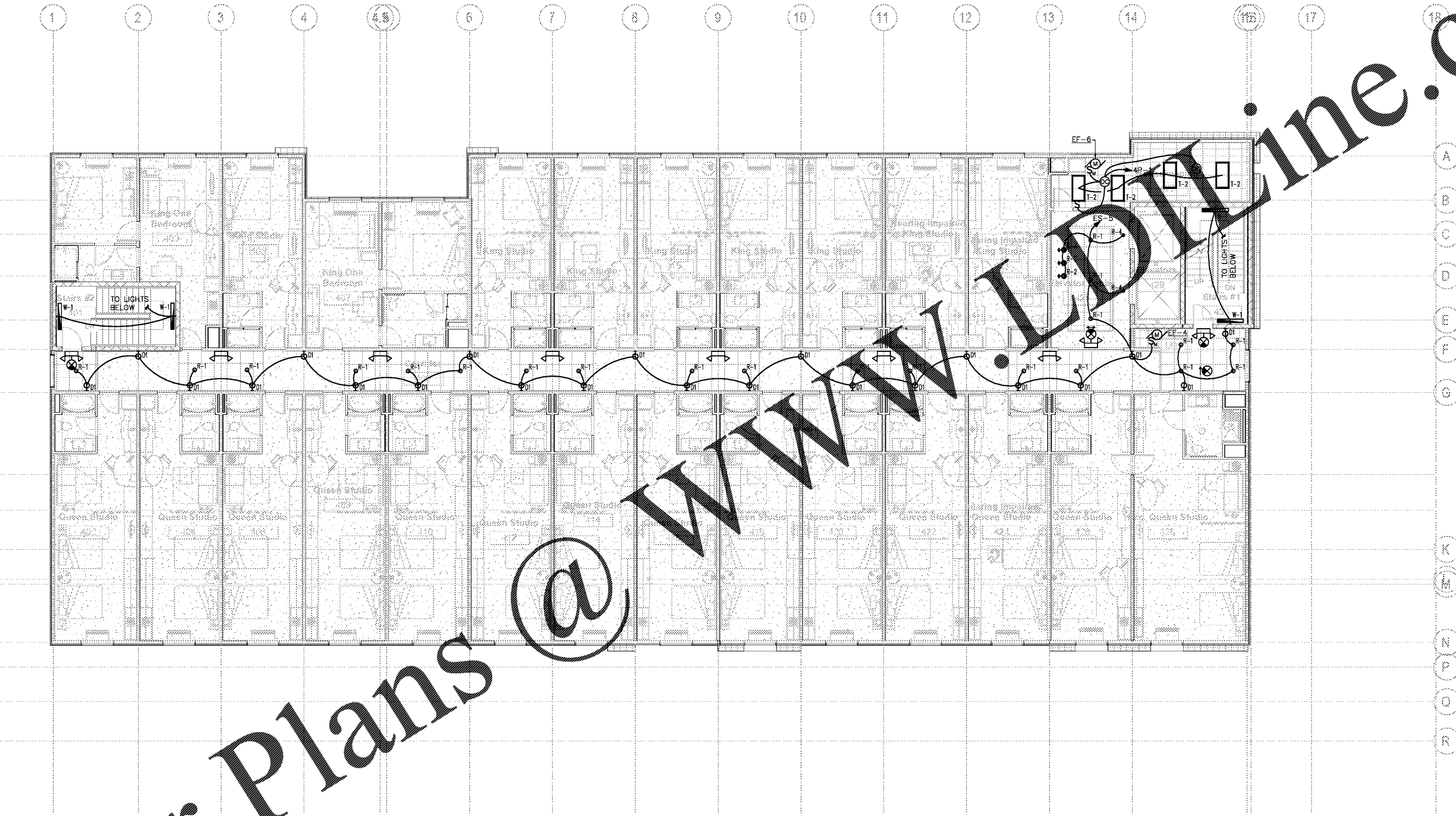
Drawing Title
Fourth Floor Lighting Plan

Phase
Construction Documents

Project No. 17-101
Prepared by MSM
Checked by EDB
Date July 31, 2018

Sheet No.
E104

Review



1 FOURTH FLOOR PLAN - LIGHTING
E104 SCALE: 1/8" = 1'-0"

- NOTES:
1. CONNECT EXIT/EMERGENCY LIGHTS TO NEAREST CIRCUIT AHEAD OF ALL CONTROLS.

Order Plans @

Home2Suites