

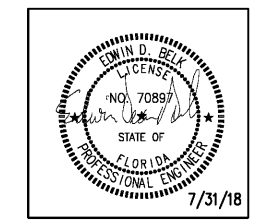
**CIVIL:**  
Choctaw Engineering, Inc.  
112 Truxton Avenue  
Fort Walton Beach, FL 32547  
Phone: (850) 862-6211  
Fax: (850) 863-8059  
Email: mainer@choctaweng.com

**STRUCTURAL:**  
Whisnart Engineering Services, LLC  
122 Nut Tree Court  
Lexington, SC 29074  
Phone: (803) 957-4008  
Email: bill@weslex.com

**MEP:**  
Allied Consulting Engineers  
2905-D Queen City Drive  
Charlotte, NC 28208  
Phone: (704) 399-3943  
Email: dbelk@allied-engineers.com

REVISIONS		
No.	Date	Description

Information contained on this drawing and in all digital files associated is authorized for use on the project named herein only and is the property of MISHRA ARCHITECTURE PLLC and may not be reproduced in any manner without express written or verbal permission from authorized individuals. Original drawing is 24"x36" and scales are as indicated © 2008 MISHRA ARCHITECTURE PLLC



**KEY PLAN**

VTM Hotels, LLC

Home2Suites

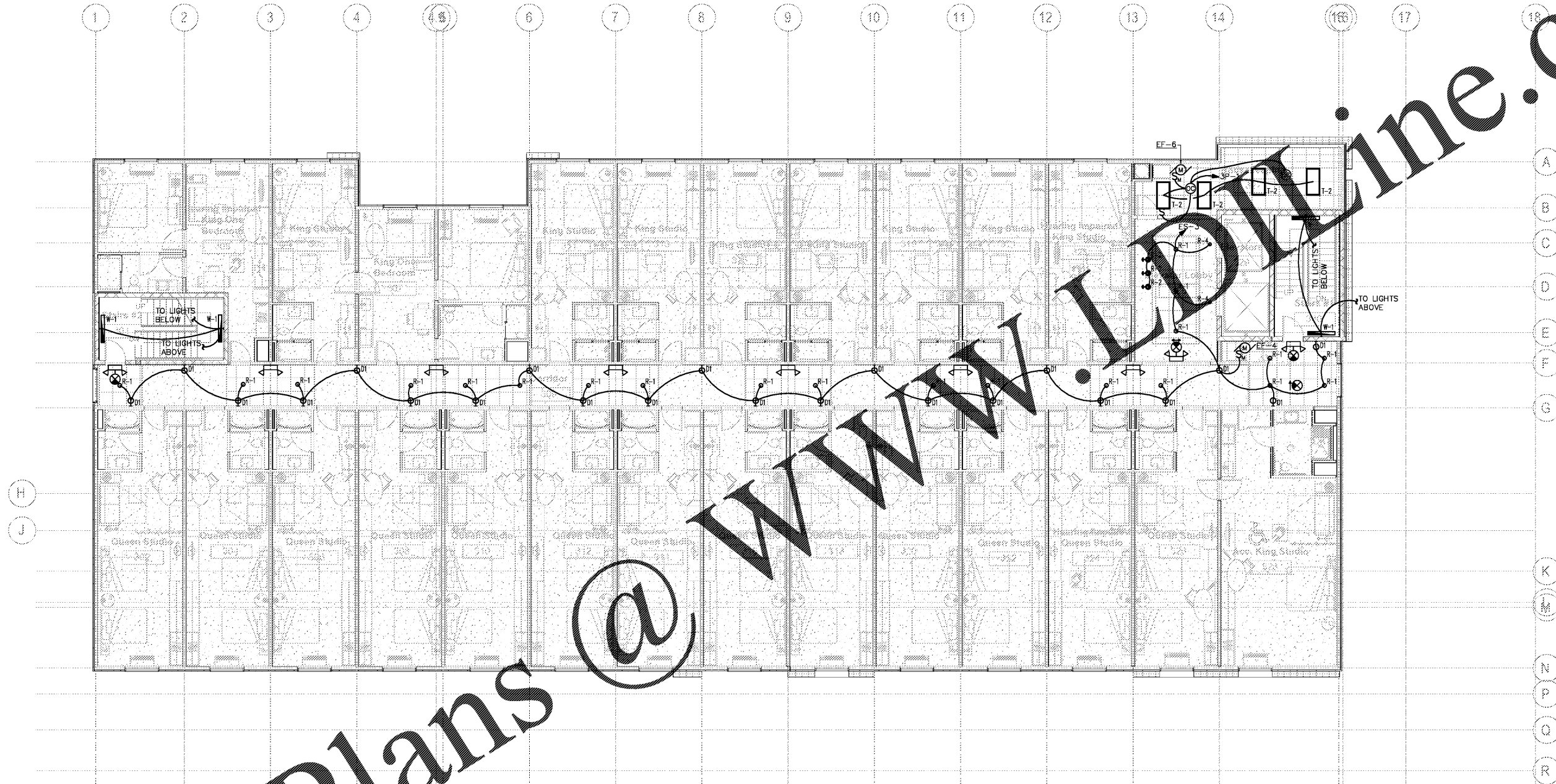
2630 Wilde Lake Blvd.  
Pensacola, FL 32526

Drawing Title  
Third Floor Lighting Plan

Phase  
Construction Documents

Project No.	17-101	Sheet No.	E103
Prepared by	MSM		
Checked by	EDB		
Date	July 31, 2018		

Review



**1 THIRD FLOOR PLAN - LIGHTING**  
E103 SCALE: 1/8" = 1'-0"

NOTES:  
1. CONNECT EXIT/EMERGENCY LIGHTS TO NEAREST CIRCUIT AHEAD OF ALL CONTROLS.

Order Plans @

WWW.LDLINE.COM

Home2Suites